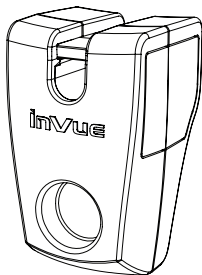
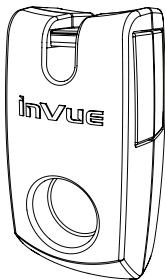


# invue

## IR StopLok



## Overview

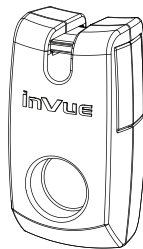
Important! Read entire instruction guide before starting installation.

## System Components

1. StopLok
2. IR2 Key

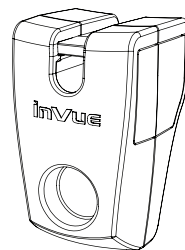
### System Overview:

The StopLok adds security to non-secure hooks and allows the retailers to select the number of “live” and “locked” merchandise items.



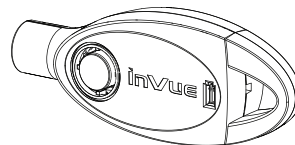
#### IR StopLok – 6 mm

NS6A – 5.0 mm  
NS6B – 5.5 mm  
NS6C – 6.0 mm



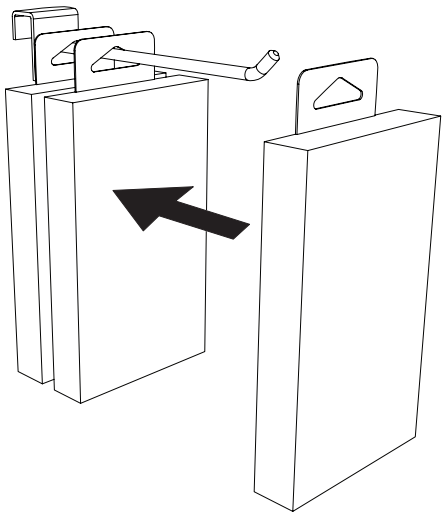
#### IR StopLok – 8 mm

NS8A – 6.4 mm  
NS8B – 7.0 mm  
NS8C – 8.1 mm

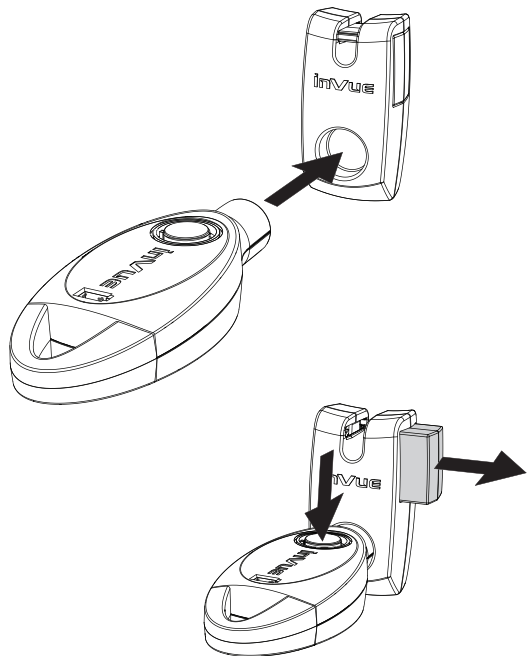


**IR2 Key**  
PK4400

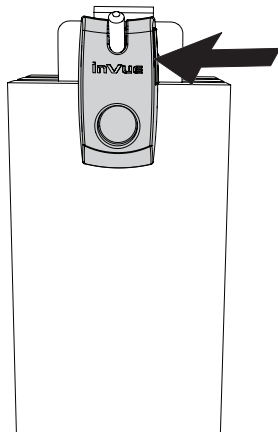
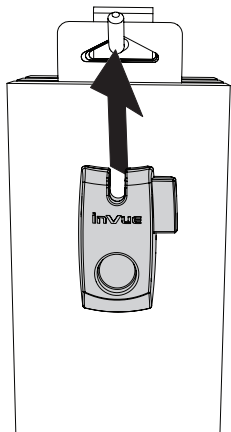
1



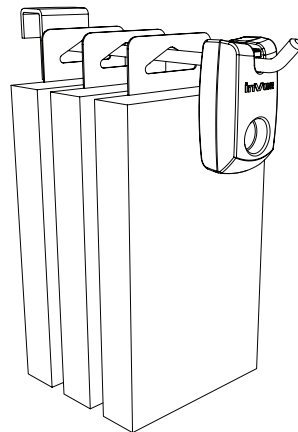
2



3



4



**invUE®**

tough security made easy

**[www.invuesecurity.com](http://www.invuesecurity.com)**

**Corporate Office (North America) // 704.752.6513 • 888.55.INVUE**

**Europe, Middle East & Africa // +31.23.8900150**

**Asia Pacific // +852.3127.6811**

**Latin America // +52.55.9000.3957**