

## NE150 Installation

### CT1505 (or Other USB-C Peripheral) Option



- 1 If installing a peripheral cable, lift the top cover from the base using the small lip above the LED on the front of the base.



- 2 Insert the USB-C end of the cable up through the hole in the base.



- 3 Plug the cable into the port in the base.



- 4 Route the cable along the groove in the base. Insert the included zip tie through the slots in the base.



- 5 Secure the zip tie over the cable.

**Note:** The zip tie included with the NE150 base can be reused. Push down on the small lever on the latching side (circled above) to loosen the zip ties.



- 6 Trim the excess material.



- 7 Replace the top cover.



- 8 Determine how the cables will be routed along the base when mounted. There are 2 paths in the base.
- The wider path is for the CT1505 peripheral cable
  - The thinner path is for the base's power cable
- The cable can also be routed to the center to be routed through a fixture.

# NE150 Installation

## Base Mounting Options



**9** Use the provided alcohol wipe to clean the depressions in the bottom of the base. Allow it to dry completely.



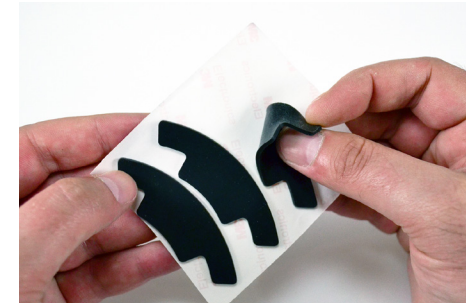
**10** If adhesive mounting the base to a surface, use the alcohol wipe to clean the surface. Allow it to dry completely.



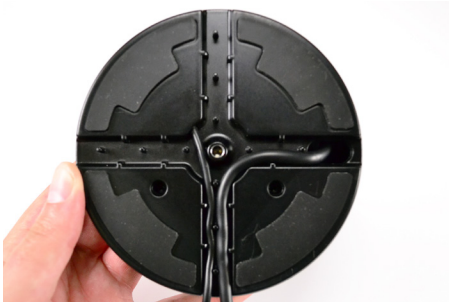
**11** Choose the option appropriate for your application.

- Adhesives for a more permanent mounting solution
- Non-Slip Pads for a solution that can be repositioned, or if using the stud mount option.

## CTBA004 Stud Mount Option



**12** If using the stud mount kit, ensure that the non-slip pads are being used. First, remove the pads from their backing.



**13** Place the pads into the depressions on the bottom of the base. Smooth each pad into place for at least 10 seconds.



**14** Thread the stud from the CTBA004 kit into the insert in the center of the base.



**15** **Optional:** Route the cables through a hole or slot in the fixture.



**16** Place the stand onto the surface so that the stud will descend through the hole in the fixture.



## NE150 Installation

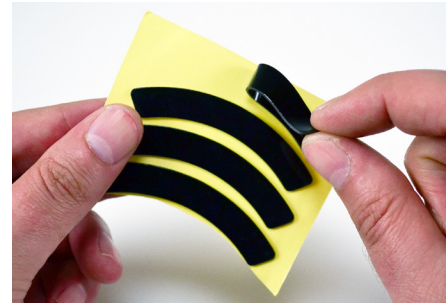


- 17 Beneath the fixture, place the yellow plastic washer onto the stud, routing the cables through the cutout in the washer.

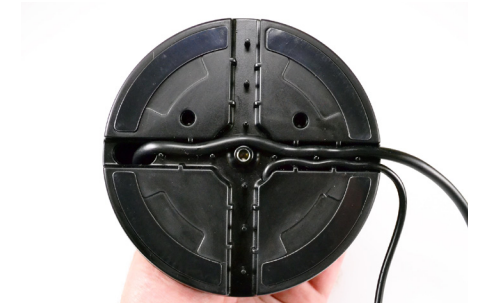


- 18 Thread the wingnut onto the stud and tighten fully.

### Adhesive Mount Option



- 19 First, remove the adhesives from their backing.



- 20 Place the adhesives into the depressions on the bottom of the base. Smooth each adhesive into place for at least 10 seconds.



- 21 Peel the clear film from the 4 adhesives



- 22 **Optional:** Route the cable(s) through a hole or slot in the fixture.



- 23 Place the base where desired and apply pressure for at least 10 seconds.

### Handle Installation (USB-C Tablets & Zebra ET51/56)



- 24 Use an alcohol wipe to clean the back of the tablet. Allow it to dry completely.

## NE150 Installation



- 25 Determine how the tablet will be mounted. The tablet can be mounted in either landscape or portrait mode.



- 26 Peel the clear film from the 2 adhesives on the handle.



- 27 Center the handle on the back of the tablet and apply pressure for at least 10 seconds.



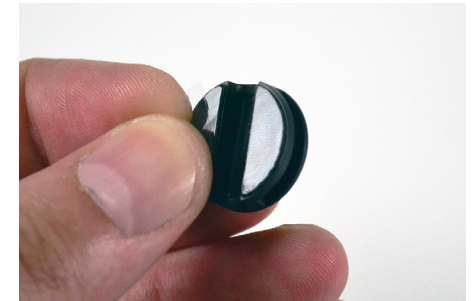
- 28 Plug the power connector into the tablet.



- 29 Peel the clear film from the 2 adhesives on the power connector protective cap.



- 30 Place the protective cap over the power connector, with the adhesives on the back of the tablet. Apply pressure for at least 10 seconds.



- 31 Peel the clear film from the 2 adhesives on the cable manager.

## NE150 Installation



- 32** Adjust the position of the cable to tighten any slack and place the cable manager over the cable. Apply pressure for at least 10 seconds.



- 33** Place the handle onto the base.

### Handle Installation with CT3012 (Apple Charge Only)



- 34** Use an alcohol wipe to clean the back of the tablet. Allow it to dry completely.



- 35** Plug the CT3012 power connector into the CT1503 handle.



- 36** Peel the clear film from the 2 adhesives on the handle.



- 37** Center the handle on the back of the tablet and apply pressure for at least 10 seconds.



- 38** Plug the connector into the tablet.



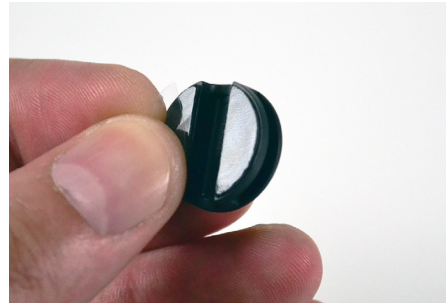
- 39** Peel the clear film from the 2 adhesives on the power connector protective cap.



## NE150 Installation



- 40** Place the protective cap over the power connector, with the adhesives on the back of the tablet. Apply pressure for at least 10 seconds.



- 41** Peel the clear film from the 2 adhesives on the cable manager.



- 42** Adjust the position of the cable to tighten any slack and place the cable manager over the cable. Apply pressure for at least 10 seconds.



- 43** Place the handle onto the base.

### Handle Installation with CT3112 (Apple Charge & Data)



- 44** Use an alcohol wipe to clean the back of the tablet. Allow it to dry completely.



- 45** Plug the CT3112 power connector into the CT1503 handle.



- 46** Peel the clear film from the 2 adhesives on the handle.



- 47** Center the handle on the back of the tablet and apply pressure for at least 10 seconds.

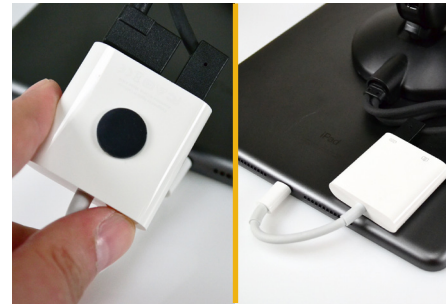
## NE150 Installation



48 Plug the iPad adapter (not supplied by InVue) into the tablet.



49 Plug the CT3112 connectors into the iPad adapter.



50 **Optional:** A small piece of adhesive can be placed on the adapter to keep it secured to the back of the tablet.



51 Peel the clear film from the 2 adhesives on the power connector protective cap.



52 Place the protective cap over the power connector, with the adhesives on the back of the tablet. Apply pressure for at least 10 seconds.



53 Place the handle onto the base.

### Powering Up



54 Plug the base's power cable into a PS566 power supply. Ensure that the tabs on the connectors are fully engaged. Plug the power supply into a power outlet.



55 If the base is powered up before a handle is docked, the LED on the front will be orange.

## NE150 Installation



**56** Once a handle is placed on the base, the LED will turn green to indicate that the tablet is receiving power.

**Note:** If installing on a Zebra ET51/55 using handle CT1506, the base LED indicator will turn green when the handle is docked on the base even if a tablet is not connected to the handle. This is due to the Zebra tablet charging prerequisites and not a system issue. Be sure the protective cap for the tablet power connector that is included with the Zebra handle is properly installed on the tablet to prevent the power connector from accidentally becoming dislodged. Check the tablet's charging indicator to confirm tablet is charging when docked.

### Lockdown & General Usage



**57** Out of the box, the lockdown function is not engaged and the handle can be freely lifted from the base.



**58** To engage the lockdown, place the magnet key into the depression on the base, and turn it 90 degrees clockwise.



**59** When the lockdown function is engaged the handle cannot be lifted from the base.



**60** To disengage the lockdown, place the magnet key into the depression and turn it 90 degrees counterclockwise. The handle will be able to be lifted again.



**61** During customer/associate interactions, the head of the handle can be flipped to present transaction details.

### Removal



**62** If removing the base, remove the handle and tablet from the base first. Then insert the hook of the CT1507 removal tool into one of the cable openings on the base. The padded tab should sit against the base.



## NE150 Installation



- 63 Rotate the handle clockwise to break the adhesive bond.



- 64 Peel the old adhesives from the base and replace with new adhesives from the CT1511 replacement adhesive kit. The base is now ready to be reinstalled.



- 65 If removing the tablet, first remove the power connector protective cap and the cable managers.



- 66 Unplug the power connector from the tablet.



- 67 Place the CT1507 removal tool around the handle where it is adhered to the tablet.



- 68 Place the tablet on its side and apply force up and down to break the adhesive bond.



- 69 Peel the old adhesives and replace with new adhesives from the CT1509 replacement adhesive kit. The handle is now ready to be reinstalled.

SD0925 Rev1 04/03/25