

W2000

Stand with Quick Disconnect - ZW2050-B/W

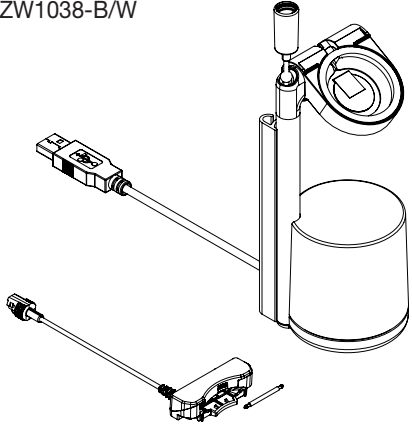
Samsung OEM Trim Kit - ZW1034-B/W

Q3 2021 Small Sensors - ZW1035-B/W

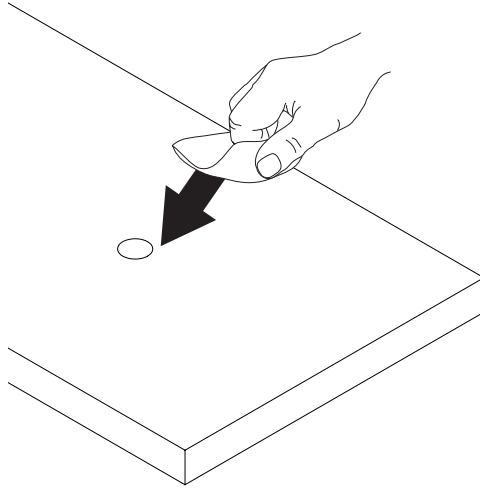
& ZW1037-B/W

Q3 2021 Large Sensors - ZW1036-B/W

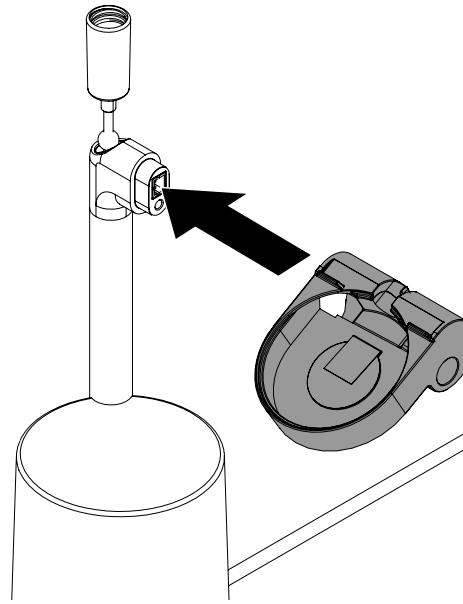
& ZW1038-B/W



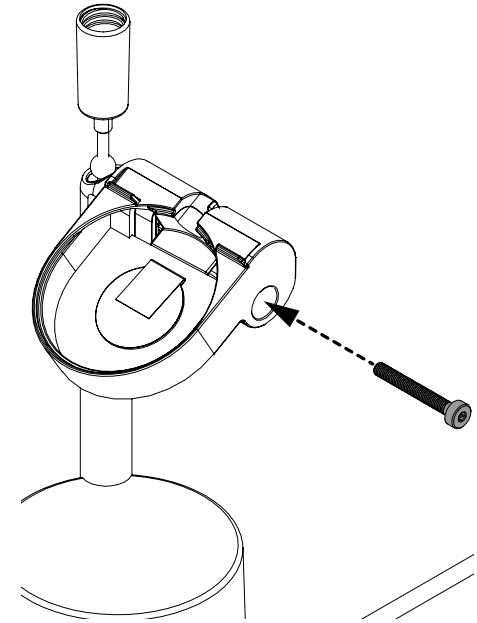
- 1** Use the provided alcohol wipe to clean the fixture where the stand will be placed. Allow it to dry completely.



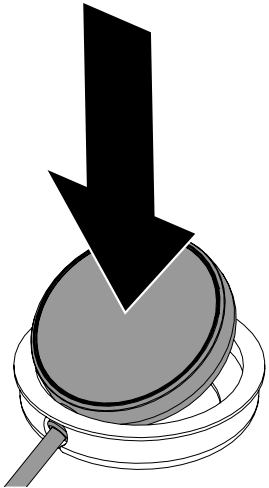
- 2** **OEM Charger Trim Kit Installation:**
Place the OEM charger cradle onto the stand.



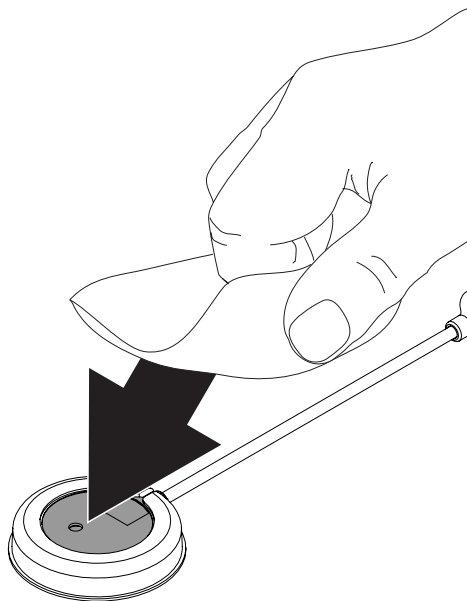
- 3** Secure the charger cradle to the stand using the provided screw.



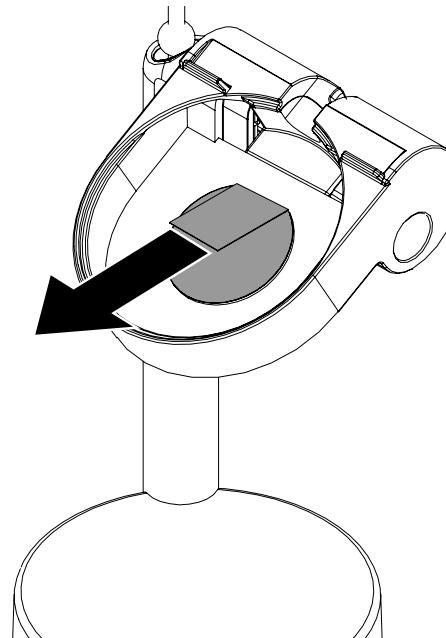
- 4** Place the OEM charger into the rubber cradle insert supplied with the OEM Kit. Ensure that the strain relief on the charger fits through the gap in the insert.



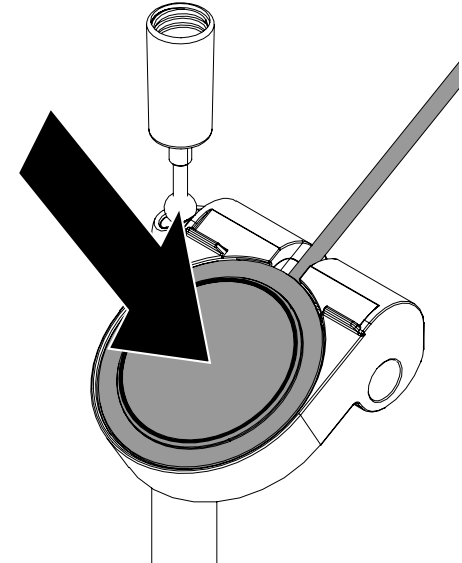
- 5** Use an alcohol wipe to clean the bottom of the OEM charger. Allow it to dry completely.



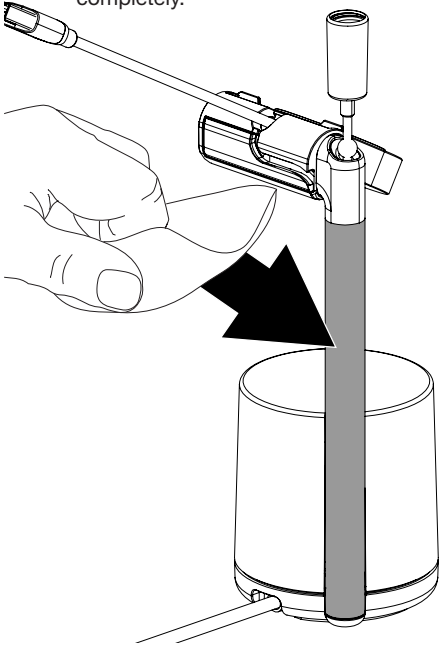
- 6** Pull the red tab from the adhesive in the charger cradle.



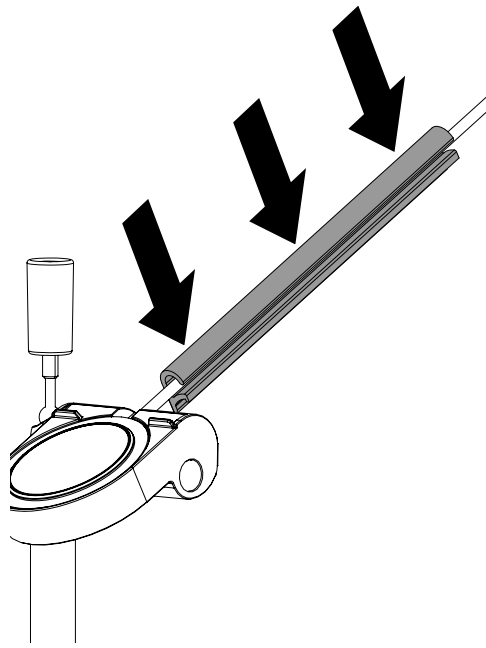
- 7** With the charger cable facing towards the groove in the charger cradle, place the OEM charger and cradle insert into the cradle. Apply pressure for at least 10 seconds.



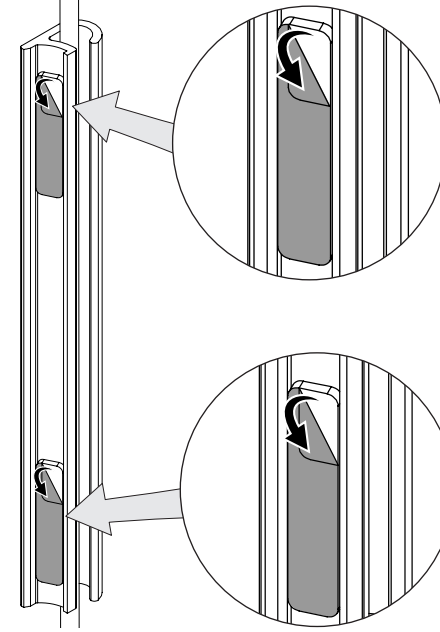
8 Use the provided alcohol wipe to clean the stem. Allow it to dry completely.



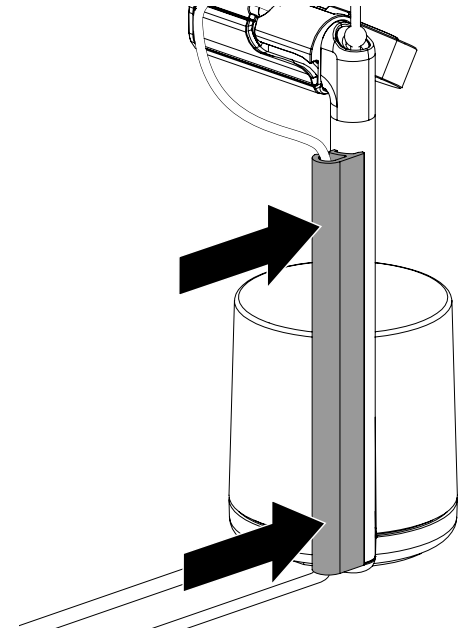
9 Route the OEM charger cable into the cable guide.



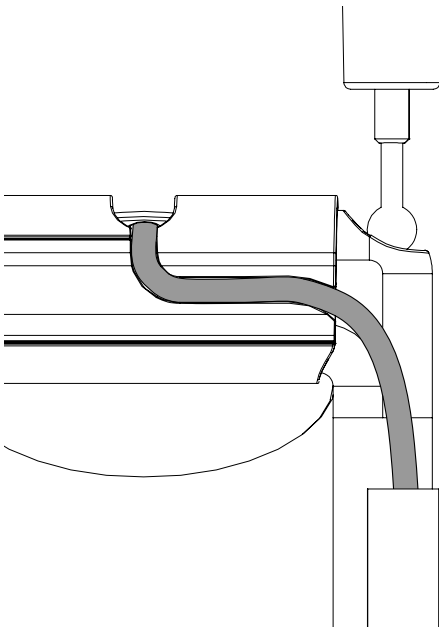
10 Peel the clear film from the 2 adhesives on the cable guide.



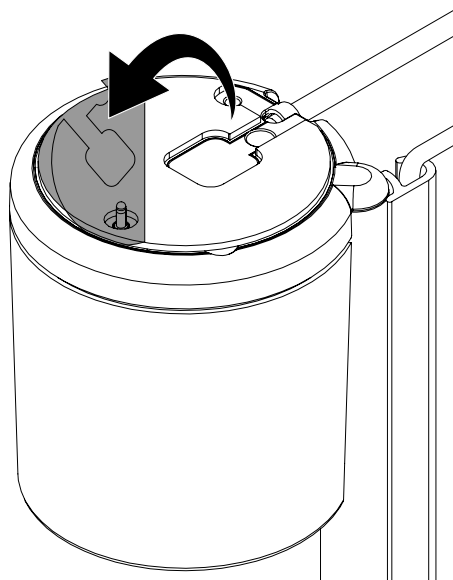
11 Align the bottom of the cable guide to the bottom of the stem. Apply pressure for at least 10 seconds.



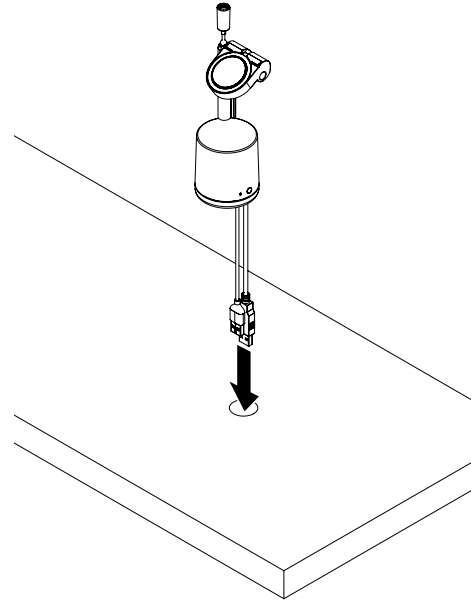
12 Route the cable along the track in the back of the cradle. Adjust the cable in the cable guide as necessary.



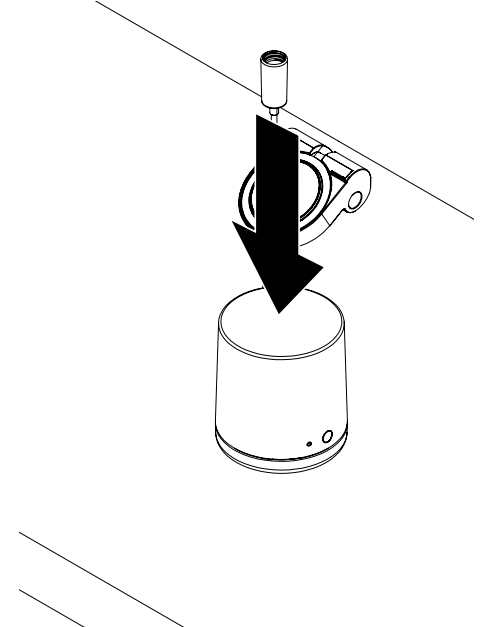
13 Stand Installation:
Peel the clear film from the adhesive on the bottom of the stand.



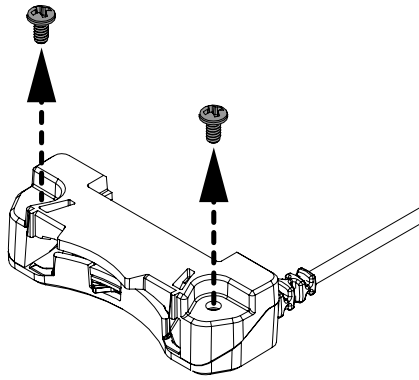
14 Optional:
Route the power cable and OEM charger cable through a hole or slot in the fixture.



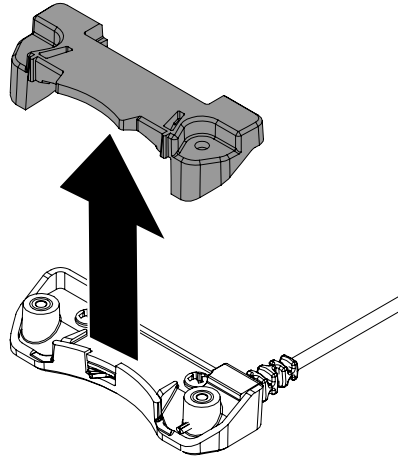
15 Place the stand in the desired location and apply pressure for at least 10 seconds.



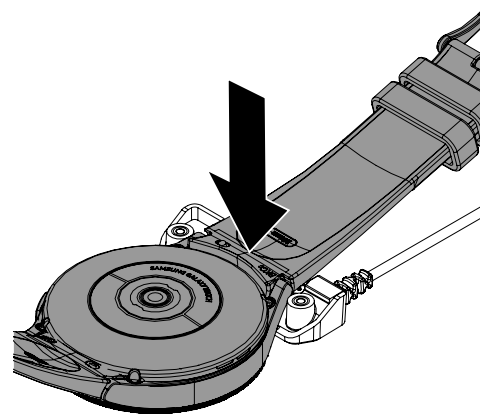
- 16 Band Sensor Installation:**
Remove the 2 screws from the sensor using a small Philips head bit.



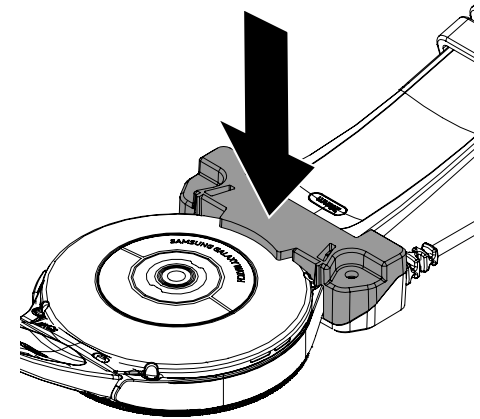
- 17** Remove the bottom half of the sensor.



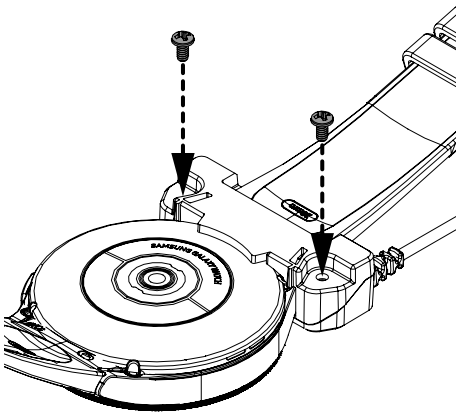
- 18** Place the buckle band (with the watch facing down) over the top half of the sensor.



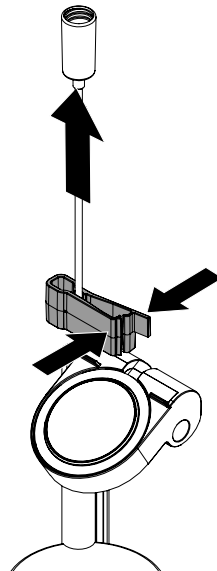
- 19** Place the bottom cover over the watch band.



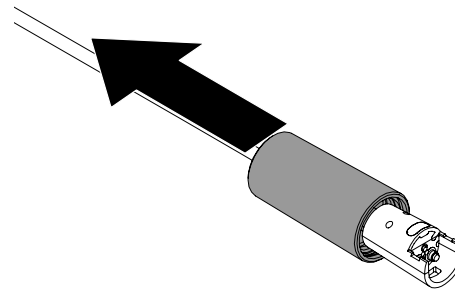
- 20** Replace and tighten the 2 screws to secure the 2 halves of the sensor around the wearable.



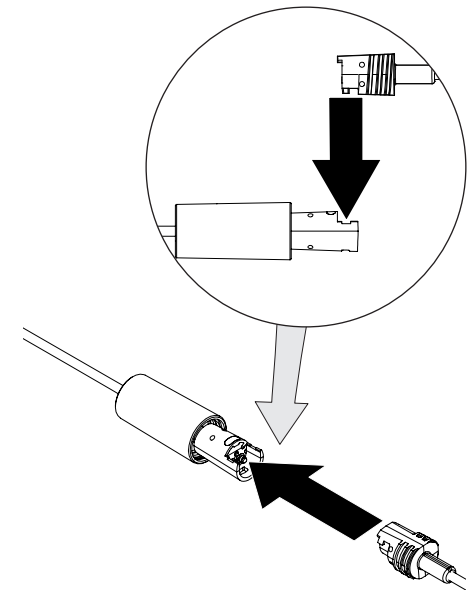
- 21** Lift the connector from the stand, pulling enough cable to aid in the installation. Snap the included cable stop clip around the cable to prevent it from retracting.



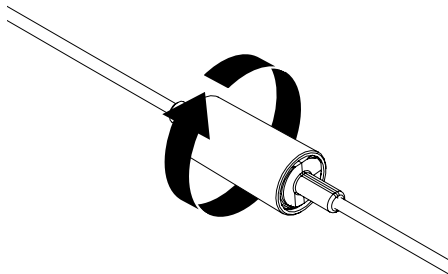
- 22** To connect the sensor head, pull back the barrel on the recoiler cable.



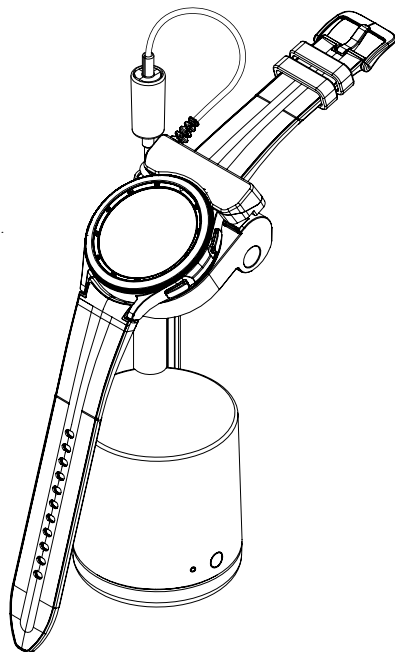
- 23** Insert the sensor end into the barrel on the recoiler cable.



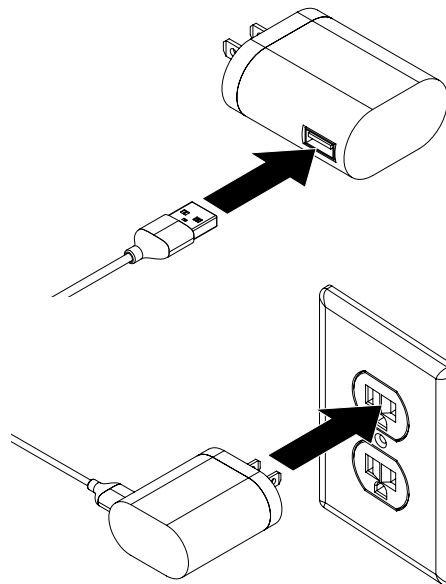
- 24** Twist the barrel over the sensor connection to secure.
Note: The internal threads are reversed, be sure that the threads are fully engaged when tightening.



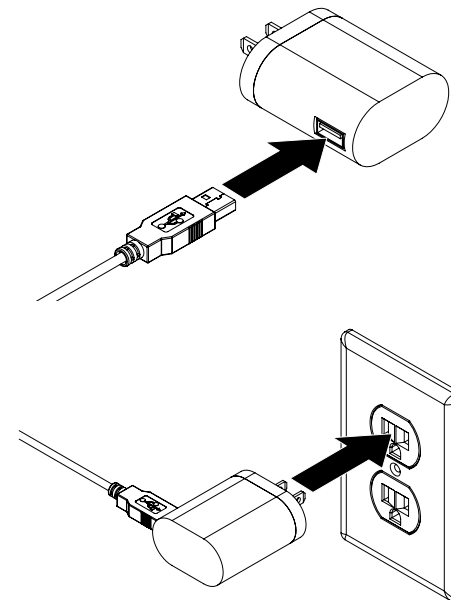
- 25** Place the watch and sensor onto the charger.



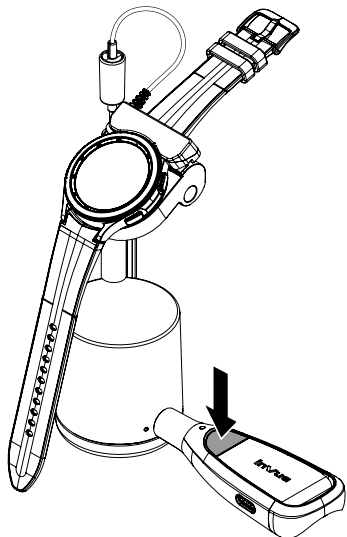
- 26** Plug the OEM charger cable into the power supply. Plug the power supply into an outlet. Make sure that the watch is receiving power.



- 27** Plug the stand's power cable into a PS515 power supply and plug the power supply into a power outlet.



- 28** Place a charged and coded OneKEY against the lens on the side of the stand. Press the button on the key to transfer the code to the stand. This method is also used to deactivate the alarm.



SD0849 Rev0 06/22/21

invue

www.invue.com

NA / LATAM // 704.752.6513 • 888.55.INVUE

EMEA // +31.23.8900150

APAC // +852.3127.6811

© 2021 InVue Security Products Inc. All rights reserved.
InVue is a registered trademark of InVue Security Products.