



Service Manual

Electric with Induction Stove

Model: 982.96873520



WARNING

Repairs of the appliance should be carried out by a qualified technician only. Incorrect repairs may result in dangerous situations. The power supply of the appliance should be turned off when it is being repaired. Reconnect all grounding devices and wiring before applying power. **Failure to follow the above can result in injury, electrical shock, or death.**

Catalog

1. Product appearance introduction	3
1.1、Product Introduction	3
1.2、Serial Number Breakdown	3
2. Working Diagram	4
3. Safety precautions (please be sure to follow)	7
4. Product Introduction	7
5. Basic dimensions of the product	8
6. Technical parameter	8
7. Control Panel	8
8. Main Function Introduction	8
8.1、Stove function	8
8.2、Oven function	9
9. Installation and maintenance tools for electric ovens	9
10. Common troubleshooting	10
10.1、Fault code table for stove	10
10.2、Common fault description	11
10.3、Product disassembly.	12
10.3.1、Stove panel, induction tray, coding switch, and induction display board	12
10.3.2、Cooling fan, protector, cooling thermostat, gear switch, temperature control switch, and three key electronic timer	14
10.3.3、Top and back electric heating tubes, circulating fan, bottom electric heating tube and lamp assembly	16
10.3.4、Door assembly	19
10.3.5、Buckle plate, left and right side plates	19
10.3.6、Power cord	19
11. Product breakdown diagram.	21
11.1、Cooktop +control panel.	21
11.2、Door assembly	23
11.3、Oven	24

1. Product Appearance Introduction

1.1 Product Introduction

- 1)Three key touch electronic timer;
- 2)Stove One Stove Plate Encoding Switch and Knob;
- 3)Stove Two Stove Plate Encoding Switch and Knob;
- 4)Stove Three Stove Plate Encoding Switch and Knob;
- 5)Stove Four Stove Plate Encoding Switch and Knob;
- 6)Function switch and knob;
- 7)Temperature control switch and knob;
- 8)Backsplash assembly;
- 9)Lighting assembly;
- 10)Suction duct baffle assembly;
- 11)Top electric heating tube;
- 12)Door bracket;
- 13)Door handle assembly;
- 14)Door panel glass;
- 15)Lower buckle plate assembly;
- 16)Oven anti slip feet;
- 17)Left front induction cooker tray;
- 18)Left rear induction cooker tray;
- 19)Right rear induction cooker tray;
- 20)Right front induction cooker tray;
- 21)Stove panel frame assembly;
- 22)Induction cooker display board;
- 23)Microcrystalline glass panel: ;
- 24)Rack;
- 25)Grease tray;
- 26)Grille grill;

1.2 Serial Number Breakdown

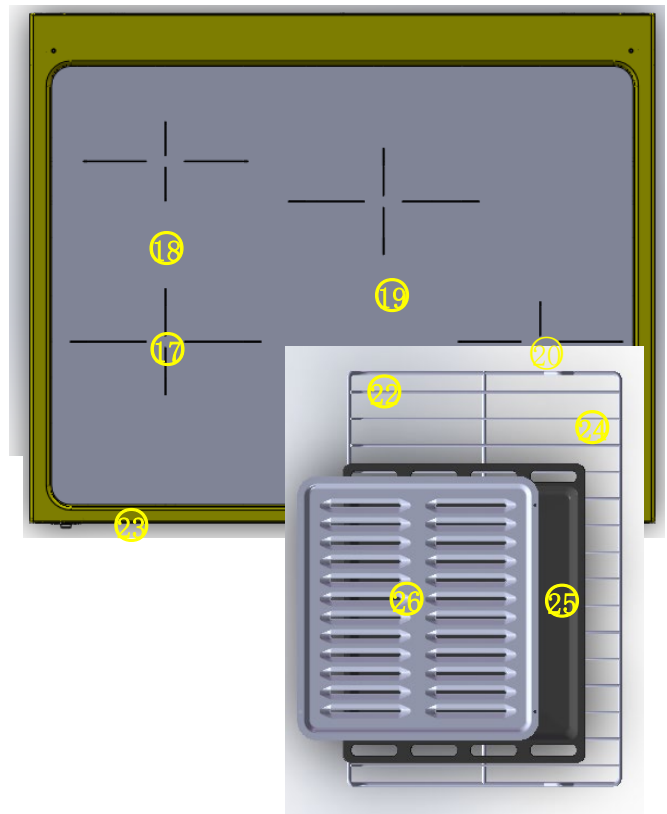
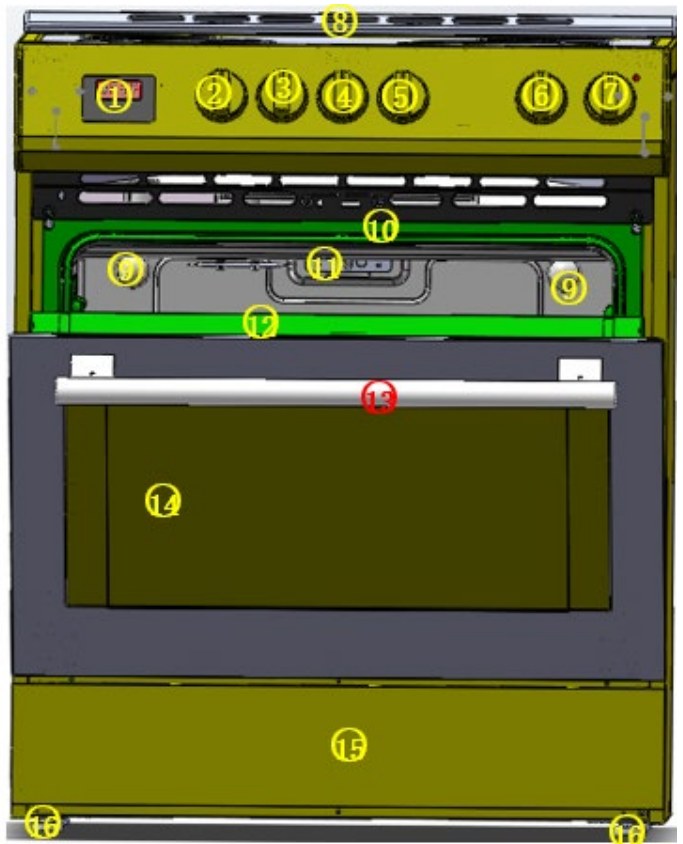
15 characters length

XXXXXYMMDD0001

XXXXXX is the end 5 characters of customer's model number

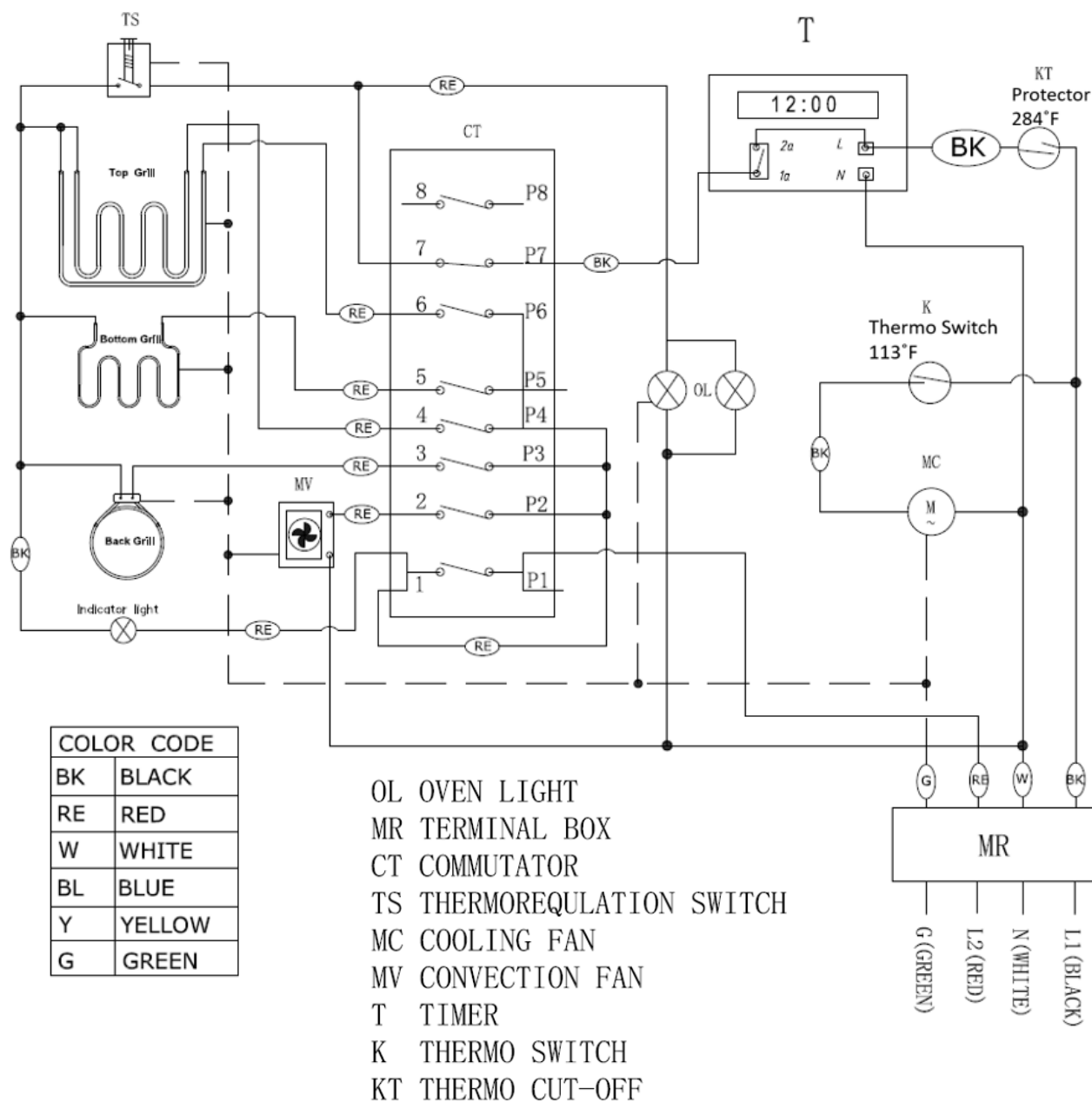
YY is year of production

MM is month of production



2. Working diagram

2.1 Schematic Diagram for oven



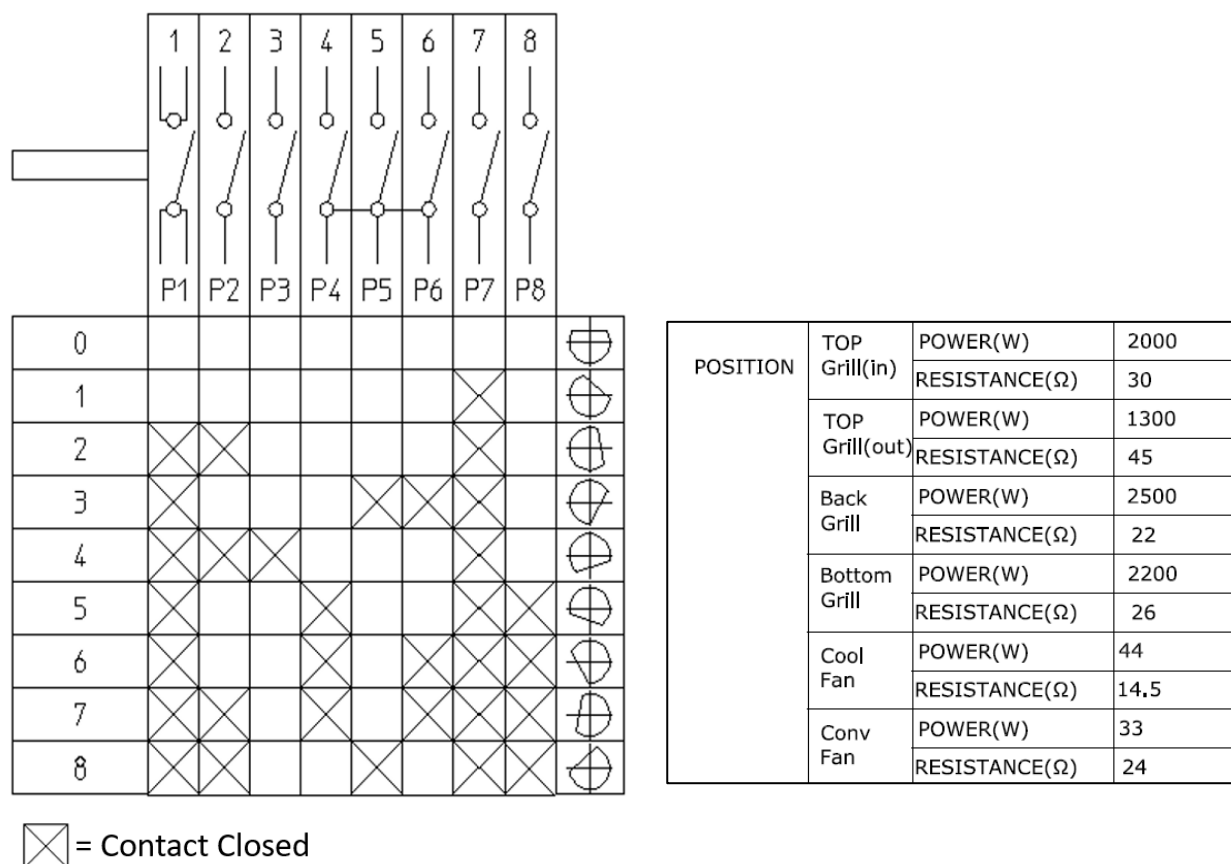
Note #1: Indicator light will cycle on/off on any heat function, based on oven thermostat (TS) status

Note #2: Timer contact 1a-2a controls the L1 circuit to the heating components.

Timer contact 1a-2a is closed during a non-timed function and also during a timed function ON period.

Note #3: A power cord is included and connected for Canadian model.

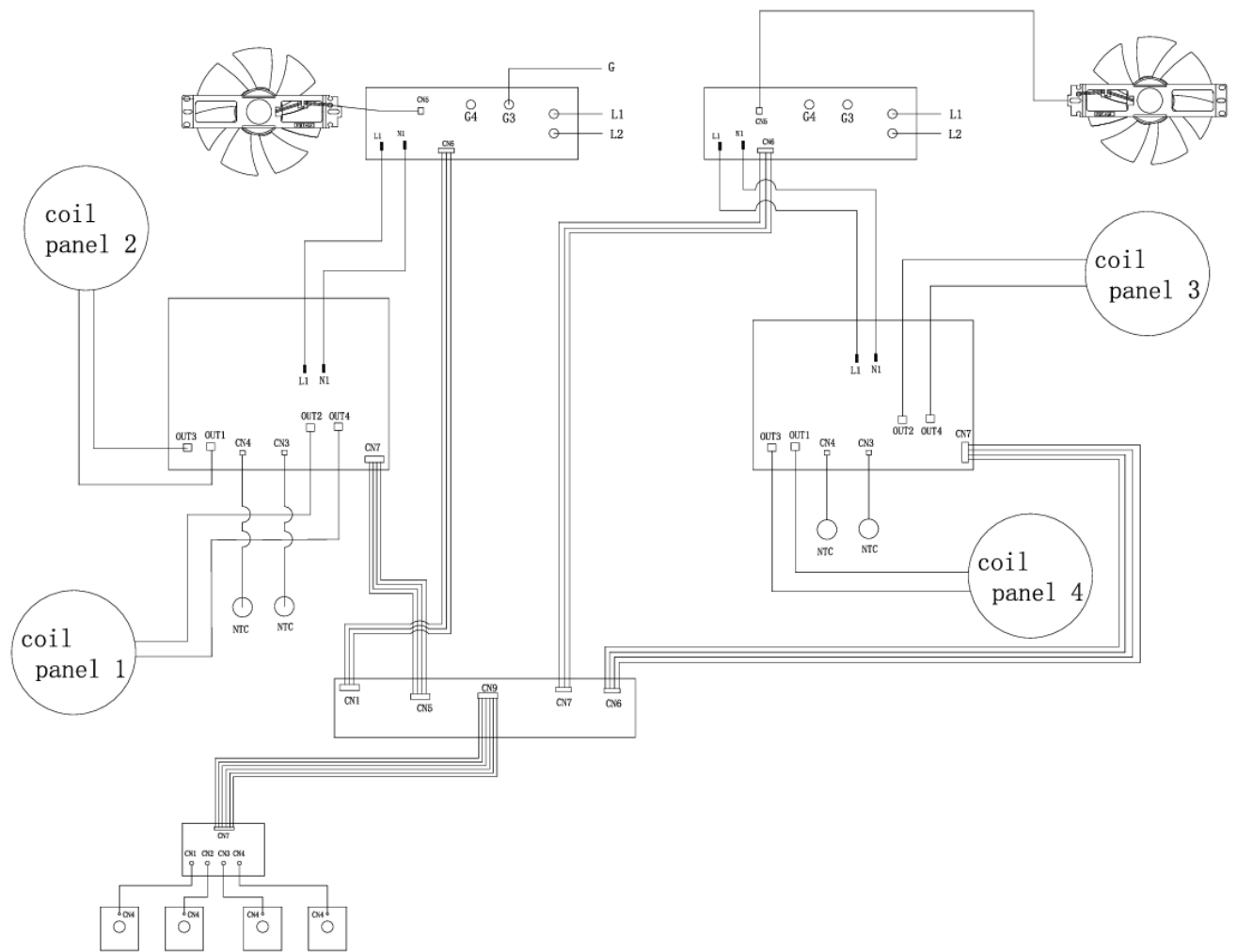
2.2 Function switch (CT Commutator) Working Diagram



Functions details w/Timer (T) Closed and Oven Thermostat (TS) closed:

1. [Oven Light] With Timer closed, Oven light (P7) also provides L1 to T-stat, total power 50w.
2. [Defrost] (P1+P2+P7) Oven light + Ind' light + Conv fan+ L2 to P2-P6 , and the total power is 80w.
3. [Bake] (P5 + P6) Broil (outer) + Bake, the total power is 1300+2200+50=3550w.
4. [Air Fry]: [AIR FRY] (P2+P3) Conv fan + Conv element, and the total power is 2500+30=2580w.
5. [Lo Broil] (P4+P8) Broil (inner) only (P8 is not used), and the total power is 2000+50=2050w.
6. [Hi Broil] (P4+P6+P8) Broil (Inner & Outer), and the total power is 1300+2000+50=3350w.
7. [Conv Broil] (P2+P4+P6+P8) Conv fan+Broil (inner)+Broil(outer), and circulating fan are working, the total power is 1300+2000+50+30=3380w.
8. [Conv Bake] (P2+P5+P8) Conv fan+Bake, and the total power is 2200+30+50=2280w.


2.3 Wiring Diagram for induction cook-top



Note #1: L1 & L2 at PCB is connected to the power cord terminal box (MR) on the oven diagram.

LF	POWER(W)	2100
	RESISTANCE(mΩ)	≤60
LR	POWER(W)	1500
	RESISTANCE(Ω)	≤65
RF	POWER(W)	1500
	RESISTANCE(Ω)	≤65
RR	POWER(W)	3700
	RESISTANCE(Ω)	≤60

3. Safety precautions (please be sure to follow)

 禁止	When moving the oven, please use a small cart and do not drag the oven with the handle position
	During the operation of the oven or just after the program is completed, the cabinet is in a high temperature state, and water should not be sprayed into the chamber to avoid damaging the enamel surface.
	Maintenance personnel are absolutely prohibited from modifying internal wiring without authorization.
	Do not disassemble or repair without authorization.
	If the power cord is damaged, it must be replaced by the manufacturer, their maintenance department, or similar professionals.
	Do not store flammable, explosive, corrosive, or other items in the oven.
	Do not use loose or poorly connected power sockets.
	Do not damage or squeeze or pinch the power cord with heavy objects.
	To use the original accessories of the product
	Do not touch the oven with wet parts of your body.
	Do not use the oven barefoot.
	Do not drag the oven or power cord to disconnect the socket.
	Do not use power sources other than 240V/60Hz.
	If the oven is not in use, unplug the oven power socket。
	Do not use this product outdoors.
	Do not use this product for purposes other than cooking food.
	Do not use an oven as a heating device

4. Product Introduction

- 1) Voltage/Frequency 240/120V-60Hz
- 2) The top of the product is an induction cooker, and the bottom is a full touch electric oven (controlled by a stove mechanical code switch and an oven mechanical electronic control).
- 3) Product stove configuration: 4-eye stove head.
- 4) Oven 8 functions.
- 5) The oven liner guide rail has 7 levels and a liner volume of 5.0 cubic inches.
- 6) Built in protective device.

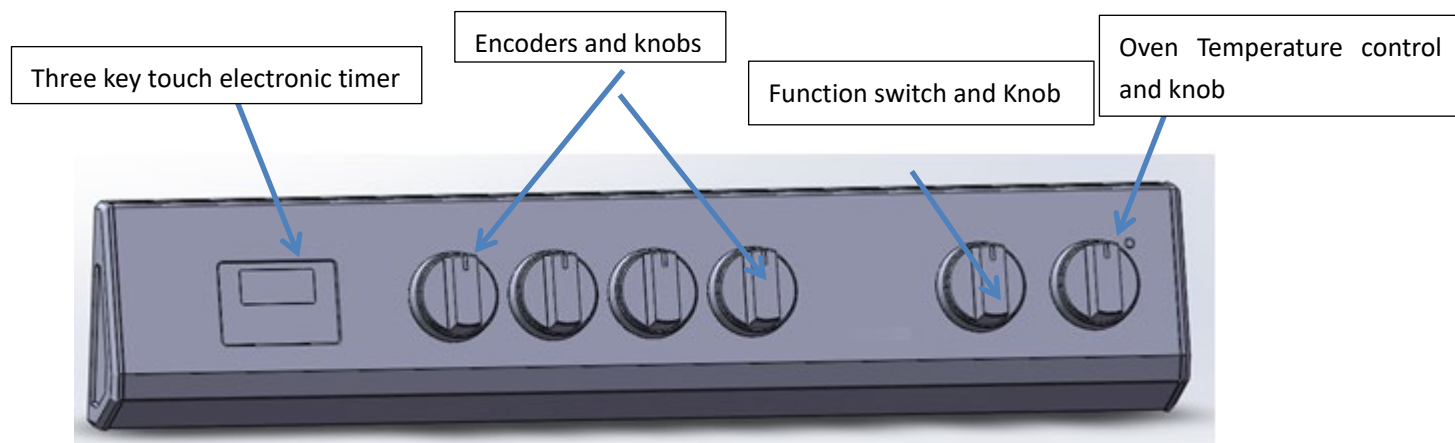
5. Basic dimensions of the product

- 1) Product dimensions (length * depth * height): 29.8"x26.2"x35.8"(758mm * 665mm * 910mm)
- 2) Backsplash size: 29.8"x2.7"x1.0"(758mm * 55mm * 25mm)
- 3) Product packaging size:33.1"x29.3"x39.4" (842mm * 740mm * 989mm)

6. Technical parameter

- 1) The product structure meets the requirements of UL858 standard.
- 2) Induction cooker heating for stoves
- 3) The stove is controlled by a coded switch
- 4) Oven configuration with 4 heating tubes; One dual on top, bottom, and back
- 5) The maximum setting temperature for the normal function of the oven is 500F
- 6) The product comes with adjustable feet, with an adjustable range of 10-50mm
- 7) The Oven door adopts a 3-layer glass structure

7. Control Panel



8. Main Function Introduction

8.1 Stove function

Stove rated 7200W: Oven rated 3550W

Left Front Element	9" Dual: 1800/2100W(Watts)
Left Rear Element	6.9"Dual :1200/1500W(Watts)
Right Front Element	6.9"Dual :1200/1500W(Watts)
Right Rear Element	11" Dual : 2300/3700W (Watts)

8.2 Oven function

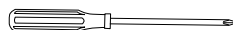
NO	Function	Working principle	Power
1	Light	Lighting work	50w
2	Defrost	Lighting+circulating fan working	80W
3	Bake	Top electric heating tube+bottom heat tube+lighting working	3550W
4	Airfry	Back electric heating tube+circulating fan+lighting working	2580W
5	L Broil	Top mounted electric heating tube heating+lighting working	2050W
6	H Broil	Top external electric heating tube+top internal electric heating tube+lighting working	3350W
7	Conv Broil	Top external electric heating tube+top internal electric heating tube+circulating fan+lighting working	3380W
8	Conv Bake	Bottom electric heating tube+circulating fan+lighting working	2280W

9. Install and repair oven tools:

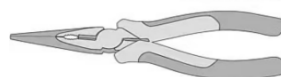
- Multi-meter: measures AC/DC voltage, resistance.



- Ordinary screwdrivers: used for disassembling



- Sharp nose pliers: disconnect and plug in the connectors



- Diagonal pliers: used for cutting zip ties





- Electric screwdriver



10. Common troubleshooting

10.1、 Fault code table for induction stoves

Fault protection code	fault protection category	solution
E 1	Synchronization loss	Replace module
E 2	Input voltage high protection	Replace module
E 3	Low input voltage protection	Replace module
E 4	Pot sensor open circuit	Replace module
E 5	Pot sensor short circuit	Replace module
E 6	IGBT sensor open circuit	After the temperature naturally decreases, restart the switch
E 7	IGBT sensor short circuit	Replace module
E 8	IGBT sensor high temperature	Replace module
E 9	Communication malfunction	Replace module
E E	Flat bottomed pan detection: no pot detected	Check if the communication cable between the detection module and the display board has come loose
	Waste heat indicator: Panel temperature exceed	Replace the cookware
	IGBT sensor open circuit	Caution: Hot

Fault code is displayed when active

10.2、 Fault descriptions for oven

Fault phenomenon	Initial judgment of reasons	Debugging (Solution) Methods	Corresponding spare parts
Hot air around the door	Door seal aging, door seal fixing parts falling off	Door seal changing	Door seal
The glass inside the door is not securely installed	1、 The left and right fixing blocks of the inner glass are broken 2、 The bracket on the door is not installed properly	Replace the left and right fixing blocks of the inner glass	left and right fixing blocks
The Oven doesn't work	1. Not connected to power supply; 2. The power supply is abnormal; 3. Overheating protector damaged;	Check if the power is connected; Replace the overheat protector ("KT" on diagram)	Overheat protector: Opens @ 140°C (284°F) Closes @ 120°C (248°F)
The circulating fan has noise or is not working.	1. The circulating fan is deformed; 2. Interference of connecting wires.	Adjust the wires again, measure the voltage of the circulating fan with a multimeter, and check the circulating fan	Circulation fan
The light bulb does not light up	The wire is loose and detached, the light bulb is damaged, Oven function switch P7.	Use a multimeter to measure the voltage to the bulb. If the bulb is damaged, replace it	Light bulb
The cooling fan is not working	1. The connector is not securely connected; 2. The cooling fan is broken. 3. Fan thermostat is open	Check the resistance of the cooling fan and plug in the connectors properly; If there are still problems, please replace the parts.	Cooling fan Fan thermostat Closes @ 45°C (113°F) Opens @ 44°C (111.2°F)
The power of the induction cooker is incorrect	1. The cooktop surface broken 2. Using the wrong pot	Use an iron pot with a thick bottom Replace the induction heating module	Induction module
Electric heating tube does not work	1. The connecting wire is not properly connected 2. Electric heating tube damaged	Check if the wires are burnt or plugged tightly, and check if the electric heating tube has resistance.	Electric heating tube
The whole machine has no power when powered on.	1.The timer is abnormal 2.Wrong wiring of connecting wires;	1.Replace the timer Confirm the wire timer according to the line markings	Timer

10.3、 Product disassembly

Note: Before disassembling and repairing the product, please make sure to unplug the power plug.

10.3.1、 Replace the stove panel, heating module, encoder switch, and induction cooker display board

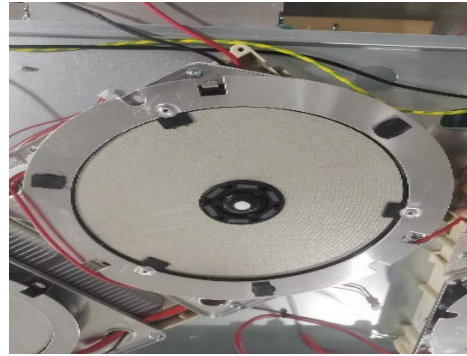
- Unplug the power supply



- Use a screwdriver to remove the 10 screws that fix the left and right blocks of the stove panel, and lift the rear end upwards to extract the stove panel
- Use a screwdriver to remove the three limit blocks in front of the stove panel, then apply the limit blocks to the new stove panel and replace it with a new one.



- Use Sharp nose pliers to pull out all the connecting wires of the heating module , remove the silicone on the heating module nut, use a sleeve to remove the nut, and then remove the heating module;



- Use a screwdriver to remove the fixed plate of the heating module, and install it on the new heating module according to the number of heating module one by one. Then reinstall the new heating module components on the chassis, plug in the wires and ensure that the wires do not detach;



- Pull off the knob and knob base of the encoder switch, and use a screwdriver to remove all the fixing screws of the encoder switch;

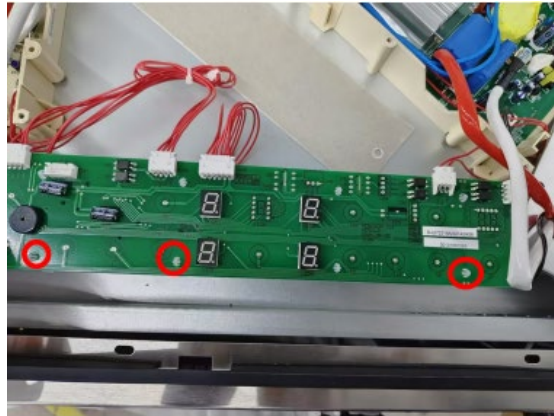


- Pull out all the wires of the encoder switch, replace with new encoder switch(s), and re-insert the wires into the new encoder switch according to the wire markings;

Note: After inserting the wire back, pull it back to confirm if the wire has come off;



- Pull out the connecting wire between the induction cooker display board and the induction cooker module, then remove the display board from the spring buckle and replace it with a new induction cooker display board.



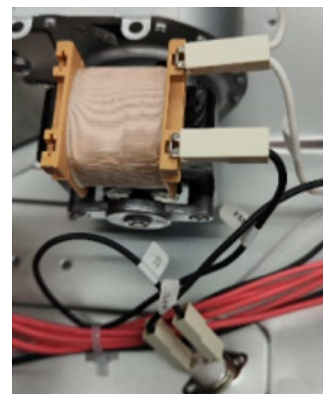
10.3.2、Replace the cooling fan, protector, cooling thermostat, function switch, temperature switch, and three key electronic timer

- Unplug the power supply

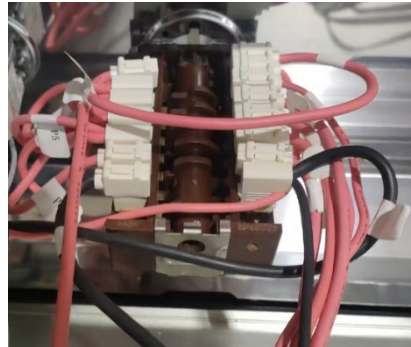
Note: To remove the stove panel, follow



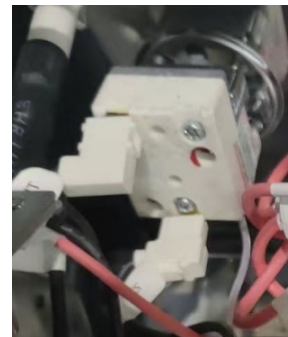
- Pull out the connecting wire on the terminal of the cooling fan, then remove the three screws on the cooling fan and the exhaust duct cover plate, as well as the two screws on the left and right sides. Remove the cooling fan and replace it with a new one.
- Pull out the connecting wire of the cooling fan thermostat, then remove the two temperature controllers, remove the cooling fan thermostat, and replace it with a new cooling fan thermostat.
- Unplug the wires from the two terminals on the protector, then remove the two screws, remove the protector, and replace it with a new one.



- Pull out the knob, remove the two screws that secure the function switch, remove the line of the function switch, and replace the function switch with a new one.



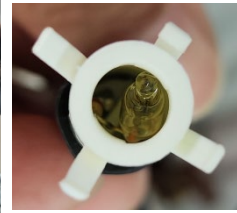
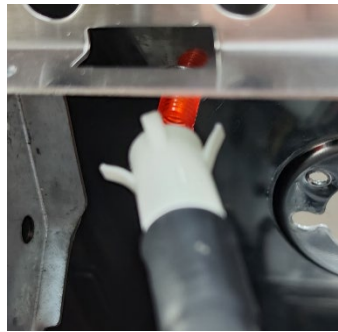
- Pull out the knob, remove the 2 screws that fix the temperature control switch, pull out the temperature control wire and probe wire, and replace the temperature switch with a new one.



- Use needle-nose pliers to pull out the connecting wire of the timer terminal, and then use a screwdriver to remove the 4 screws that fix the timer, and replace it with a new three key electronic timer.

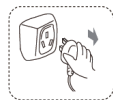


- Indicator light can be changed by twist the temperature switch light channel out. Then change a new temperature switch assembly.



10.3.3、 Replace the top and back electric heating tubes, circulating fan, and bottom electric heating tube,lamp assembly

- Unplug the power



- Use a screwdriver to remove all 13 screws securing the rear cover plate and remove the rear cover plate.

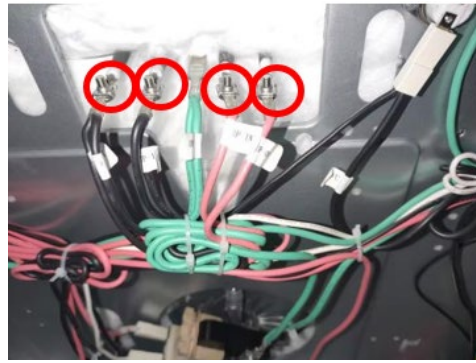
Note: Please wear gloves when disassembling the rear cover to prevent sharp edge injuries;



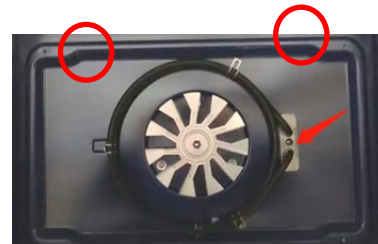
- Use a screwdriver to remove the three screws that fix the electric heating tube in the inner pot, then remove the screws that connect the wires and terminals of the electric heating tube. Then, horizontally pull out the top electric heating tube from the inside of the inner pot and replace it with a new one. Finally, reinstall the connecting wires and locking screws of the electric heating tube.



Be sure to reconnect the wires in the correct order/location for proper operation.



- Use a screwdriver to remove the 4 fixing screws from the back electric heating tube baffle and remove the back electric heating tube baffle.
- Use a screwdriver to remove the fixing screws of the back electric heating tube connecting wires, then remove the fixing screws of the electric heating tube inside the inner container, remove the electric heating tube, replace it with a new back electric heating tube, and reinstall all screws.



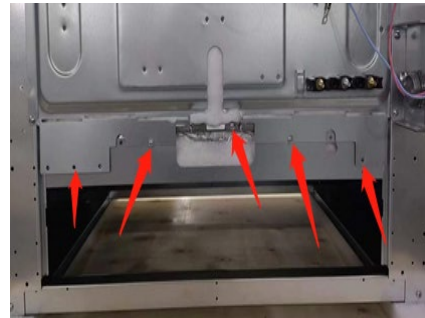
- Remove the fixing nut of the fan blade clockwise using a 10mm socket and remove the fan blade;



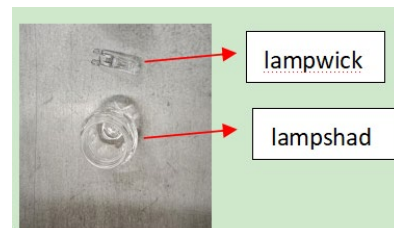
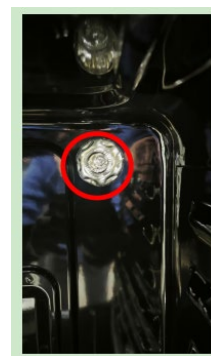
- Unplug the connecting wire terminals of the circulating fan, remove the three fixing screws on the bottom cover of the inner tank, remove the circulating fan, replace it with a new one, and reinsert the connecting wires.



- Use a screwdriver to remove the fixing screws of the bottom electric heating tube connecting wires, remove the 2 screws on the storage room floor, and then remove the screws that fix the electric heating tube and the fixing plate
- Fold the inner liner along the bending hole and remove the bottom electric heating tube from the lower bracket.
- Insert the new electric heating tube directly into the bottom electric heating tube fixing plate, then fasten the fixing plate buckle to the electric heating tube and lock it with screws.



Turn the lampshade
counterclockwise by hand until it
falls off, exposing the wick, pulling
out the wick, replacing it with a new
wick, and then turning the
lampshade clockwise until the



10.3.4、Replace the door assembly

- Open the door to the maximum angle;
- Lift up the safety buckles on both sides of the flip door hinge and open it to the maximum position;
- Close the flip door upwards, press the safety buckle against the hinge, and then lift the flip door upwards to remove it.
- Replace the flip door with a new one, fix the hinge pull card slot onto the flip door hinge fixing bracket, press down on the flip door, close the safety buckle back, and press it.



- After removing the stove panel, switch board, and door assembly (the removal principle is the same as above), use a screwdriver to remove the screws that fix the lower buckle plate, remove the lower buckle plate, and replace it with a new one.



- Use a screwdriver to remove the fixing screws on the front of the outer panel (left and right).

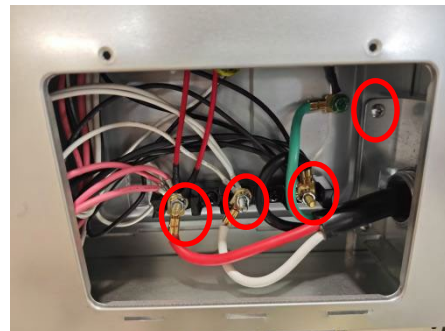
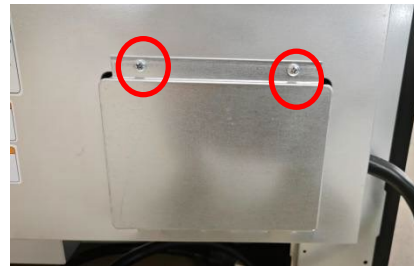


- Use a screwdriver to remove the fixing screws on the back and bottom of the outer side panels (left and right), lift the side panels upwards, and then pull them out to remove the outer side panels and replace them with new left and right side panels.



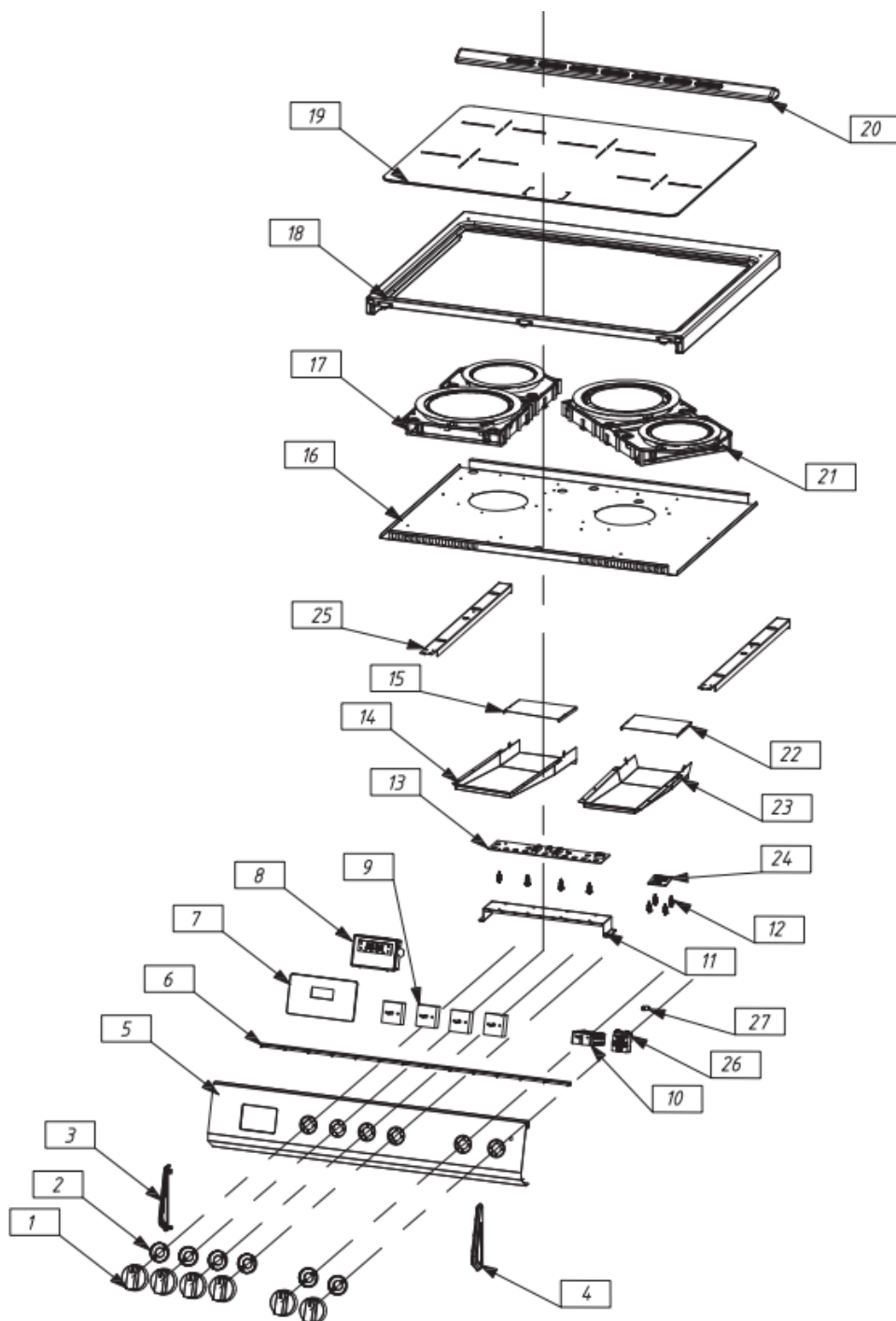
10.3.6、Replace the Power cord

- Remove the two screws of the power cable maintenance baffle using a screwdriver, remove the maintenance baffle, remove the three compression nuts and one ground bolt using a sleeve, remove the two screws of the power cable fastener using a screwdriver, remove the power cable, and replace the power cable with a new one.



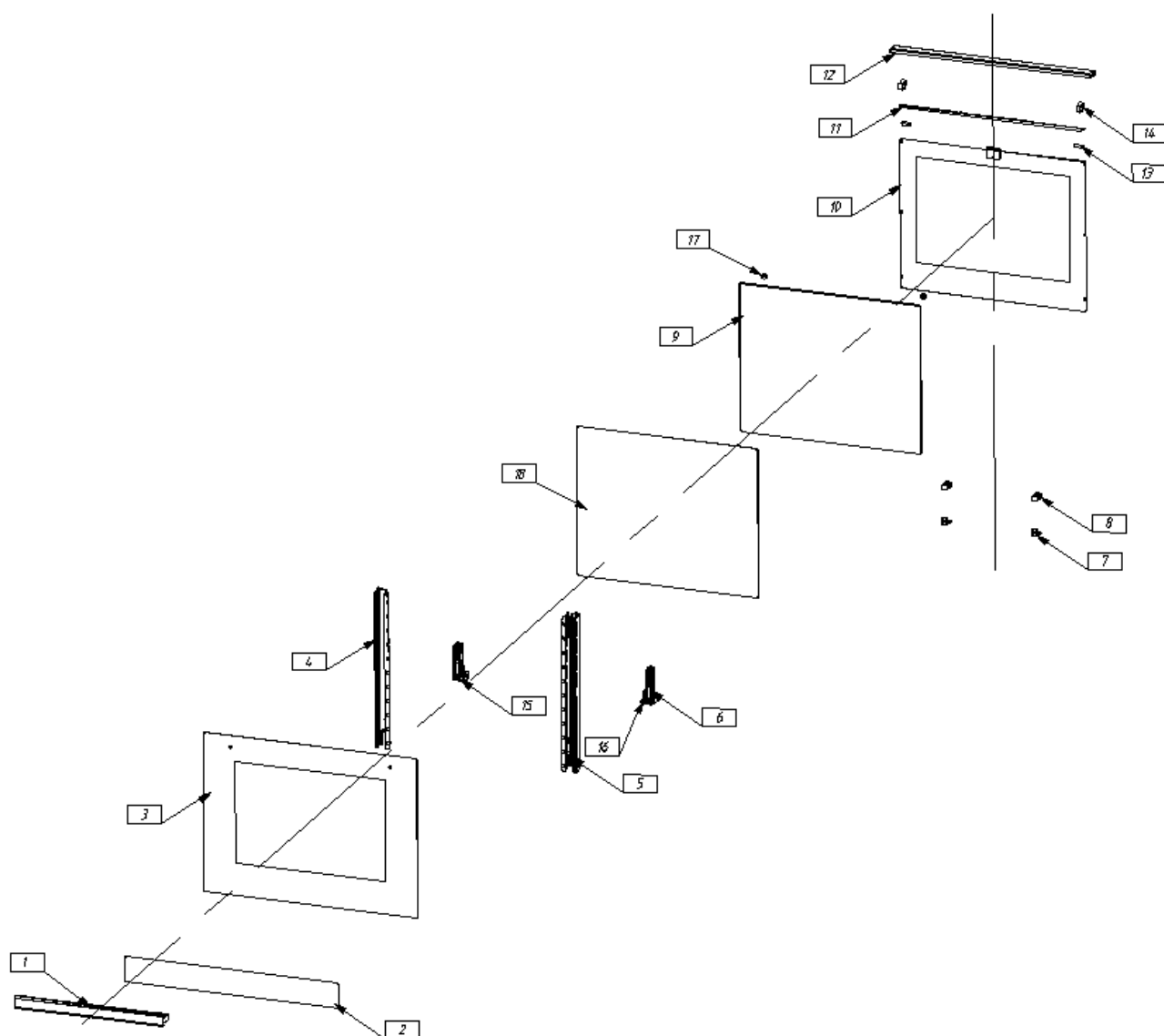
11. Product breakdown diagram

11.1、Cooktop +control panel



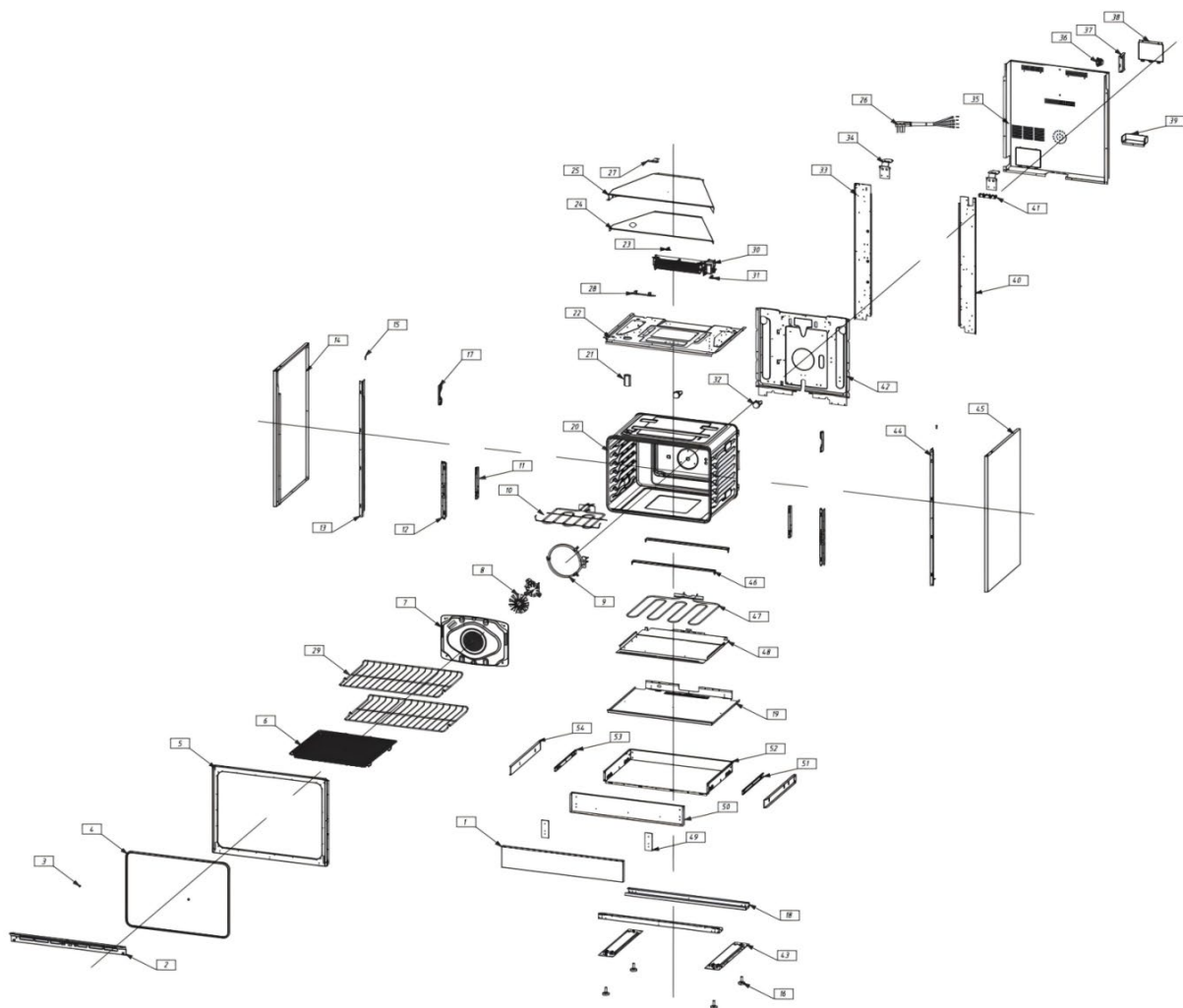
- | | | |
|----------------------|-----------------------------------|----------------------------------|
| 1、Knob | 9、Encoder switch | 17、Electromagnetic module |
| 2、Waterproof mat | 10、Display board mounting bracket | 18. standing oven panel assembly |
| 3、Left fixed block | 11、Oven fixing plate | 19、Cooker glass panel |
| 4、Right fixed block | 12、Display board mounting bracket | 20、Backsplash |
| 5、Switch panel | 13、Display board | 21、Electromagnetic module |
| 6、Insertion strip | 14、Exhaust pipe lower plate | 22、Exhaust pipe upper plate |
| 7、Switch panel glass | 15、Exhaust pipe upper plate | 23、Exhaust pipe lower plate |
| 8、Timer | 16、Chassis | 24、Adapter board assembly |

11.2 Door assembly



- | | | |
|------------------------------------|------------------------------|-------------------------------|
| 1、 Handle | 7、 Middle glass limit block | 13、 Middle glass strip |
| 2、 Decorative strip for large oven | 8、 Middle glass fixing block | 14、 Middle glass fixing block |
| 3、 door panel glass | 9、 middle glass | 15、 inner glass fixing block |
| 4、 frame left brackets | 10、 inner glass | 16、 inner glass fixing block |
| 5、 frame right brackets | 11、 Oven fixing plate | 17、 handle grommet |
| | 12、 Door bracket | 18、 middle glass |

11.3 Oven



1	Storage panel	29	shelf
2	Oven baffle	30	Cooling fan group
3	Oven auxiliary plastic parts	31	Cooling thermostat
4	Door seal strip	32	Round lamp assembly
5	Liner panel	33	Inner bladder left and right support
6	shelf	34	Oven holder
7	Back electric heat pipe baffle	35	Housing rear panel
8	Circulating fan group	36	Oven holder
9	Electric heating tube	37	Oven plate
10	Electric heating tube	38	Cover plate
11	Hinged plate	39	Oven damper
12	Hinged plate	40	Inner bladder left and right support
13	Housing brackets	41	Cooker junction box
14	Standing oven side panel assembly	42	Post-liner support
15	Non-standard screw	43	Oven stand
16	Non-slip foot	44	Housing brackets
17	Oven plate	45	Standing oven side panel assembly
18	Oven connecting plate	46	Oven baffle
19	Inner bin damper	47	Electric heating tube
20	Standing oven liner assembly	48	Bottom electric heat pipe fixing plate
21	Exhaust duct	49	Oven plate
22	Flue bottom plate	50	Storage room liner
23	Overheat protector	51	rail
24	Exhaust cover plate	52	Storage room bottom plate
25	Exhaust cover plate	53	rail
26	Power cord	54	Oven plate
27	Oven plate		
28	Oven plate		