

Al's World

2025 Calendar



Al's World is a tribute to Albert "Al" Brigance. It is inspired by special educators like you and the important work you do every day. We hope Al's World gives you a smile or two!

When Al Brigance began his career as a school psychologist in the '70s, assessment tools provided data that showed only what a student *didn't* know and *couldn't* do. Al envisioned a unique way to assess exceptional students—one that would highlight what a student does know and can do. Based on this fundamental idea, Al began work on the Basic Skills Inventory—the first BRIGANCE inventory to measure a student's mastery of a specific set of skills. Since then, thousands of special educators nationwide have trusted the BRIGANCE tools to help them learn about their students' individual strengths and needs, plan appropriate instruction, and monitor progress.

At Curriculum Associates, we proudly continue this BRIGANCE legacy with our current line of BRIGANCE assessment tools and instructional resources.



Sign up to get an Al's World cartoon in your inbox each month:
BRIGANCE.com/Als-World

Meet the BRIGANCE Staff!



Judy, Special
Educator Extraordinaire



Al, Judy's Class
Support Dog



Suzi, Administrator



Doug, Guidance Counselor



Emelia, Speech Pathologist



Stephanie, Transition
Coordinator

2025

January

S	M	T	W	T	F	S
			1	2	3	4
5	6	7	8	9	10	11
12	13	14	15	16	17	18
19	20	21	22	23	24	25
26	27	28	29	30	31	

February

S	M	T	W	T	F	S
						1
2	3	4	5	6	7	8
9	10	11	12	13	14	15
16	17	18	19	20	21	22
23	24	25	26	27	28	

March

S	M	T	W	T	F	S
						1
2	3	4	5	6	7	8
9	10	11	12	13	14	15
16	17	18	19	20	21	22
23	24	25	26	27	28	29
30	31					

April

S	M	T	W	T	F	S
		1	2	3	4	5
6	7	8	9	10	11	12
13	14	15	16	17	18	19
20	21	22	23	24	25	26
27	28	29	30			

May

S	M	T	W	T	F	S
				1	2	3
4	5	6	7	8	9	10
11	12	13	14	15	16	17
18	19	20	21	22	23	24
25	26	27	28	29	30	31

June

S	M	T	W	T	F	S
1	2	3	4	5	6	7
8	9	10	11	12	13	14
15	16	17	18	19	20	21
22	23	24	25	26	27	28
29	30					

July

S	M	T	W	T	F	S
		1	2	3	4	5
6	7	8	9	10	11	12
13	14	15	16	17	18	19
20	21	22	23	24	25	26
27	28	29	30	31		

August

S	M	T	W	T	F	S
					1	2
3	4	5	6	7	8	9
10	11	12	13	14	15	16
17	18	19	20	21	22	23
24/31	25	26	27	28	29	30

September

S	M	T	W	T	F	S
	1	2	3	4	5	6
7	8	9	10	11	12	13
14	15	16	17	18	19	20
21	22	23	24	25	26	27
28	29	30				

October

S	M	T	W	T	F	S
			1	2	3	4
5	6	7	8	9	10	11
12	13	14	15	16	17	18
19	20	21	22	23	24	25
26	27	28	29	30	31	

November

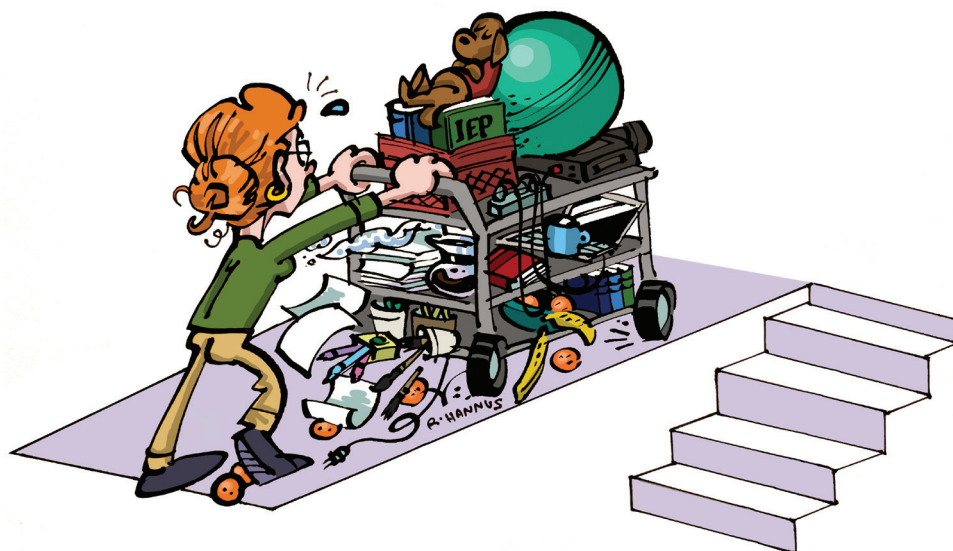
S	M	T	W	T	F	S
						1
2	3	4	5	6	7	8
9	10	11	12	13	14	15
16	17	18	19	20	21	22
23/30	24	25	26	27	28	29

December

S	M	T	W	T	F	S
	1	2	3	4	5	6
7	8	9	10	11	12	13
14	15	16	17	18	19	20
21	22	23	24	25	26	27
28	29	30	31			



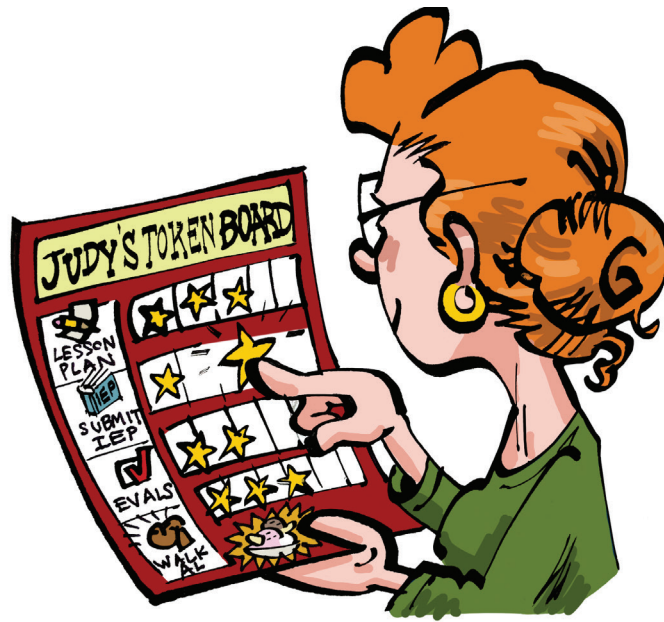
Flip the page to see January 2025!



Al likes to ride in style.




January 2025

Sunday	Monday	Tuesday	Wednesday	Thursday	Friday	Saturday
29	30	31	New Year's Day 1	2	3	4
5	6	7	8	9	10	11
12	13	14	15	16	17	18
19	Martin Luther King, Jr. Day 20	21	22	23	24	25
26	27	28	29	30	31	1



Judy is an expert at incentivizing herself.

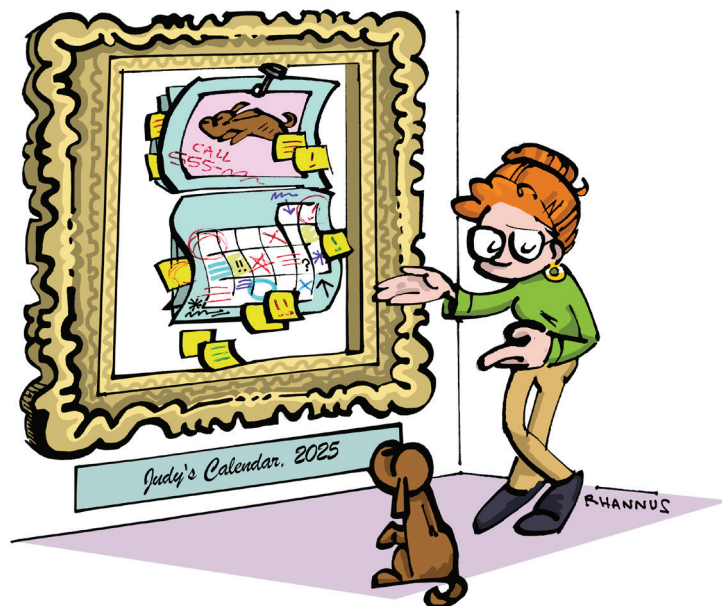
February 2025

Sunday	Monday	Tuesday	Wednesday	Thursday	Friday	Saturday
26	27	28	29	30	31	1
Groundhog Day 2 	3	4	5	6	7	8
9	10	11	12	13	Valentine's Day 14 	15
16	Presidents' Day 	17	18	19	20	21
23	24	25	26	27	28	1

NASP Convention—Seattle, WA

March 2025

Sunday	Monday	Tuesday	Wednesday	Thursday	Friday	Saturday
23	24	25	26	27	28	Ramadan Begins 1
2	3	4	5	6	7	8
Daylight Saving Time Begins 9	10	11	12	13	14	15
			CEC Convention & Expo—Baltimore, MD			
16	St. Patrick's Day 17 	18	19	First Day of Spring 20 	21	22
23	24	25	26	27	28	29
Eid al-Fitr 30	31					



Judy knew her calendar would be displayed in a museum someday.




April 2025

Sunday	Monday	Tuesday	Wednesday	Thursday	Friday	Saturday
30	31	April Fool's Day 1 	2	3	4	5
6	7	8	9	10	11	Passover Begins 12
13	14	15	16	17	18	19
Easter 20	21	Earth Day 22 	23	24	25	26
27	28	29	30	1	2	3



A simple "thank you" goes a long way.

May 2025

Sunday	Monday	Tuesday	Wednesday	Thursday	Friday	Saturday
27	28	29	30	1	2	3
4	Cinco de Mayo	5	Teacher Appreciation Day	6	7	8
			Teacher Appreciation Week			
Mother's Day	11	12	13	14	15	16
						
18	19	20	21	22	23	24
25	Memorial Day	26	27	28	29	30
						



Sometimes it's best to accept reality.

June 2025

Sunday	Monday	Tuesday	Wednesday	Thursday	Friday	Saturday
1	2	3	4	5	6	7
8	9	10	11	12	13	14 Flag Day 
15 Father's Day 	16	17	18	19 Juneteenth 	20	21 First Day of Summer 
22	23	24	25	26	27	28
29	30	1	2	3	4	5



For once, Judy has just one concern: SPF.

July 2025

Sunday	Monday	Tuesday	Wednesday	Thursday	Friday	Saturday
29	30	1	2	3	Independence Day 4 	5
6	7	8	9	10	11	12
13	14	15	16	17	18	19
20	21	22	23	24	25	26
27	28	29	30	31	1	2



No challenge too large, no victory too small.

August 2025

Sunday	Monday	Tuesday	Wednesday	Thursday	Friday	Saturday
27	28	29	30	31	1	2
3	4	5	6	7	8	9
10	11	12	13	14	15	16
17	18	19	20	21	22	23
24	25	26	27	28	29	30
31						



Inclusive spaces, brighter faces!

September 2025

Sunday	Monday	Tuesday	Wednesday	Thursday	Friday	Saturday
31	Labor Day 1 	2	3	4	5	6
7	8	9	10	11	12	13
14	15	16	17	18	19	20
21	First Day of Fall 22 	Rosh Hashanah Begins 23	24	25	26	27
28	29	30	1	2	3	4



Judy takes her cues from the class chameleon, adapting to each student's needs.

October 2025

Sunday	Monday	Tuesday	Wednesday	Thursday	Friday	Saturday
28	29	30	Yom Kippur Begins 1	2	3	4
5	6	7	8	9	10	11
12	13	14	15	16	17	18
19	20	21	22	23	24	25
26	27	28	29	30	Halloween 31	1





On family night, Judy serves up a piping hot bowl of alphabet soup.

November 2025

Sunday	Monday	Tuesday	Wednesday	Thursday	Friday	Saturday
26	27	28	29	30	31	1
Daylight Saving Time Ends 2	3	Election Day 4	5	6	7	8
			CASE Conference—Oklahoma City, OK			
9	10	Veterans Day 11	12	13	14	15
16	17	18	19	20	21	22
23	24	25	26	Thanksgiving 27	28	29
30						



Not to worry! Judy knows exactly what to do.

December 2025

Sunday	Monday	Tuesday	Wednesday	Thursday	Friday	Saturday
30	1	2	3	4	5	6
7	8	9	10	11	12	13
Hanukkah Begins 14	15	16	17	18	19	20
First Day of Winter 21 	22	23	Christmas Eve 24	Christmas Day 25	Kwanzaa Begins 26	27
28	29	30	New Year's Eve 31 	1	2	3

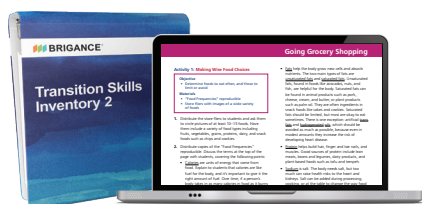
Address the Needs of Each Special Education Student

BRIGANCE has been trusted by special educators since 1976 to help address a broad range of student needs—from early developmental skills assessment to transition planning support. The BRIGANCE Special Education family of products reflects Individuals with Disabilities Education Act requirements as well as state standards. And from the publisher of BRIGANCE, *i-Ready*® combines a valid and reliable adaptive assessment with explicit, scaffolded personalized instruction. BRIGANCE and *i-Ready* together: all you need to meet legislative mandates and serve your students in the best way possible.



Inventory of Early Development III

Assess specific strengths and needs and inform instruction in key developmental domains: physical development, language development, academic skills/cognitive development, daily living skills, and social-emotional development.



Transition Skills Inventory 2 (TSI 2) and Transition Skills Activities 2 (TSA 2)

Support each student in determining their own path after high school, assess progress toward transition goals in the skill areas identified by IDEA Indicator 13, and deliver instruction with a digital resource of more than 100 instructional activities. Together, the new TSI 2 and the TSA 2 provide a comprehensive set of tools to meet the needs of diverse learners as they develop skills to thrive as adults in their personal lives, workplaces, and communities.



i-Ready

Support every student with one coherent assessment program in mathematics and reading, designed to deliver clear data, connected to precise instruction, and backed by committed service.

