

GUIDANCE Digital Comprehension Checks

Comprehension Checks are digital assessments that provide insight into what students understood from a lesson or unit and where they might need additional support. They are available in English and Spanish, with audio support for all grades. This guide walks you through how to use them, when to assign them, and how to access Comprehension Check data to support future instruction.

Comprehension Checks Overview

Purpose:

Assess student understanding at the pace of your core mathematics instruction.

When to Use:

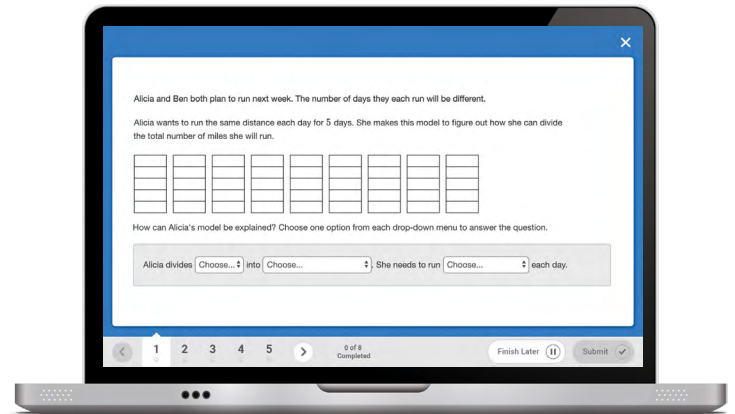
After teaching a lesson or unit

How to Use:

- Assign precreated forms or build your own.
- Assign to the whole class or to individual students.

Customization Options:

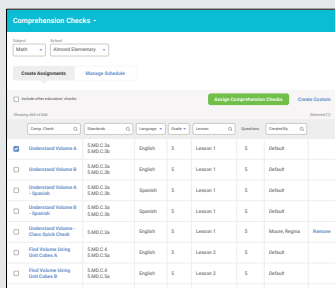
Questions can be removed or added from other tests to meet specific goals.*



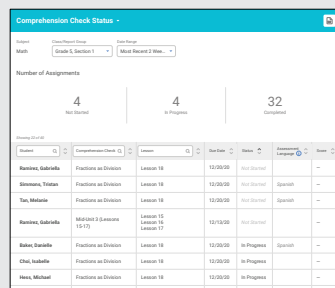
Note: Comprehension Checks are aligned in content, standards, and complexity to the print Lesson Quizzes and Unit Assessments in Teacher Toolbox. You should use either the print assessments or digital Comprehension Checks—not both.

Assigning Comprehension Checks and Reviewing Reports

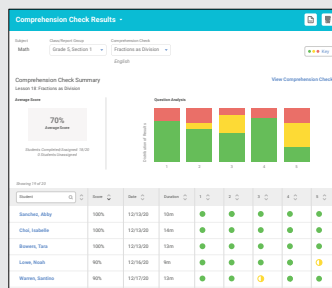
Start by learning how to assign and customize Comprehension Checks to support your instructional goals. Then explore the three report types—Status, Class, and Student—to monitor completion and analyze student understanding.



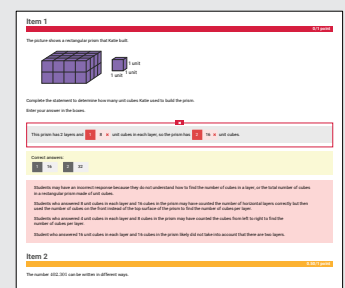
**Assigning
Comprehension Checks**
[p. 2-3](#)



**Comprehension Check
Status**
[p. 4](#)



**Comprehension Check
Results (Class)**
[p. 5](#)



**Comprehension Check
Results (Student)**
[p. 6](#)

*Available in English Only



Accessing Comprehension Check Creation and Assignment Features

1. Select **Assess & Teach** from the top navigation.
2. Select **Assessment** for the category.
3. Select **Math** under *Comprehension Checks*. The *Create Assignments* screen will display by default.

Assigning an Existing Comprehension Check

Follow Steps 1–3 under *Accessing Comprehension Check Creation and Assignment Features*.

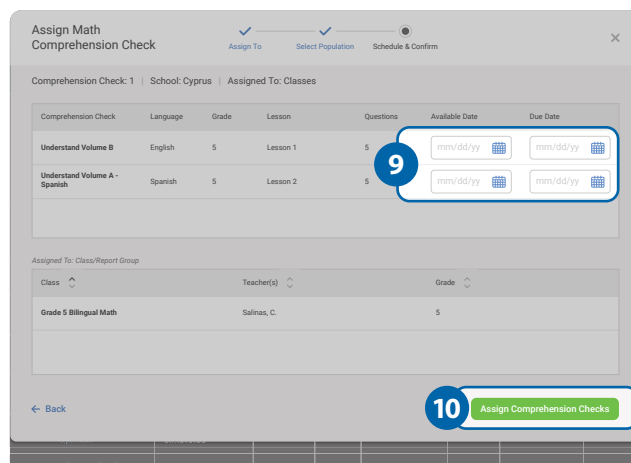
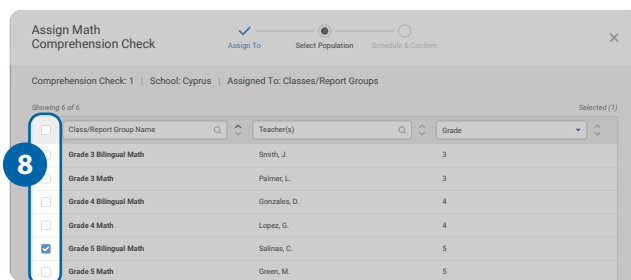
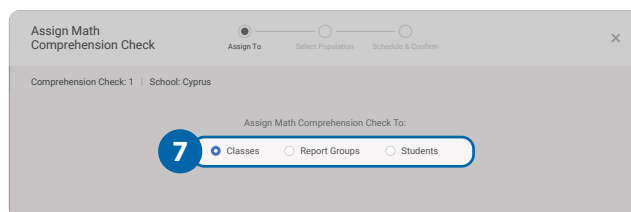
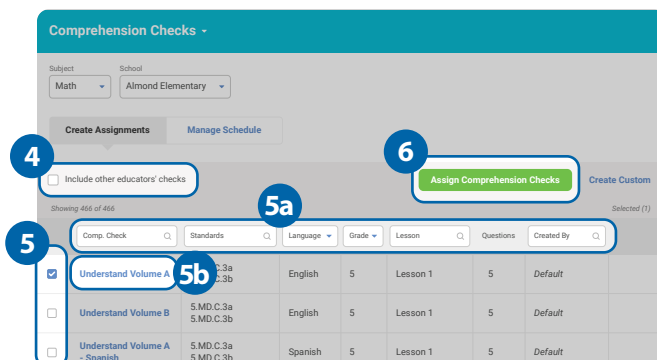
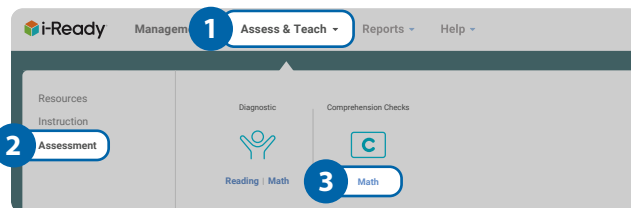
4. Indicate whether you would like to *Include other educators' checks* in the Create Assignments table. If you do not check this box, you will only see precreated Comprehension Checks offered by default in the system and custom Comprehension Checks that you have created.

5. Use the **checkboxes** to select *Comprehension Check(s)* you would like to assign (maximum of 10 at one time). If needed, you may also do the following from this screen:
 - a. Filter by *Comprehension Check* title, *Standards* addressed, *Language*, *Grade*, and/or *Lesson*.
 - b. Click on the Comprehension Check **title** to view details or preview the assessment.

6. Click **Assign Comprehension Checks**. The corresponding pop-up will appear.

! *Make sure to click the arrow after each step to move forward!*

7. Choose **Classes**, **Report Groups**, or **Students**.
8. Use the **checkboxes** to select your *population*.
9. Enter the **Available Date** for each Comprehension Check to be accessible to students and a **Due Date** for student completion of each Check.
10. Confirm that the information listed on the screen is correct, and click **Assign Comprehension Checks**.



Creating a Custom Comprehension Check*

Follow Steps 1–3 under *Accessing Comprehension Check Creation and Assignment Features*.

4. Select **Create Custom**.

! *Make sure to click the arrow after each step to move forward!*

5. Select the **Lesson Grade** you want to assess from the dropdown.
6. Use the **checkboxes** to select the *lesson(s)* to include in your custom Comprehension Check. If needed, you may also do the following from this screen:
 - a. Filter by Lesson, Unit, or Standards.
 - b. Change the test Form using the dropdown. Form A is the default. *Note: Questions from Form A and Form B cannot be combined in a single Comprehension Check.*
 - c. Preview the assessment.
7. All questions are selected by default. Use the **checkboxes** to deselect questions to remove from the Comprehension Check. You can also preview and interact with each question by clicking on the **Question number**.
8. Enter the **Check Name** and **Test Description**. Be sure to use a name you will remember and recognize on the *Create Assignments* table when you need to assign this Check.
9. Click **Preview** to preview the full Comprehension Check you have created.
10. Review your selections and click **Save & Close** to save this Check and assign it to students at a later time. Each assessment will then be able to be assigned independently.

Removing a Custom Comprehension Check

Follow Steps 1–3 under *Accessing Comprehension Check Creation and Assignment Features*.

4. Remove a custom Comprehension Check from the system entirely by selecting **Remove**. You will be prompted to confirm that you want to remove the assessment. Once removed, the Check cannot be retrieved or assigned again. However, it will be available for reporting if it was previously assigned to students.

*Available in English Only



REFERENCE SHEET

Comprehension Check Status

The Comprehension Check Status report shows you the completion progress for all students on an assigned Comprehension Check.

Use For:

- Determining which students have completed assigned Comprehension Checks
- Identifying which students are in the process of completing one or more assigned Comprehension Checks

When:

- After you have assigned a Comprehension Check

- Navigation:** Use these dropdowns to navigate to a different Class/Report Group to view the Comprehension Checks assigned during a different time frame.
- Number of Assignments Summary:** Provides an overview of how many assignments are not yet started, in progress, or completed for the selected time frame
- Student Name:** A row is listed for each Comprehension Check assigned to each student. More than one Comprehension Check may be listed if the student has multiple assigned.
- Comprehension Check:** Indicates the Comprehension Check assigned to that student for the selected time frame
- Lesson:** Indicates the lesson associated with each Comprehension Check
- Due Date:** Indicates when the Comprehension Check is due
- Status:** Students may fall into three possible categories:
 - **Not Started:** Has not started on the assigned Comprehension Check
 - **In Progress:** Has completed some of the Comprehension Check
 - **Completed:** Has completed the Comprehension Check
- Assessment Language:** Indicates the language of the Comprehension Check. A blank cell indicates the Comprehension Check was assigned in English.
- Completed:** Students who have completed their Comprehension Check show the date completed and their assessment score. Select a student name to view the Comprehension Check Results (Student) report to see how that student answered each question on the Comprehension Check and response analysis for any partially correct or incorrect questions.

Comprehension Check Status

1

Subject

Math

Class/Report Group

Grade 5, Section 1

Date Range

Most Recent 2 Wee...

2

Number of Assignments

4

Not Started

4

In Progress

32

Completed

Showing 20

3

Student

4

Comprehension Check

5

Lesson

6

Due Date

7

Status

8

Assessment Language

Score

Ramirez, Gabriella	Fractions as Division	Lesson 18	12/20/20	Not Started		—
Simmons, Tristan	Fractions as Division	Lesson 18	12/20/20	Not Started	Spanish	—
Tan, Melanie	Fractions as Division	Lesson 18	12/20/20	Not Started	Spanish	—
Ramirez, Gabriella	Mid-Unit 3 (Lessons 15-17)	Lesson 15 Lesson 16 Lesson 17	12/13/20	Not Started		—
Baker, Danielle	Fractions as Division	Lesson 18	12/20/20	In Progress	Spanish	—
Choi, Isabelle	Fractions as Division	Lesson 18	12/20/20	In Progress		—
Hess, Michael	Fractions as Division	Lesson 18	12/20/20	In Progress		—
Ruiz, Justin	Mid-Unit 3 (Lessons 15-17)	Lesson 15 Lesson 16 Lesson 17	12/13/20	In Progress		—
Malone, Carla	Fractions as Division	Lesson 18	12/20/20	Completed 12/18/19		100%
Warren, Santino	Fractions as Division	Lesson 18	12/20/20	Completed 12/17/19		80%
Bowers, Tara	Fractions as Division	Lesson 18	12/20/20	Completed 12/16/19		70%
Cochran, Damon	Fractions as Division	Lesson 18	12/20/20	Completed 12/16/19		90%
Lowe, Noah	Fractions as Division	Lesson 18	12/20/20	Completed 12/16/19		30%
Ruiz, Justin	Fractions as Division	Lesson 18	12/20/20	Completed 12/16/19		40%
Singh, Brian	Fractions as Division	Lesson 18	12/20/20	Completed 12/16/19		90%
McDonald, Kal	Fractions as Division	Lesson 18	12/20/20	Completed 12/16/19		60%



REFERENCE SHEET

Comprehension Checks Results (Class)

The Comprehension Check Results (Class) report helps you monitor class results for a lesson- or unit-level Comprehension Check. This report shows students' understanding of concepts and skills covered in a lesson or unit.

Use For:

- Monitoring student understanding of concepts and skills
- Determining grouping options for reteaching and targeted instruction
- Identifying common misconceptions and errors as well as shared strengths in students' understanding

When:

- After students have completed an assigned Comprehension Check

1. **Navigation:** Use these dropdowns to quickly navigate to a different Class/Report Group or Comprehension Check.

2. **Comprehension Check Summary:**

Indicates the class average score on the Comprehension Check, along with how many students completed the assessment out of the number assigned

3. **Question Analysis:** Provides a visual overview of how students performed on each question. This can help you determine which question students struggled with the most and may need additional targeted instruction for. Hover over a bar to see the total number of students who answered the question correct (i.e., green), partially correct (i.e., yellow), or incorrect (i.e., red).

4. **View Comprehension Check:** Select to see the questions on this Comprehension Check.

5. **Search by Student:** Type the student name into the search field to narrow results.

6. **Student Name:** Select a student name to view the Comprehension Check Results (Student) report to see how that student answered each question on the Comprehension Check and response analysis for any partially correct or incorrect questions. Students who have not yet completed the Comprehension Check will appear at the bottom of the list.

7. **Score:** Indicates the % score for each student

8. **Date:** Indicates when the student completed the Comprehension Check

9. **Duration:** Indicates how long a student took to complete the Comprehension Check

10. **Questions:** Provides an analysis of correct (i.e., green), partially correct (i.e., yellow), and incorrect (i.e., red) answers for each question.



Understanding Comprehension Check Results Report Color Coding

- Green** = Correct Response
- Yellow** = Partially Correct Response
- Red** = Incorrect Response

For questions that have multiple components, partial credit is awarded when at least one component of a question is correct.



REFERENCE SHEET

Comprehension Check Results (Student)

The Comprehension Check Results (Student) report indicates how an individual student answered each question on the Comprehension Check and provides a response analysis for any partially correct or incorrect questions.

Use For:

- Monitoring student understanding of concepts and skills for the lesson- or unit-level Comprehension Check

When:

- After students have completed an assigned Comprehension Check

1. Comprehension Check Information:

Provides the subject, student information, assessment language, and which lesson or unit corresponds to the Comprehension Check

2. **Item Score:** Indicates the score for the student response to each item. The color-coding system lets you easily identify incorrect responses (i.e., red), partially correct responses (i.e., yellow), and correct responses (i.e., green). For questions that have multiple components, partial credit is awarded when at least one component of a question is correct.

3. **Item:** Each question from the Comprehension Check is displayed.

4. **Student Response:** Indicates the answer provided by the student

5. **Correct Answer:** If the student's response was partially correct or incorrect, the correct answer to the question is displayed.

6. **Response Analysis:** If the student's response was partially correct or incorrect, a response analysis is provided to outline the rationale for typical incorrect responses. No response analysis is provided if the student answered correctly.

Comprehension Check Results

1

Subject	Math
Student	Elijah Powell
Student ID	powell_elijah
Student Grade	5
Comprehension Check	Fractions as Division
Assessment Language	English
Score	70%
Date	12/11/20

2

0/1 point

3

The picture shows a rectangular prism that Katie built.

Complete the statement to determine how many unit cubes Katie used to build the prism.

Enter your answer in the boxes.

This prism has 2 layers and 1 8 × unit cubes in each layer, so the prism has 2 16 × unit cubes.

Correct answers:

1 16 2 32

Students may have an incorrect response because they do not understand how to find the number of cubes in a layer, or the total number of cubes in a rectangular prism made of unit cubes.

Students who answered 8 unit cubes in each layer and 16 cubes in the prism may have counted the number of horizontal layers correctly but then used the number of cubes on the front instead of the top surface of the prism to find the number of cubes per layer.

Students who answered 4 unit cubes in each layer and 8 cubes in the prism may have counted the cubes from left to right to find the number of cubes per layer.

Students who answered 16 unit cubes in each layer and 16 cubes in the prism likely did not take into account that there are two layers.

4

0.50/1 point

5

The number 402.301 can be written in different ways.

Drag a number into each box to complete the expanded form of 402.301.

402.301 = 4 × 1 100 ✓ + 2 × 2 10 × + 3 × 3 1/10 ✓ + 1 × 4 1/100 ×

10 100 1/100 1/10 1 1/1000 1,000

Correct answers:

1 100 2 1 3 1/10 4 1/1000



Understanding Comprehension Check Results Report Color Coding

- **Green** = Correct Response
- **Yellow** = Partially Correct Response*
- **Red** = Incorrect Response

*For questions that have multiple components, partial credit is awarded when at least one component of a question is correct.