



# ILEARN Checkpoints and *i-Ready*: Why Both Matter



## Children Are Unique and So Are Their Learning Paths

For a student to experience success in the classroom, teachers need to understand their strengths and weaknesses—especially when students are below or above their grade level. Direction of learning is more important than the speed of learning, which is why almost one-third of Indiana districts use *i-Ready*.

For nearly a decade, Indiana educators have been using *i-Ready* to understand each student's unique learning needs. *i-Ready* consists of three parts: an adaptive Diagnostic, customized lessons, and a blueprint for teachers to impact learning. The *i-Ready Diagnostic* is a teaching tool that gives educators insight into every student they teach, regardless of whether a student is facing challenges or is ahead for their grade. *i-Ready Personalized Instruction*, in turn, connects that information to a customized learning plan that reflects each student's next steps.

## Looking Back versus Looking Ahead: Different Assessments Measure Different Things

Many of us can remember taking big, end-of-year state tests that measured what we learned for the entire year. The *i-Ready Diagnostic* is not like those tests!

Rather, *i-Ready* is a forward-looking instructional tool. It doesn't assign a grade or measure nor determine accountability. It tells educators, students, and their families what students already know and what they need to learn next to keep growing and learning.

Different assessments do different things and serve different purposes. The ILEARN Checkpoints are an assessment of instruction (i.e., what has a student learned relative to grade-level learning), while *i-Ready* provides assessments for instruction (i.e., what a student needs to grow).

*"Without [i-Ready] data, it would be impossible to effectively plan lessons and be able to teach my students each day. Each of my students arrive in my classroom with different needs and abilities, so it is my responsibility to find out what they know, what they need, and how to help them be successful and SHINE (Success Happens in Everyone) in all they do."*

— Grade 3 Teacher and 2022  
Extraordinary Educator

*ILEARN Checkpoints*  
ARE AN ASSESSMENT *of* LEARNING.

*i-Ready* IS A TEACHER'S TOOL.  
IT'S AN ASSESSMENT *for* LEARNING.

## Addressing Over-Testing: Will Using *i-Ready* and ILEARN Checkpoints Lead to Too Much Testing?

Assessments of student learning like ILEARN Checkpoints are like taking your child's temperature, while *i-Ready* is more like a doctor's diagnosis and prescription. A thermometer will let you know if your child is running a fever but doesn't tell you how to help them feel better. Taking your child to the pediatrician to get an exact diagnosis of their condition and a prescription is what gets them healthy again. The ILEARN Checkpoints and *i-Ready* work in very similar ways.

Just as using a thermometer and doctor's appointment won't lead to "over-care," using *i-Ready* with ILEARN Checkpoints won't lead to "over-testing" or take away from precious instruction time.

In fact, *i-Ready* helps teachers save time by making the most of every classroom minute because it:

- Tells them exactly what students need
- Sheds a light on whether the way they're teaching is effective or if they need to change it up
- Gives them resources aligned to the Indiana Academic Standards (IAS), which means they don't need to use planning time to hunt down resources online
- Leaves decision making in their hands because they know their students and there isn't a program in the world that could do the important work they do

*"It is critical to analyze my students' performance on i-Ready lessons, Diagnostic measures, Growth Monitoring, and Standards Mastery to make instructional decisions and groupings in my classroom. I use the Teacher Toolbox and Tools for Instruction resources for interventions, and I implement goal setting paired with a data wall to track our individual and team goals for our i-Ready and Standards Mastery each week and throughout the year."*

—Grade 3 Teacher and 2021  
Extraordinary Educator



**MORE THAN 12 million STUDENTS ACROSS  
THE NATION RELY ON THE *i-READY* DIAGNOSTIC AND ITS  
DATA TO HELP DRIVE INSTRUCTION.**

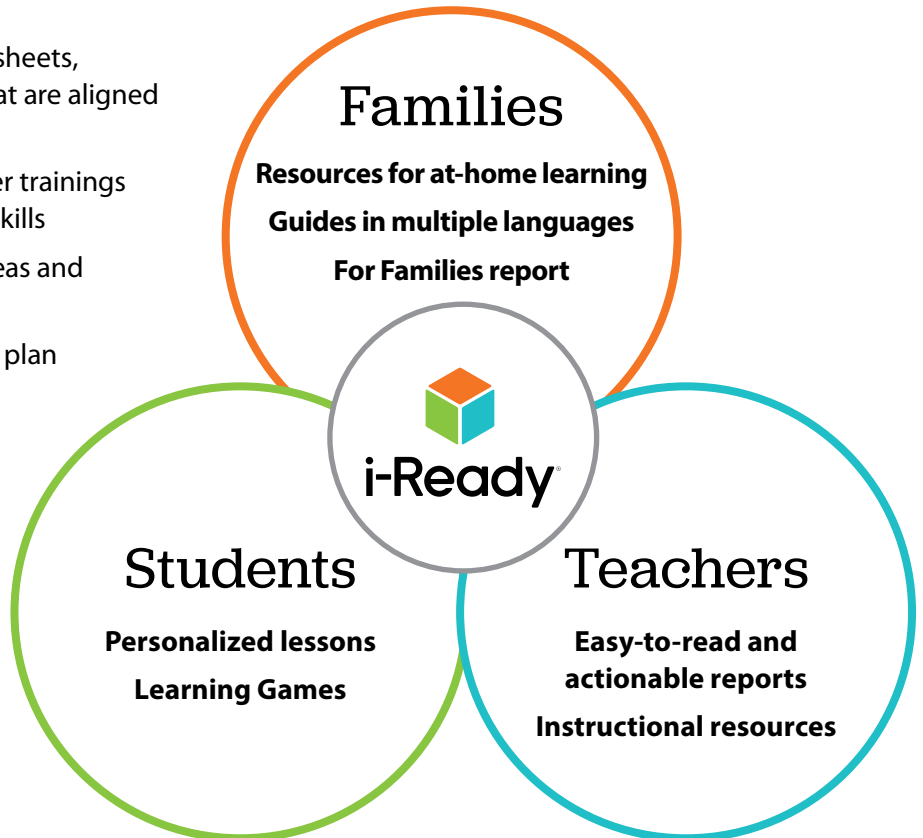
# How Does *i-Ready* Help Teachers and Students?

Time has never been more precious to teachers, which is why an assessment program like ILEARN Checkpoints isn't enough on its own.

*i-Ready* is much more than a classroom assessment. It's part of an ecosystem of resources, training, and support that's been designed to give educators what they need to help each student reach their full potential.

With *i-Ready*, teachers have access to:

- A library of instructional resources, worksheets, homework assignments, quizzes, etc., that are aligned to IAS Standards
- Professional learning, webinars, and other trainings that help them continuously build their skills
- A community of educators who share ideas and celebrate one another
- Tools to help teachers communicate and plan with families
- Resources for families who want to help students learn at home
- Easy-to-read reports that provide insight on student and class performance
- Support from *i-Ready Partners*, [an award-winning team](#) of dedicated professionals who are ready to answer questions when they arise, provide analysis of student data, and offer a host of other services



ONE-THIRD  
OF INDIANA DISTRICTS  
USE *i-READY*.

## How Will *i-Ready* Work with the New ILEARN Checkpoints?

Assessments of student learning like ILEARN Checkpoints are focused on determining if students know what they're supposed to know for their grade. While this information is important for ensuring accountability, it doesn't give teachers all the details they need to help every student reach their potential.

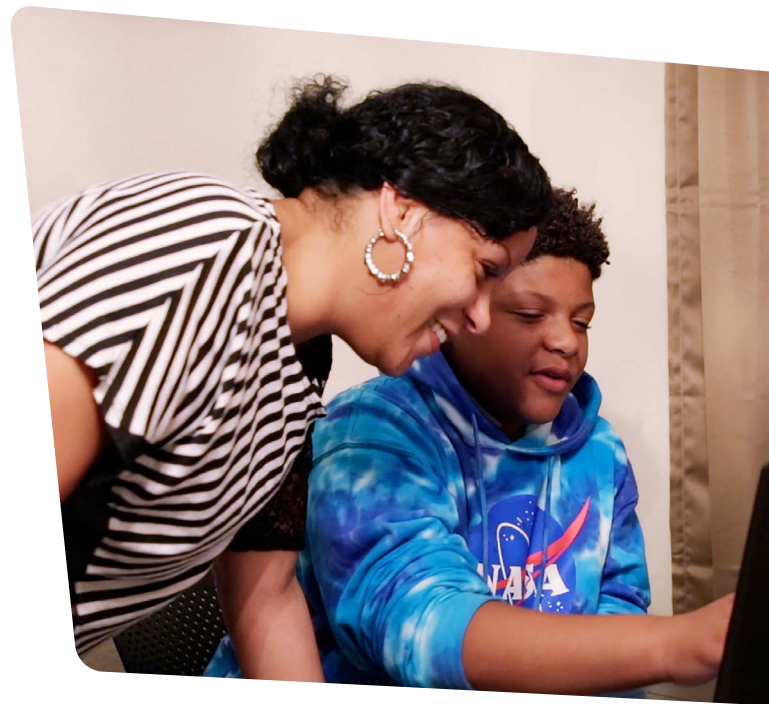
How is *i-Ready* different? The biggest difference that families should be aware of is that *i-Ready* assessments, unlike ILEARN Checkpoints, ask questions from grade levels that are below and above a student's chronological grade to determine what a student knows and identify what they're ready to learn next.

*i-Ready Diagnostic* data can tell teachers much more than if students are or are not meeting the IAS they should know for their grade. It delivers personalized profiles of exactly where students are and what they need to get to where they need to be.

## Conclusion

While some assessments look back and test students on what they should have learned, *i-Ready* looks forward by delivering insight into what students haven't learned yet. As an instructional tool, it saves teachers valuable planning time by giving them access to a vast library of resources, while also making it possible for them to create individual learning plans for every student in their classrooms.

Even during periods of change—like this moment when Indiana is transitioning to new state standards and new state accountability assessments—*i-Ready* will deliver the invaluable insight, engaging lessons and Learning Games, and support that have already helped so many Indiana students learn and grow.



To learn more about *i-Ready*, contact your local educational sales consultant:

Cory Howard | [CHoward@cainc.com](mailto:CHoward@cainc.com) | (574) 721-5306