



# Summer Learning Social Media Kit

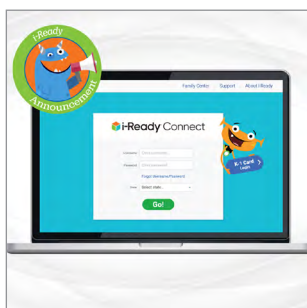
Families love knowing what their children are learning! To help keep your community updated about *i-Ready* throughout the summer, we've created posts you can share on your school's and/or district's social media accounts!

To access these posts, open the folder in the ZIP drive labeled as the "Folder Name" below. There you'll find the image file and text in English and Spanish (which you're welcome to edit) for your post. Please tag us so we can send virtual high fives!


[@CurriculumAssoc](#)

[@MyiReady](#)

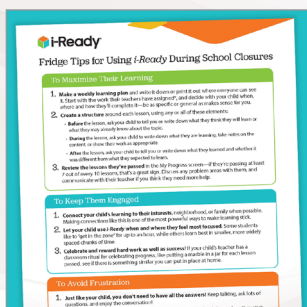
[Curriculum Associates](#)

[iReady](#)


Folder Name	Topic	Post
01_Intro	<i>i-Ready</i> Intro	Families: This summer we'll be using <i>i-Ready</i> to get to know your student and what they know and don't know, so we can help them on their learning path! Learn more about <i>i-Ready</i> here: <a href="https://i-Ready.com/Tour">i-Ready.com/Tour</a> .



02_Pre-Diagnostic	Pre-Diagnostic	Families: Your student will be taking the <i>i-Ready Diagnostic</i> to ensure we have the clearest picture of their current learning needs. You play a crucial role in supporting them. Learn how to help here: <a href="https://CurriculumAssociates.com/Distance-Learning/Family-Support">CurriculumAssociates.com/Distance-Learning/Family-Support</a> .
-------------------	----------------	---

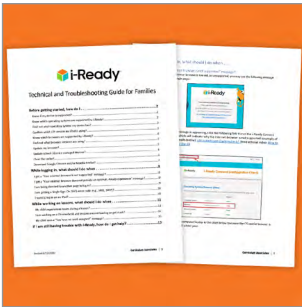


03_Checklist	Checklist	Families: Thank you for your partnership in your student's learning journey supported by <i>i-Ready</i> . It all begins with an initial assessment called the <i>i-Ready Diagnostic</i> ! Here's a short list of "to dos" to support this at home: <a href="https://CAPubStore.Blob.Core.Windows.net/AtHomePDFs/Fridge_Tips_English.pdf">CAPubStore.Blob.Core.Windows.net/AtHomePDFs/Fridge_Tips_English.pdf</a> .
--------------	-----------	--

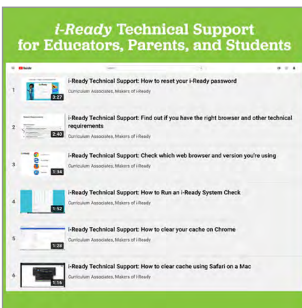
## Image Reference Guide, *Cont'd.*



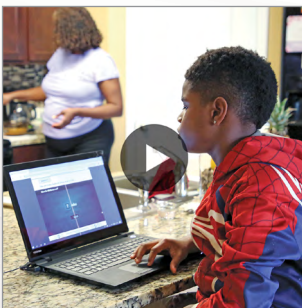
Folder Name	Topic	Post
04_Family Center	Family Center	Families: You play a critical role in your student's success with <i>i-Ready</i> this summer. Visit the Family Center for more information on <i>i-Ready</i> and how you can motivate your student at home: <a href="https://i-ReadyCentral.com/FamilyCenter">i-ReadyCentral.com/FamilyCenter</a> .



05_Technical Support	Technical Support	Families: We're here to help you. Need technical support for <i>i-Ready</i> ? Find answers to technical questions here: <a href="https://i-ReadyCentral.com/Download/?res=29827&amp;view_pdf=1">i-ReadyCentral.com/Download/?res=29827&amp;view_pdf=1</a> .
----------------------	-------------------	---



06_Technical Support	Technical Support	Families: We're here to help you. Need technical support for <i>i-Ready</i> ? View tutorials: <a href="https://YouTube.com/Playlist?list=PLdPYwoTYVh14cfDvo8szTVKqZ-Bmh58B">YouTube.com/Playlist?list=PLdPYwoTYVh14cfDvo8szTVKqZ-Bmh58B</a> .
----------------------	-------------------	---

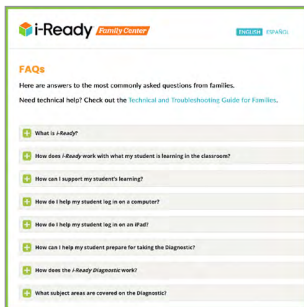


07_Video	Home Assessment Video	Families: The <i>i-Ready Diagnostic</i> is a different kind of test. Similar to an eye exam, it adapts to your student and helps your student's teacher understand and support their unique needs. Watch this video to learn how to help teachers get the information they need!  English: <a href="https://Share.Vidyard.com/Watch/q4eFqZF6x8NM3EfSz5ayBa">Share.Vidyard.com/Watch/q4eFqZF6x8NM3EfSz5ayBa</a>  Spanish: <a href="https://Share.Vidyard.com/Watch/FAjGt1ay2wjMQGfEgKDCwo">Share.Vidyard.com/Watch/FAjGt1ay2wjMQGfEgKDCwo</a>
----------	-----------------------	--

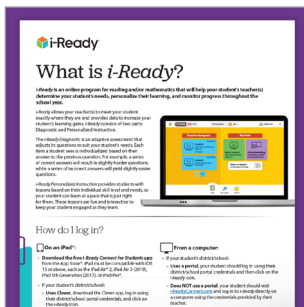
## Image Reference Guide, *Cont'd.*



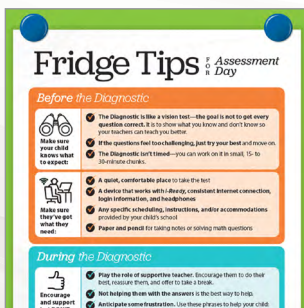
Folder Name	Topic	Post
08_What Is <i>i-Ready</i>	What Is <i>i-Ready</i> ?	Families: The <i>i-Ready Diagnostic</i> is not a “test,” but it’s meant to be taken like one. Students take it independently, and the results show their teachers what they already know and what they need. Learn more: <a href="https://i-ReadyCentral.com/FamilyCenter/What-Is-i-Ready">i-ReadyCentral.com/FamilyCenter/What-Is-i-Ready</a> .



09_FAQs	FAQs	Families: We’ll be using <i>i-Ready</i> to support your student’s learning this summer. We begin with the Diagnostic to get a complete picture of your student’s skills and ensure they receive instruction that fits their exact learning needs. Click here for FAQs about the program: <a href="https://i-ReadyCentral.com/FamilyCenter/FAQs">i-ReadyCentral.com/FamilyCenter/FAQs</a> .
---------	------	--



10_Support at Home	Support at Home	Families: We can’t wait to partner with you as we use <i>i-Ready</i> this summer to accelerate learning. Learn more about supporting your student at home with <i>i-Ready</i> : <a href="https://i-ReadyCentral.com/Download/?res=479&amp;view_pdf=1">i-ReadyCentral.com/Download/?res=479&amp;view_pdf=1</a> .
--------------------	-----------------	---



11_Test Day	Reminders for Test Day	Families: Want some quick reminders of what to say and do to help your student on the day they take the <i>i-Ready Diagnostic</i> ? Check out our Fridge Tips for Assessing at Home: <a href="https://i-ReadyCentral.com/Articles/Assessing-at-Home-Support">i-ReadyCentral.com/Articles/Assessing-at-Home-Support</a> .
-------------	------------------------	--