



i-Ready Diagnostic for Previous Istation[®] Users: A Crosswalk

A Transition Guide for Educators Who Are Moving from Using Istation's Indicators of Progress (ISIP) in Reading and Mathematics Assessments to the *i-Ready Diagnostic*

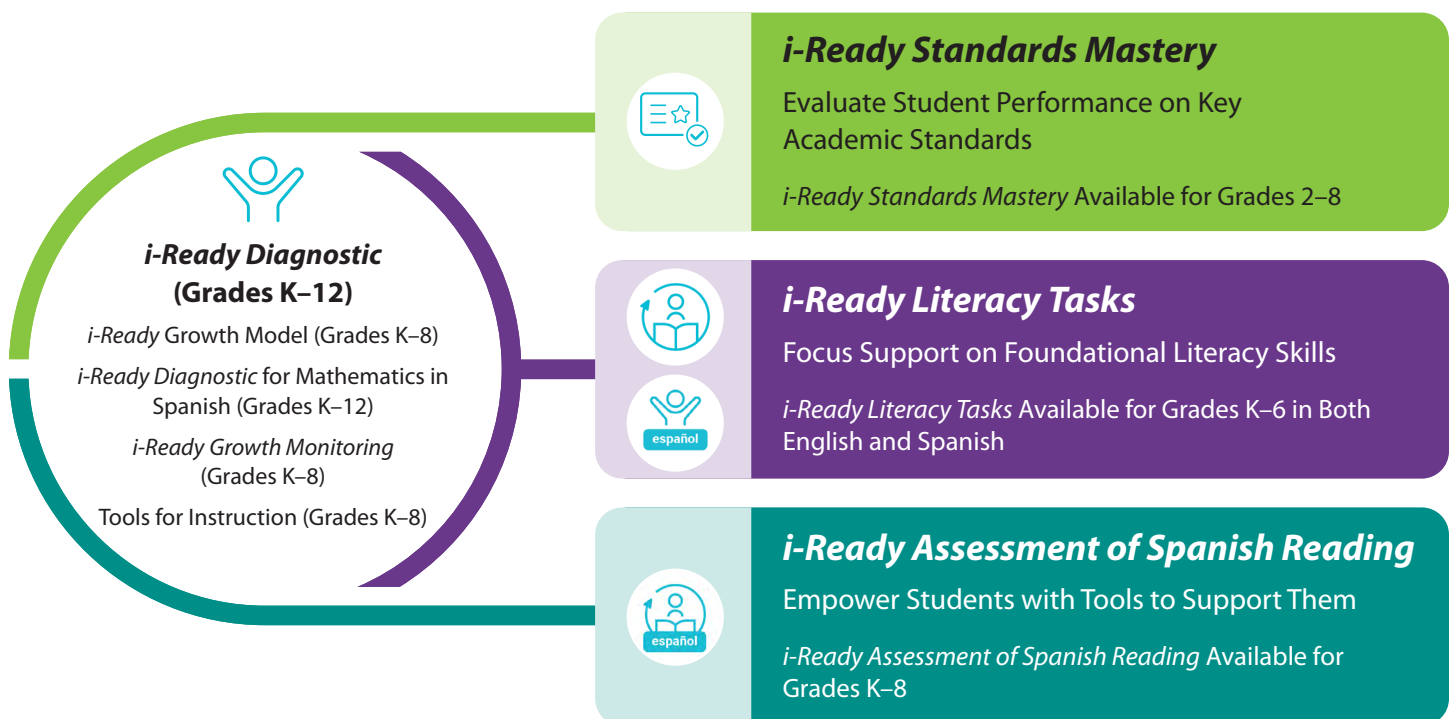


An Introduction to *i-Ready*

As a dedicated educator, you likely want nothing but the best for your students. You have sought ways to enhance their learning experiences and tailor your instruction to their unique needs. Over the years, you probably relied on assessments to gauge their progress and identify areas for improvement.

If your district has recently made the transition from using Istation's assessments to the *i-Ready Assessment* suite, you likely have many questions. How is administering *i-Ready* different from administering ISIP Reading and Mathematics? Do they measure the same things? What scores on *i-Ready* are like the scores you know and trust from ISIP? What *i-Ready* reports are like those from ISIP that you've been using to help your students?

The *i-Ready Assessment* suite is a dynamic and engaging platform that not only assesses students' knowledge and skills but also provides personalized instruction to bridge learning gaps. The heart of the assessment suite is the *i-Ready Diagnostic* assessment, and there are additional assessments in the suite to evaluate student performance on key academic standards, assess and support critical foundational literacy skills, and understand the needs of and provide support to Spanish-speaking students.



The most commonly used assessment from the *i-Ready Assessment* suite that is comparable to ISIP Reading and Mathematics is *i-Ready Diagnostic*, and this guide will provide information to help you transition from using Istation assessments to using the Diagnostic so you can better understand your students, cater to their unique strengths and weaknesses, and support their growth and development.

Istation® is a registered trademark of Imagination Station, Inc.

Uses: One Powerful Program to Know More

As you transition from using Istation assessments to using *i-Ready*, you're probably wondering, "Will *i-Ready* do what I was able to do with ISIP Reading and Mathematics?"

While ISIP assessments are progress monitoring assessments used to provide information about student achievement and growth and predict performance on a summative assessment, the *i-Ready Assessment* suite is often used for many purposes. In fact, educators often find they can address the majority of their assessment needs using the *i-Ready Assessment* suite as opposed to administering assessments from many different providers. In this way, *i-Ready* is one powerful program to help you know more about your students.

Some of the needs for which *i-Ready* is often used are listed below.

Screening and Placement

- ✓ Algebra Readiness
- ✓ English Learner Reclassification Data
- ✓ Gifted/Talented Identification
- ✓ Intervention (RTI/MTSS) Identification
- ✓ Third Grade Reading Guarantee
- ✓ Universal Screener for Reading/Mathematics
- ✓ Dyslexia Risk-Factor Screening

Informing Classroom Instruction

- ✓ Interim/Benchmark Assessment
- ✓ Standards Performance
- ✓ Growth Measures
- ✓ Instructional Planning Data for Scaffolding
- ✓ Automatic Small Groups and Reading Buddies
- ✓ Student/Teacher/School Goal-Setting Data
- ✓ Custom Data Analytics

Intervention and Acceleration

- ✓ MTSS/RTI/Intervention Screener
- ✓ Progress/Growth Monitoring
- ✓ Understanding Student Prerequisite Skills

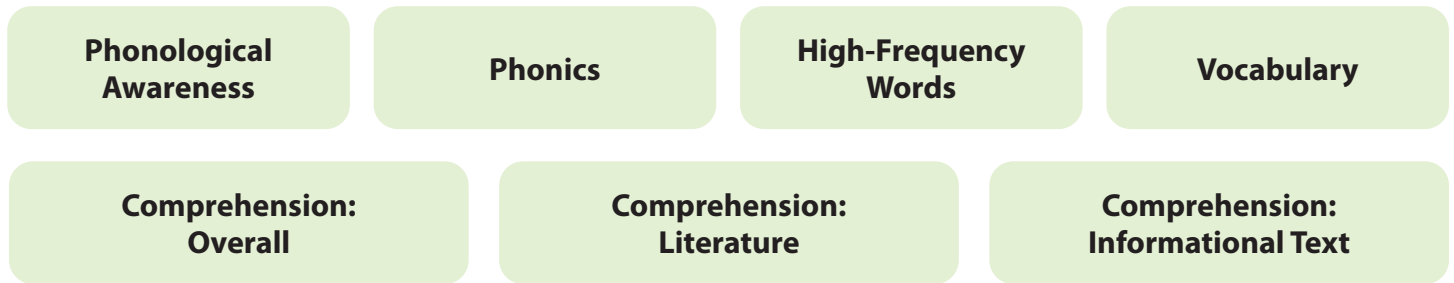
District Strategic Needs

- ✓ Accountability
- ✓ High Correlations with State Tests
- ✓ Triannual Benchmark Assessment

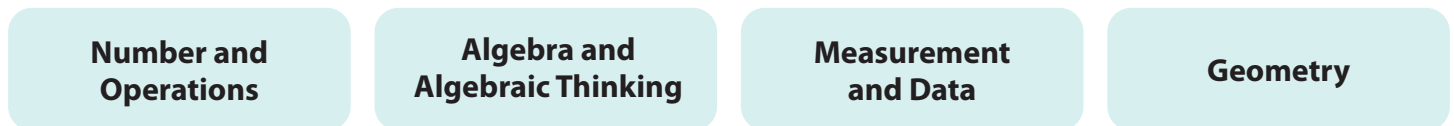
Content: Measuring What Matters

ISIP assessments are adaptive assessments that measure reading and mathematics ability and language acquisition. While *i-Ready Diagnostic* is also an adaptive assessment and can measure growth in reading and mathematics, it also provides criterion placement-level performance at, above, and below grade level. *i-Ready* assesses students' reading and mathematics skills to the sub-domain level, prescribing differentiated instruction so all learners can achieve success. *i-Ready* provides deeper understanding of student performance down to the domain level.

Reading domains:



Mathematics domains:



For more information, see [i-Ready Diagnostic: What It Measures](#).

Content: Measuring What Matters

While the ISIP assessments and the *i-Ready Diagnostic* measure many of the same concepts, the *i-Ready Diagnostic* is an adaptive assessment, and students can receive placements above or below their chronological grade. In designing our reporting, we needed to give educators a consistent way of tracking student performance across Grades K–12.

Academic Concept	Istation	<i>i-Ready Diagnostic</i>
Overall Reading Proficiency	Yes	Yes—criterion-referenced placement levels and percentile rank
Phonics Proficiency	While Istation does not provide an explicit phonics subtest, phonics is measured within the alphabetic decoding subtest in the ISIP Early Reading test.	Yes—criterion-referenced placement levels
Phonological Awareness Proficiency	While Istation does not provide an explicit phonological awareness subtest, phonological awareness is measured within the phonemic awareness subtest in the ISIP Early Reading test.	Yes—criterion-referenced placement levels
Vocabulary Proficiency	Yes	Yes—criterion-referenced placement levels
Overall Comprehension Proficiency	Yes	Yes—criterion-referenced placement levels
Comprehension: Literature Proficiency	Istation provides one overall reading comprehension score.	Yes—criterion-referenced placement levels
Comprehension: Informational Text Proficiency	Istation provides one overall reading comprehension score.	Yes—criterion-referenced placement levels
Overall Mathematics Proficiency	Yes	Yes—criterion-referenced placement levels
Number and Operations Proficiency	Yes	Yes—criterion-referenced placement levels
Measurement and Data Proficiency	Yes	Yes—criterion-referenced placement levels
Algebra and Algebraic Thinking Proficiency	Yes	Yes—criterion-referenced placement levels
Geometry Proficiency	Yes	Yes—criterion-referenced placement levels

For more information, see [i-Ready Diagnostic: What It Measures](#).

Implementation

The approach to implementing ISIP assessments and the *i-Ready Diagnostic* is somewhat similar as they are both fully computer-based assessments that can be group or individually administered.



Frequency of Administration

While *i-Ready Diagnostic* is usually administered three times per year (i.e., fall, winter, and spring), ISIP Reading and Mathematics assessments are often administered monthly.



Test Duration

The test length for each ISIP Reading and Mathematics assessment is roughly 30 minutes. The *i-Ready Diagnostic* tends to take about 45 minutes to administer but is often around 20 minutes for younger students.

For more on *i-Ready Diagnostic's* test length and scheduling suggestions, see [i-Ready Diagnostic: Guidance on Assessment Duration](#).



Approach to Administering

Like the ISIP assessments, the *i-Ready Diagnostic* can be administered in a group setting or individually to students. All questions are presented on the screen and automatically scored by the computer.



Testing Method

i-Ready Diagnostic and ISIP assessments are adaptive computer-based assessments.

Scores

While there are some differences between the scores available from ISIP Reading and Mathematics assessments and *i-Ready Diagnostic*, and scores among the assessments are generally not directly comparable, there are some similarities between some scores on each assessment that can help you transition from one assessment to the other. For example, the assessments all offer scaled scores and a growth metric associated with those scores.

The table below shows the scores available from each assessment that are most similar for each score type. For example, if you are used to using an ISIP Reading scale score, for *i-Ready Diagnostic* you can use overall scale scores.

While these scores are not the same—for example, any norms available from ISIP Reading and Mathematics assessments are not mathematically the same as the *i-Ready Diagnostic* norms—the scores provide some insight into how students are normatively performing.

Score Type	ISIP Reading and Mathematics	<i>i-Ready Diagnostic</i>
Overall Score(s)	ISIP Reading and Mathematics have scaled scores.	<i>i-Ready Diagnostic</i> Overall Score
Placement Levels	Achievement levels (i.e., Below Basic, Basic, Proficient, and Advanced)	Grade-level placements (e.g., Mid On Grade Level, Early On Grade Level, One Grade Level Below, Two or More Grade Levels Below and determined based on specific scale score ranges for each chronological grade)
Norms	National norms (developed to be representative of the national student population)	National norms (developed to be representative of the national student population)
Growth	ISIP Reading and Mathematics growth scores are provided in the Growth Pathway report and indicate if a student is on track for, above, or below expected growth.	Typical Growth and Stretch Growth® (two empirically derived measures for understanding student growth with realistic and ambitious targets to help more students reach proficiency)

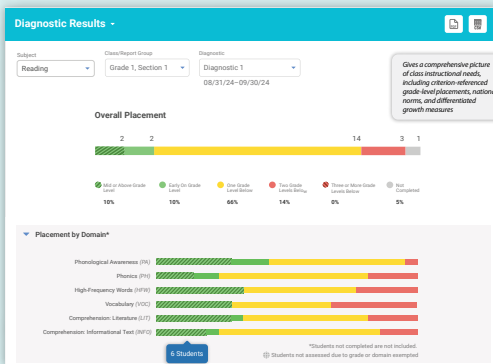
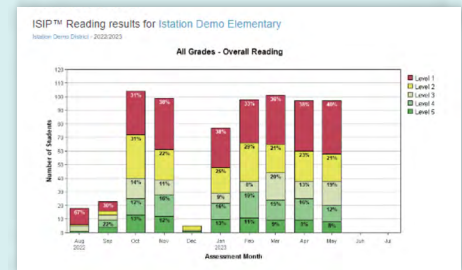
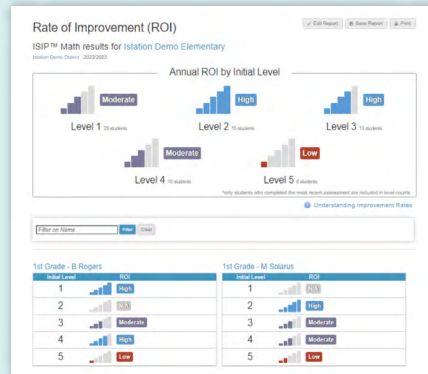
For more information, see [Understanding Score Types on the i-Ready Diagnostic](#).

Reports

The reports available from ISIP Reading and Mathematics assessments and *i-Ready Diagnostic* are often seen by educators as being quite different. Although both assessments' reports convey information about what a student knows, the look and feel of the reports provide information in different ways.

Purpose: Get an Overall Sense of Student Status and Growth

With ISIP Reading and Mathematics assessments, you may have used the **Level/Tier Movement** or **Rate of Improvement** reports.



Student: [Search]

Overall Placement & Scale Score

Placement by Domain

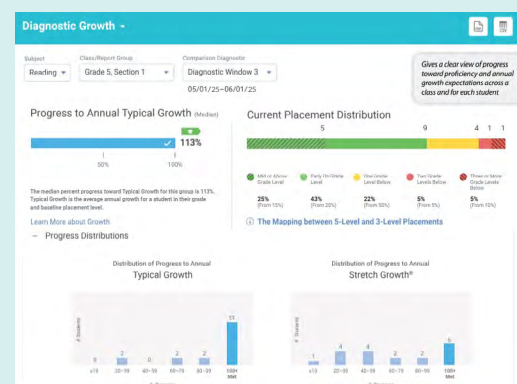
Student	Overall Placement & Scale Score	PA	Ph	HFV	VOC	Word	Spelling	Reading	Comprehension
Hardin, Grace	Grade K (430)	Grade K	Grade K	Grade K	Grade K	Grade K	Grade K	Grade K	Grade K
Levine, Brian	Grade K (430)	Grade K	Grade K	Grade K	Grade K	Grade K	Grade K	Grade K	Grade K
Finch, Dylan	Grade K (380)	Grade K	Grade K	Grade K	Grade K	Grade K	Grade K	Grade K	Grade K
Simpson, Roma	Grade K (383)	Grade K	Grade K	Grade K	Grade K	Grade K	Grade K	Grade K	Grade K
Malton, Anita	Grade K (378)	Grade K	Grade K	Grade K	Grade K	Grade K	Grade K	Grade K	Grade K
Laro, Martin	Grade K (375)	Grade K	Grade K	Grade K	Grade K	Grade K	Grade K	Grade K	Grade K
Colon, Esteban	Grade K (373)	Grade K	Grade K	Grade K	Grade K	Grade K	Grade K	Grade K	Grade K
Leone, Ito	Grade K (373)	Grade K	Grade K	Grade K	Grade K	Grade K	Grade K	Grade K	Grade K
Morales, Cristobal	Grade K (363)	Grade K	Grade K	Grade K	Grade K	Grade K	Grade K	Grade K	Grade K

With *i-Ready Diagnostic*, you can similarly use the **Diagnostic Results report**, which provides information at the district, school, class, and student levels.

Additionally, you can use the **Diagnostic Growth** report, which provides growth information at the class or group level.

Additional reports include:

- Instructional Groupings
- Grade-Level Planning (Prerequisites) (Mathematics)
- Grade-Level Scaffolding (Reading)
- Standards Performance



For more information, see the [i-Ready Reports Book](#).

Informing Instruction

ISIP assessments and *i-Ready Diagnostic* both provide instructional information, but the type of information and the resources associated with that information differ across the assessments.

With *i-Ready Diagnostic*, there are several ways in which instructionally relevant information is provided, including:

- Domain-level **Can Dos and Next Steps** that articulate the specific knowledge and skills students know based on their Diagnostic performance, and what concepts they should likely learn next
- **Tools for Instruction**, which are miniature lesson plans that can be used in groups or individually to address specific concepts

Placement by Domain

Results in Phonics indicate that Danielle has difficulty decoding words accurately. Vocabulary is another cause for concern. This score indicates that Danielle has areas of need in grade-level word knowledge. Targeting Phonics and Vocabulary instruction is the best way to support this student's growth as a reader. Taken together, this information places Danielle in Instructional Grouping 1.

Phonological Awareness	Phonics	High-Frequency Words	Vocabulary	Comprehension: Literature	Comprehension: Informational Text
Not Assessed	Grade 3 514	Surpassed Level	Grade 4 561	Grade 4 547	Grade 3 519

Developmental Analysis

This domain addresses Danielle's understanding of informational text. Results indicate that Danielle needs instruction in Grade 3 informational skills and strategies, such as identifying and evaluating an author's point of view or purpose, as well as analyzing cause-and-effect relationships. Teach a variety of informational texts, including biographies, autobiographies, and newspaper or magazine articles.

Can Dos

Danielle is developing proficiency with below-grade level informational texts in skills such as:

- Demonstrating understanding of key ideas and details
- Using text features to locate information
- Identifying reasons that support an author's point
- Retelling the most important ideas
- Comparing and contrasting information between two texts

[Standards](#)

Next Steps & Resources for Instruction

Extend understanding of cause and effect.

Extend understanding of cause and effect.

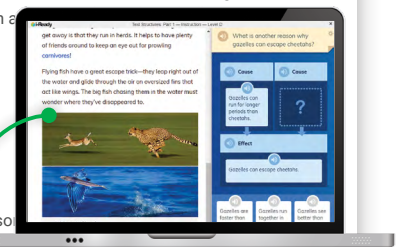
- Define effect as something that happens. Define cause as something that makes something happen.
- Read aloud a Grade 3 informational book and model the effect relationships.
- Say, "When I read, I think about things that happen and why they happen."
- Model asking and answering questions such as "What happened?" and "Why did it happen?"
- Then have Danielle read an informational text and look for details in the text to answer these questions.

Tools for Instruction

Identify Cause and Effect

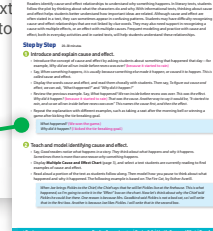
Additional Resources

[Magnetic Reading](#)



Tools for Instruction

Identify Cause and Effect



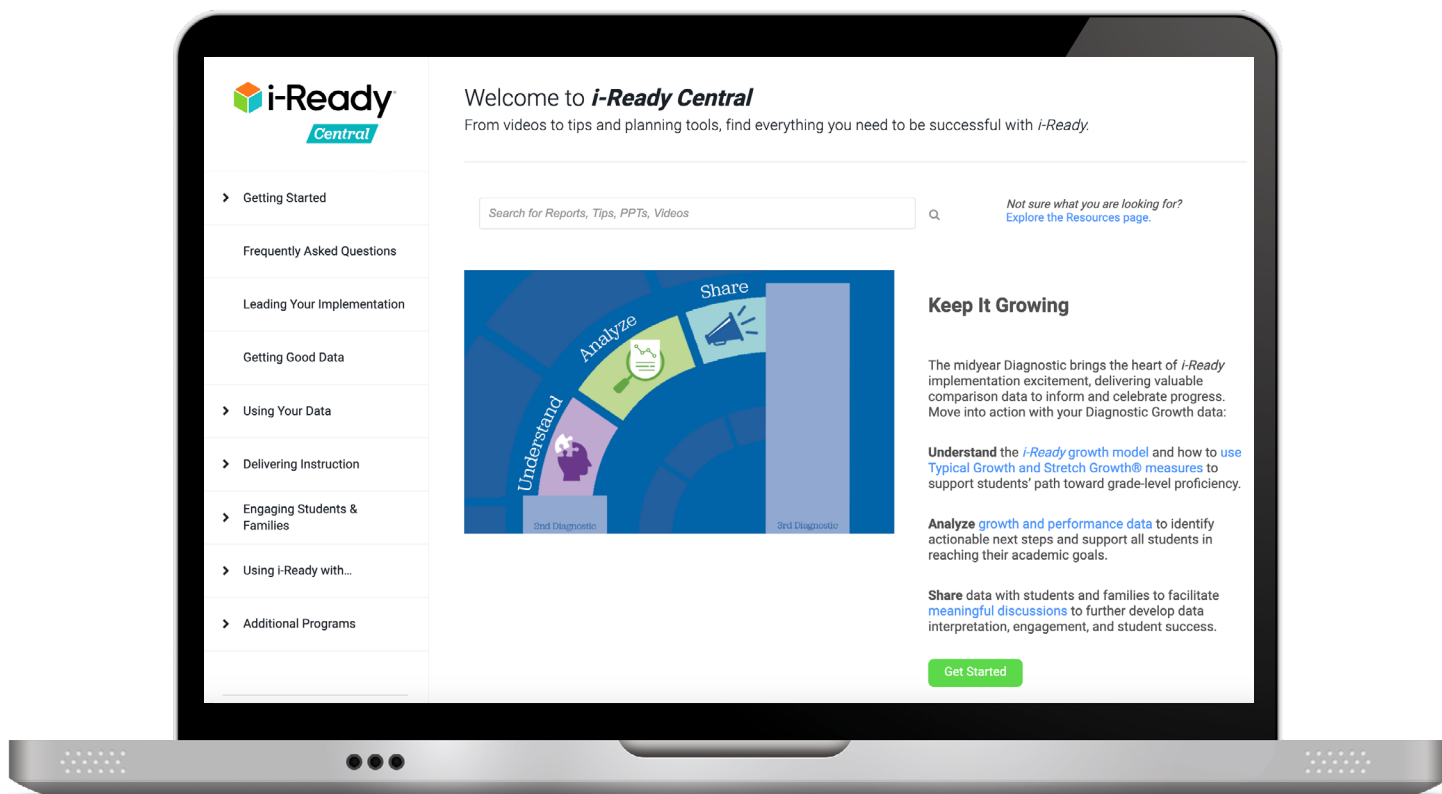
Additional Features

Many other features are available for *i-Ready Diagnostic*. The table below describes some of them.

Features	ISIP Reading and Mathematics	<i>i-Ready Assessments</i>
Spanish	ISIP Lectura	Mathematics available as an adaptive assessment that is part of <i>i-Ready Diagnostic</i> Separate Assessment of Spanish Reading assessment also available See how i-Ready helps support English Learners.
Accessibility	Many accessibility options available	Many accessibility options available See Accessibility and Accommodations with i-Ready Assessment and Personalized Instruction.
Progress Monitoring	Istation considers ISIP assessments to be progress monitoring tests.	Numerous approaches to progress monitoring available in the <i>i-Ready Assessment</i> suite See Progress Monitoring with i-Ready Assessment.
Links to State Tests	Limited availability See research findings.	The Diagnostic is linked to most state tests including SBAC, with the Projected Proficiency feature available. Literacy Tasks are not linked to state assessments. See States with Linking Studies.

We Look Forward to Partnering with You!

We think you'll find the *i-Ready Assessment* suite offers a wide range of information that can help you identify specific areas in which students may be excelling or needing support. This detailed data allows you to tailor your instruction to target individual needs effectively. By understanding precisely where students are facing challenges, you can provide them with targeted interventions, resources, and support, ultimately fostering their growth and helping them reach their full potential.



To learn more about using *i-Ready*, visit i-ReadyCentral.com.

Follow us to see how other educators are using *i-Ready* to personalize learning and accelerate growth.



@MyiReady



Curriculum Associates



@CurriculumAssoc



MyiReady