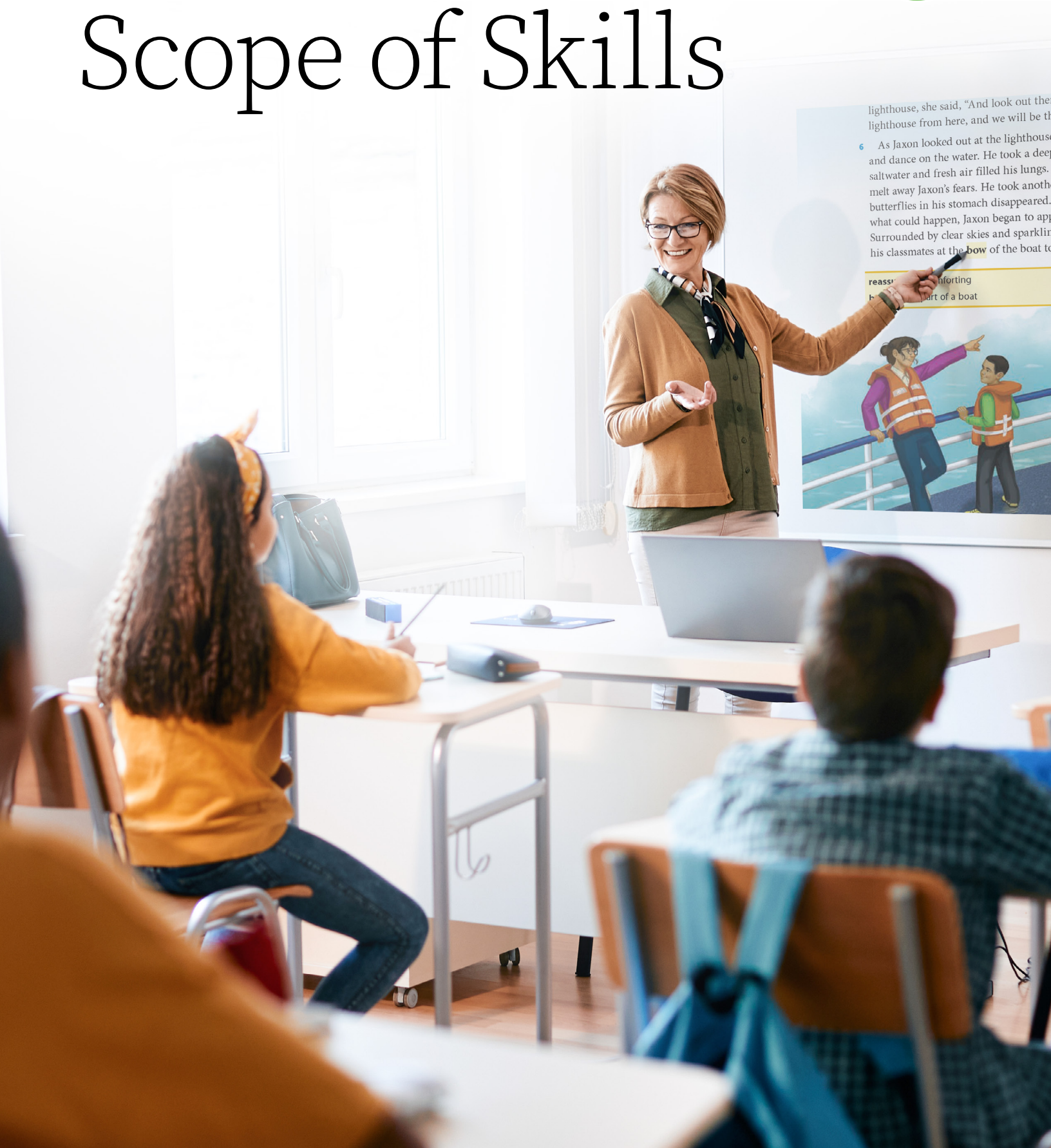


# Scope of Skills



## Unit 1 | Solving Problems

**LESSON 1** Focus Question: How do story characters use their wits to solve problems?

**FOCUS STANDARD:** Recount a Story

**TOPIC:** Clever Thinking

	Type of Text	Word Count	Lexile®
<i>Bear and Turtle Have a Race</i>	fable	344	540L
<i>Howling Up the Moon</i>	folktale	434	540L
<i>Ants Live Everywhere</i>	folktale	331	490L

**LESSON 2** Focus Question: How can others help us learn and grow?

**FOCUS STANDARD:** Determine the Central Message

**TOPIC:** Learning from Others

	Type of Text	Word Count	Lexile
<i>King of the Meadow</i>	folktale	394	540L
from <i>The Turtle Ship</i>	folktale	540	690L
<i>The Trouble with Talent</i>	realistic fiction	373	560L

**LESSON 3** Focus Question: How can people help each other solve problems?

**FOCUS STANDARD:** Ask and Answer Questions

**TOPIC:** The Simplest Solution

	Type of Text	Word Count	Lexile
<i>The Hermit's Secret</i>	folktale	1,193	660L

**LESSON 4** Focus Question: What happens when characters make mistakes?

**FOCUS STANDARD:** Describe Characters

**TOPIC:** Everyone Makes Mistakes

	Type of Text	Word Count	Lexile
<i>The Hula-Hoopin' Queen</i>	realistic fiction	1,167	620L

### CONNECT IT

**FOCUS STANDARD:** Recount a Story, Determine the Central Message, Ask and Answer Questions, Describe Characters

**TOPIC:** A Hero Among Us

	Type of Text	Word Count	Lexile
<i>Hercules and the Birds of Doom</i>	myth	643	620L

## Unit 2 | Ocean Survival

### LESSON 5 Focus Question: How do sea animals survive their habitats?

**FOCUS STANDARD:** Recount Key Details

**TOPIC:** Habitats of the Ocean

	Type of Text	Word Count	Lexile
<i>Ocean Homes</i>	science article	447	610L
<i>Deep Sea Survival</i>	science article	523	600L
<i>Welcome to the Reef</i>	science article	424	600L

### LESSON 6 Focus Question: How do an animal's special features help it survive?

**FOCUS STANDARD:** Determine the Main Idea

**TOPIC:** Survival Skills

	Type of Text	Word Count	Lexile
<i>Anglerfish: Fish That Fish</i>	science article	340	580L
<i>Bobtail Squids: Masters of Disguise</i>	science article	424	600L
<i>Parrotfish: Slimy Snugglers</i>	science article	408	580L

### LESSON 7 Focus Question: How do animals work together to survive?

**FOCUS STANDARD:** Describe Steps in a Process

**TOPIC:** Group Survival

	Type of Text	Word Count	Lexile
<i>Orcas on the Hunt</i>	science article	352	710L
<i>Stay in School!</i>	science article	506	800L
<i>Dolphin Chatter</i>	science article	382	780L

### LESSON 8 Focus Question: How do people help sea animals survive?

**FOCUS STANDARD:** Determine Point of View

**TOPIC:** Protecting the Ocean

	Type of Text	Word Count	Lexile
<i>The Manatees' Heroes</i>	science article	463	830L
<i>Follow Those Whales!</i>	science article	449	820L
<i>Saving Sea Turtles</i>	science article	396	820L

### CONNECT IT

**FOCUS STANDARD:** Recount Key Details, Determine the Main Idea, Determine Point of View

**TOPIC:** Reefs at Risk

	Type of Text	Word Count	Lexile
<i>The Trouble with Ghost Gear</i>	science article	765	800L

## Unit 3 | Making a Difference

**LESSON 9** Focus Question: How do young people make a difference in their communities?

**FOCUS STANDARD:** Determine Word Meanings

**TOPIC:** Young Voices

	Type of Text	Word Count	Lexile
<i>Calling All Volunteers</i>	social studies article	398	780L
<i>Citizen Connection</i>	social studies article	490	730L
<i>Learning from Each Other</i>	social studies article	390	830L

**LESSON 10** Focus Question: How can people use books to make a community stronger?

**FOCUS STANDARD:** Ask and Answer Questions

**TOPIC:** Books Change the World

	Type of Text	Word Count	Lexile
<i>Little Free Libraries</i>	social studies article	415	810L
<i>Storyteller Pura Belpré</i>	social studies article	472	800L
<i>Marley Dias: Changing the World through Books</i>	social studies article	398	740L

**LESSON 11** Focus Question: What does it take to become a young leader?

**FOCUS STANDARD:** Determine Word Meanings

**TOPIC:** We Can Help!

	Type of Text	Word Count	Lexile
<i>Rafael's Plan</i>	realistic fiction	1,170	680L

**CONNECT IT**

**FOCUS STANDARD:** Determine Word Meanings, Ask and Answer Questions

**TOPIC:** Fair Play

	Type of Text	Word Count	Lexile
<i>Fun for Everyone</i>	social studies article	671	770L

## Unit 4 | Changes in the West

### LESSON 12 Focus Question: What was travel like for early Americans?

**FOCUS STANDARD:** Compare Stories

**TOPIC:** On the Move

	Type of Text	Word Count	Lexile
<i>Kindness on the Trail</i>	historical fiction	420	570L
<i>An Adventure on Deck</i>	historical fiction	570	550L
<i>A Storm on the Horizon</i>	historical fiction	314	570L
<i>An Uncertain Future</i>	historical fiction	300	590L

### LESSON 13 Focus Question: How did changes in travel in the 1800s affect people's lives in America?

**FOCUS STANDARD:** Describe Connections in Texts

**TOPIC:** Travel before and after Trains

	Type of Text	Word Count	Lexile
<i>Into the West</i>	social studies article	432	810L
<i>Chin Lin Sou: Builder of the Transcontinental Railroad</i>	social studies article	563	760L
<i>All Aboard!</i>	social studies article	372	820L

### LESSON 14 Focus Question: What is it like to journey to a new place and meet new people?

**FOCUS STANDARD:** Connect Words and Pictures

**TOPIC:** Crossing Paths in the Changing West

	Type of Text	Word Count	Lexile
from <i>Prairie Lotus</i>	historical fiction	1,198	740L

### CONNECT IT

**FOCUS STANDARD:** Connect Words and Pictures, Compare Stories

**TOPIC:** The Ways of the West

	Type of Text	Word Count	Lexile
<i>Winter in the Rockies</i>	historical fiction	350	570L
<i>Summer on the Plains</i>	historical fiction	374	530L

## Unit 5 | Wild Weather

### LESSON 15 Focus Question: What makes some types of weather extreme?

**FOCUS STANDARD:** Connect Words and Pictures

**TOPIC:** Weather Watch

	Type of Text	Word Count	Lexile
<i>Stormy Weather</i>	science article	375	760L
<i>Rocky Weather Ahead!</i>	science article	386	740L
<i>Tornadoes</i>	science article	315	680L

### LESSON 16 Focus Question: Why do people study extreme weather?

**FOCUS STANDARD:** Use Text Features

**TOPIC:** Studying Extremes

	Type of Text	Word Count	Lexile
<i>At Home in the Sky</i>	science article	372	690L
<i>Weather Mountain</i>	science article	533	810L
<i>The Hurricane Hunter</i>	science article	428	810L

### LESSON 17 Focus Question: What is it like to experience severe weather?

**FOCUS STANDARD:** Analyze a Poem

**TOPIC:** Weather Verses

	Type of Text	Word Count	Lexile
<i>Hurricane</i>	poem	54	NP
<i>When Tornadoes Come Roaring In</i>	poem	95	NP
<i>Lightning</i>	poem	66	NP
<i>I Do Not Mind You, Winter Wind</i>	poem	66	NP
<i>Crick! Crack!</i>	poem	36	NP

### CONNECT IT

**FOCUS STANDARD:** Use Text Features, Connect Words and Pictures

**TOPIC:** Weather All Around

	Type of Text	Word Count	Lexile
<i>In the Clouds</i>	narrative nonfiction	615	590L

## Unit 6 | Artful Ideas

**LESSON 18** Focus Question: How does nature give people ideas to make art?

**FOCUS STANDARD:** Compare and Contrast Texts

**TOPIC:** Natural Creativity

	Type of Text	Word Count	Lexile
<i>Big Bugs</i>	arts article	420	690L
<i>Searching for Trolls</i>	arts article	390	630L
<i>Ocean Art</i>	arts article	352	810L
<i>Sea Creature Sculptures</i>	arts article	299	630L

**LESSON 19** Focus Question: Why do people make art?

**FOCUS STANDARD:** Analyze a Play

**TOPIC:** The Power of Art

	Type of Text	Word Count	Lexile
<i>Painting a Story</i>	drama	1,063	NP

**LESSON 20** Focus Question: How can people use art to show what they care about?

**FOCUS STANDARD:** Determine Point of View

**TOPIC:** Art in Action

	Type of Text	Word Count	Lexile
<i>The Cherry Blossoms of High Street</i>	realistic fiction	1,338	640L

### CONNECT IT

**FOCUS STANDARD:** Analyze a Play, Determine Point of View

**TOPIC:** Creative Solutions

	Type of Text	Word Count	Lexile
<i>Friendship Is Golden</i>	drama	655	NP

Complete your *Magnetic Reading*  
suite with our foundational  
skills program for Grades K-2.

[MagneticReading.com/K-2](https://MagneticReading.com/K-2)



[@MyiReady](https://www.instagram.com/MyiReady)



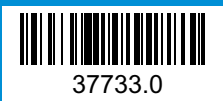
[Curriculum Associates](https://www.facebook.com/CurriculumAssociates)



[@CurriculumAssoc](https://www.twitter.com/CurriculumAssoc)



[iReady](https://www.pinterest.com/iReady)



© 2023 Curriculum Associates, LLC.  
All rights reserved. | 06/23 2.5K

**Curriculum Associates**