

Al's World

2026 Calendar



Al's World is a tribute to Albert "Al" Brigance. It is inspired by special educators like you and the important work you do every day. We hope Al's World gives you a smile or two!

When Al Brigance began his career as a school psychologist in the '70s, assessment tools provided data that showed only what a student *didn't* know and *couldn't* do. Al envisioned a unique way to assess exceptional students—one that would highlight what a student does know and can do. Based on this fundamental idea, Al began work on the Basic Skills Inventory—the first BRIGANCE inventory to measure a student's mastery of a specific set of skills. Since then, thousands of special educators nationwide have trusted the BRIGANCE tools to help them learn about their students' individual strengths and needs, plan appropriate instruction, and monitor progress.

At Curriculum Associates, we proudly continue this BRIGANCE legacy with our current line of BRIGANCE assessment tools and instructional resources.

Meet the BRIGANCE Staff!



Judy, Special
Educator Extraordinaire



Al, Judy's Class
Support Dog



Suzi, Administrator



Doug, Guidance Counselor



Emelia, Speech Pathologist



Stephanie, Transition
Coordinator



This special edition of Al's World celebrates 50 years of BRIGANCE with a blend of old favorites and brand-new cartoons! Can you spot the classics?

2026

January

S	M	T	W	T	F	S
				1	2	3
4	5	6	7	8	9	10
11	12	13	14	15	16	17
18	19	20	21	22	23	24
25	26	27	28	29	30	31

February

S	M	T	W	T	F	S
1	2	3	4	5	6	7
8	9	10	11	12	13	14
15	16	17	18	19	20	21
22	23	24	25	26	27	28

March

S	M	T	W	T	F	S
1	2	3	4	5	6	7
8	9	10	11	12	13	14
15	16	17	18	19	20	21
22	23	24	25	26	27	28
29	30	31				

April

S	M	T	W	T	F	S
			1	2	3	4
5	6	7	8	9	10	11
12	13	14	15	16	17	18
19	20	21	22	23	24	25
26	27	28	29	30		

May

S	M	T	W	T	F	S
					1	2
3	4	5	6	7	8	9
10	11	12	13	14	15	16
17	18	19	20	21	22	23
24	25	26	27	28	29	30
31						

June

S	M	T	W	T	F	S
	1	2	3	4	5	6
7	8	9	10	11	12	13
14	15	16	17	18	19	20
21	22	23	24	25	26	27
28	29	30				

July

S	M	T	W	T	F	S
			1	2	3	4
5	6	7	8	9	10	11
12	13	14	15	16	17	18
19	20	21	22	23	24	25
26	27	28	29	30	31	

August

S	M	T	W	T	F	S
						1
2	3	4	5	6	7	8
9	10	11	12	13	14	15
16	17	18	19	20	21	22
23	24	25	26	27	28	29
30	31					

September

S	M	T	W	T	F	S
		1	2	3	4	5
6	7	8	9	10	11	12
13	14	15	16	17	18	19
20	21	22	23	24	25	26
27	28	29	30			

October

S	M	T	W	T	F	S
				1	2	3
4	5	6	7	8	9	10
11	12	13	14	15	16	17
18	19	20	21	22	23	24
25	26	27	28	29	30	31

November

S	M	T	W	T	F	S
1	2	3	4	5	6	7
8	9	10	11	12	13	14
15	16	17	18	19	20	21
22	23	24	25	26	27	28
29	30					

December

S	M	T	W	T	F	S
		1	2	3	4	5
6	7	8	9	10	11	12
13	14	15	16	17	18	19
20	21	22	23	24	25	26
27	28	29	30	31		



Flip the page to see January 2026!



Sometimes you have to dive right in.

January 2026



Have you registered for the CEC Convention?

Sunday	Monday	Tuesday	Wednesday	Thursday	Friday	Saturday
28	29	30	31	New Year's Day 1	2	3
4	5	6	7	8	9	10
11	12	13	14	15	16	17
18	Martin Luther King, Jr. Day 19	20	21	22	23	24
25	26	27	28	29	30	31



Finally—a museum for all of us!

February 2026



Visit us at the
LDA and NASP Conventions!

Sunday	Monday	Tuesday	Wednesday	Thursday	Friday	Saturday
	1 Groundhog Day 2 	3	4	5	6	7
8	9	10	11	12	13	14 Valentine's Day 
15 Presidents' Day 	16 LDA Convention—St. Louis, MO	17 Ramadan Begins	18	19	20	21
22	23	24	25	26	27	28
		NASP Convention—Chicago, IL				
1	2	3	4	5	6	7



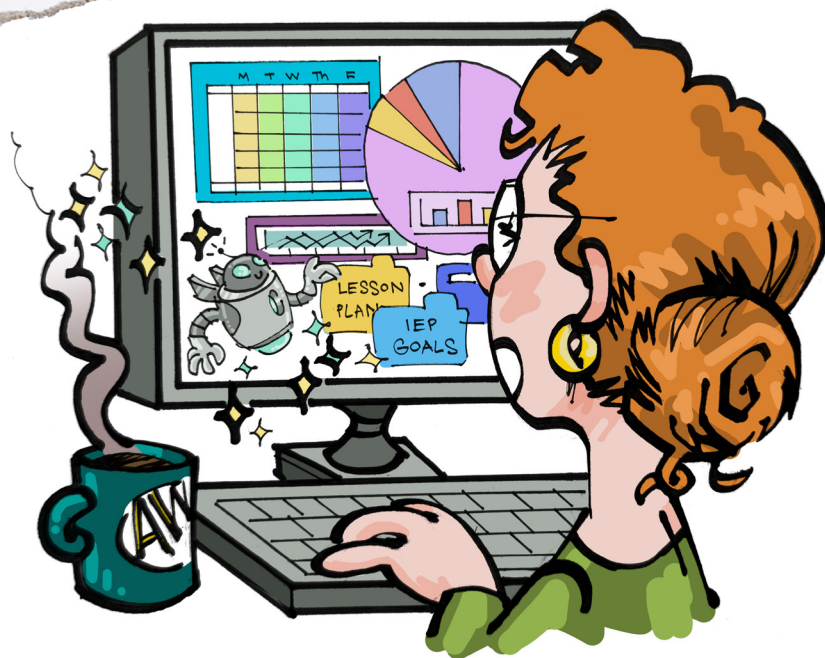
Every little step is a big clue toward success.

March 2026





Visit us at the
CEC Convention!

Sunday	Monday	Tuesday	Wednesday	Thursday	Friday	Saturday
1	2	3	4	5	6	7
Daylight Saving Time Begins 8	9	10	11	12	13	14
			CEC Convention & Expo—Salt Lake City, UT			
15	16	St. Patrick's Day 17	18	Eid al-Fitr 19	First Day of Spring 20	21
						
22	23	24	25	26	27	28
29	30	31	1	2	3	4



Judy waves her digital wand—AI magic boosts efficiency and tailors schedules just right!

April 2026

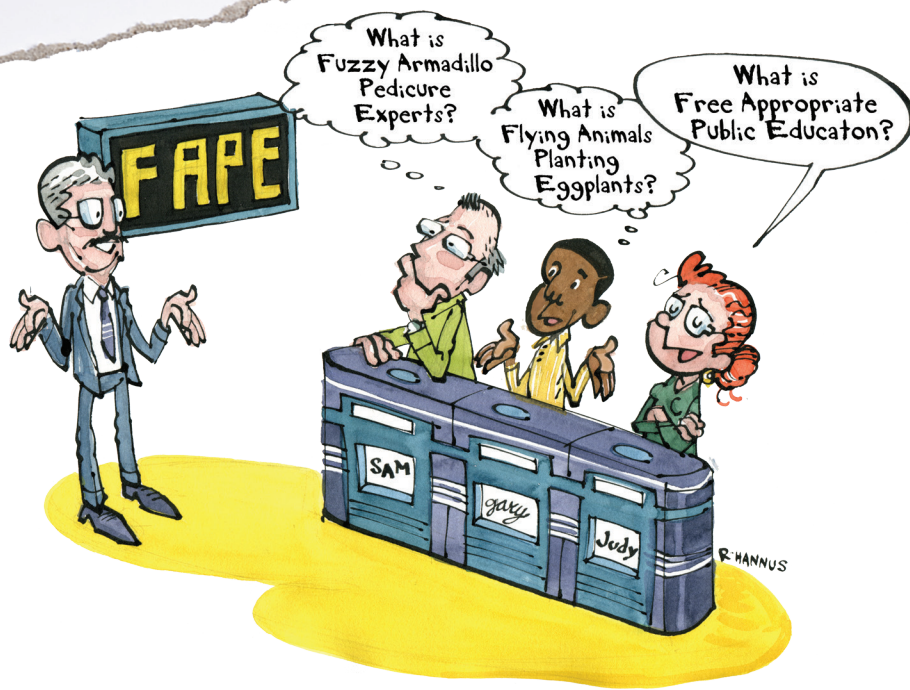
Sunday	Monday	Tuesday	Wednesday	Thursday	Friday	Saturday
29	30	31	April Fool's Day 1 Passover Begins 	2	3	4
Easter 5	6	7	8	9	10	11
12	13	14	15	16	17	18
19	20	21	Earth Day 22 	23	24	25
26	27	28	29	30	1	2



Early days are not without their silver linings.

May 2026

Sunday	Monday	Tuesday	Wednesday	Thursday	Friday	Saturday
26	27	28	29	30	1	2
3	4	Cinco de Mayo 	5	6	7	8
		Teacher Appreciation Week				
		Teacher Appreciation Day				
Mother's Day 	10	11	12	13	14	15
16	17	18	19	20	21	22
23	24	25	26	27	28	29
30	Memorial Day 	31				



Judy rocked the "Special Education Acronyms" category.

June 2026

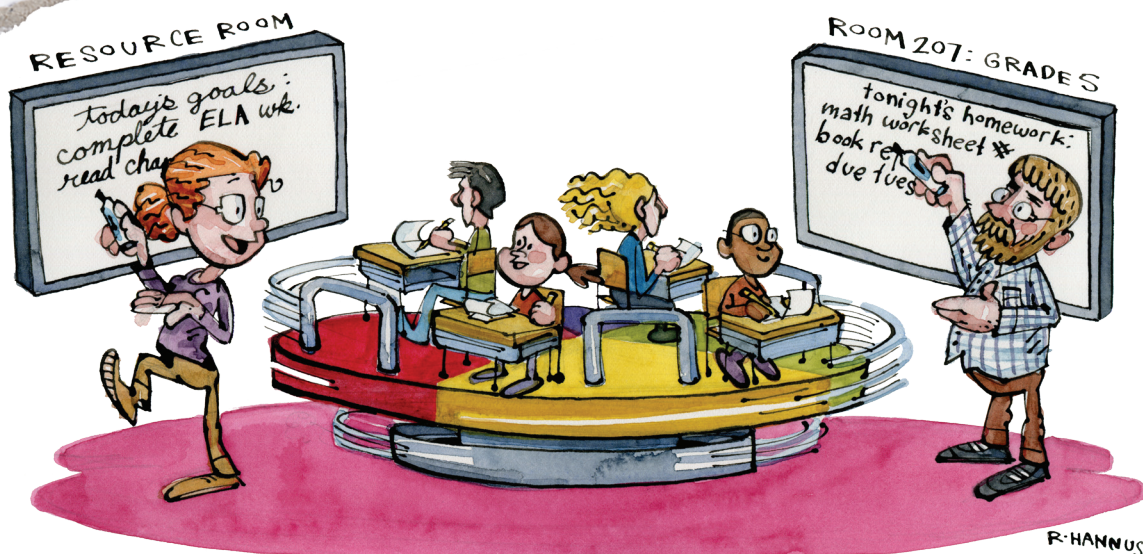
Sunday	Monday	Tuesday	Wednesday	Thursday	Friday	Saturday
31	1	2	3	4	5	6
7	8	9	10	11	12	13
Flag Day 14 	15	16	17	18	Juneteenth 19 	20
Father's Day 21 	22	23	24	25	26	27
First Day of Summer 28	29	30	1	2	3	4



Summer break, all abilities welcome!

July 2026

Sunday	Monday	Tuesday	Wednesday	Thursday	Friday	Saturday
28	29	30	1	2	3	4 Independence Day 
5	6	7	8	9	10	11
12	13	14	15	16	17	18
19	20	21	22	23	24	25
26	27	28	29	30	31	1



New classroom furniture made pull-outs much easier.

August 2026



Do you have enough student
Record Books for your
BRIGANCE Inventories?

Sunday	Monday	Tuesday	Wednesday	Thursday	Friday	Saturday
26	27	28	29	30	31	1
2	3	4	5	6	7	8
9	10	11	12	13	14	15
16	17	18	19	20	21	22
23	24	25	26	27	28	29
30	31					



Judy puts the icing on 50 years of BRIGANCE
—one hardworking swirl at a time!

September 2026



Get tips for planning
successful assessments:

BRIGANCE.com/TipsForSuccessfulAssessment

Sunday	Monday	Tuesday	Wednesday	Thursday	Friday	Saturday
30	31	1	2	3	4	5
6 	Labor Day 7	8	9	10	Rosh Hashanah Begins 11	12
13	14	15	16	17	18	19
Yom Kippur Begins 20	21	First Day of Fall 22	23	24	25	26
27	28	29 	30	1	2	3



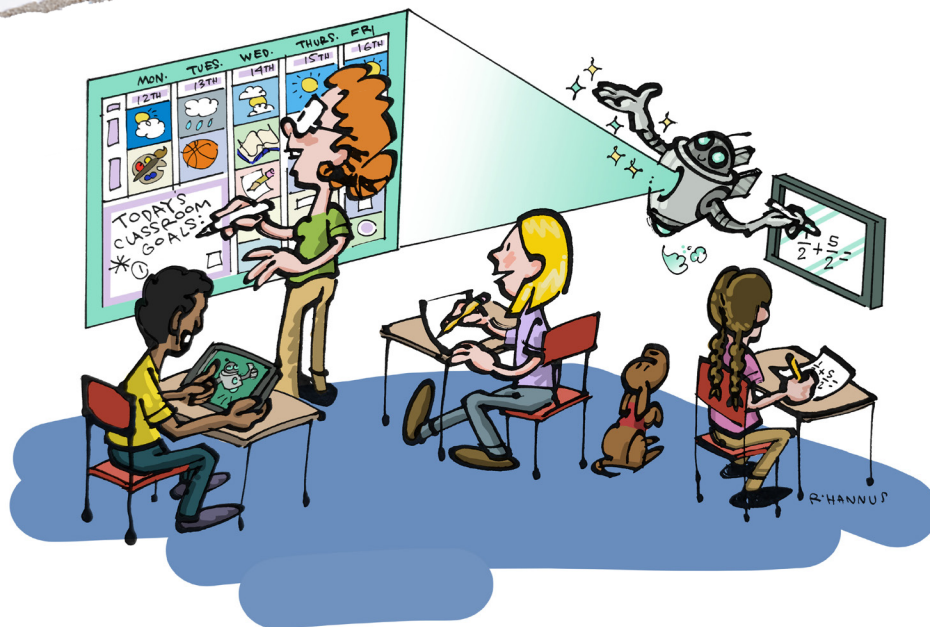
An all-too-common sighting of the IEP zombie.

October 2026



Have you checked out the second editions of our Transition Skills programs?

Sunday	Monday	Tuesday	Wednesday	Thursday	Friday	Saturday
27	28	29	30	1	2	3
4	5	6	7	8	9	10
11	12	13	14	15	16	17
18	19	20	21	22	23	24
25	26	27	28	29	30	Halloween 31



AI in special education: leveling the playing field,
one voice command at a time.

November 2026

Sunday	Monday	Tuesday	Wednesday	Thursday	Friday	Saturday
Daylight Saving Time Ends 	2	Election Day 3	4	5	6	7
8	9	10	Veterans Day 	12	13	14
15	16	17	18	19	20	21
22	23	24	25	Thanksgiving 26 	27	28
29	30	1	2	3	4	5



Accommodations abound!

December 2026



Visit us at the
NAEYC Conference!

Sunday	Monday	Tuesday	Wednesday	Thursday	Friday	Saturday
29	30	1	2	3	Hanukkah Begins 4	5
						NAEYC Conference
6	7	8	9	10	11	12
NAEYC Conference—Washington, DC						
13	14	15	16	17	18	19
20	First Day of Winter 21	22	23	Christmas Eve 24	Christmas Day 25	Kwanzaa Begins 26
						
27	28	29	30	New Year's Eve 31	1	2
						

Address the Needs of Each Special Education Student

BRIGANCE has been trusted by special educators since 1976 to help address a broad range of student needs—from early developmental skills assessment to transition planning support. The BRIGANCE Special Education family of products reflects Individuals with Disabilities Education Act requirements as well as state standards. And from the publisher of BRIGANCE, *i-Ready®* combines a valid and reliable adaptive assessment with explicit, scaffolded personalized instruction. BRIGANCE and *i-Ready* together: all you need to meet legislative mandates and serve your students in the best way possible.



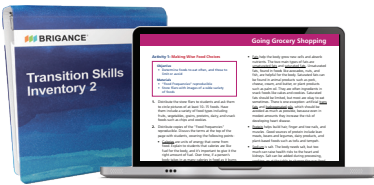
New! Criterion-Referenced Inventory of Early Development 4

Assess specific strengths and needs and inform instruction in key developmental and academic domains: Physical, Language, Cognitive, Adaptive, Social-Emotional, Literacy, Mathematics, and Science.



Inventory of Early Development III Standardized

Derive a range of standardized scores for children from birth through age 7 across key early learning domains.



Transition Skills Inventory 2 (TSI 2) and Transition Skills Activities 2 (TSA 2)

Support each student in determining their own path after high school, assess progress toward transition goals in the skill areas identified by IDEA Indicator 13, and deliver instruction with a digital resource of more than 100 instructional activities. Together, the new TSI 2 and the TSA 2 provide a comprehensive set of tools to meet the needs of diverse learners as they develop skills to thrive as adults in their personal lives, workplaces, and communities.



i-Ready

Support every student with one coherent assessment program in mathematics and reading, designed to deliver clear data, connected to precise instruction, and backed by committed service.

