

Al's World

2023-2024 School Year Calendar



Al's World is a tribute to Albert "Al" Brigance. It is inspired by special educators like you and the important work you do every day. We hope Al's World gives you a smile or two!

When Al Brigance began his career as a school psychologist in the '70s, assessment tools provided data that showed only what a student *didn't* know and *couldn't* do. Al envisioned a unique way to assess exceptional students—one that would highlight what a student does know and can do. Based on this fundamental idea, Al began work on the Basic Skills Inventory—the first BRIGANCE inventory to measure a student's mastery of a specific set of skills. Since then, thousands of special educators nationwide have trusted the BRIGANCE tools to help them learn about their students' individual strengths and needs, plan appropriate instruction, and monitor progress.

At Curriculum Associates, we proudly continue this BRIGANCE legacy with our current line of BRIGANCE assessment tools and instructional resources.

Meet the BRIGANCE Staff!



Judy
Special Educator Extraordinaire



Al
Judy's Class Support Dog



Suzi
Administrator



Doug
Guidance Counselor



Emelia
Speech Pathologist



Stephanie
Transition Coordinator



Sign up to get an Al's World cartoon
in your inbox each month:
[BRIGANCE.com/Als-World](https://www.BRIGANCE.com/Als-World)

2023

January

S	M	T	W	T	F	S
1	2	3	4	5	6	7
8	9	10	11	12	13	14
15	16	17	18	19	20	21
22	23	24	25	26	27	28
29	30	31				

February

S	M	T	W	T	F	S
			1	2	3	4
5	6	7	8	9	10	11
12	13	14	15	16	17	18
19	20	21	22	23	24	25
26	27	28				

March

S	M	T	W	T	F	S
			1	2	3	4
5	6	7	8	9	10	11
12	13	14	15	16	17	18
19	20	21	22	23	24	25
26	27	28	29	30	31	

April

S	M	T	W	T	F	S
						1
2	3	4	5	6	7	8
9	10	11	12	13	14	15
16	17	18	19	20	21	22
23/30	24	25	26	27	28	29

May

S	M	T	W	T	F	S
	1	2	3	4	5	6
7	8	9	10	11	12	13
14	15	16	17	18	19	20
21	22	23	24	25	26	27
28	29	30	31			

June

S	M	T	W	T	F	S
				1	2	3
4	5	6	7	8	9	10
11	12	13	14	15	16	17
18	19	20	21	22	23	24
25	26	27	28	29	30	

July

S	M	T	W	T	F	S
						1
2	3	4	5	6	7	8
9	10	11	12	13	14	15
16	17	18	19	20	21	22
23/30	24/31	25	26	27	28	29

August

S	M	T	W	T	F	S
		1	2	3	4	5
6	7	8	9	10	11	12
13	14	15	16	17	18	19
20	21	22	23	24	25	26
27	28	29	30	31		

September

S	M	T	W	T	F	S
					1	2
3	4	5	6	7	8	9
10	11	12	13	14	15	16
17	18	19	20	21	22	23
24	25	26	27	28	29	30

October

S	M	T	W	T	F	S
1	2	3	4	5	6	7
8	9	10	11	12	13	14
15	16	17	18	19	20	21
22	23	24	25	26	27	28
29	30	31				

November

S	M	T	W	T	F	S
				1	2	3
4	5	6	7	8	9	10
11	12	13	14	15	16	17
18	19	20	21	22	23	24
25	26	27	28	29	30	

December

S	M	T	W	T	F	S
						1
2	3	4	5	6	7	8
9	10	11	12	13	14	15
16	17	18	19	20	21	22
23	24	25	26	27	28	29
30	31					

2024

January

S	M	T	W	T	F	S
	1	2	3	4	5	6
7	8	9	10	11	12	13
14	15	16	17	18	19	20
21	22	23	24	25	26	27
28	29	30	31			

February

S	M	T	W	T	F	S
				1	2	3
4	5	6	7	8	9	10
11	12	13	14	15	16	17
18	19	20	21	22	23	24
25	26	27	28	29		

March

S	M	T	W	T	F	S
					1	2
3	4	5	6	7	8	9
10	11	12	13	14	15	16
17	18	19	20	21	22	23
24/31	25	26	27	28	29	30

April

S	M	T	W	T	F	S
	1	2	3	4	5	6
7	8	9	10	11	12	13
14	15	16	17	18	19	20
21	22	23	24	25	26	27
28	29	30				

May

S	M	T	W	T	F	S
			1	2	3	4
5	6	7	8	9	10	11
12	13	14	15	16	17	18
19	20	21	22	23	24	25
26	27	28	29	30	31	

June

S	M	T	W	T	F	S
						1
2	3	4	5	6	7	8
9	10	11	12	13	14	15
16	17	18	19	20	21	22
23/30	24	25	26	27	28	29

July

S	M	T	W	T	F	S
	1	2	3	4	5	6
7	8	9	10	11	12	13
14	15	16	17	18	19	20
21	22	23	24	25	26	27
28	29	30	31			

August

S	M	T	W	T	F	S
				1	2	3
4	5	6	7	8	9	10
11	12	13	14	15	16	17
18	19	20	21	22	23	24
25	26	27	28	29	30	31

September

S	M	T	W	T	F	S
1	2	3	4	5	6	7
8	9	10	11	12	13	14
15	16	17	18	19	20	21
22	23	24	25	26	27	28
29	30					

October

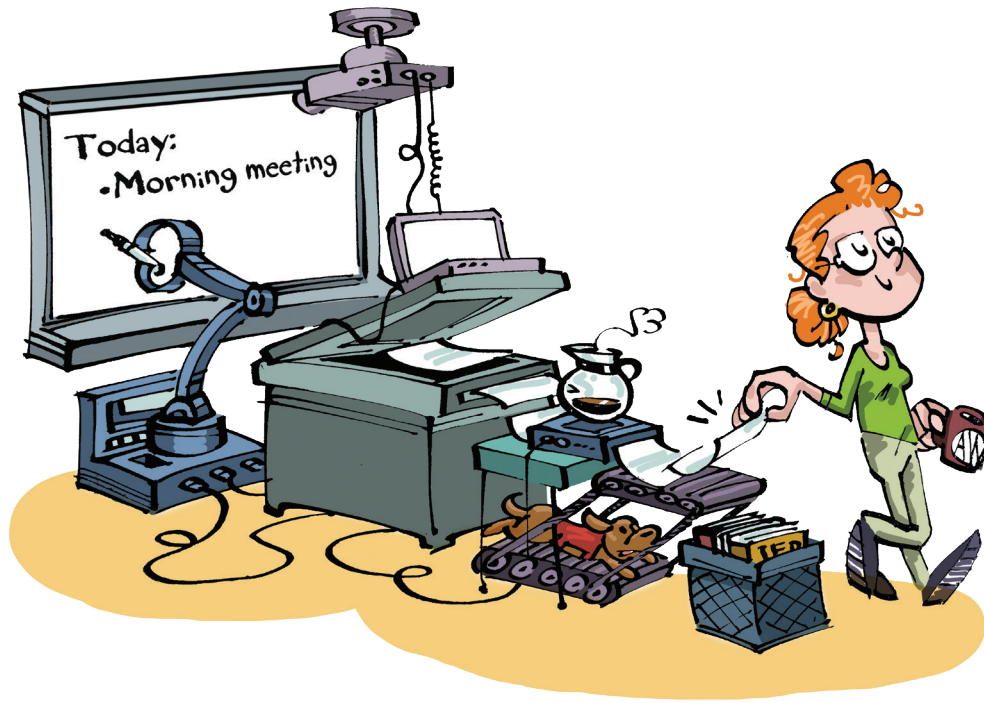
S	M	T	W	T	F	S
		1	2	3	4	5
6	7	8	9	10	11	12
13	14	15	16	17	18	19
20	21	22	23	24	25	26
27	28	29	30	31		

November

S	M	T	W	T	F	S
					1	2
3	4	5	6	7	8	9
10	11	12	13	14	15	16
17	18	19	20	21	22	23
24	25	26	27	28	29	30

December

S	M	T	W	T	F	S
1	2	3	4	5	6	7
8	9	10	11	12	13	14
15	16	17	18	19	20	21
22	23	24	25	26	27	28
29	30	31				



Judy had never felt so prepared to start the year.

August 2023



Do you have enough student Record Books for your BRIGANCE Inventories?

Sunday	Monday	Tuesday	Wednesday	Thursday	Friday	Saturday
30	31	1	2	3	4	5
6	7	8	9	10	11	12
13	14	15	16	17	18	19
20	21	22	23	24	25	26
27	28	29	30	31	1	2




When our talents combine, we are an IEP power team!

September 2023



Get tips for planning successful assessments:

BRIGANCE.com/TipsForSuccessfulAssessment

Sunday	Monday	Tuesday	Wednesday	Thursday	Friday	Saturday
27	28	29	30	31	1	2
3 	Labor Day 4	5	6	7	8	9
10	11	12	13	14	Rosh Hashanah Begins 15	16
17	18	19	20	21	22	First Day of Fall 23 
Yom Kippur Begins 24	25	26	27	28	29	30



Not even the scariest costume can faze Judy-she's seen it all.

October 2023



Have you checked out the new second editions of our Transition Skills programs?

Sunday	Monday	Tuesday	Wednesday	Thursday	Friday	Saturday
1	2	3	4	5	6	7
8	9	10	11	12	13	14
15	16	17	18	19	20	21
22	23	24	25	26	27	28
29	30	Halloween 31	1	2	3	4





It's helpful to have back-up plans for the back-up plans.

November 2023



Have you registered for the CEC Convention?

Sunday	Monday	Tuesday	Wednesday	Thursday	Friday	Saturday		
29	30	31	1	2	3	4		
Daylight Saving Time Ends 	5	6	Election Day	7	8	9	10	Veterans Day 
11	12	13	14	15	16	17	18	
19	20	21	22	Thanksgiving 	23	24	25	
26	27	28	29	30	1	2		



Accommodations abound!

December 2023

Sunday	Monday	Tuesday	Wednesday	Thursday	Friday	Saturday
26	27	28	29	30	1	2
3	4	5	6	Hanukkah Begins 7	8	9
10	11	12	13	14	15	16
17	18	19	20	First Day of Winter 21	22	23
24	Christmas 25	Kwanzaa Begins 26	27	28	29	30
New Year's Eve 31						



Some superheroes wear capes,
some superheroes provide **FAPE**.

January 2024

Sunday	Monday	Tuesday	Wednesday	Thursday	Friday	Saturday
31	New Year's Day 1 	2	3	4	5	6
7		9	10	11	12	13
14	Martin Luther King, Jr. Day 15 	16	17	18	19	20
21	22	23	24	25	26	27
28	29	30	31	1	2	3






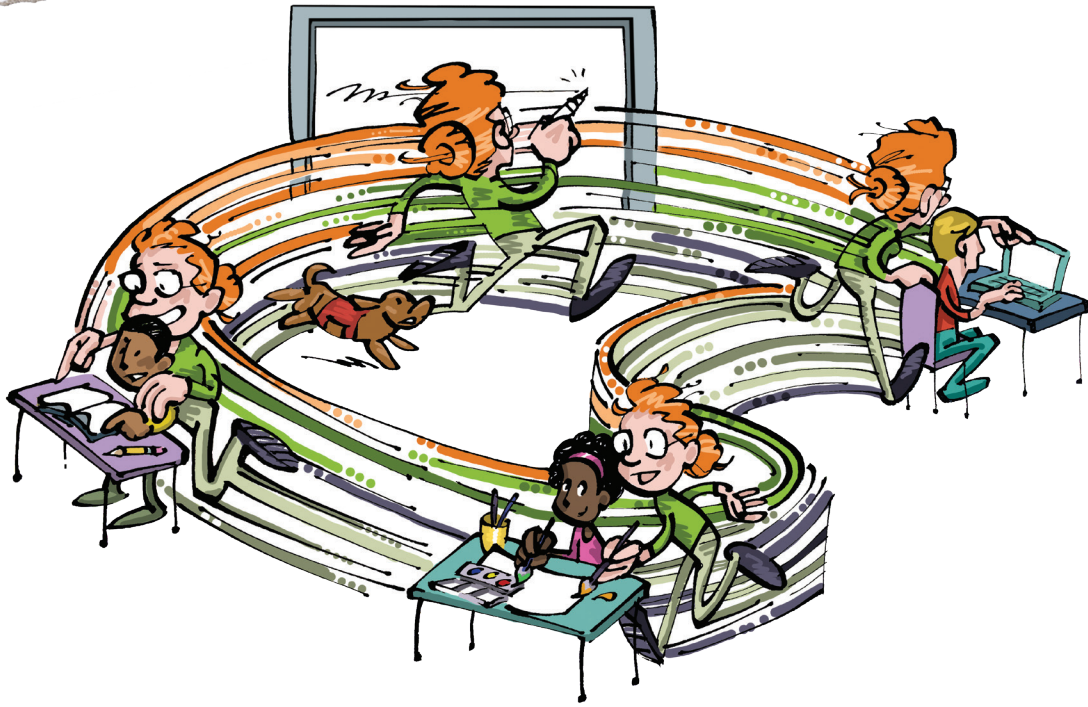
Every summit is within reach when
Judy and her colleagues work together.

February 2024



Visit us at the
NASP Convention!

Sunday	Monday	Tuesday	Wednesday	Thursday	Friday	Saturday
28	29	30	31	1	Groundhog Day 2 	3
4	5	6	7	8	9	10
11	12	13	Valentine's Day 14 	15	16	17
18	Presidents' Day 19 	20	21	22	23	24
25	26	27	28	29	1	2



Judy never had any trouble getting her steps in for the day.

March 2024



Visit us at the
CEC Convention!

Sunday	Monday	Tuesday	Wednesday	Thursday	Friday	Saturday
25	26	27	28	29	1	2
3	4	5	6	7	8	9
Daylight Saving Time Begins Ramadan Begins 	11	12	CEC Convention & Expo—San Antonio, TX			
St. Patrick's Day 	18	First Day of Spring 	20	21	22	23
24	25	26	27	28	29	30
Easter 31						



Judy wondered if the paperwork could see her from in here.

April 2024



Do you have enough student Record Books for your BRIGANCE Inventories?

Sunday	Monday	Tuesday	Wednesday	Thursday	Friday	Saturday
31	April Fool's Day 1 	2	3	4	5	6
7	8	Eid al-Fitr 9	10	11	12	13
14	15	16	17	18	19	20
21	Earth Day Passover Begins 22 	23	24	25	26	27
28	29	30	1	2	3	4



Judy could almost hear "Eye of the Tiger" playing at the end of her final IEP meeting.

May 2024

Sunday	Monday	Tuesday	Wednesday	Thursday	Friday	Saturday	
28	29	30	1	2	3	4	
Cinco de Mayo 	5	6	7 Teacher Appreciation Day 	8	9	10	11
Mother's Day 	12	13	14	15	16	17	18
19	20	21	22	23	24	25	
26	Memorial Day 	27	28	29	30	31	



The school book fair offered great summer reading for everyone.

June 2024

Sunday	Monday	Tuesday	Wednesday	Thursday	Friday	Saturday
26	27	28	29	30	31	1
2	3	4	5	6	7	8
9	10	11	12	13	Flag Day 	14
Father's Day 	16	17	18	Juneteenth 	19	20
				First Day of Summer 	21	22
23	24	25	26	27	28	29
30						



Education is a two-way street.

July 2024

Sunday	Monday	Tuesday	Wednesday	Thursday	Friday	Saturday
30	1	2	3	Independence Day 4 	5	6
7	8	9	10	11	12	13
14	15	16	17	18	19	20
21	22	23	24	25	26	27
28	29	30	31	1	2	3

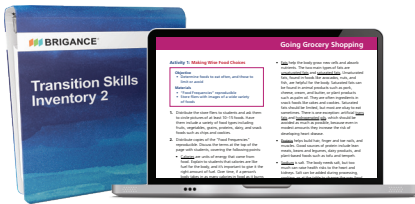
Address the Needs of Each Special Education Student

BRIGANCE has been trusted by special educators since 1976 to help address a broad range of student needs—from early developmental skills assessment to transition planning support. The BRIGANCE Special Education family of products reflects Individuals with Disabilities Education Act requirements as well as state standards. And from the publisher of BRIGANCE, *i-Ready*[®] combines a valid and reliable adaptive assessment with explicit, scaffolded personalized instruction. BRIGANCE and *i-Ready* together: all you need to meet legislative mandates and serve your students in the best way possible.



Inventory of Early Development III

Assess specific strengths and needs and inform instruction in key developmental domains: physical development, language development, academic skills/cognitive development, daily living skills, and social-emotional development.



Transition Skills Inventory 2 (TSI 2) and Transition Skills Activities 2 (TSA 2)

Support each student in determining their own path after high school, assess progress toward transition goals in the skill areas identified by IDEA Indicator 13, and deliver instruction with a digital resource of more than 100 instructional activities. Together, the new TSI 2 and the TSA 2 provide a comprehensive set of tools to meet the needs of diverse learners as they develop skills to thrive as adults in their personal lives, workplaces, and communities.



i-Ready

Assess and teach reading and mathematics skills with this integrated blended learning program that connects *i-Ready* assessment data to personalized learning and teacher-led instruction.

