

2021 Evaluation and Management Changes: New Prolonged Services Code

A major component of the 2021 Evaluation and Management (E/M) changes is the introduction of CPT ® code 99417 and HCPCS code G2212 effective January 1st, 2021. Both codes reflect a “prolonged office or other evaluation and management services that requires at least 15 minutes or more of total time either with OR without direct patient contact on the date of the primary E&M service (either CPT® codes 99205 or 99215)”.

CPT ® Code Description for 99417

99417-Prolonged office or other outpatient evaluation and management service(s) (beyond the total time of the primary procedure which has been selected using total time), requiring total time with or without direct patient contact beyond the usual service, on the date of the primary service; each 15 minutes (List separately in addition to codes 99205, 99215 for office or other outpatient Evaluation and Management services.)

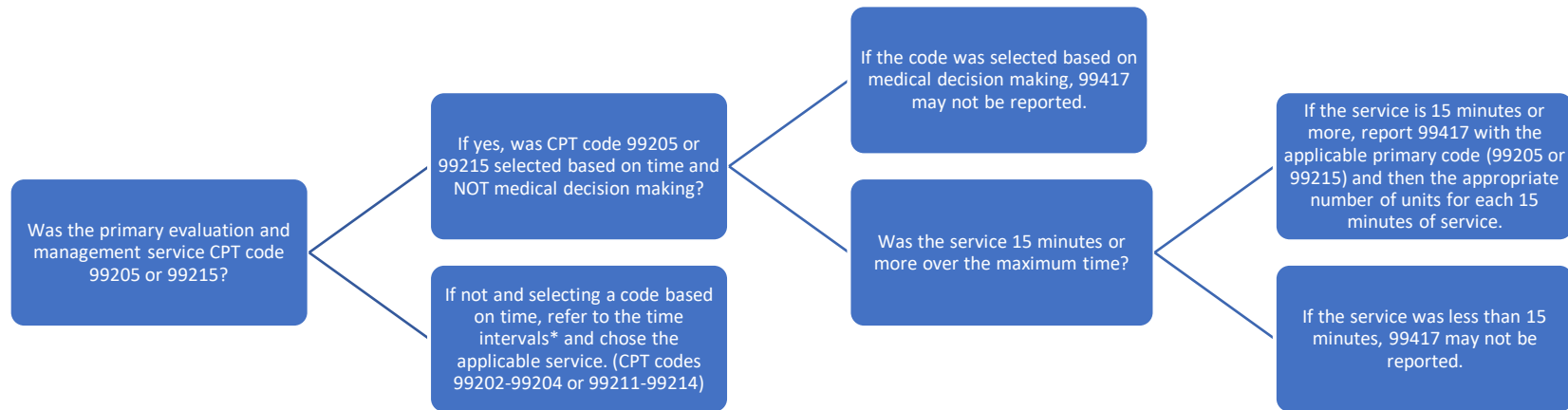
CPT ® 99417 Code Reporting

CPT ® code 99417 may only be reported in conjunction with 99205 or 99215 if the codes were selected based on the time alone and not medical decision making. A service of less than 15 minutes should not be reported.

Total Duration of a New Patient Office or Other Outpatient Level 5 Service (99205)		Total Duration of an Established Patient Office or Other Outpatient Level 5 Service (99215)	
Time	Codes	Time	Codes
Less than 75 minutes	Not reported	Less than 55 minutes	Not reported
75-89 minutes	99205 and 99417 (1x)	55-69 minutes	99215 and 99417 (1x)
90-104 minutes	99205 and 99417 (2x)	70-84 minutes	99215 and 99417 (2x)
105 or more	99205 and 99417 (3x or more for each additional 15 min)	85 or more	99215 and 99417 (3x or more for each additional 15 minutes)

CPT Copyright 2020 American Medical Association. All rights reserved.
CPT® is a registered trademark of the American Medical Association."

Decision Tree for CPT Code 99417



Reporting Example

A physician spends 84 minutes with a patient on the date of an office or other outpatient visit.

*CPT Copyright 2020 American Medical Association. All rights reserved.
CPT® is a registered trademark of the American Medical Association."*

Minutes	Code Reported	Notes
54	99215	40-54 minutes of total time is spent on the date of the encounter; report 99215 once to account for the maximum number of minutes.
15	99417	Report 2 units of 99417 for each additional 15- minute increment.
15	99417	
84	Total Minutes	

Disclaimer: The above illustration is based on the example provided in the “CPT® Evaluation and Management (E/M) Office or Other Outpatient (99202-99215) and Prolonged Services (99354, 99355, 99356, 99417) Code and Guideline Changes.”

Additional Changes to Prolonged Services Codes

There have also been amendments to the guidelines for other prolonged services codes 99354-99357 and 99358-99359.

Since CPT code 99417 was created to describe a 15-minute prolonged office or other evaluation and management services (with OR without direct patient contact), CPT codes 99354 and 99358 can no longer be reported with CPT codes 99201-99215 in 2021.

If CPT codes 99202-99204 and 99211-99214 are chosen based on time (“[2021 Evaluation and Management Changes: Selecting a Code Based on Time](#)”), the E&M service would be selected based on the appropriate time intervals. If a prolonged service occurs past the intervals for 99205 and 99215, then CPT code 99417 would be reported for each 15-minute unit of service.

Resource

[CPT® Evaluation and Management \(E/M\) Office or Other Outpatient \(99202-99215\) and Prolonged Services \(99354, 99355, 99356, 99417\) Code and Guideline Changes](#)

*CPT Copyright 2020 American Medical Association. All rights reserved.
CPT® is a registered trademark of the American Medical Association."*