

TRANSFORMING CANCER CARE WITH PATIENT-CENTERED STANDARDS

ASCO Certified is a certification powered by ASCO-COA Oncology Medical Home (OMH) practice standards. The program certifies oncology group practices and health systems that meet a single set of comprehensive oncology care standards.

Transforming Cancer Care

Cancer care is rapidly evolving with a need for standardization and consistency using a single-set of evidence-based standards for high-quality care while striving to reduce the administrative burden for all cancer care delivery stakeholders.

The ASCO-COA standards are peer-reviewed, published practice standards developed by a multidisciplinary panel of clinicians, health system administrators, and patient advocates. The standards are designed around patient needs, aiming to increase care coordination, improve access to care, enhance overall quality, and reduce costs.



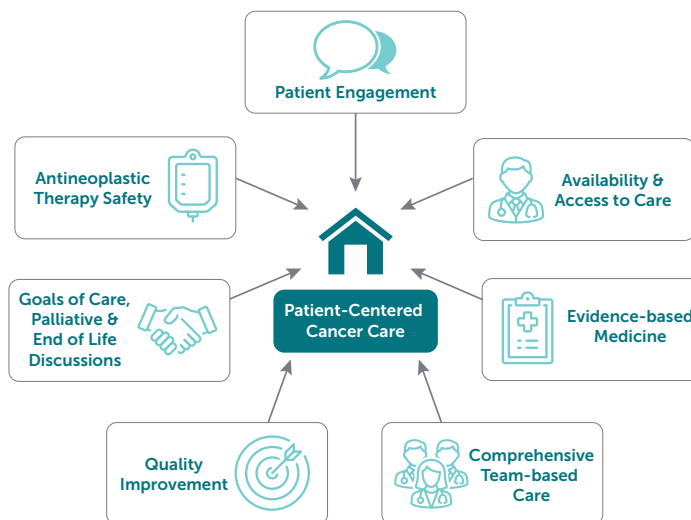
**How to Achieve ASCO
Certified Recognition**

Contact us at:
ascocertified@asco.org or scan the QR code to learn more.



Seven Delivery Focus Areas of Patient-Centered Cancer Care

- ▶ Patient Engagement
- ▶ Availability and Access to Care
- ▶ Evidence-based Medicine
- ▶ Comprehensive Team-based Care
- ▶ Quality Improvement
- ▶ Goals of Care, Palliative and End of Life Discussions
- ▶ Antineoplastic Therapy Safety



Each domain aims to establish alignment on the elements needed to deliver patient-centered, high-quality cancer care and achieve broad consensus among all stakeholders on what patients with cancer should receive from their care teams.

Elevating Cancer Care Standards

ASCO Certified impacts patient care through objectively measuring a comprehensive oncology care delivery model. During an early adopters' program, community, hospital, academic, and rural oncology practices participated in the ASCO Certified program.

Data from the pilot supports that certification can:

1. Improve the patient experience
2. Help transform patient care
3. Reduce utilization of the care delivery system
4. Create enhanced team alignment
5. Serve as preparation for payer value-based care delivery models

Results from Pilot Survey

