

Impact Report:

Discover How Using Gale's Digital Humanities Tool Is Making New Inroads into Research

This Gale-CLGBTH Fellow Is Tracing the History of Trans-masculine Community Building



Elio Colavito

Doctoral Student, History,
University of Toronto, Canada
Gale-CLGBTH Non-Residential Fellowship

MEET THE SCHOLAR

As one of five researchers awarded a fellowship from Gale and the Committee on LGBT History (CLGBTH) in 2022, Elio Colavito used Gale's digital humanities tools to trace a history of trans-masculine mutual aid, activism, and community with ArcGIS StoryMaps, a digital mapping software. Colavito's project, "Mapping Transtopia: Trans-Masculine Mutual Aid and Community Formation, 1960-2005," retells the history of trans-masculine resource sharing and community care by focusing on and mapping out the various ways that trans-masculine people built infrastructures for living and surviving.

All Gale-CLGBTH Non-Residential Fellowship recipients were granted access to Gale's *Archives of Sexuality and Gender* and *Gale Digital Scholar Lab* (the *Lab*) for a six-month period of research. *Archives of Sexuality and Gender* is the largest historical collection available in support of the knowledge of gender studies and sexuality, spanning from the sixteenth to the twentieth century. The *Lab* is a cloud-based digital humanities tool that helps researchers tell impactful visual stories with data from Gale's archives.

Fellows received training on how to use the text and data mining tools available in the *Lab* to explore *Archives of Sexuality and Gender* and advance their work using digital humanities methods. Read on to see how Colavito used this powerful cloud-based platform to run meaningful analyses using digital humanities tools and quickly and efficiently map out community trends over time.

Impact Report:

Discover How Using Gale's Digital Humanities Tool Is Making New Inroads into Research

F2M Column

Everything you always wanted to know about F2Ms But were afraid to ask.

“Andy”

Transgender Tapestry's editress tells me that IFGE is getting more phone inquiries from and about F2Ms every day, and asked me if I might want to answer some of the more frequently asked questions in my column. So without further ado:

What does the term female-to-male (a.k.a. FTM and/or F2M) mean?

Female-to-male simply refers to the direction that a transgendered person is going in. Whether they are changing their sex or simply cross-dressing, all female-to-males were either born in female bodies or were born intersexed and raised female. Until relatively recently (partly due to the fact that F2M crossdressers could pass unnoticed by society and that sex reassignment surgery for F2M was less successful), almost all gender community and media attention was focused on male-to-female transsexuals and crossdressers, to the extent that many people did not even know that female-to-males existed.

Why do some people born female identify as F2M?

That's a big question with as many answers as there are individual F2Ms. But, generally speaking, a person born female identifies as F2M because throughout all or part of their lives they have experienced what is known as gender dysphoria (the feeling that the sex which they were assigned at birth does not

match the gender that they feel they are internally). Some F2Ms are conscious that they are really boys/men inside throughout their lives and transition to male as soon as they are able to do so. Others feel male inside from an early age but then spend part of their lives in denial before finally coming to terms with their feelings and transitioning to become their true selves.

As to why F2Ms experience gender dysphoria in the first place, no one knows for sure, but modern studies lean strongly towards the theory that something happens in the womb which causes us to be born with male gender identities. Regardless of where gender dysphoria comes from, one thing is for sure: it is a lifelong condition and the only way to “cure” it is to change one's body to match how one feels inside.

Are all F2Ms transsexual?

No. There are F2M crossdressers and transgenderists, both lesbian and straight-identified, although little is known about them and their numbers appear far fewer than those of M2Fs, CIDs, and transgenderists.

How many F2Ms are there?

If we accept the common estimation that 1 in 50,000 [more modern estimates place this figure significantly higher at 1 in 10,000 and even 1 in 1000. - ed.] people are transsexual and that nearly half of all transsexuals are F2Ms, my best guess would be that out of 300 million Americans around 3500 would be F2Ms. This is only a very rough estimate however, and new F2Ms seem to be turning up every day.

Is it really possible for an F2M transsexual to transition to successfully living and passing as a man?

Yes! There are many happy, well-adjusted F2Ms out there with jobs, lovers, and families. In fact, it is very likely that you have met an F2M at some point in your life and not even realized it. Thanks to the magic of the masculinizing hormone therapy they receive, transitioned F2Ms pass so well no one can tell that they were not born male.

What are the physical effects of taking male hormones?

When a genetic female takes testosterone, for the first couple of years the experience is very much like going through male puberty: your voice cracks and drops significantly, your facial features coarsen and masculinize, your skin gets rougher, facial and body hair sprouts, your sex drive increases, and you will often break out in teenage acne on your face, chest, and back (this goes away after a while, though). Other effects more specific to the genetic female include the menstrual cycle stopping after a few months and the clitoris growing large enough to resemble an extremely small penis.

How do hormones affect emotions and personality?

During your first year on hormones you will probably experience some “teenage” mood swings, but your moods will level out as your body adjusts to its new hormonal environment. Mood swings aside, most of us usually feel much happier upon starting hormones, and, contrary to the stereotype that testosterone causes aggression, many guys report feeling a greater

continued on page 41

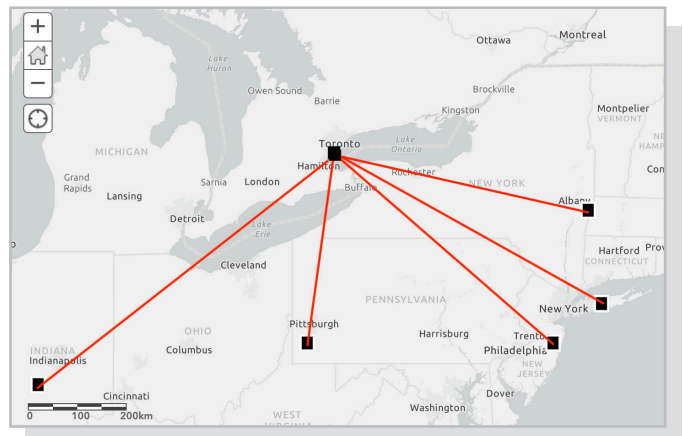
8 **Transgender Tapestry**

“F2M Column.” *Transgender Tapestry*, no. 79, Summer 1997, pp. 8+. *Archives of Sexuality and Gender*.

ADVANCING RESEARCH DISCOVERIES WITH GALE DIGITAL SCHOLAR LAB

Without access to *Archives of Sexuality and Gender* and the robust capabilities of *Gale Digital Scholar Lab*, Colavito's research would have required several trips, hundreds of hours of manual research, and thousands of dollars. With Gale's powerful search tools, they were able to save time through streamlined access to thousands of documents, all housed in a single online research environment. This helped Colavito reinvest their time in a more productive manner, allowing them to focus on writing their dissertation.

The *Archives of Sexuality and Gender* gave Colavito ample material to construct their map, yielding 2,500 related results, and empowered them to quickly move from the exploration stage of their research to identifying and understanding broader trends. Through the *Archives of Sexuality and Gender*, Colavito



One of the map drafts created by Colavito on ArcGIS StoryMaps.

was able to access the National Transgender Library Collection, Allan Bérubé Papers, Jim Kepner Papers, and files from the Lesbian Herstory Archives.

“Many of the letters available in the collections detail the mutual aid, resource sharing, peer support, and organizing efforts of prolific trans-masculine activists and community members,” shares Colavito. “In conversation with one another, they chart the mutual aid and resource sharing networks between trans men from across Canada and the United States from the 1970s to the early 2000s.”

Helped by the *Lab's* powerful capabilities, Colavito was then able to make significant discoveries that helped them to better understand how trans-masculine people used the gay and lesbian press. Colavito could demonstrate the geographic footprint of these letters by creating a digital map on ArcGIS StoryMaps, a digital mapping and storytelling platform.

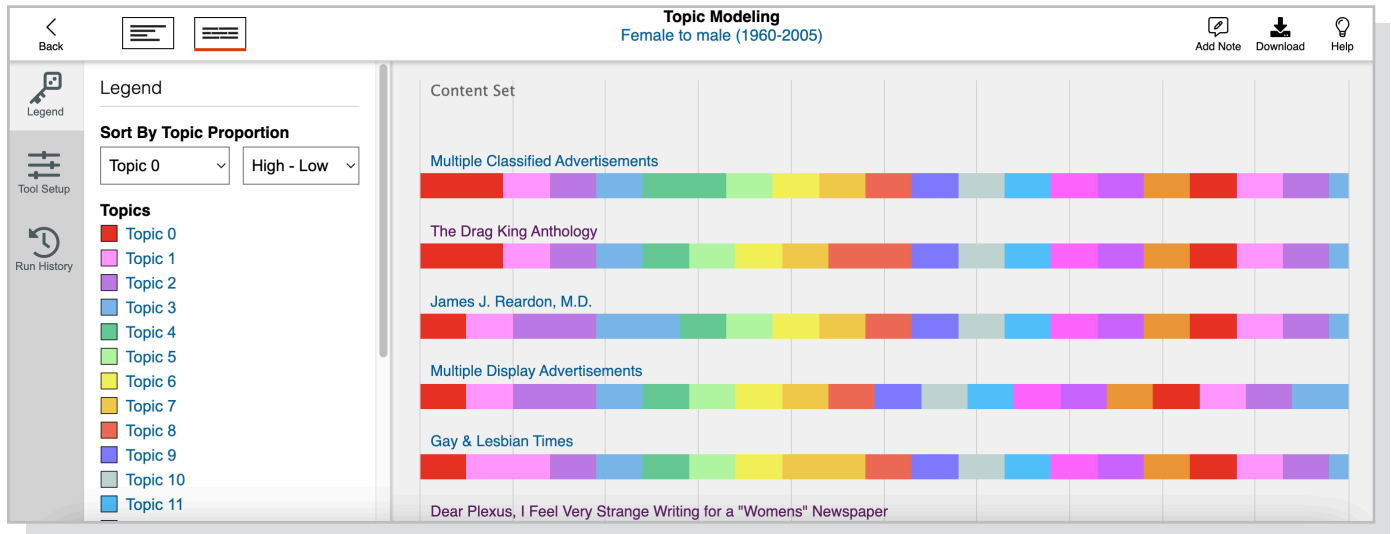
“The map traces these letters from sender to sender and city to city to illustrate the vastness and complexity of late 20th-century trans-masculine community building, resource sharing, and identity making,” Colavito explains. “This digital map serves as a digital humanities and public history approach to historical research and knowledge sharing.”

“I ... applied for the fellowship because of the potential to use *Gale Digital Scholar Lab*. Access to Gale's materials and software was an exciting opportunity to develop proficiency as a digital public scholar, historian, and trans studies researcher.”



Impact Report:

Discover How Using Gale's Digital Humanities Tool Is Making New Inroads into Research



Topic modeling tool used by Colavito to help inform their organization of themes in the StoryMap.

USING THE TOOLS IN THE LAB

As an instructor, historian, and researcher, Colavito sees tremendous power in the *Lab*'s suite of tools.

"The *Lab* was crucial to quickly sorting through documents with the keywords FTM, F2M, and female-to-male, which brought back 1,500 hits," Colavito says. "These documents had significant overlap in content and scope, and *Gale Digital Scholar Lab* aided me in finding trends amongst them."

This included separating results by time and place, helping Colavito easily group documents. They also cite the top modeling and named entity recognition tools as having significant potential for fellow researchers and students.

"I will continue to use both of these platforms as a researcher and a teacher," Colavito remarks. "They completely change the user experience, and therefore the learning and research experiences."

"I used *Gale Digital Scholar Lab* to sort and filter my search results, which allowed me to organize my data very quickly," Colavito continues. "The topic modeling feature was particularly useful; it presented different sub-themes from the research, which ultimately helped me make choices about how I would organize the themes in my StoryMap."

"The Gale fellowship advanced my understanding of digital humanities research methods by introducing me to new data sorting and management tools."



Impact Report:

Discover How Using Gale's Digital Humanities Tool Is Making New Inroads into Research

The screenshot shows the 'Named Entity Recognition' tool interface for 'F2M (1960-2006)'. On the left, a legend lists various entity categories with checkboxes. The 'Person' category is checked. The main area displays a table of identified entities.

Entity	Category	Documents	Count
Chapter Tri-Ess	Person	13	26
Waltham	Person	19	24
Lynda Frank	Person	7	19
Steve	Person	8	18
Linda	Person	8	17
Eugene	Person	16	16
Frye	Person	1	15
Treff Sachsen	Person	7	14
Marseille	Person	7	14
Kirk	Person	3	14
Vanessa	Person	1	13

Named entity recognition tool used by Colavito to identify people across multiple documents.

NEW OPPORTUNITIES TO THINK ABOUT HISTORICAL SOURCES

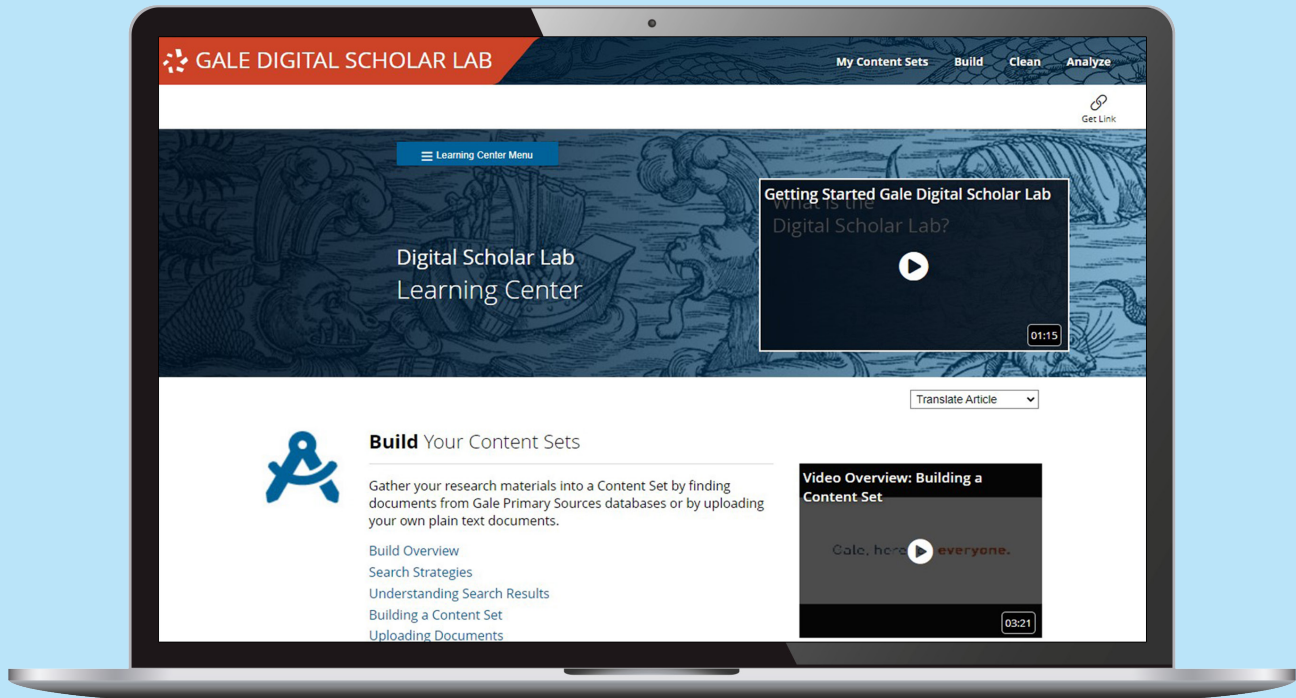
Reflecting on their experience as a Gale-CLGBTH Fellow, Colavito says, "I had a really wonderful experience at every point of this process. The training was fantastic, and Gale was amazing at helping me find opportunities to showcase this important work."

Through this experience, Colavito had the opportunity to think about historical sources in a new and innovative way. "I do not think that my research results could have been the same without the help of *Gale Digital Scholar Lab*."

"This fellowship made me a more curious scholar and advanced digital humanities specialist," Colavito shares. "Most importantly, the *Lab* made the process of sorting through such a high volume of sources fun and exciting. This is a fantastic fellowship opportunity, and I would recommend it to any scholar."

"*Gale Digital Scholar Lab* tools brought this to the foreground, allowing me to think about the utility of visibility-focused trans writing in the context of community and resource building. My digital humanities skills have been entirely developed outside of my program of study."





Get an Inside Look at Powerful Research Tools

Want to learn more about the resources Colavito used to enhance their research and develop their digital humanities skill set?

Discover the possibilities of *Gale Digital Scholar Lab* at gale.com/digital-scholar-lab

Find more information about *Archives of Sexuality and Gender* at gale.com/primary-sources/archives-of-sexuality-and-gender

Interested in learning more about the CLGBTH?

Find more details about the Committee on LGBT History (CLGBTH), including the society's initiatives and events, at clgbthistory.org