



CE

**CONSTRUCTION EQUIPMENT
EXCAVATOR BUCKET LINEUP**

KX SERIES / U SERIES





CONSTRUCTION EQUIPMENT EXCAVATOR BUCKET LINE UP

Your reputation is only as good as the work you do. And your excavator is only as good as the attachment on the end of the dipper. Trust Kubota's range of performance-matched excavator buckets and attachments to help you get the work done to your high standards.

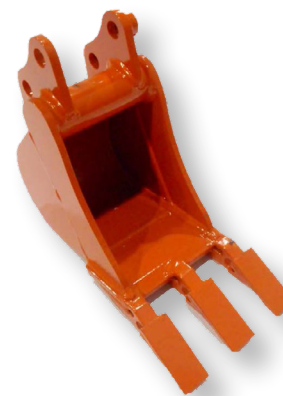
With Kubota's complete construction solutions, you get tough, durable equipment that works as hard as you do. Everything from excavators to loaders to our range of attachments is built to help Canadian construction companies do what they do best: build Canada. It's why we've earned our own reputation for reliability, and we're proud to put that commitment to the test day in and day out.



This lightweight, high performance excavator features a dynamic Kubota diesel engine and a pedal-operated boom swing.

K008-5 / U10-5 // PIN ON BUCKETS

- Kubota offers a wide range of attachments and buckets for its machines, varying from trenching and ditching buckets to hydraulic breaker adapters.



TRENCHING BUCKETS

Whole Good #	Width	Heaped Capacity (Cubic Feet)	Weight	Number of Teeth	Calculated Breakout Force (lbf)
K9872C-3	8"	0.27	45	3	2778
K9873C-3	10"	0.35	41	3	
K9874C-3	12"	0.46	45	4	
K9867C-3	14"	0.57	56	5	

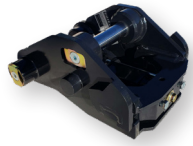


DITCHING BUCKETS

Whole Good #	Width	Heaped Capacity (Cubic Feet)	Calculated Breakout Force (lbf)
K9874CC-3	12"	0.59	3455
K9867CC-3	14"	0.7	

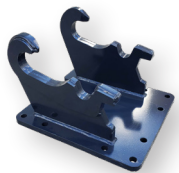
K008-5 / U10-5 // PREMIUM WEDGE COUPLER

MECHANICAL QUICK ATTACH COUPLER



- The Premium Wedge Mechanical Quick Attach Coupler makes bucket changes quick and efficient. This premium coupler lets operators mechanically reverse trenching and ditching buckets.
- Wholegood number K0100

HYDRAULIC BREAKER ADAPTOR



- A KXB310QA hydraulic breaker can be fitted to the K008-5/U10-5 to break up rocks, concrete, and construction materials by simply attaching a K0100KXB adapter at the end of the arm.

TRENCHING AND DITCHING BUCKETS

- Kubota offers a range of mechanical reversible trenching and ditching buckets for digging.

Whole Good #	Width	Heaped Capacity (Cubic Feet)	Weight (lbs)	Number of Teeth	Calculated Breakout Force (lbf)
K0140T	12"	0.82	81.1	3	1998
K0130D	24"	1.89	92.7		2400



INVERTED AND REVERSIBLE EAR KIT

- Ear kits modify buckets and attachments that are not offered by Kubota, so they're compatible with Kubota Mechanical Quick Attach Couplers. The inverted ear kit is specifically designed to fit attachments such as breakers, rake, tooth/frost ripper and vibratory compactors.
- Wholegood number K0100EARR Reversible Ear
- Wholegood number K0100EAR Inverted Ear



REVERSIBLE EAR KIT



INVERTED EAR KIT

TOOTH/FROST RIPPER

- Kubota provides robust ripper attachments to break up soil or frost and dig up stumps or roots.
- Wholegood number K0160RP



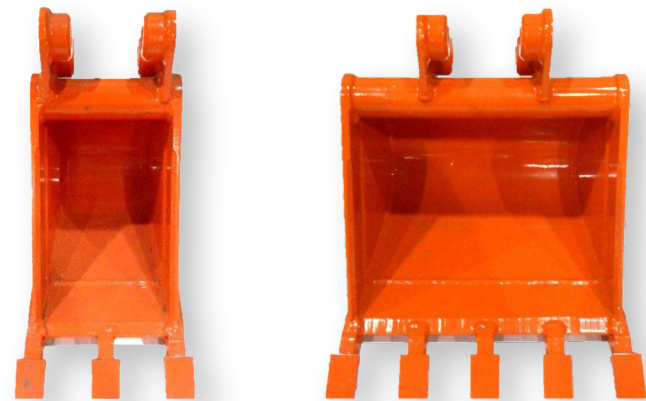
The U17-4 zero-tail swing compact excavator has excellent stability and balance while the KX018-4 offers powerful bucket digging force and can access small spaces.

U17 & KX018-4 // PIN ON BUCKETS

- Pin On Trenching buckets are available, while Pin On Ditching buckets are currently unavailable. There is no thumb compatibility with Pin On buckets.

TRENCHING BUCKETS

Whole Good #	Width	Heaped Capacity (Cubic Feet)	Weight (lbs)	Number of Teeth	Calculated Breakout Force (lbf)
K9901C	8"	0.51	54	3	3564 (U17) 5054 (KX018-4)
K9910C	10"	0.7	59	3	
K9911C	12"	0.89	65	4	
K9912C	16"	1.27	83	5	
K9913C	18"	1.49	90	5	



U17 & KX018-4 // STANDARD WEDGE COUPLER

MECHANICAL QUICK ATTACH COUPLER



- The Standard Wedge Mechanical Quick Attach Coupler makes bucket changes quick and efficient. The Standard coupler keeps the bucket close to the dipper end, so there's no loss of breakout force.
- Wholegood number K9900C3

HYDRAULIC BREAKER ADAPTOR



- A KXB360QA hydraulic breaker can be fitted to the U17 and KX018-4 to break up rocks, concrete, and construction materials by simply adding a K9900KXBF adapter to the end of the arm.

HYDRAULIC THUMB

- Kubota Hydraulic Thumbs make it easy for operators to pick up and move tree branches, concrete, rocks, and other debris from work sites.
- Wholegood number K0122 plus K0120 spacers

EAR KIT



- Ear kits modify buckets and attachments that are not offered by Kubota, so they are compatible with Kubota Mechanical Quick Attach Couplers.
- Wholegood number K9900EAR

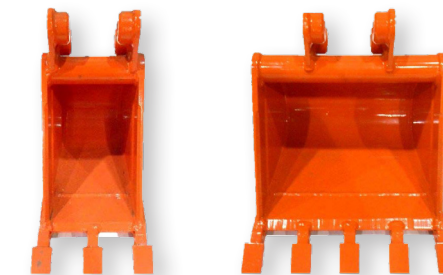
DITCHING BUCKET

Whole Good #	Width	Heaped Capacity (Cubic Feet)	Weight (lbs)	Calculated Breakout Force (lbf)
K9914C	24"	2.03	90	4247 (U17) 6020 (KX018-4)



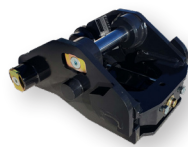
TRENCHING BUCKET

Whole Good #	Width	Heaped Capacity (Cubic Feet)	Weight (lbs)	Number of Teeth	Calculated Breakout Force (lbf)
K9910QC	10"	0.7	59	3	3482 (U17)
K9911QC	12"	0.89	65	4	
K9912QC	16"	1.27	83	5	4936 (KX018-4)
K9913QC	18"	1.49	90	5	



U17 & KX018-4 // PREMIUM WEDGE COUPLER

MECHANICAL QUICK ATTACH COUPLER



- The Premium Wedge Mechanical Quick Attach Coupler makes bucket changes quick and efficient. This premium coupler also lets operators mechanically reverse trenching and ditching buckets.
- Wholegood number K0101

TRENCHING AND DITCHING BUCKETS



- Kubota offers a range of mechanical reversible trenching and ditching buckets for digging.

TRENCHING BUCKET

Whole Good #	Width	Heaped Capacity (Cubic Feet)	Weight (lbs)	Number of Teeth	Calculated Breakout Force (lbf)
K0140T	12"	0.82	81.1	3	2164 (U17)
K0141T	18"	1.35	103.2	4	3066 (KX018-4)

DITCHING BUCKET

Whole Good #	Width	Heaped Capacity (Cubic Feet)	Weight (lbs)	Calculated Breakout Force (lbf)
K0130D	24"	1.89	92.7	2164 (U17)
K0131D	30"	2.43	106.4	3066 (KX018-4)

INVERTED AND REVERSABLE EAR KIT

- Ear kits modify buckets and attachments that are not offered by Kubota, so they are compatible with Kubota Mechanical Quick Attach Couplers. The inverted ear kit is specifically designed to fit attachments such as breakers, rake, tooth/frost ripper and vibratory compactors.
- Wholegood number K0100EAR Inverted Ear
- Wholegood number K0100EARR Reversible Ear



REVERSIBLE EAR KIT



INVERTED EAR KIT

HYDRAULIC BREAKER ADAPTOR

- A KXB360QA hydraulic breaker can be fitted to the U17 and KX018-4 to break up rocks, concrete, and construction materials by simply attaching a K0102KXB adapter to the end of the arm.

TOOTH/FROST RIPPER

- Kubota provides robust ripper attachments to break up soil or frost and dig up stumps or roots.
- Wholegood number K0160RP



HYDRAULIC THUMB

- Kubota Hydraulic Thumbs make it easy for operators to pick up and move tree branches, concrete, rocks, and other debris from work sites.
- Wholegood number K0122



Powered by a Kubota Tier-4 diesel, the compact, tight-tail swing U27-4 takes on challenging jobs that big excavators can't handle.

U27-4 // STANDARD WEDGE COUPLER

MECHANICAL QUICK ATTACH COUPLER



- The Standard Wedge Mechanical Quick Attach Coupler makes bucket changes quick and efficient. The Standard coupler keeps the bucket close to the dipper end, so there's no loss of breakout force.
- Wholegood number K7250

HYDRAULIC THUMB

- Kubota Hydraulic Thumbs make it easy for operators to pick up and move tree branches, concrete, rocks, and other debris from work sites.
- Wholegood number K7251

HYDRAULIC BREAKER ADAPTOR



- A KXB360QA hydraulic breaker can be fitted to the U27-4 to break up rocks, concrete, and construction materials by simply adding a K9970KBF adapter at the end of the arm.

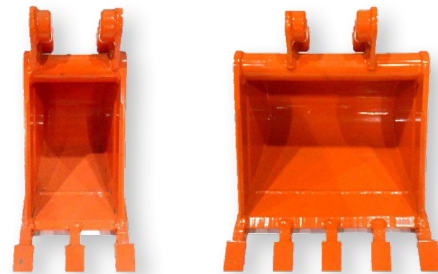
EAR KIT



- Ear kits modify buckets and attachments that are not offered by Kubota, so they are compatible with Kubota Mechanical Quick Attach Couplers.
- Wholegood number K9970EAR

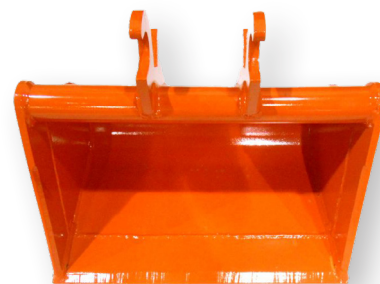
TRENCHING BUCKET

Whole Good #	Width	Heaped Capacity (Cubic Feet)	Weight (lbs)	Number of Teeth	Calculated Breakout Force (lbf)
K9970QC	12"	1.3	82	3	8394
K9971QC	16"	1.8	105	4	
K9972QC	18"	2.08	115	4	
K9973QC	24"	2.95	135	5	



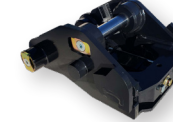
DITCHING BUCKET

Whole Good #	Width	Heaped Capacity (Cubic Feet)	Weight (lbs)	Calculated Breakout Force (lbf)
K9974QC	30"	3.8	120	9953
K9975QC	36"	4.2	140	



U27-4 // PREMIUM WEDGE COUPLER

MECHANICAL QUICK ATTACH COUPLER



- The Premium Wedge Mechanical Quick Attach Coupler makes bucket changes quick and efficient. This premium coupler also lets operators mechanically reverse trenching and ditching buckets.
- Wholegood number K0200

INVERTED AND REVERSABLE EAR KIT

- Ear kits modify buckets and attachments that are not offered by Kubota, so they are compatible with Kubota Mechanical Quick Attach Couplers. The inverted ear kit is specifically designed to fit attachments such as breakers, rake, tooth/frost ripper and vibratory compactors.
- Wholegood number K0300EAR Inverted Ear
- Wholegood number K0300EARR Reversible Ear



REVERSIBLE EAR KIT

INVERTED EAR KIT

TRENCHING AND DITCHING BUCKETS

- Kubota offers a range of mechanical reversible trenching and ditching buckets for digging with hooks, so chains can be attached to place objects.

TRENCHING BUCKETS

Whole Good #	Width	Heaped Capacity (Cubic Feet)	Weight (lbs)	Number of Teeth	Calculated Breakout Force (lbf)
K0240T	14"	1.49	148.2	3	5851
K0241T	18"	2.05	168.7	4	



HYDRAULIC THUMB



- Kubota Hydraulic Thumbs make it easy for operators to pick up and move tree branches, concrete, rocks, and other debris from work sites.
- Wholegood number K0220

HYDRAULIC BREAKER ADAPTOR



- A KXB460QA hydraulic breaker can be fitted to the U27-4 to break up rocks, concrete, and construction materials by simply attaching a K0200KXB adapter at the end of the arm.

TOOTH/FROST RIPPER



- Kubota provides robust ripper attachments to break up soil or frost and dig up stumps or roots.
- Wholegood number K0260RP

ROOT RAKE



- The Root Rake attachment can be used to sift rocks and soil, remove shrubs, reduce overgrowth, and manage crops.
- Wholegood number K0250RK

DITCHING BUCKETS

Whole Good #	Width	Heaped Capacity (Cubic Feet)	Weight (lbs)	Calculated Breakout Force (lbf)
K0230D	36"	4.77	205.9	5851





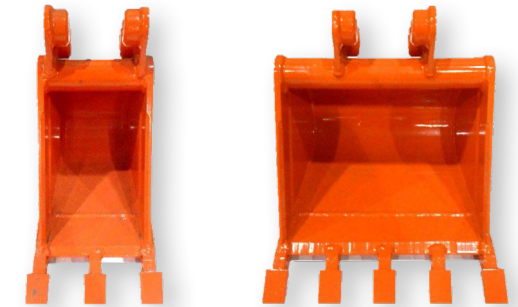
Rugged, reliable, and highly maneuverable, the KX030-4 compact excavator has the deepest digging depth and highest power in its class.

KX030-4 // PIN ON BUCKETS

- Kubota offers a wide range of attachments and buckets for its machines, varying from trenching and ditching buckets to hydraulic breaker adapters.

TRENCHING BUCKETS

Whole Good #	Width	Heaped Capacity (Cubic Feet)	Weight (lbs)	Number of Teeth	Calculated Breakout Force (lbf)
K9830C	12"	2.1	162	3	7198
K9831C	16"	3.1	187	4	
K9832C	18"	3.5	197	4	
K9833C	24"	3.9	217	5	



DITCHING BUCKETS

Whole Good #	Width	Heaped Capacity (Cubic Feet)	Weight (lbs)	Calculated Breakout Force (lbf)
K9835C	30"	5	187	7198
K9836C	36"	6	252	



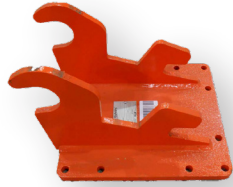
KX030-4 // STANDARD WEDGE COUPLER

MECHANICAL QUICK ATTACH COUPLER



- The Standard Wedge Mechanical Quick Attach Coupler makes bucket changes quick and efficient. The Standard coupler keeps the bucket close to the dipper end, so you don't lose breakout force.
- Wholegood number K9930C3

HYDRAULIC BREAKER ADAPTOR



- A KXB460QA hydraulic breaker can be fitted to the KX030-4 to break up rocks, concrete, and construction materials by simply attaching a K9930KXBF adapter at the end of the arm.

HYDRAULIC THUMB

- Kubota Hydraulic Thumbs make it easy for operators to pick up and move tree branches, concrete, rocks, and other debris from work sites.
- Wholegood number K7902C

EAR KIT



- Ear kits modify buckets and attachments that are not offered by Kubota, so they are compatible with Kubota Mechanical Quick Attach Couplers.
- Wholegood number K9920EAR

TRENCHING AND DITCHING BUCKETS

TRENCHING BUCKET

Whole Good #	Width	Heaped Capacity (Cubic Feet)	Weight (lbs)	Number of Teeth	Calculated Breakout Force (lbf)
K9930QC	12"	2.1	155	3	6730
K9931QC	16"	3.1	180	4	
K9932QC	18"	3.5	190	4	
K9933QC	24"	3.9	210	5	
K9934QC	30"	5.1	240	6	



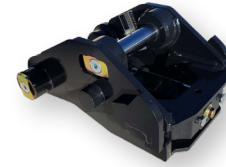
DITCHING BUCKET

Whole Good #	Width	Heaped Capacity (Cubic Feet)	Weight (lbs)	Calculated Breakout Force (lbf)
K9935QC	30"	5	210	8040
K9936QC	36"	6	245	



KX030-4 // PREMIUM WEDGE COUPLER

MECHANICAL QUICK ATTACH COUPLER



- The Premium Wedge Mechanical Quick Attach Coupler makes bucket changes quick and efficient. This premium coupler lets operators mechanically reverse trenching and ditching buckets.
- Wholegood number K0300

HYDRAULIC THUMB



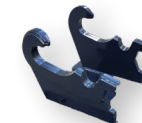
- Kubota Hydraulic Thumbs make it easy for operators to pick up and move tree branches, concrete, rocks, and other debris from work sites.
- Wholegood number K0321

INVERTED AND REVERSABLE EAR KIT

- Ear kits modify buckets and attachments that are not offered by Kubota, so they are compatible with Kubota Mechanical Quick Attach Couplers. The inverted ear kit is specifically designed to fit attachments such as breakers, rake, tooth/frost ripper and vibratory compactors.
- Wholegood number K0300EAR Inverted Ear
- Wholegood number K0300EARR Reversible Ear



REVERSIBLE EAR KIT



INVERTED EAR KIT

HYDRAULIC QUICK ATTACH COUPLER

- Kubota Hydraulic Quick Attach Couplers allow operators to hook up or remove attachments at the flip of a switch, without leaving the cab.



HYDRAULIC QUICK ATTACH COUPLER CONVERSION KIT



- Convert the Mechanical Quick Attach Coupler to hydraulic with the Hydraulic Quick Attach Coupler Conversion kit.

HYDRAULIC BREAKER ADAPTOR



- A KXB460QA hydraulic breaker can be fitted to the KX030-4 to break up rocks, concrete, and construction materials by simply adding a K0300KXB adapter at the end of the arm.

KX030-4 // PREMIUM WEDGE COUPLER

ROOT RAKE



- The Root Rake attachment can be used to sift rocks and soil, remove shrubs, reduce overgrowth, and manage crops.
- Wholegood number K0350RK

TOOTH/FROST RIPPER



- Kubota provides robust ripper attachments to break up soil or frost and dig up stumps or roots.
- Wholegood number K0360RP

TRENCHING AND DITCHING BUCKETS

- Kubota offers a range of mechanical reversible trenching and ditching buckets for digging with hooks so chains can be attached to place objects.

TRENCHING BUCKETS

Whole Good #	Width	Heaped Capacity (Cubic Feet)	Weight (lbs)	Number of Teeth	Calculated Breakout Force (lbf)
K0340T	14"	1.9	169.1	3	7707
K0341IT	24"	3.87	250.4	5	



DITCHING BUCKETS

Whole Good #	Width	Heaped Capacity (Cubic Feet)	Weight (lbs)	Calculated Breakout Force (lbf)
K0332D	36"	6.02	267.4	7707



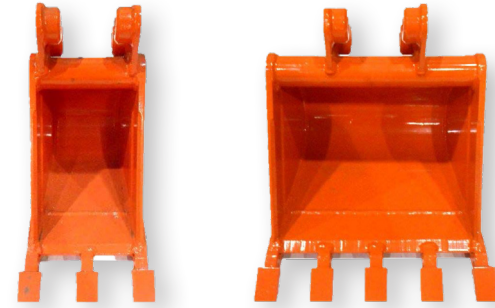
The powerful tight tail-swing U35-4 is highly versatile and well-suited for a range of applications. The KX033-4 mini-excavator delivers outstanding bucket breakout force and has the lifting capacity of a much larger machine.

U35-4 & KX033-4 // PIN ON BUCKETS

- Kubota offers a wide range of attachments and buckets for its machines, varying from trenching and ditching buckets to hydraulic breaker adapters.

TRENCHING BUCKETS

Whole Good #	Width	Heaped Capacity (Cubic Feet)	Weight	Number of Teeth	Calculated Breakout Force (lbf)
K9830C	12"	2.1	162	3	6320 (U35-4)
K9831C	16"	3.1	187	4	
K9832C	18"	3.5	197	4	6600 (KX033-4)
K9833C	24"	3.9	217	5	



DITCHING BUCKETS

Whole Good #	Width	Heaped Capacity (Cubic Feet)	Calculated Breakout Force (lbf)
K9835C	30"	187	7535 (U35-4)
K9836C	36"	252	7870 (KX033-4)



U35-4 & KX033-4 // STANDARD WEDGE COUPLER

MECHANICAL QUICK ATTACH COUPLER



- The Standard Wedge Mechanical Quick Attach Coupler makes bucket changes quick and efficient. The Standard coupler keeps the bucket close to the dipper end, so there's no loss of breakout force.
- Wholegood number K9930C3

HYDRAULIC THUMB

- Kubota Hydraulic Thumbs make it easy for operators to pick up and move tree branches, concrete, rocks, and other debris from work sites.
- Wholegood number K7902C (Mechanical QA)
- Wholegood number K7902H (Hydraulic QA)

DITCHING BUCKET

Whole Good #	Width	Heaped Capacity (Cubic Feet)	Weight (lbs)	Calculated Breakout Force (lbf)
K9935QC	30"	5	210	7059 (U35-4)
K9936QC	36"	6	245	7372 (KX033-4)



TRENCHING BUCKET

Whole Good #	Width	Heaped Capacity (Cubic Feet)	Weight (lbs)	Number of Teeth	Calculated Breakout Force (lbf)
K9930QC	12"	2.1	155	3	5909 (U35-4)
K9931QC	16"	3.1	180	4	
K9932QC	18"	3.5	190	4	6171 (KX033-4)
K9933QC	24"	3.9	210	5	
K9934QC	30"	5.1	240	6	



HYDRAULIC QUICK ATTACH COUPLER

- Kubota Hydraulic Quick Attach Couplers allow operators to hook up or remove attachments at the flip of a switch, without leaving the cab.
- Wholegood number K9930H & K9930HIKA



EAR KIT



- Ear kits modify buckets and attachments that are not offered by Kubota, so they are compatible with Kubota Mechanical Quick Attach Couplers.
- Wholegood number K9930EAR

TOOTH/FROST RIPPER



- Kubota provides robust ripper attachments to break up soil or frost and dig up stumps or roots.
- Wholegood number K9930FR

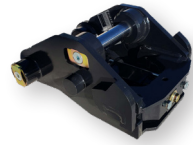
HYDRAULIC BREAKER ADAPTOR



- A KXB460QA hydraulic breaker can be fitted to the U35-4 and KX033-4 to break up rocks, concrete, and construction materials by simply attaching a K9930KXBF adapter at the end of the arm.

U35-4 & KX033-4 // PREMIUM WEDGE COUPLER

MECHANICAL QUICK ATTACH COUPLER



- The Premium Wedge Mechanical Quick Attach Coupler makes bucket changes quick and efficient. This premium coupler lets operators mechanically reverse trenching and ditching buckets.
- Wholegood number K0301

HYDRAULIC THUMB



- Kubota Hydraulic Thumbs make it easy for operators to pick up and move tree branches, concrete, rocks, and other debris from work sites.
- Wholegood number K0321

INVERTED AND REVERSABLE EAR KIT

- Ear kits modify buckets and attachments that are not offered by Kubota, so they are compatible with Kubota Mechanical Quick Attach Couplers. The inverted ear kit is specifically designed to fit attachments such as breakers, rake, tooth/frost ripper and vibratory compactors.
- Wholegood number K0300EAR Inverted Ear
- Wholegood number K0300EARR Reversible Ear



REVERSIBLE EAR KIT



INVERTED EAR KIT

HYDRAULIC QUICK ATTACH COUPLER

- Kubota Hydraulic Quick Attach Couplers allow operators to hook up or remove attachments at the flip of a switch, without leaving the cab.
- Wholegood numbers: K0311HC – KX033-4
K0312HC – U35-4

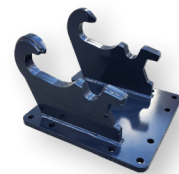


HYDRAULIC QUICK ATTACH COUPLER CONVERSION KIT



- Convert the Mechanical Quick Attach Coupler to hydraulic with the Hydraulic Quick Attach Coupler Conversion kit.
- Wholegood numbers: K0311HKIT – KX033-4
K0312HKIT – U35-4

HYDRAULIC BREAKER ADAPTER



- A KXB460QA hydraulic breaker can be fitted to the U35-4 and KX033-4 to break up rocks, concrete, and construction materials by simply attaching a K0300KXB adapter at the end of the arm.

U35-4 & KX033-4 // PREMIUM WEDGE COUPLER

TOOTH/FROST RIPPER



- Kubota provides robust ripper attachments to break up soil or frost and dig up stumps or roots.
- Wholegood number K0360RP

ROOT RAKE



- The Root Rake attachment can be used to sift rocks and soil, remove shrubs, reduce overgrowth, and manage crops.
- Wholegood number K0350RK

TRENCHING AND DITCHING BUCKETS

- Kubota offers a range of mechanical reversible trenching and ditching buckets for digging with hooks, so chains can be attached to place objects.

TRENCHING BUCKET

Whole Good #	Width	Heaped Capacity (Cubic Feet)	Weight (lbs)	Number of Teeth	Calculated Breakout Force (lbf)
K0340T	14"	1.9	169.1	3	7707 (U35-4)
K0341IT	24"	3.87	250.4	5	7520 (KX033-4)

DITCHING BUCKET

Whole Good #	Width	Heaped Capacity (Cubic Feet)	Weight (lbs)	Calculated Breakout Force (lbf)
K0332D	36"	6.02	267.4	7200 (U35-4)





This mini-excavator delivers high performance and superior strength while minimizing noise and emissions.

KX040-4 // STANDARD WEDGE COUPLER

MECHANICAL QUICK ATTACH COUPLER



- The Standard Wedge Mechanical Quick Attach Coupler makes bucket changes quick and efficient. The Standard coupler keeps the bucket close to the dipper end, so there's no loss of breakout force.
- Wholegood number K9930C3

HYDRAULIC QUICK ATTACH COUPLER

- Kubota Hydraulic Quick Attach Couplers allow operators to hook up or remove attachments at the flip of a switch, without leaving the cab.
- Wholegood number K9930H & K9930HIKA



HYDRAULIC THUMB

- Kubota Hydraulic Thumbs make it easy for operators to pick up and move tree branches, concrete, rocks, and other debris from work sites.
- Wholegood number K7902C (Mechanical QA)
- Wholegood number K7902H (Hydraulic QA)

EAR KIT



- Ear kits modify buckets and attachments that are not offered by Kubota, so they are compatible with Kubota Mechanical Quick Attach Couplers.
- Wholegood number K9930EAR

HYDRAULIC BREAKER ADAPTOR



- A KXB510QA or KXB560QA hydraulic breaker can be fitted to the KX040-4 to break up rocks, concrete, and construction materials by simply attaching a K9930KXBF adapter at the end of the arm.

TOOTH/FROST RIPPER

- Kubota provides robust ripper attachments to break up soil or frost and dig up stumps or roots.
- Wholegood number K9930FR



TRENCHING AND DITCHING BUCKETS

DITCHING & TILT DITCHING BUCKETS

Whole Good #	Width	Heaped Capacity (Cubic Feet)	Weight (lbs)	Calculated Breakout Force (lbf)
K9935QC	30"	5	210	7372
K9936QC	36"	6	245	
K9937QC	42"	7.2	228	
K9936QCT	36"	6	440	

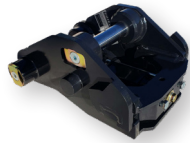
TRENCHING BUCKETS

Whole Good #	Width	Heaped Capacity (Cubic Feet)	Weight (lbs)	Number of Teeth	Calculated Breakout Force (lbf)
K9930QC	12"	2.1	155	3	6573
K9931QC	16"	3.1	180	4	
K9932QC	18"	3.5	190	4	
K9933QC	24"	3.9	210	5	
K9934QC	30"	5.1	240	6	



KX040-4 // PREMIUM WEDGE COUPLER

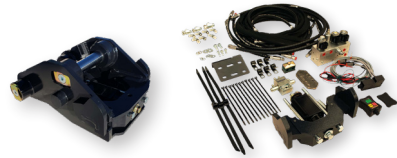
MECHANICAL QUICK ATTACH COUPLER



- The Premium Wedge Mechanical Quick Attach Coupler makes bucket changes quick and efficient. This premium coupler lets operators mechanically reverse trenching and ditching buckets.
- Wholegood number K0301

HYDRAULIC QUICK ATTACH COUPLER

- Kubota Hydraulic Quick Attach Couplers allow operators to hook up or remove attachments at the flip of a switch, without leaving the cab.
- Wholegood number K0313HC



HYDRAULIC THUMB



- Kubota Hydraulic Thumbs make it easy for operators to pick up and move tree branches, concrete, rocks, and other debris from work sites.
- Wholegood number K0323

HYDRAULIC QUICK ATTACH COUPLER CONVERSION KIT



- Convert the Mechanical Quick Attach Coupler to hydraulic with the Hydraulic Quick Attach Coupler Conversion kit.
- Wholegood number K0313HKIT

INVERTED AND REVERSABLE EAR KIT

- Ear kits modify buckets and attachments that are not offered by Kubota, so they are compatible with Kubota Mechanical Quick Attach Couplers. The inverted ear kit is specifically designed to fit attachments such as breakers, rake, tooth/frost ripper and vibratory compactors.
- Wholegood number K0300EAR Inverted Ear
- Wholegood number K0300EARR Reversible Ear

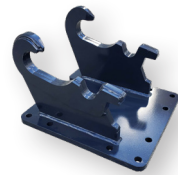


REVERSIBLE EAR KIT



INVERTED EAR KIT

HYDRAULIC BREAKER ADAPTOR



- A KXB510QA or KXB560QA hydraulic breaker can be fitted to the KX040-4 to break up rocks, concrete, and construction materials by simply attaching a K0302KXB adapter at the end of the arm.

TOOTH/FROST RIPPER



- Kubota provides robust ripper attachments to break up soil or frost and dig up stumps or roots.
- Wholegood number K0360RP

KX040-4 // PREMIUM WEDGE COUPLER

TRENCHING AND DITCHING BUCKETS

Kubota offers a range of mechanical reversible trenching and ditching buckets for digging with hooks, so chains can be attached to place objects.

TRENCHING BUCKETS

Whole Good #	Width	Heaped Capacity (Cubic Feet)	Weight (lbs)	Number of Teeth	Calculated Breakout Force (lbf)
K0343T	14"	2.26	197.8	3	7014
K0344T	24"	4.57	264.7	5	



DITCHING BUCKETS

Whole Good #	Width	Heaped Capacity (Cubic Feet)	Weight (lbs)	Calculated Breakout Force (lbf)
K0334D	42"	8.91	315.3	7014



ROOT RAKE

- The Root Rake attachment can be used to sift rocks and soil, remove shrubs, reduce overgrowth, and manage crops.
- Wholegood number K0351RK





The 4.8 ton, tight tail swing U48-5 is a versatile machine that can easily access small spaces.

U48-5 // STANDARD WEDGE COUPLER

MECHANICAL QUICK ATTACH COUPLER



- The Standard Wedge Mechanical Quick Attach Coupler makes bucket changes quick and efficient. The Standard coupler keeps the bucket close to the dipper end, so there's no loss of breakout force.
- Wholegood number K9940C3

HYDRAULIC THUMB

- Kubota Hydraulic Thumbs make it easy for operators to pick up and move tree branches, concrete, rocks, and other debris from work sites.
- Wholegood number K7905C (Mechanical QA) and K7905H (Hydraulic QA)

EAR KIT



- Ear kits modify buckets and attachments that are not offered by Kubota, so they are compatible with Kubota Mechanical Quick Attach Couplers.
- Wholegood number K9940EAR

TRENCHING AND DITCHING BUCKETS

TRENCHING BUCKETS

Whole Good #	Width	Heaped Capacity (Cubic Feet)	Weight (lbs)	Number of Teeth	Calculated Breakout Force (lbf)
K9940QC	12"	2.6	210	3	14565
K9941QC	16"	3.8	265	4	
K9942QC	18"	4.4	305	4	
K9943QC	24"	6.3	346	5	
K9944QC	30"	8.2	395	6	
K9945QC	36"	8.2	410	7	15195



HYDRAULIC QUICK ATTACH COUPLER

- Kubota Hydraulic Quick Attach Couplers allow operators to hook up or remove attachments at the flip of a switch, without leaving the cab.
- Wholegood number K9940H & K9940HIKA



TOOTH RIPPER



- Kubota provides robust ripper attachments to break up soil or frost and dig up stumps or roots.
- Wholegood number K9940FR

HYDRAULIC BREAKER ADAPTOR



- A KXB510QA or KXB560QA hydraulic breaker can be fitted to the U48-5 to break up rocks, concrete, and construction materials by simply attaching a K9940KXBF adapter at the end of the arm.

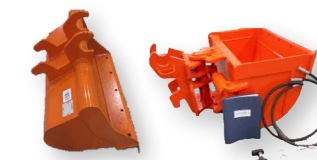
ROOT RAKE



- The Root Rake attachment can be used to sift rocks and soil, remove shrubs, reduce overgrowth, and manage crops.
- Wholegood number K9940LR

DITCHING & TILT DITCHING BUCKETS

Whole Good #	Width	Heaped Capacity (Cubic Feet)	Weight (lbs)	Calculated Breakout Force (lbf)
K9946QC	36"	7.8	270	16331
K9947QC	48"	8.7	350	16331
K9942QCT	42"	79.2	600	16148
K9948QCE	42"	7.9	335	16331



U48-5 // PREMIUM WEDGE COUPLER

MECHANICAL QUICK ATTACH COUPLER



- The Premium Wedge Mechanical Quick Attach Coupler makes bucket changes quick and efficient. This premium coupler lets operators mechanically reverse trenching and ditching buckets.
- Wholegood number K0302

HYDRAULIC QUICK ATTACH COUPLER

- Kubota Hydraulic Quick Attach Couplers allow operators to hook up or remove attachments at the flip of a switch, without leaving the cab.



U48-5 // PREMIUM WEDGE COUPLER

TOOTH/FROST RIPPER



- Kubota provides robust ripper attachments to break up soil or frost and dig up stumps or roots.
- Wholegood number K0360RP

TRENCHING AND DITCHING BUCKETS

Kubota offers a range of mechanical reversible trenching and ditching buckets for digging with hooks, so chains can be attached to place objects.

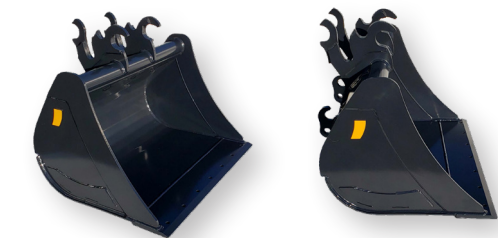
TRENCHING BUCKETS

Whole Good #	Width	Heaped Capacity (Cubic Feet)	Weight (lbs)	Number of Teeth	Calculated Breakout Force (lbf)
K0346T	15"	3.28	270.9	3	10507
K0347T	24"	6.08	297.2	5	
K0348T	30"	8.07	329.9	6	



DITCHING BUCKETS

Whole Good #	Width	Heaped Capacity (Cubic Feet)	Weight (lbs)	Calculated Breakout Force (lbf)
K0337D	42"	12.06	359.6	10507
K0336D	48"	14	392.9	



INVERTED AND REVERSABLE EAR KIT

- Ear kits modify buckets and attachments that are not offered by Kubota, so they are compatible with Kubota Mechanical Quick Attach Couplers. The inverted ear kit is specifically designed to fit attachments such as breakers, rake, tooth/frost ripper and vibratory compactors.
- Wholegood number K0300EAR Inverted Ear
- Wholegood number K0300EARR Reversible Ear



REVERSIBLE EAR KIT

INVERTED EAR KIT

HYDRAULIC BREAKER ADAPTOR

- A KXB510QA or KXB560QA hydraulic breaker can be fitted to the U48-5 to break up rocks, concrete, and construction materials by simply attaching a K0302KXB adapter at the end of the arm.



HYDRAULIC THUMB

- Kubota Hydraulic Thumbs make it easy for operators to pick up and move tree branches, concrete, rocks, and other debris from work sites.
- Wholegood number K0324



HYDRAULIC QUICK ATTACH COUPLER CONVERSION KIT



- Convert the Mechanical Quick Attach Coupler to hydraulic with the Hydraulic Quick Attach Coupler Conversion kit.

ROOT RAKE

- The Root Rake attachment can be used to sift rocks and soil, remove shrubs, reduce overgrowth, and manage crops.
- Wholegood number K0352RK





The five ton, tight tail swing U55-5 is a versatile machine that can easily access small spaces. The KX057-5 has a user-friendly digital panel and an electronically controlled fuel injection system.

U55-5 & KX057-5 // STANDARD WEDGE COUPLER

MECHANICAL QUICK ATTACH COUPLER



- The Standard Wedge Mechanical Quick Attach Coupler makes bucket changes quick and efficient. The Standard coupler keeps the bucket close to the dipper end, so there's no loss of breakout force.
- Wholegood number K9940C3

HYDRAULIC QUICK ATTACH COUPLER

- Kubota Hydraulic Quick Attach Couplers allow operators to hook up or remove attachments at the flip of a switch, without leaving the cab.
- Wholegood number K9940H & K9940HIKA



HYDRAULIC THUMB

- Kubota Hydraulic Thumbs make it easy for operators to pick up and move tree branches, concrete, rocks, and other debris from work sites.
- Wholegood number K7905C (Mechanical QA) and K7905H (Hydraulic QA)

TOOTH RIPPER



- Kubota provides robust ripper attachments to break up soil or frost and dig up stumps or roots.
- Wholegood number K9940FR

HYDRAULIC BREAKER ADAPTOR



- A KXB510QA or KXB560QA hydraulic breaker can be fitted to the U55-5 and KX057-5 to break up rocks, concrete, and construction materials by simply attaching a K9940KXBF adaptor at the end of the arm.

EAR KIT



- Ear kits modify buckets and attachments that are not offered by Kubota, so they are compatible with Kubota Mechanical Quick Attach Couplers.
- Wholegood number K9940EAR

TRENCHING AND DITCHING BUCKETS

TRENCHING BUCKETS

Whole Good #	Width	Heaped Capacity (Cubic Feet)	Weight (lbs)	Number of Teeth	Calculated Breakout Force (lbf)
K9940QC	12"	2.6	210	3	14565
K9941QC	16"	3.8	265	4	
K9942QC	18"	4.4	305	4	
K9943QC	24"	6.3	346	5	
K9944QC	30"	8.2	395	6	
K9945QC	36"	8.2	410	7	15195

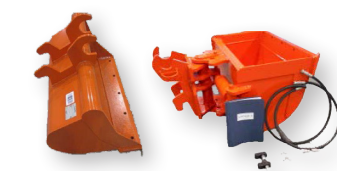
ROOT RAKE



- The Root Rake attachment can be used to sift rocks and soil, remove shrubs, reduce overgrowth, and manage crops.
- Wholegood number K9940LR

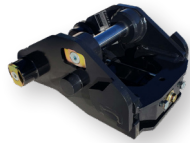
DITCHING & TILT DITCHING BUCKETS

Whole Good #	Width	Heaped Capacity (Cubic Feet)	Weight (lbs)	Calculated Breakout Force (lbf)
K9946QC	36"	7.8	270	16331
K9947QC	48"	8.7	350	16331
K9942QCT	42"	79.2	600	16148
K9948QCE	42"	7.9	335	16331



U55-5 & KX057-5 // PREMIUM WEDGE COUPLER

MECHANICAL QUICK ATTACH COUPLER



- The Premium Wedge Mechanical Quick Attach Coupler makes bucket changes quick and efficient. This premium coupler lets operators mechanically reverse trenching and ditching buckets.
- Wholegood number K0302

HYDRAULIC QUICK ATTACH COUPLER

- Kubota Hydraulic Quick Attach Couplers allow operators to hook up or remove attachments at the flip of a switch, without leaving the cab.
- Wholegood numbers: K0315HC – KX057-5
K0314HC – U55-5



INVERTED AND REVERSABLE EAR KIT

- Ear kits modify buckets and attachments that are not offered by Kubota, so they are compatible with Kubota Mechanical Quick Attach Couplers. The inverted ear kit is specifically designed to fit attachments such as breakers, rake, tooth/frost ripper and vibratory compactors.
- Wholegood number K0300EAR Inverted Ear
- Wholegood number K0300EARR Reversible Ear



REVERSIBLE EAR KIT



INVERTED EAR KIT

HYDRAULIC QUICK ATTACH COUPLER CONVERSION KIT



- Convert the Mechanical Quick Attach Coupler to hydraulic with the Hydraulic Quick Attach Coupler Conversion kit.
- Wholegood numbers: K0315HKIT – KX057-5
K0314HKIT – U55-5

HYDRAULIC BREAKER ADAPTOR

- A KXB510QA or KXB560QA hydraulic breaker can be fitted to the U55-5 & KX057-5 to break up rocks, concrete, and construction materials by simply attaching a K0302KXB adapter at the end of the arm.



HYDRAULIC THUMB

- Kubota Hydraulic Thumbs make it easy for operators to pick up and move tree branches, concrete, rocks, and other debris from work sites.
- Wholegood number K0324



U55-5 & KX057-5 // PREMIUM WEDGE COUPLER

TOOTH/FROST RIPPER



- Kubota provides robust ripper attachments to break up soil or frost and dig up stumps or roots.
- Wholegood number K0360RP

TRENCHING AND DITCHING BUCKETS

Kubota offers a range of mechanical reversible trenching and ditching buckets for digging with hooks, so chains can be attached to place objects.

TRENCHING BUCKETS

Whole Good #	Width	Heaped Capacity (Cubic Feet)	Weight (lbs)	Number of Teeth	Calculated Breakout Force (lbf)
K0346T	15"	3.28	270.9	3	10507
K0347T	24"	6.08	297.2	5	
K0348T	30"	8.07	329.9	6	



DITCHING BUCKETS

Whole Good #	Width	Heaped Capacity (Cubic Feet)	Weight (lbs)	Calculated Breakout Force (lbf)
K0337D	42"	12.06	359.6	10507
K0336D	48"	14	392.9	



ROOT RAKE

- The Root Rake attachment can be used to sift rocks and soil, remove shrubs, reduce overgrowth, and manage crops.
- Wholegood number K0352RK





This tight tail swing excavator delivers fuel economy and reduced emissions, while providing stability, power, and versatility.

KX080-4S2 // STANDARD WEDGE COUPLER

MECHANICAL QUICK ATTACH COUPLER

- The Standard Wedge Mechanical Quick Attach Coupler makes bucket changes quick and efficient. The Standard coupler keeps the bucket close to the dipper end, so there's no loss of breakout force.
- Wholegood number K9980C3



HYDRAULIC THUMB

- Kubota Hydraulic Thumbs make it easy for operators to pick up and move tree branches, concrete, rocks, and other debris from work sites.
- Wholegood number K7906C

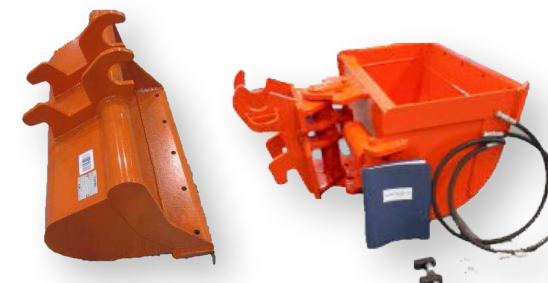
HYDRAULIC BREAKER ADAPTOR

- A KXB860QA hydraulic breaker can be fitted to the KX080-4S2 to break up rocks, concrete, and construction materials by simply attaching a K9980KXBQF adapter at the end of the arm.



DITCHING & TILT DITCHING BUCKETS

Whole Good #	Width	Heaped Capacity (Cubic Feet)	Weight (lbs)	Calculated Breakout Force (lbf)
K9985QCD	36"	10.9	600	15021
K9987QCD	48"	12.9	632	18078
K9989QCD	60"	14.4	758	18078
K9987QCT	48"	10.8	787	13428



HYDRAULIC QUICK ATTACH COUPLER

- Kubota Hydraulic Quick Attach Couplers allow operators to hook up or remove attachments at the flip of a switch, without leaving the cab.
- Wholegood number K9980H & K9980HIK-1



EAR KIT

- Ear kits modify buckets and attachments that are not offered by Kubota, so they are compatible with Kubota Mechanical Quick Attach Couplers.
- Wholegood number K9980EAR



TOOTH/FROST RIPPER

- Kubota provides robust ripper attachments to break up soil or frost and dig up stumps or roots.
- Wholegood number K9980FR



ROOT RAKE

- The Root Rake attachment can be used to sift rocks and soil, remove shrubs, reduce overgrowth, and manage crops.
- Wholegood number K9987LR



TRENCHING BUCKETS

Whole Good #	Width	Heaped Capacity (Cubic Feet)	Weight (lbs)	Number of Teeth	Calculated Breakout Force (lbf)
K9982QC	18"	6.1	362	4	13984
K9983QC	24"	7.5	425	5	
K9984QC	30"	10.1	499	6	
K9985QC	36"	12.6	570	7	



KX080-4S2 // PREMIUM WEDGE COUPLER

MECHANICAL QUICK ATTACH COUPLER



- The Premium Wedge Mechanical Quick Attach Coupler makes bucket changes quick and efficient. This premium coupler lets operators mechanically reverse trenching and ditching buckets.
- Wholegood number K0400

HYDRAULIC QUICK ATTACH COUPLER

- Kubota Hydraulic Quick Attach Couplers allow operators to hook up or remove attachments at the flip of a switch, without leaving the cab.
- Wholegood number K0410HC



INVERTED AND REVERSABLE EAR KIT

- Ear kits modify buckets and attachments that are not offered by Kubota, so they are compatible with Kubota Mechanical Quick Attach Couplers. The inverted ear kit is specifically designed to fit attachments such as breakers, rake, tooth/frost ripper and vibratory compactors.
- Wholegood number K0400EAR Inverted Ear
- Wholegood number K0400EARR Reversible Ear



REVERSIBLE EAR KIT



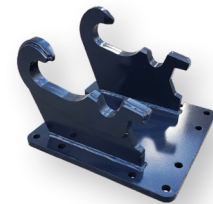
INVERTED EAR KIT

HYDRAULIC THUMB



- Kubota Hydraulic Thumbs make it easy for operators to pick up and move tree branches, concrete, rocks, and other debris from work sites.
- Wholegood number K0420

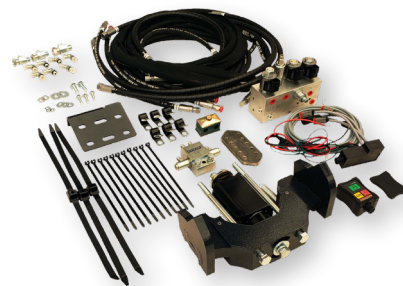
HYDRAULIC BREAKER ADAPTOR



- A KXB860QA hydraulic breaker can be fitted to the KX080-4S2 to break up rocks, concrete, and construction materials by simply attaching a K0400KXB adaptor at the end of the arm.

HYDRAULIC QUICK ATTACH COUPLER CONVERSION KIT

- Convert the Mechanical Quick Attach Coupler to hydraulic with the Hydraulic Quick Attach Coupler Conversion kit.
- Wholegood number K0410HKIT



KX080-4S2 // PREMIUM WEDGE COUPLER

TOOTH/FROST RIPPER



- Kubota provides robust ripper attachments to break up soil or frost and dig up stumps or roots.
- Wholegood number K0460RP

ROOT RAKE



- The Root Rake attachment can be used to sift rocks and soil, remove shrubs, reduce overgrowth, and manage crops.
- Wholegood number K0450RK

TRENCHING AND DITCHING BUCKETS

Kubota offers mechanical, reversible trenching and ditching buckets with hooks, so chains can be attached to lift objects.

TRENCHING BUCKETS

Whole Good #	Width	Heaped Capacity (Cubic Feet)	Weight (lbs)	Number of Teeth	Calculated Breakout Force (lbf)
K0440T	18"	5	384.5	4	15169
K0441T	30"	9.43	520.7	5	
K0442T	36"	11.71	570	7	



DITCHING BUCKETS

Whole Good #	Width	Heaped Capacity (Cubic Feet)	Weight (lbs)	Calculated Breakout Force (lbf)
K0430D	48"	20.73	630.8	15169
K0431D	54"	18.45	580.9	
K0432D	60"	16.17	536.7	

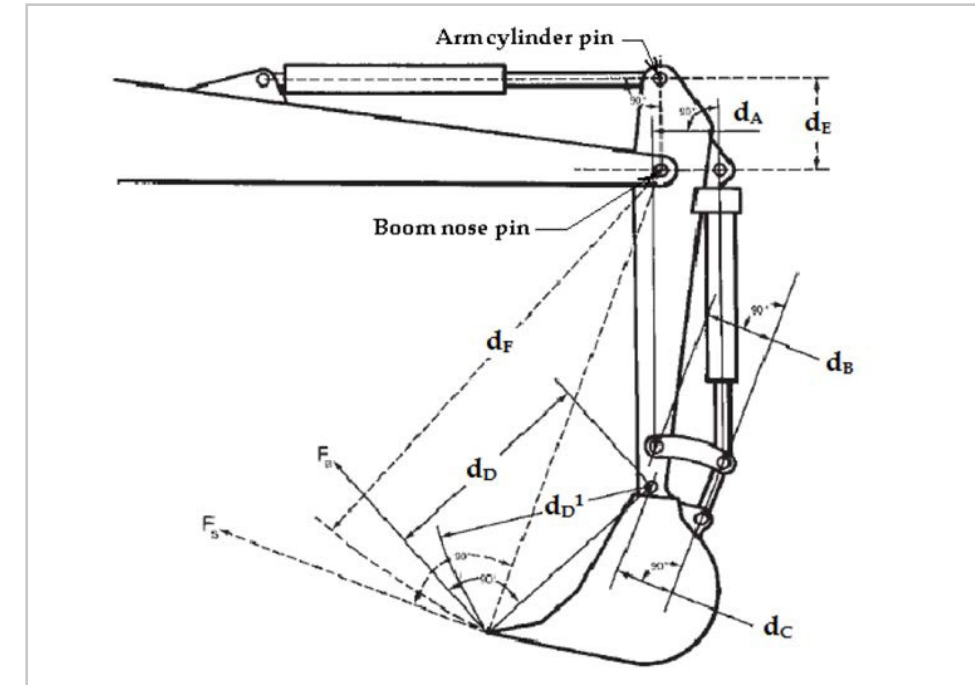


FEATURES AND BENEFITS

FEATURE	BENEFIT
WEDGE COUPLER	Both the Standard and Premium Coupler are a wedge design. It keeps the bucket close to the end of the arm therefore you don't lose breakout force. The Wedge coupler prevents the bucket from being sloppy over time to provide the operator a precise and efficient digging
MECHANICAL QUICK ATTACH	The manual quick attach coupler allows operator to exchange buckets quickly and efficiently. The operator does not have to leave the operator station to detach buckets or attachments.
HYDRAULIC COUPLER	Couplers are available for the operator to exchange buckets without leaving the operator station. Both Standard and Premium Coupler have a secondary lock. Standard Hydraulic Coupler is available on KX033-4 and larger excavators. Premium Hydraulic Coupler is available on KX030-4 and larger excavators.
HYDRAULIC COUPLER CONVERSION KIT	The Premium Coupler has a hydraulic coupler conversion kit. The premium mechanical quick attach can be upgraded to hydraulic coupler. This is only available on the Premium Coupler.
REVERSIBLE BUCKETS	The Premium Coupler trenching and ditching buckets allow operator to mechanically reverse bucket. The reversible buckets allow the operator to dig up close to walls or scoop away from the excavator.
TILT DITCHING BUCKET	The tilt ditching bucket allows the operators to easily grade or level an area without having to reposition their excavator as frequently, making them more efficient
RAKE	The Root Rake allows the operator for fast clean-ups, vegetation management, sifting soil/rocks and removing unwanted shrubbery and overgrowth
TOOTH / FROST RIPPER	Whether you have to break frost or dig out roots and stumps, Kubota has a tooth ripper for the job.
PREMIUM COUPLER BUCKET CATEGORIES	<p>The Premium Coupler Bucket has 4 categories:</p> <ul style="list-style-type: none"> - Category 1 – K008-3, U17, KX018-4 - Category 2 – U27-4 - Category 3 – KX030-4 to KX057-4 - Category 4 – KX080-4S2 <p>The benefit between the categories are buckets are interchangeable. A KX030-4 bucket will fit a KX057-4. The buckets are different dimension and have different capacities however operator can use KX030-4 buckets on a KX057-4.</p>

BREAKOUT FORCE CALCULATION

Breakout force is dependent on power unit and bucket design. Two key factors on the bucket design are distances d_c and d_d . To increase bucket breakout force distance d_c will need to be increased or distance d_d will need to be decreased on bucket design.



$$F_B = \frac{p \times (\pi/4) D_B^2}{d_D} \left(\frac{d_A \times d_C}{d_B} \right)$$

F_B = Bucket Breakout Force

p = Pressure

D_B = Bucket Cylinder Diameter

All other designations are shown in diagram

POWER UNITS // SMALL FOOTPRINT, BIG RESULTS.

Tackle the toughest excavations with ease. From Ultra Compact to Mid Size, every Kubota mini-excavator starts with a powerful, dependable and clean-running Kubota engine that delivers low noise and vibration, reliable performance, exceptional fuel efficiency and emission compliance. With spacious, comfortable cabs and superior strength and stability, they're easy to operate, maneuver, and control. Find the Kubota mini-excavator that works best for you.

K008-5 SERIES



Spacious, comfortable, and more productive, yet it fits in the tightest spaces. The K008-5 sets the standard for all ultra-compact excavators.

KX018-4 SERIES



Setting the benchmark for mini-excavators, the premium Kubota KX018-4 is engineered to handle the heaviest of loads in the tightest of places. With a roomy operator's area, the Kubota KX018-4 is jam packed with features to increase productivity and comfort.

KX030-4 SERIES



When outstanding maneuverability, operational performance, operator comfort, ease of servicing, durability and reliability are the deciding factors, the KX030-4 mini-excavator is the answer.

KX033-4 SERIES



Designed for efficiency, built for stability, and created for comfort. The new KX033-4 redefines the mini-excavator.

KX040-4 SERIES



The Kubota KX040-4 combines superior strength, versatility and performance to deliver one of the most balanced mini-excavators on the market, incorporating industry leading technology.

KX057-5 SERIES



The Kubota KX057-5 Series 5.5 ton mini-excavator combines cab comfort and an impressive Stage V engine to get the job done. It also offers modern features like a new LCD screen, LED lights and a ton of work-focused options for better capability.

KX080-4S2 SERIES



Kubota's flagship 8-ton Power Utility Excavator combines performance with superior digging force.

U10-5 SERIES



The Kubota U10-5 Series 1-ton tight tail swing excavator is built to get more done in compact spaces. Power your way through areas as tight as 29" to perform challenging landscaping tasks.

U17 SERIES



The Kubota U17 is the perfect mini-excavator for tackling jobs in the tightest of spaces. Powered by Kubota 17 HP engine, renowned worldwide for their outstanding reliability, the U17 delivers on superior manoeuvrability.

U27-4 SERIES



The U27-4 is designed for challenging jobs that are not possible with larger excavators. Powerful breakout force, compact design and precision control delivers productive performance in tight working conditions.

U35-4 SERIES



With an all-new 3 tonne class cab, the Kubota U35-4 is a class leading, tight tail swing mini-excavator offering more room than ever before. Powered by a reliable Kubota 24.8 HP engine, the Kubota U35-4 combines superior power and outstanding versatility.

U55-5 SERIES



The Kubota U55-5 Series is a tight tail swing excavator that brings great versatility to any jobsite. Its well-balanced design combines great power and comfort to handle tough jobs and tougher working conditions.

POWER UNITS // SMALL FOOTPRINT, BIG RESULTS.

SSV SERIES



Kubota skid steer loaders offer power, performance, operator comfort and versatility. They can be fitted with a variety of attachments for a range of applications.

SVL SERIES



These compact track loaders deliver best-in-class bucket breakout force and lifting capacity, outstanding stability, a wide and comfortable operator area, and much more.

R SERIES



Kubota's next-generation R640 and R540 wheel loaders come with all the power and comfort you need to get the results you demand

KC SERIES



The KC Series compact in size and provides all the load capacity and dump force needed to efficiently and reliably get the job done. The rugged power delivered by the Kubota diesel engine ensures reliable and efficient operation in a wide range of applications.

SCL SERIES



Meet the Kubota SCL1000: the compact stand-on track loader that stands head and shoulders above the rest. Designed for tight spaces, it's perfect for landscaping jobs like building pools, installing fences, or preparing soil.



Your work never stops. Neither does Kubota.

KUBOTA CONSTRUCTION SOLUTIONS - MADE FOR CANADIANS



ROOT GRAPPLES

For construction crews, farmers, landscapers, nurseries, tree services, and rental fleets who need a tool to pick up large debris — while separating dirt and other small material.



BOX BLADES

Crafted to meet the demands of contractors and landscapers. Equip this construction-grade blade to any skid steer or track loader, and handle backfilling, grading, landscaping, levelling, and more.



TRENCHERS

Makes quick work of trenching runs for pipe, cable, electrical, or irrigation. Available in two sizes with two motor options. Great for rentals, contractors, and developers.



RIPPERS

Created for contractors and landscapers looking to rip or loosen dirt, sand, and tailings.



HYDRAULIC BREAKERS

Fit for any construction site, demolition site and beyond. Our range of breakers offer durability, reliability and power.



POST HOLE DIGGERS

Nurseries, tree farms, landscapers, contractors, construction companies, farmers and municipalities will find Kubota's post hole diggers a good fit for their heavy-duty applications.



These attachments, implements and more are available at your Kubota dealer. For model availability and pricing, please contact your local dealership.



Kubota

KUBOTA.CA

CE Excavator Buckets Guide
© 2022 Kubota Canada Ltd.

Head Office: 1155 Kubota Drive,
Pickering, Ontario L1X 0H4
TEL: (905) 294-7477

Part: CE-EXCBUCKETSENG

QUALITY BUILT.
PRECISION MADE.

For Earth, For Life
Kubota

Kubota Canada Ltd. reserves the right to change the stated specifications without notice. The comparison is for descriptive purposes only and does not provide any express or implied warranty of any nature, including any warranty of merchantability or for a particular purpose. For complete operational information, the operator's manual should be consulted. KCL supplies products and services to Canadian residents only. For information regarding Kubota products or services outside Canada, see Kubota Corporation's global web site.

Kubota