

Specifications

		KUBOTA							
Model		Z411KW-48	Z421KW-54	Z421KWT-60	Z412KW-48	Z422KW-54	Z422KWT-60		
Engine	Model	GH7302V		GH7301V		GH7301V			
	Type	Air cooled 2 cylinders gasoline engine							
	Engine Gross power	HP	22.0	24.0	22.0	24.0			
	Total displacement	cu.in. (cc)	44.3 (726)						
	Starting system	Key switch							
Dimensions	Overall length	in. (mm)	80.9 (2055)						
	Overall width	w/ mower	in. (mm)	61.1 (1552)	67.3 (1710)	73.6 (1870)	61.1 (1552)	67.3 (1710)	73.6 (1870)
		w/o mower	in. (mm)	48.7 (1236)		54.2 (1376)	48.7 (1236)		54.2 (1376)
	Overall height	w/ ROPS (upright)	in. (mm)	69.8 (1772)					
		w/o ROPS (folded)	in. (mm)	49.8 (1265)					
Wheelbase		in. (mm)	49.4 (1255)						
Tread/Tire	Tread	Front	in. (mm)	37.2 (944)					
		Rear	in. (mm)	39.4 (1000)		42.1 (1070)		39.4 (1000)	42.1 (1070)
	Tire size	Front tire	in. (mm)	13 x 5.0 - 6, Smooth pneumatic		13 x 6.5 - 6, Smooth pneumatic			
		Rear tire	in. (mm)	24 x 9.5 -14, Low profile tire		24 x 12.0-14, Low profile tire		24 x 9.5 -14, Low profile tire	
Weight (w/ mower)		lbs. (kg)	874 (396)	884 (401)	930 (422)	904 (410)	918 (416)	954 (433)	
Transmission			Hydro-Gear® Commercial ZT3600®						
Transmission system			2-HST w/Gear reduction						
Speed control			2-hand lever						
Traveling speed range	Forward	mph (km/h)	0 - 10.0 (0 - 16.0)						
	Reverse	mph (km/h)	0 - 5.0 (0 - 8.0)						
Braking system			Cog style parking lock / Foot pedal						
PTO	Type		Belt drive						
	Clutch type		Electric clutch						
	PTO brake		Dry disc						
Mower deck	Model		RCK48P-400Z	RCK54P-400Z	RCK60P-400Z	RCK48P-400Z	RCK54P-400Z	RCK60P-400Z	
	Mower deck type		Side discharge						
	Mower lift system		Mechanical / Foot pedal						
	Deck depth	in. (mm)	5.0 (127)						
	Belt type		Belt drive						
	Deck steel thickness	in. (mm)	0.135 (3.4)						
	Anti scalp roller		Rigid						
	Cutting width of mower	in. (mm)	48 (1219)	54 (1372)	60 (1524)	48 (1219)	54 (1372)	60 (1524)	
	Number of blades		3						
	Cutting height	in. (mm)	1.5 - 5.0 (38 - 127)						
	Mounting system of mower		Parallel linkage						
	Blade tip speed	FPM	18800	18700	18300	18800	18700	18300	
Seat			Deluxe seat			Deluxe seat w/3 inch stroke suspension			
Engine stop system			Key stop						
Fuel tank capacity		Gal. (ℓ)	6.8 (25.7)						
Battery			U1 (12V, RC : 45min, CCA : 300, CA : 410)						
Generator capacity		Amp	15A						
Hour meter			Standard						
Fuel gauge			Sight window						

*These Kawasaki engines have been tested in accordance with SAE J1995, verified by TÜV Rheinland Group, and certified by SAE International. The gross power ratings of these engines were determined by using measurements according to SAE J1995 which were witnessed by SAE-approved witnesses from TÜV Rheinland Group. Torque ratings of these engines were not certified by SAE. Actual power and torque output will vary depending on numerous factors, including, but not limited to, the operating speed of the engine in application, environmental conditions, maintenance, and other variables.
 **Power (hp) specifications for individual gasoline engine models are rated pursuant to Society of Automotive Engineers (SAE) J1940 or J2723 based on gross output testing performed in accordance with SAE J1995 without the air cleaner and muffler. Gross engine hp will be higher than actual engine power which is affected by accessories, application, engine speed, ambient operating conditions and other factors. The gross engine horsepower information is for comparison purposes only.

Kubota Canada Ltd. reserves the right to change the stated specifications without notice. This brochure is for descriptive purposes only and reasonable efforts were used to set forth the contained information; some items shown may be optional and some products shown may not be available at all dealerships. Kubota disclaims all representations and warranties, express or implied, or any liability from the use of this brochure. For complete warranty, safety and product information, consult your local Kubota dealer and the operator's manual. Power (HP/KW) and other specifications are based on various standards or recommended practices. For your safety, Kubota strongly recommends the use of a Rollover Protective Structure (ROPS) and seat belt in almost all applications. This brochure is intended for Canada only. For information regarding Kubota products or services outside these areas, see Kubota Corporation's global web site. Kubota does not provide parts, warranty or service for any Product which is re-sold or retailed in any country other than the country for which the Product(s) were designed or manufactured.

Attachment & Option Kit



• **Grass Catcher**
 The optional 7 bushels (250 liters) grass catcher can be attached and detached without ever requiring the use of any tools.



- **Mulching Kit**
- **LED Work Lights**
- **Seat Suspension Kit**
- **OCDC**
- **Maintenance Lift Kit**



KUBOTA CANADA LTD.

Head Office:
 1155 Kubota Drive, Pickering, Ontario L1X 0H4
 TEL: (905) 294-7477

Visit our web site at: www.kubota.ca

©2020 Kubota Corporation



Kubota Genuine Parts
 for maximum performance, durability and safety



For Earth, For Life



KUBOTA ZERO-TURN MOWER Z400 Series

Designed for the residential user seeking high levels of comfort and convenience, and the professional user demanding superior durability and performance.





Z400 Series

Comfort and Convenience, durability and performance. It's everything you want in a zero-turn mower.

Residential users require high levels of comfort and convenience. Professional users demand superior durability and performance. Both want easy operation and top level performance to handle even the most challenging mowing tasks. The Z400 Series of zero-turn mowers delivers all that and more, including powerful engines matched with rugged transmissions, smooth operation levers, and, of course, Kubota's reputation for outstanding quality and durability.



COMFORT & CONVENIENCE

Designed for performance, the Z400 Series also offers a wealth of comfort and convenience features to keep you feeling fresh and working longer.

NEW HIGH BACK 3" SUSPENSION SEAT (Z412, Z422 only)

Soft and roomy, the high back 3" suspension seat will keep you comfortable even on those extra-long mowing jobs. The seat slides a full 4" travel, letting you find just the right position for maximum personal comfort.



WIDE FOOT PAN

There's plenty of legroom up front, thanks to a wide foot pan. It also makes entry and exit a snap.

CUP HOLDER

Integrated cup holder ensures that your drink is always handy, so you can stay on the job longer between breaks.

SMOOTH OPERATION LEVERS

The operation load of the dual operation levers can be adjusted to each operator's needs to provide smooth, precise control and less fatigue at the end of the day. The damper force can be easily adjusted to ensure optimum comfort for every operator.

12V POWER OUTLET

Charge your phone or other accessory while mowing the lawn. The Z400 also has an integrated smart phone holder.

LARGE FUEL TANK

The large, 6.8-gallon fuel tank keeps the Z400 Series mowing for more than 6 hours between refueling stops. (depending on conditions)

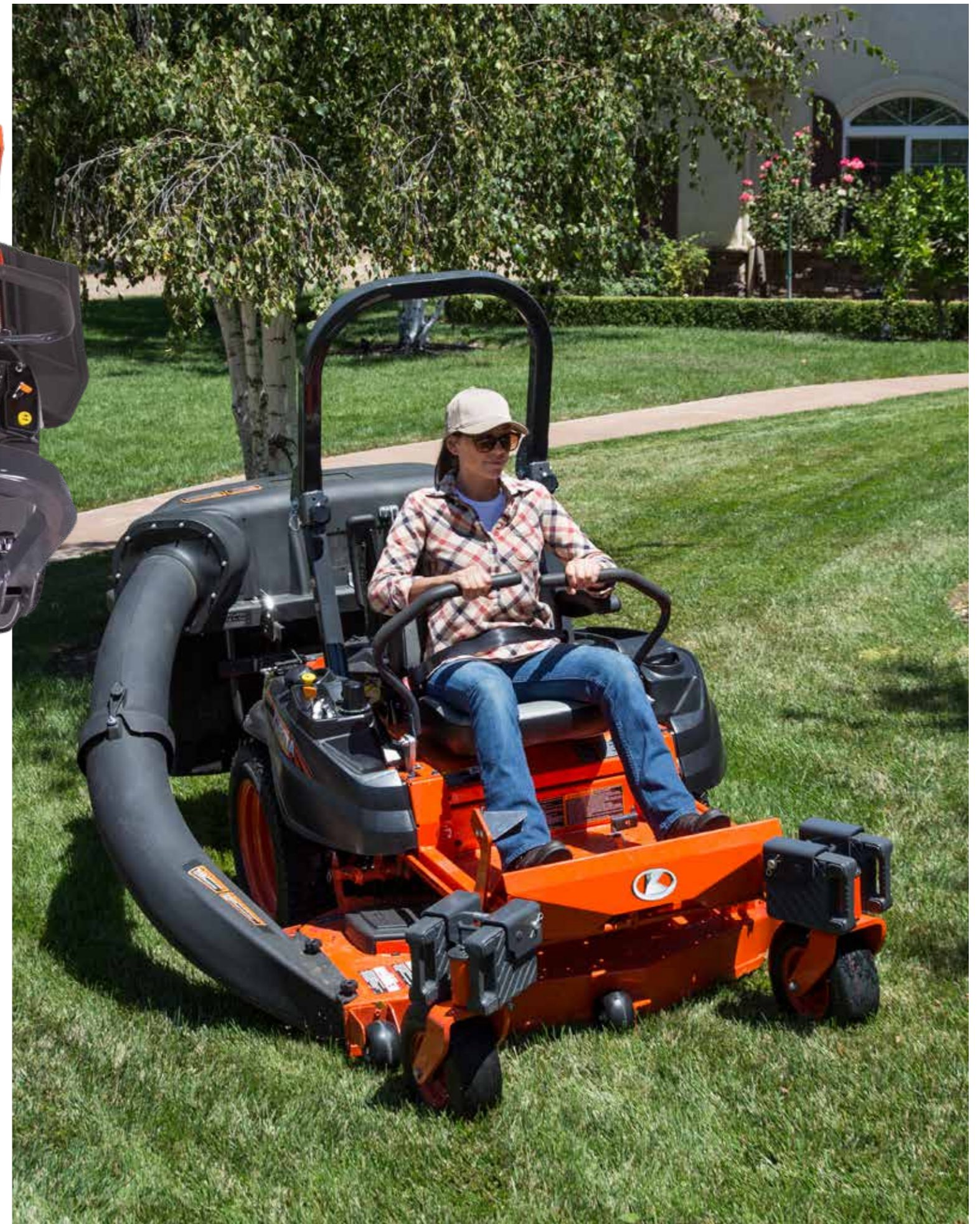
ERGONOMIC CONTROL LAYOUT

All controls are ergonomically arranged for quick identification and simple operation, with most controls on the right side for faster, easier access.



5" DEEP WELDED MOWER DECK

This steel welded mower deck provides outstanding, professional-level cutting performance. A reinforced spindle mount area improves durability.



PERFORMANCE & EASY OPERATION

The Z400 Series boasts the kind of performance found only in commercial-grade mowers, as well as the easy operation that residential and professional users alike can appreciate.

24" Rear Tires
Big tires mean a softer ride.

6.5" WIDE FRONT TIRE (Z412, Z422 only)

Add some stability when driving over rough terrain. They also reduce the overall footprint thus reducing turf damage and improved cut quality.



NEW

PARKING BRAKE

A foot pedal locks the brake so the unit can't move, ensuring safe and secure parking.



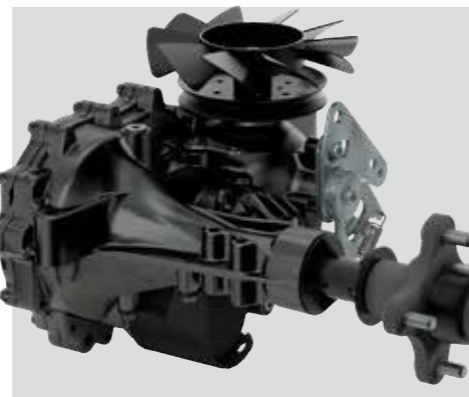
POWERFUL ENGINES

The Z400 Series comes equipped with powerful KAWASAKI engines that provide the torque you need to power through tall grass and rugged environments.



RUGGED TRANSMISSION

Power from the engine is delivered to the wheels through rugged, Hydro-Gear® Commercial ZT3600® transmission.



PRECISION ADJUSTMENT

A simple twist of a dial lets you adjust the cutting height in precise 1/4" increments.

LOW PROFILE TIRE

The Z400 Series' new wide low-profile tires not only look good, they provide better traction for all types of mowing tasks. They also have a larger footprint that reduces ground compaction as well as turf damage during turns.

FOLDABLE ROPS

The ROPS on the Z400 Series mowers meets ISO 21299 specifications to ensure safe and efficient operation. The ROPS easily folds down to allow the mower to pass under low obstructions, as well as permits easier storage in a garage or shed.

10.0 mph TRAVEL SPEED



K-LIFT

Mechanical One Push Deck Lift Pedal

The K-Lift pedal lets you quickly and easily adjust the cutting height without leaving your seat. Simply press the pedal and turn the adjustment dial!



1 Push and release the pedal to raise the deck



2 Use the dial to adjust the cutting height



3 Push and release the pedal again to lower the deck