

Specifications

Model	MX4900				MX5400				MX6000		
	Gear-Drive Transmission		HST		Gear-Drive Transmission		HST		HST		
	4WD				2WD		4WD		4WD		
Engine											
Type (Make: KUBOTA) V2403CR-T											
Liquid-cooled, 4-cylinder diesel											
Engine gross SAE J1995 power	HP (kW)	50.3 (37.5)	51.8 (38.6)	55.5 (41.4)	57.0 (42.5)	63.4 (47.3)					
Engine net SAE J1349 power	HP (kW)	47.7 (35.6)	48.5 (36.2)	53.0 (39.5)	53.8 (40.1)	59.5 (44.4)					
PTO power	HP (kW)	41.3 (30.8)		46.5 (34.7)		51.8 (38.6)					
No. of cylinders/Aspiration	4 / Turbocharged										
Total displacement	cu. in. (cm³)	148.6 (2434)									
Rated speed	rpm	2700									
Fuel tank capacity (ROPS / CAB)	US gal. (ℓ)	13.5 (51) / 11.9 (45)									
Air cleaner	Dry-dual element										
Alternator (ROPS / CAB)	Amp	45 / 130									
Transmission											
No. of speeds	8F/8R		3 Ranges		8F/8R		3 Ranges				
Main gear shift (4 speeds) (ROPS / CAB)	Partially synchronized (3rd & 4th)		-		Partially synchronized (3rd & 4th)		-				
Shuttle	Synchronized		Hydrostatic pedal operation		Synchronized		Hydrostatic pedal operation				
Main clutch	Dry single plate		No clutch		Dry single plate		No clutch				
Brake	Mechanical wet disc										
Differential lock	Rear standard (mechanical)										
PTO											
PTO type	Live independent, hydraulic PTO with PTO brake, wet clutch										
Speed	@540 rpm										
Hydraulic											
Pump capacity (main)	gpm (ℓ/min)	9.5 (35.8)									
Power steering	gpm (ℓ/min)	4.9 (18.6)									
3-point hitch	Category I & II										
Control system	Position (std), Draft (opt)										
Lift capacity at 24 in. behind lift point	lbs. (kg)	2310 (1050)									
No. of remote valves	Maximum 3 (opt)										
Tires											
Standard	Front/Rear	9.5-16/14.9-26			7.5L-15/14.9-26			9.5-16/14.9-26			
Traveling speeds (w/std. Ag. tires)											
No. of speeds (at rated engine speed)	Forward		Reverse		Forward		Reverse		Forward		Reverse
First	Fifth	1.1 (1.7)	5.1 (8.2)	1.0 (1.6)	4.7 (7.5)	L: 0 to	L: 0 to	1.1 (1.7)	5.1 (8.2)	1.0 (1.6)	4.7 (7.5)
Second	Sixth	1.5 (2.4)	7.2 (11.6)	1.4 (2.2)	6.6 (10.7)	4.2 (6.7)	3.7 (6.0)	1.5 (2.4)	7.2 (11.6)	1.4 (2.2)	6.6 (10.7)
Third	Seventh	2.4 (3.9)	11.7 (18.9)	2.2 (3.6)	10.7 (17.3)	M: 0 to	M: 0 to	2.4 (3.9)	11.7 (18.9)	2.2 (3.6)	10.7 (17.3)
Fourth	Eighth	3.6 (5.8)	17.3 (27.9)	3.3 (5.3)	15.9 (25.6)	8.1 (13.0)	7.3 (11.8)	3.6 (5.8)	17.3 (27.9)	3.3 (5.3)	15.9 (25.6)
						H: 0 to	H: 0 to				
						17.7 (28.5)	16.0 (25.8)				
Other features											
4WD drive system (4WD model)	Bevel gear type				-		Bevel gear type				
Steering	Hydrostatic power steering										
Hood type / Pedal type	Full open hood / Hanging pedals										
Operator platform	Flat deck										
Dimensions											
Overall length (w/o 3P)	in. (mm)	125.9 (3195)			127.8 (3245)			125.9 (3195)			
Overall height (w/Foldable ROPS / CAB)	in. (mm)	95.7 (2430) / 92.7 (2355)									
Overall width (Minimum)	in. (mm)	69.7 (1770)									
Wheelbase	in. (mm)	74.6 (1895)									
Min. ground clearance	in. (mm)	15.2 (385)									
Tread width	Front	in. (mm)			52.2 (1325)			50.4-62.2 (1280-1580)			52.2 (1325)
	Rear	in. (mm)			54.2-58.7 (1375-1490)						
Turning radius (w/ brake)	ft. (m)	8.9 (2.7)			8.5 (2.6)			8.9 (2.7)			
Weight											
	with ROPS	lbs. (kg)	3716 (1686)	3734 (1694)	3474 (1576)	3716 (1686)	3734 (1694)				
	with CAB	lbs. (kg)	4251 (1928)	4268 (1936)	-	4251 (1928)	4268 (1936)				

Kubota Canada Ltd. reserves the right to change the stated specifications without notice. This brochure is for descriptive purposes only and reasonable efforts were used to set forth the contained information; some items shown may be optional and some products shown may not be available at all dealerships. Kubota disclaims all representations and warranties, express or implied, or any liability from the use of this brochure. For complete warranty, safety and product information, consult your local Kubota dealer and the operator's manual. Power (HP/kW) and other specifications are based on various standards or recommended practices. For your safety, Kubota strongly recommends the use of a Rollover Protective Structure (ROPS) and seat belt in almost all applications. This brochure is intended for Canada only. For information regarding Kubota products or services outside these areas, see Kubota Corporation's global web site. Kubota does not provide parts, warranty or service for any Product which is re-sold or retailed in any country other than the country for which the Product(s) were designed or manufactured.



For Earth, For Life
Kubota

MX

KUBOTA DIESEL TRACTOR MX Series

Exceeds Expectations.



KUBOTA CANADA LTD.

Head Office:
1155 Kubota Drive, Pickering, Ontario L1X 0H4, Canada
TEL: 1 800-405-6916

Visit our web site at: www.kubota.ca

©2024 Kubota Corporation



**Kubota
Genuine Parts**
for excellent
performance,
durability and
safety





EXCEEDS EXPECTATIONS MX SERIES

INTRODUCING THE MX SERIES

The MX Series tractors offer top-notch comfort and performance with the option of ROPS or cab configuration. Make your work easier with simplified ergonomic controls in a spacious operator station, equipped with all the features you need to stay comfortable on the job. Don't worry – it has all the power and capability you need to get the job done, too. On top of all that, the MX was designed with affordability in mind, so you can get a high-performance tractor at a low price point. Whether you're transporting hay bales, grading your driveway or performing general property maintenance, the MX Series is designed to exceed your expectations. So you can do your toughest work comfortably without breaking the bank.

HOSEPOWER* | RANGES

MX4900	Gear-Drive Model	50.3 Engine HP / 41.3 PTO
	HST Model	51.8 Engine HP / 41.3 PTO
MX5400	Gear-Drive Model	55.5 Engine HP / 46.5 PTO
	HST Model	57.0 Engine HP / 46.5 PTO
MX6000	HST Model	63.4 Engine HP / 51.8 PTO

* SAE J1995 Gross Engine Power

QUALITY

Engineered to withstand the toughest conditions while delivering premium results, every time. Tested in cold weather and built for life in Canada, these tractors offer affordable value which can be retained over time due to the quality build.

COMFORT

Comfort is combined with affordability in this rugged lineup. Some of the MX comfort features include a spacious operator station, heated and air-conditioned cab, and optional air ride seat with armrests, standard rubber floor mats.

VERSATILITY

The MX Series tractors are built for versatility and ease of operation. Select from your choice of three horsepower offerings, a cab or open station and either gear drive or HST transmission. Maximize versatility all year round with the dual-function loader and countless performance matched implements.

CAPABILITY

The performance matched loader has a lift capacity (Pivot pin@1.5m) of over 2800 lbs and out back the three point hitch can accommodate category 1 or 2 three-point implements. The MX makes tough jobs easy—whether you're moving materials, handling hay, or clearing snow, this tractor is always ready.

AFFORDABILITY

The MX series is the perfect value option without compromising power and capacity. The MX was designed to complete heavy-duty tasks without breaking the bank. All of this is achieved with comfort and capability in mind with the quality you expect from Kubota.



STANDARD EQUIPMENT FOR CAB MODEL

- Heater/Air Conditioner
- Tilt-Steering
- Radio Ready (Speakers and Antenna)
- Front Work Lights
- Front Wiper
- Suspension Seat
- Floor Mat
- 60 Amp Alternator
- Cup Holder
- 12V Socket
- Two Stage Opening Rear Window
- Rear View Mirror
- Rear Wiper
- Rear Defogger

OPTIONS

- Side Mirrors
- Armrests
- Rear Work Light
- Air Ride Seat

QUALITY

KUBOTA BUILT DIESEL ENGINE

Kubota has been building rugged and durable engines for over 100 years. The MX Series is equipped with the Kubota-built engine and Common-Rail System (CRS) with electronic controlled fuel injection that continue to be known for its reliability and power. The MX Series diesel engines are designed not only to maximize performance, but also keep you operating.

LOW NOISE AND LOW VIBRATION

Proven performance minus the unnecessary noise and vibration. The engine has been engineered with the operator in mind, resulting in an enhanced experience.

FUEL FILTER WITH WATER SEPERATOR

The MX Series fuel filter comes with a pre-filter and built in water separator for the fuel system. The pre-filter/water separator offers the traditional float indicator as well as an icon on the dash, and an audible alarm to alert the operator that the water separator needs to be drained.

Along with a durable chassis and easily accessible service points, the MX Series' routine maintenance is easy to access and intuitive.

CANADIAN WINTER READY

When winter rolls around in Canada, some tractors go into hibernation until the spring – but not the MX Series. It was built to withstand the harshest conditions, powering through to produce quality results while keeping operators comfortable. The MX Series is built and tested to rigorous standards to perform in Canada's climate. Thanks to its high-quality build, your MX will retain value over time.

COMFORT

Available in a Cab or ROPS models, the MX Series comes loaded with features designed to make the operations easy and comfortable. Now you can focus on the task at hand no matter the conditions: cold, hot, wet or dusty.

SUSPENSION SEAT WITH OPTIONAL ARMREST

The high-back suspension seat offers optimal comfort, even after a long day's work. The optional, foldable armrests help reduce arm movement and operator fatigue, especially when performing loader work.

SPACIOUS OPERATOR STATION

The large, flat deck provides plenty of legroom with room for adjustment, and is easy for getting on and off. Additionally, the wide space between the fenders gives operators room and flexibility for outstanding operator comfort.

YEAR-ROUND COMFORT WITH THE MX CAB

The rounded glass gives you a panoramic view of your surroundings. The factory installed heat and A/C provides year round comfort.

HST TRANSMISSION

The MX Series' HST transmission features a hydraulic servo control for easier pedal operation. This provides a quicker pedal response while minimizing the pressure and force needed to engage the tractor from moving forward to reverse. This not only provides more comfort, but also smoother performance and constant control no matter the application.



VERSATILITY

WHEN YOU SEE THE WORD VERSATILITY, THINK OF THE MX SERIES

Needing an affordable tractor big enough to move hay bales or pull a hay tedder and rake? Are you also needing that same tractor to get in and out of tight spaces such as barns, horse stalls, or wooded areas? The MX Series is the ultimate package when it comes to a tractor that can not only fit those larger compact applications, but also those smaller utility applications. Dirt work, moving snow, mowing, loader work, moving hay bales with the 3-point hitch and front loader, pulling hay rakes and tedders, or even commercial applications like snow removal, turf management, or poultry farms. These are just a few of the applications the MX Series was made to do.

TELESCOPIC LOWER LINKAGE*

With a heavy-duty 3-point hitch, and telescoping lower links, Kubota's MX Series takes on tough applications with performance you can count on. The MX Series is equipped with a large capacity hydraulic cylinder and pump which allows for a powerful lifting capacity and faster cycle times.

**Optional on 2wd Models*

INDEPENDENT PTO SWITCH (CLUTCH-LESS)

The independent PTO switch allows the operator to engage or disengage the PTO with a switch. Conveniently located, "push and turn" starts and one push stops the PTO.

CRUISE CONTROL*

Cruise control lever allows the operator to select and maintain the right travel speed to help reduce operator fatigue.

**Standard Feature on HST Models. Not Available on DT Models*

YOUR CHOICE OF GEAR DRIVE OR HYDROSTATIC TRANSMISSION (HST)

You know the job better than anyone, and you know exactly how to get it done. That's why the MX Series offers you an affordable choice of gear drive or hydrostatic (HST) transmissions. The Synchro-Shuttle gear drive transmission lets you spring into action with smooth control and power. The 4-speed main shift has 2 ranges (Hi/Low), that gives you 8 forward and 8 reverse speeds for the versatility you need to maximize productivity. The HST transmission provides smooth performance and control, making it a great choice when frequent changes in speed or direction are needed.



EXCEEDS EXPECTATIONS

With over 11 models to choose from, the MX series provides a range of cost effective solutions to tailored to fit your needs. It offers three separate horsepower ranges, all of which give you the option of ROPS or Cab.

The MX was designed with the bottom dollar in mind. This tractor is without a doubt a workhorse, but is not intended to break the bank. It comes equipped with all of the standard creature comforts you look for in a tractor, with a wide variety of available accessories to tailor the experience to your application.



CAPABILITY

PERFORMANCE MATCHED KUBOTA-BUILT LA1065A FRONT LOADER

Kubota's LA1065A front loader was specifically designed and built for the MX series, thus optimizing the loader's full capabilities. With a high lift capacity, lift height, and breakout force, the LA1065A provides the power needed for those heavy-duty jobs. Additionally, the LA1065A features simultaneous lift and dump of the loader and bucket. This combined with a fast loader cycle time makes operating easy, quick and task efficient.

REGENERATIVE LOADER VALVE

A regenerative circuit allows for simultaneous boom and bucket operation, increasing speed and dump times for maximum productivity. The loader valve also increases precision when it's needed, so back-dragging with the bucket or slowly releasing material can be done confidently and in control. This valve is designed and built by Kubota allowing the loader to work in perfect harmony with the MX.

2 LEVER QUICK COUPLER FOR LOADER ATTACHMENT

The standard 2-lever quick coupler allows easy attachment and detachment of front loader attachments like grapple buckets or bale spears without the use of tools.

3RD FUNCTION VALVE

The optional 3rd function valve broadens the scope of the front loader operation by enabling the use of a grapple bucket and other hydraulically controlled attachments. The 3rd function valve is activated with buttons located on the grip of the joystick.

EASY TO REMOVE

The Kubota LA1065A front loader is designed to be easily disconnected with the mounting pins and hose couplers without tools. This convenient system saves valuable time by letting you attach and detach the loader from the tractor. The removal of the loader can make grooming arenas or working in tight spaces that much simpler.

LA1065A FRONT LOADER SPECIFICATIONS*

Matching Tractor		MX4900/MX5400 MX6000
Maximum Lift Height (Pivot pin)	in. (mm)	111.2 (2824)
Clearance w/Attachment Dump	in. (mm)	85.5 (2172)
Reach @ Maximum Height	in. (mm)	26.1 (662)
Maximum Dump Angle	deg.	46
Reach w/Attachment on Ground	in. (mm)	78.1 (1985)
Maximum Rollback Angle	deg.	42
Digging Depth (When Bucket is Level)	in. (mm)	8.4 (213)
Overall Height in Carry Position	in. (mm)	55.7 (1414)
Material Bucket Width/Weight	in.(mm)/lbs(kg)	72 (1830) / 331(150)
Lift Capacity (Pivot pin)	lbs.(kg)	2275 (1032)
Lift Capacity (Pivot pin @ 1.5m)	lbs.(kg)	2864 (1299)
Breakout Force (500mm forward)	lbs.(N)	3102 (13798)
Raising Time to Full Height w/out Load	sec.	4.4
Lowering Time w/out Load (powerdown)	sec.	3.0
Attachment Rollback Time	sec.	2.4
Attachment Dumping Time	sec.	1.9
Rated Flow	gpm (L/min)	9.5 (35.8)

*Measures taken with Quick Coupler





PERFORMANCE MATCHED KUBOTA-BUILT BH92 BACKHOE (ROPS ONLY)

BH92 backhoe is performance-matched with the MX Series to deliver more power and greater capacity with over 9 feet of digging depth. Attaching and detaching is quick and simple. The full flat deck operator station optimizes comfort while the optional hydraulic thumb increases versatility of the backhoe.

EASY TO REMOVE

The less time you spend between jobs, the more productive you are. The BH92 backhoes are equipped with a quick attach/detach mounting system. This makes installation and removal easy so you can quickly move on to your next job.

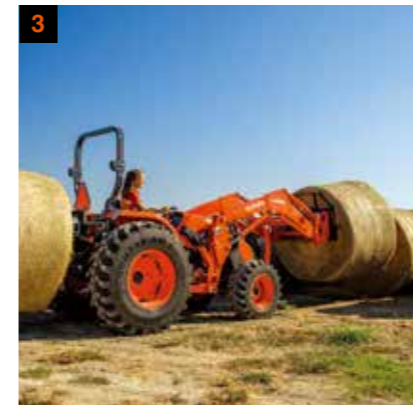
DUAL SWING CYLINDERS WITH CUSHIONING VALVES

Standard dual swing cylinders allow full boom swinging capability from left to right. The cushioning valves increase operator comfort during backhoe operation by absorbing the impact shock from swinging the boom from side to side.

BH92 BACKHOE SPECIFICATIONS*

Matching Tractor		MX4900/MX5400 MX6000
Transport height	in. (mm)	100.1 (2542)
Stabilizer spread transport	in. (mm)	70.99 (1803)
Ground clearance	in. (mm)	12.7 (323)
Digging depth, 2ft. flat bottom	in. (mm)	109.8 (2789)
Loading height	in. (mm)	84.3 (2141)
Reach from swing pivot	in. (mm)	150.4 (3819)
Swing pivot to rear axle center line	in. (mm)	42.1 (1069)
Bucket rotation	deg.	180

*Not available on Cab models.



VERSATILITY TO DO MORE

The Kubota MX Series comes with a wide range of performance matched implements and attachments. They are designed to work seamlessly with Kubota equipment to take on your toughest farming, municipality, snow removal, and property maintenance tasks. Kubota implements are built to work in perfect harmony with the MX, so you'll have the power to haul, dig, mow, snow-blow from spring to winter – and everything in between.

1. ROTARY CUTTER
2. PALLET FORK
3. BALE SPEAR
4. GRAPPLE BUCKET
5. GRADING SCRAPER
6. REAR SNOW BLOWER
7. ARENA GRADER

...AND MANY MORE!

Learn more about Kubota's full implement range by visiting kubota.ca