



For Earth, For Life  
**Kubota**

**VS**

**KUBOTA PENDULUM SPREADERS  
KUBOTA  
VS SERIES**

Pendulum spreaders with a working width ranging from 3' to 49' (1-15 metres)





**The unique  
pendulum  
spreader  
range**

Kubota's pendulum spreaders are the premier machines for all precision spreading applications. Wherever the demand, this unique machine has unmatched spreading quality, while still remaining user friendly. The pendulum's unique side to side spout movement ensures that the application rate is identical on either side of the machine, resulting in an excellent overlap.





# The unique Kubota pendulum spreader range

## Control systems

The Kubota VS spreaders are available with manual control, hydraulic remote control from the tractor cabin or electronic control from the tractor cabin with the Varimeter PS-ED II.



### VS 400/500

Working width: 3'-49" (1-15 metres)  
Hopper capacity: 14.1-17.7 ft<sup>3</sup> (400-500 litres)



### VS 600/800/1000

Working width: 3'-49" (1-15 metres)  
Hopper capacity: 21.2-35.3 ft<sup>3</sup> (600-800-1000 litres)



### VS 220/330

Working width: 3'-49" (1-15 metres)  
Hopper capacity: 7.8-11.7 ft<sup>3</sup> (220-330 litres)



### VS 400VITI/500VITI

Working width: 3'-49" (1-15 metres)  
Hopper capacity: 14.1-17.7 ft<sup>3</sup> (400-500 litres)



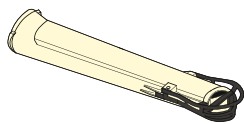
**VS 750/950/1150/1350/1650**

Working width: 3'-49' (1-15 metres)

Hopper capacity: 26.5-58.3 ft<sup>3</sup> (750-950-1150-1350-1650 litres)

**A wide variety of applications and spreading spouts**

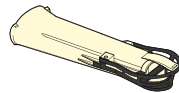
**STANDARD SPREADING SPOUT**



application:  
normal working widths  
working width: 29'-46' (9-14m)



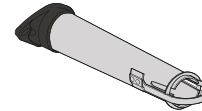
**SHORT SPREADING SPOUT**



application:  
small working widths  
working width: 13'-26' (4-8m)



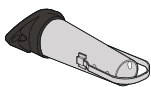
**SALT/GRIT SPREADING SPOUT (long)**



application:  
normal and road building/  
salt applications  
working width: 19'-39' (6-12m)



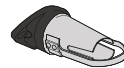
**SALT/GRIT SPREADING SPOUT (medium)**



application:  
road building/salt application  
on icy roads and pathways  
working width: 16'-19' (5-6m)



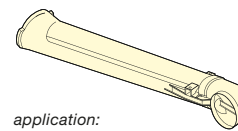
**SALT/GRIT SPREADING SPOUT (short)**



application:  
road building/salt application  
on icy roads and pathways  
working width: 6.5'-13' (2-4m)



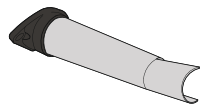
**BOUNDARY SPOUT**



application:  
prevents fertilizer from  
spreading into ditches or hedges  
working width: 6.5'-19' (2-6m)



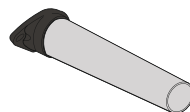
**RIGHT SIDE SPREADING SPOUT**



application:  
fish-farms, spreading on dikes  
working width: 13'-19' (4-6m)



**BAND SPREADING SPOUT (long)**



application:  
orchards, vineyard  
working width: 6.5'-26' (2-8m)



**BAND SPREADING SPOUT (short)**



application:  
pesticides  
working width: 2.5'-15' (0.75-4.5m)





# Symmetric spread pattern for optimal overlap



### Minimum wind influence on the spreading pattern

The side to side motion of the spreader spout ensures fertilizer is spread left and right, not to the front. This prevents the tractor from getting covered with fertilizer when wind is a factor.

### Easy setting of the application rate

A plastic scale on the VS spreader allows for continuous adjustment of the material application rate of pounds per acre, minimizing risk of spreading errors. In addition, a spreading chart and dial help to determine the optimal quantity of material for each working width and forward speed.

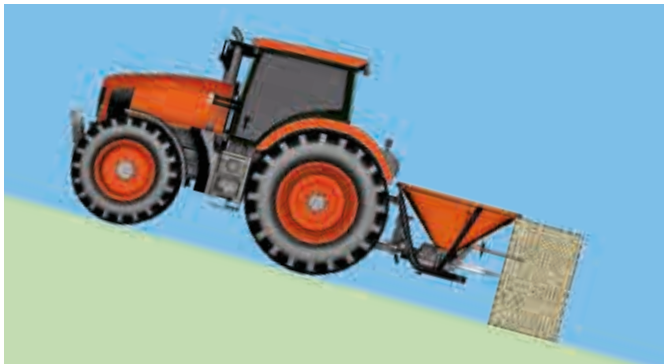


Easy setting of the application rate

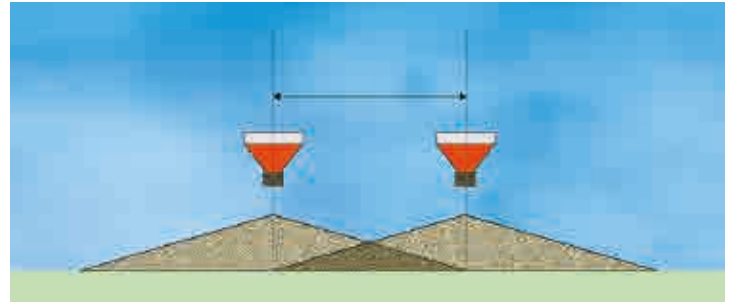
### Built for durability

The VS spreaders from Kubota:

- Metering disc is made from stainless steel
- Optimised frame with no corners where fertilizer can accumulate
- Glass fiber re-enforced polyester or polyethylene hopper which can withstand aggressive types of fertilizer
- The unique Duracoat powder painting system for exceptional corrosion resistance of spreading unit and frame
- Bearings of the spreading unit have easily accessible grease zerks



Accurate spreading also on slopes



The cone shaped spreading pattern reaches from tractor wheel track to tractor wheel track giving total overlap of the spreading surface



Disc spreader

Pendulum spreader

### Simple calibration

A specially designed calibration container eliminates the need to remove the spout for calibration.



Easy calibration

### Gentle handling of fertilizer

The agitator ensures an even material feed to the spreading unit, so there's no risk of the fertilizer being crushed.



Agitator ensures even feed of the fertilizer

### Low filling height

Refilling fertilizer is easy. The hopper can be easily moved under a tipping trailer or silo or filled by hand.



Easy filling



VS220-330

# Ideal for use on golf courses



## VS220-330

The VS220/330 is the smallest model in the Kubota pendulum spreader range. This spreader is ideal for use on golf courses, sport fields, as well as many horticulture and municipal applications.

A variety of spouts for different applications and working widths makes it possible to spread fertilizer, seeds, sand, salt, pellets or any other granular product up to 46' (14 metres).

The VS220 has a tough polyethylene hopper with a standard capacity of 7.8 ft<sup>3</sup> (220 litres) and an optional extension rim to create 11.7 ft<sup>3</sup> (330 litres).





*The compact design in combination with the short spreading surface provides an optimal spreader for working in small areas.*



VS400-500-VS400-500VITI

# A truly multi-functional s



# spreader



## **VS400-500**

With hopper capacities of 14.1 ft<sup>3</sup> (400 litres) and 17.7 ft<sup>3</sup> (500 litres) this spreader is the ideal solution for small farms and special applications. These spreaders are capable of spreading up to 46' (15 metres) when a 750/100 rpm tractor PTO is used.



## **VS400-500VITI**

Designed specifically for spreading material in orchards and vineyards, the VS400/500VITI has a hopper width of only 45" (115cm). In addition, these spreaders are available in both 14.1 ft<sup>3</sup> (400 litres) or 17.7 ft<sup>3</sup> (500 litres) hopper capacities. An optional spout for band spreading is available.

*The VITI models have a narrow hopper width, designed specifically for orchards and vineyards.*





VS600-800-1000-750-950-1150-1350-1650

# Working widths up to 49 feet (15 metres)



**Kubota pendulum spreaders are the primer choice for precision spreading applications.**

The standard working width of the VS spreader ranges from 3' (1 metre) to 46' (14 metres).

When you increase the PTO speed of the tractor from 540 rpm to 620 rpm the working width can be increased to 49' (15 metres).

VS spreaders feature precision application rate controls, quick change spouts, low filling heights and easy maintenance.

*These versatile spreaders are ideal for vineyards, golf courses and general farm applications.*





# Winter maintenance



# Sand, salt or grit spreading

The Kubota VS spreaders are easy to operate and are ideal for sand, salt and grit applications. From large parking lots, to sidewalks, Kubota offers you the equipment you need to battle winter weather.

## VS spreader range

For sand, salt and grit spreading, the VS spreader needs to be equipped with an optional stainless steel spreading spout. Spreading widths ranging from 6.5' - 39' (2-12 metres) are available, depending on the type and size of spreading spout used.

For spreading material such as sand, salt or grit, an extra large agitator and stainless steel insert is available to ensure protection against excessive wear.

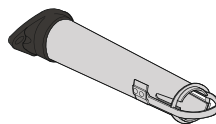


Stainless steel spreading spout (optional)



Stainless steel hopper insert with agitator (optional)

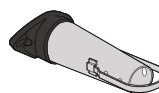
### SALT/GRIT SPREADING SPOUT (long)



application:  
normal and road building/  
salt applications  
working width: 19'-39' (6-12m)



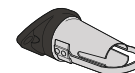
### SALT/GRIT SPREADING SPOUT (medium)



application:  
road building/salt application  
on icy roads and pathways  
working width: 16'-19' (5-6m)



### SALT/GRIT SPREADING SPOUT (short)



application:  
road building/salt application  
on icy roads and pathways  
working width: 6.5'-13' (2-4m)





# Optional equipment

### Lighting set

For all VS spreaders an optional lighting set is available. Reflector decals are available for safe transport.



Lighting set and reflector decals

### Fine application kit

Shuts two of the three openings of the metering device for the application of small quantities of fine seeds.



Fine application kit

### Pivoting wheels

This set of pivoting wheels allows the spreader to be easily moved when detached from the tractor.



Pivoting wheels

### Agitator

The agitator ensures an even material feed to the spreading unit. A safety grid protects the agitator.

### Grid

A grid fitted inside the hopper prevents lumps of fertilizer penetrating the feed mechanism.

### Calibration container

Allows calibration tests to be performed with spout in place.

### Hopper extensions

To increase hopper capacity, 3.5 ft<sup>3</sup> (100 litres), 3.9 ft<sup>3</sup> (110 litres), 7.1ft<sup>3</sup> (200 litres), 10.6ft<sup>3</sup> (300 litres), 14.1ft<sup>3</sup> (400 litres), 21.2 ft<sup>3</sup> (600 litres) and 31.7 ft<sup>3</sup> (900 litres) hopper extensions are available (varies by model).

### Hydraulic remote control

Allows the metering disc to be opened and closed from the driver's seat (one single acting control valve required).



Hydraulic remote control



Set of pivoting wheels



Calibration container

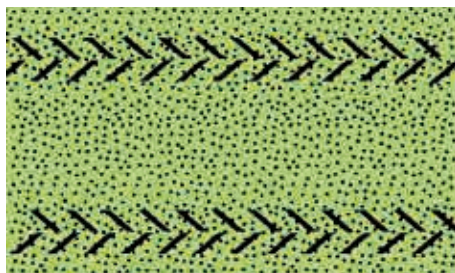


Agitator with safety grid and stainless steel insert

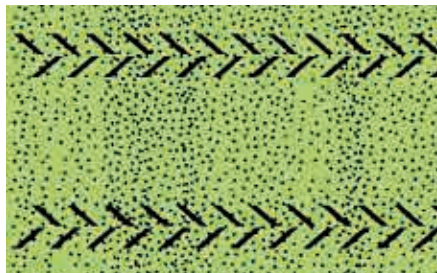


### Varimeter PS-ED II on-board computer

The Varimeter on-board computer allows the metering disc to be adjusted from the tractor cab. Forward speed is continuously checked by a wheel sensor or by radar and transmitted to the Varimeter system which in turn ensures a constant application rate whatever the forward speed. The consequence is an absolutely uniform spreading pattern in the direction of travel. The quantity of fertilizer can be increased or decreased at any time during work.



Spreading pattern with PS-ED II



Spreading pattern without PS-ED II



Varimeter PS-ED II



Hopper cover

### Hopper cover

Protects the fertilizer from moisture and dirt. Hopper cover can be easily folded for filling.



Tramline cylinder

### Tramline cylinder

Using the tramline cylinder the spreader is inclined, allowing spreading up to the border of the field.



# Spreader Competence Center

## Kubota Spreader Competence Center

Kubota spreaders are reliable, easy to operate and have outstanding accuracy.

A fertilizer spreader can only be set accurately for rate and overlap using the settings provided by the manufacturer.

The Spreader Competence Center is now using the most modern technology available, allowing the measurement of complete overlap patterns in 3D.

Instead of only measuring the spreading pattern in one line corresponding to the working width, this new technology creates a full pattern showing a complete 3D spreading profile of the fertilizer.

The 3D spread pattern is achieved using a spreader which is mounted on the test rig which rotates the machine through 280°. Continuous measurement at a frequency of 5 HZ over the 80 collecting trays, which are all individually equipped with weigh cells, provide the ultimate in testing accuracy. A single test run provides more than 30 000 measurements! The result is a very precise spread pattern analysis with a high degree of predictability for setting changes to suit different widths and application rates. This allows faster testing of the various types of fertilizer, results in using less fertilizer; and improves quality for better protection of our environment.

The 197' (60 metres) long test hall has underfloor heating; maintains the humidity at 60% (allowing testing throughout the year); and can accommodate testing of working widths of more than 177' (54 metres),



## Spreading charts

Exact advice for each Kubota spreader at any spreading width, application rate, driving speed.

Direct access to most recent test results at [www.kubotaspreadingcharts.com](http://www.kubotaspreadingcharts.com) or download the spreading charts Application from the App Store or Google Play Store.

# Technical data

VS models	220*	330*	400*	500*	400 VITI*	500 VITI*	600*	800*	1000*	750**	950**	1150**	1350**	1650**	
<b>Basic unit</b>	220		400			400 VITI		600		600		750		750	
<b>1. Technical specifications</b>															
Hopper capacity (ft³/litres)	7.8/220	11.7/330	14.1/400	17.7/500	14.1/400	17.7/500	21.2/600	28.3/800	35.3/1000	26.5/750	33.5/950	40.6/1150	47.8/1350	58.3/1650	
Hopper width (inches/cm)	42/106	42/106	57/145	57/145	45/115	45/115	69/175	69/175	69/175	69/175	69/175	69/175	69/175	69/175	
Filling height (inches/cm)	30/77	39/99	35/89	40/101	35/89	40/101	38/96	42/106	46/116	38/96	42/106	46/116	49/125	56/141	
Weight (lbs/kg)	183/83	187/85	267/121	278/126	267/121	278/126	287/130	342/155	364/165	333/151	348/158	377/171	412/187	406/406	
PTO speed (rpm)	540	540	540	540	540	540	540	540	540	540	540	540	540	540	
3-point linkage category (CAT)	1	1	1&2	1&2	1&2	1&2	2	2	2	2	2	2	2	2	
<b>2. Controls</b>															
Manual control	○	○	○	○	○	○	○	○	○	○	○	○	○	○	
Hydraulic control	○	○	○	○	○	○	○	○	○	○	○	○	○	○	
PS-ED II spreading computer	○	○	○	○	○	○	○	○	○	○	○	○	○	○	
<b>3. Equipment (factory fitted)</b>															
PTO overload clutch	●	●	●	●	●	●	●	●	●	●	●	●	●	●	
Nylon spreading spout (29'-46'/9-14m)	●	●	●	●	●	●	●	●	●	●	●	●	●	●	
<b>4. Accessories (also loose available)</b>															
<b>4.1. Spreading spouts</b>															
Nylon spreading spout (13'-26'/4-8m)	○	○	○	○	○	○	○	○	○	○	○	○	○	○	
Nylon boundary spreading spout (6.5'-19'/2-6m)	○	○	○	○	○	○	○	○	○	○	○	○	○	○	
Stainless steel spreading spout (6.5'-13'/2-4m)	○	○	○	○	○	○	○	○	○	○	○	○	○	○	
Stainless steel spreading spout (16'-19'/5-6m)	○	○	○	○	○	○	○	○	○	○	○	○	○	○	
Stainless steel spreading spout (13'-19'/6-12m)	○	○	○	○	○	○	○	○	○	○	○	○	○	○	
Stainless steel right side spreading spout (13'-19'/4-6m)	○	○	○	○	○	○	○	○	○	○	○	○	○	○	
Stainless steel band spreading spout (3'-4'/0.75-4.5m)	○	○	○	○	○	○	○	○	○	○	○	○	○	○	
Stainless steel band spreading spout (6.5'-26'/2-8m)	○	○	○	○	○	○	○	○	○	○	○	○	○	○	
<b>4.2. Safety equipment</b>															
Reflector decal	○	○	○	○	○	○	○	○	○	○	○	○	○	○	
Lighting set	○	○	○	○	○	○	○	○	○	○	○	○	○	○	
<b>4.3. Border spreading</b>															
Tramline kit	-	-	-	-	-	-	○	○	○	○	○	○	○	○	
<b>4.4. Other</b>															
Grid	○	○	○	○	○	○	○	○	○	○	○	○	○	○	
Agitator (always in combination with grid and insert)	○	○	○	○	-	-	○	○	○	○	○	○	○	○	
Stainless steel insert	○	○	○	○	○	○	○	○	○	○	○	○	○	○	
Hopper cover	-	○	○	○	○	○	○	○	○	○	○	○	○	○	
Key to adjust spreading width	○	○	○	○	○	○	○	○	○	○	○	○	○	○	
Fine application kit	○	○	○	○	○	○	○	○	○	○	○	○	○	○	
Parking wheels	-	-	-	-	-	-	○	○	○	○	○	○	○	○	
<b>4.5. Accessories for PS-ED II</b>															
Calibration container	○	○	○	○	○	○	○	○	○	○	○	○	○	○	
Wheel/PTO/start-stop sensor	○	○	○	○	○	○	○	○	○	○	○	○	○	○	
Wheel ring 13.8'/350mm or 16.5'/420mm	○	○	○	○	○	○	○	○	○	○	○	○	○	○	
Battery cable 3 pin	○	○	○	○	○	○	○	○	○	○	○	○	○	○	

● = standard ○ = optional \* Both powders and granules \*\* Granules only

Descriptions, specifications, images, colours and accessories contained in this brochure are based on information believed to be correct at the time this publication was approved for printing. Although descriptions, specifications, images, colours and accessories are believed to be correct, accuracy cannot be guaranteed. Errors and omissions excepted. Kubota Canada Ltd. reserves the right to change the stated specifications, colours and accessories without notice. Some items shown may be optional and some products shown may not be available at all dealerships. This brochure is for informational purposes only. To the fullest extent permitted by law, Kubota disclaims all representations and warranties, express or implied, as well as any liability from the use of this brochure. For complete warranty, safety and product information, consult your local Kubota dealer and the operator's manual. Power (HP/KW) and other specifications are based on various standards or recommended practices. For your safety, Kubota strongly recommends the use of a Rollover Protective Structure (ROPS) and seat belt in almost all applications. This brochure is intended for the Canadian market only. For information regarding Kubota products or services outside these areas, see Kubota Corporation's global website. Kubota does not provide parts, warranty or service for any product which is re-sold or retailed in any country other than the country for which the product(s) were designed or manufactured.

©2022 Kubota Canada Ltd.



**KUBOTA CANADA LTD.**

Head office: 1155 Kubota Drive, Pickering, Ontario, L1X 0H4