

# Subscribe to KubotaNOW Telematics and revolutionize your equipment management\*

## View your entire fleet at a glance

Know what is happening with your machine at all times. Check your battery, fuel and DEF levels, coolant and hydraulic oil temperatures, whether your machine is on, off, running or stationary.

## Advanced location tracking and geofencing

Establish geofencing parameters and receive alerts when your equipment moves into or out of your custom boundaries.

## Get connected with 3 years of KubotaNOW Telematics service included\*

KubotaNOW Telematics includes service for three years after purchase. Renewal after the initial three years is subject to owner discretion.

\*KubotaNOW Telematics is available for purchase on select Kubota equipment. KubotaNOW features may vary by model. KubotaNOW Telematics features are only available with KubotaNOW Telematics-equipped machines.

## Get proactive maintenance alerts

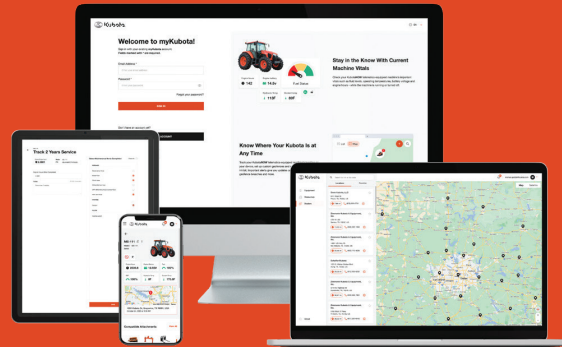
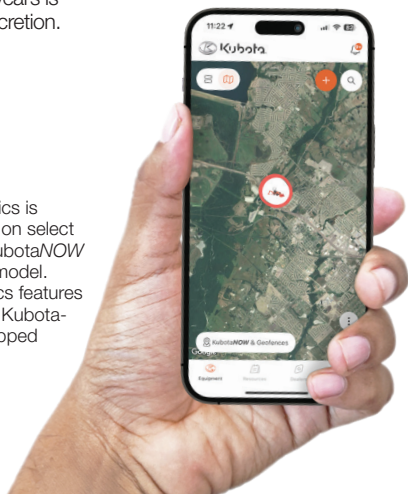
Stay ahead of maintenance with tailored notifications for your equipment, detailing upcoming service requirements. Be notified of upcoming maintenance before you need it.

## Enhanced security and restart inhibit

Locate your equipment quickly with real-time tracking or remotely disable start-up in the unfortunate event of theft.

## Fleet management integration

Use third party fleet management software to easily access and view KubotaNOW Telematics.



Scan to  
download myKubota



# Kubota

Find out more about the myKubota app and KubotaNOW Telematics

mykubota.com (US) • mykubota.app (CAN)

# KubotaNOW Telematics

## Supported Models & Functionality





# KubotaNOW Telematics Supported Models

Compact Track Loaders,  
Skid Steers & Wheel Loaders

| Model                | GPS | Geofence | Restart Inhibit | Alerts | Machine Status | Battery Level | Fuel Level | DEF Level | Coolant Temp | Hydraulic Temp |
|----------------------|-----|----------|-----------------|--------|----------------|---------------|------------|-----------|--------------|----------------|
| SVL65 / 75-2         | ✓   | ✓        | ✓               | ✓      | ✓              | ✓             | ✓          | ✓         | ✓            | ✓              |
| SVL75-3 <sup>1</sup> | ✓   | ✓        | ✓               | ✓      | ✓              | ✓             | ✓          | ✓         | ✓            | ✓              |
| SVL95-2S             | ✓   | ✓        | ✓               | ✓      | ✓              | ✓             | ✓          | ✓         | ✓            | ✓              |
| SVL97-3              | ✓   | ✓        | ✓               | ✓      | ✓              | ✓             | ✓          | ✓         | ✓            | ✓              |
| SSV65                | ✓   | ✓        | ✓               | ✓      | ✓              | ✓             | ✓          | ✓         | ✓            | ✓              |
| SSV75                | ✓   | ✓        | ✓               | ✓      | ✓              | ✓             | ✓          | ✓         | ✓            | ✓              |
| R430                 | ✓   | ✓        | ✓               | ✓      | ✓              | ✓             | ✓          | ✓         | ✓            | ✓              |
| R530                 | ✓   | ✓        | ✓               | ✓      | ✓              | ✓             | ✓          | ✓         | ✓            | ✓              |
| R630                 | ✓   | ✓        | ✓               | ✓      | ✓              | ✓             | ✓          | ✓         | ✓            | ✓              |
| R540                 | ✓   | ✓        | ✓               | ✓      | ✓              | ✓             | ✓          | ✓         | ✓            | ✓              |
| R640                 | ✓   | ✓        | ✓               | ✓      | ✓              | ✓             | ✓          | ✓         | ✓            | ✓              |

CAN-enabled features

Updated March 2024 - Kubota Tractor Corporation  
 1. KubotaNOW Telematics-Ready, no harness required  
 2. SN < 35058 / (CA) Y1312, use harness V6711  
 SN > 50020 / (CA) Z0001, use harness V6716

## Excavators

| Model                  | GPS | Geofence | Restart Inhibit | Alerts | Machine Status | Battery Level | Fuel Level | DEF Level | Coolant Temp | Hydraulic Temp |
|------------------------|-----|----------|-----------------|--------|----------------|---------------|------------|-----------|--------------|----------------|
| U10-5                  | ✓   | ✓        | ✓               | ✓      | ✓              | ✓             | ✓          | ✓         | ✓            | ✓              |
| U17                    | ✓   | ✓        | ✓               | ✓      | ✓              | ✓             | ✓          | ✓         | ✓            | ✓              |
| U17-5                  | ✓   | ✓        | ✓               | ✓      | ✓              | ✓             | ✓          | ✓         | ✓            | ✓              |
| U25                    | ✓   | ✓        | ✓               | ✓      | ✓              | ✓             | ✓          | ✓         | ✓            | ✓              |
| U27-4                  | ✓   | ✓        | ✓               | ✓      | ✓              | ✓             | ✓          | ✓         | ✓            | ✓              |
| U35-4                  | ✓   | ✓        | ✓               | ✓      | ✓              | ✓             | ✓          | ✓         | ✓            | ✓              |
| U48-5 <sup>1</sup>     | ✓   | ✓        | ✓               | ✓      | ✓              | ✓             | ✓          | ✓         | ✓            | ✓              |
| U55-4                  | ✓   | ✓        | ✓               | ✓      | ✓              | ✓             | ✓          | ✓         | ✓            | ✓              |
| U55-5 <sup>1</sup>     | ✓   | ✓        | ✓               | ✓      | ✓              | ✓             | ✓          | ✓         | ✓            | ✓              |
| K008T4                 | ✓   | ✓        | ✓               | ✓      | ✓              | ✓             | ✓          | ✓         | ✓            | ✓              |
| K008-5                 | ✓   | ✓        | ✓               | ✓      | ✓              | ✓             | ✓          | ✓         | ✓            | ✓              |
| KX018-4                | ✓   | ✓        | ✓               | ✓      | ✓              | ✓             | ✓          | ✓         | ✓            | ✓              |
| KX033-4                | ✓   | ✓        | ✓               | ✓      | ✓              | ✓             | ✓          | ✓         | ✓            | ✓              |
| KX040-4                | ✓   | ✓        | ✓               | ✓      | ✓              | ✓             | ✓          | ✓         | ✓            | ✓              |
| KX040-5                | ✓   | ✓        | ✓               | ✓      | ✓              | ✓             | ✓          | ✓         | ✓            | ✓              |
| KX057-4/5 <sup>1</sup> | ✓   | ✓        | ✓               | ✓      | ✓              | ✓             | ✓          | ✓         | ✓            | ✓              |
| KX080-4                | ✓   | ✓        | ✓               | ✓      | ✓              | ✓             | ✓          | ✓         | ✓            | ✓              |
| KX080-5 <sup>1</sup>   | ✓   | ✓        | ✓               | ✓      | ✓              | ✓             | ✓          | ✓         | ✓            | ✓              |
| KX71-3S                | ✓   | ✓        | ✓               | ✓      | ✓              | ✓             | ✓          | ✓         | ✓            | ✓              |

CAN-enabled features

## RTVs & Tractors

| Model                  | GPS | Geofence | Restart Inhibit | Alerts | Machine Status | Battery Level | Fuel Level | DEF Level | Coolant Temp | Hydraulic Temp |
|------------------------|-----|----------|-----------------|--------|----------------|---------------|------------|-----------|--------------|----------------|
| Sidekick <sup>2</sup>  | ✓   | ✓        | ✓               | ✓      | ✓              | ✓             | ✓          | ✓         | ✓            | ✓              |
| RTV-XG850 <sup>2</sup> | ✓   | ✓        | ✓               | ✓      | ✓              | ✓             | ✓          | ✓         | ✓            | ✓              |
| RTV-X900               | ✓   | ✓        | ✓               | ✓      | ✓              | ✓             | ✓          | ✓         | ✓            | ✓              |
| RTV-X1100C             | ✓   | ✓        | ✓               | ✓      | ✓              | ✓             | ✓          | ✓         | ✓            | ✓              |
| RTV-X1120              | ✓   | ✓        | ✓               | ✓      | ✓              | ✓             | ✓          | ✓         | ✓            | ✓              |
| RTV-X1140              | ✓   | ✓        | ✓               | ✓      | ✓              | ✓             | ✓          | ✓         | ✓            | ✓              |
| BX23S                  | ✓   | ✓        | ✓               | ✓      | ✓              | ✓             | ✓          | ✓         | ✓            | ✓              |
| BX1880                 | ✓   | ✓        | ✓               | ✓      | ✓              | ✓             | ✓          | ✓         | ✓            | ✓              |
| BX2380                 | ✓   | ✓        | ✓               | ✓      | ✓              | ✓             | ✓          | ✓         | ✓            | ✓              |
| BX2680                 | ✓   | ✓        | ✓               | ✓      | ✓              | ✓             | ✓          | ✓         | ✓            | ✓              |
| M6060                  | ✓   | ✓        | ✓               | ✓      | ✓              | ✓             | ✓          | ✓         | ✓            | ✓              |
| M7060                  | ✓   | ✓        | ✓               | ✓      | ✓              | ✓             | ✓          | ✓         | ✓            | ✓              |
| M4                     | ✓   | ✓        | ✓               | ✓      | ✓              | ✓             | ✓          | ✓         | ✓            | ✓              |
| M5                     | ✓   | ✓        | ✓               | ✓      | ✓              | ✓             | ✓          | ✓         | ✓            | ✓              |
| M6                     | ✓   | ✓        | ✓               | ✓      | ✓              | ✓             | ✓          | ✓         | ✓            | ✓              |
| M7                     | ✓   | ✓        | ✓               | ✓      | ✓              | ✓             | ✓          | ✓         | ✓            | ✓              |
| M8                     | ✓   | ✓        | ✓               | ✓      | ✓              | ✓             | ✓          | ✓         | ✓            | ✓              |

CAN-enabled features