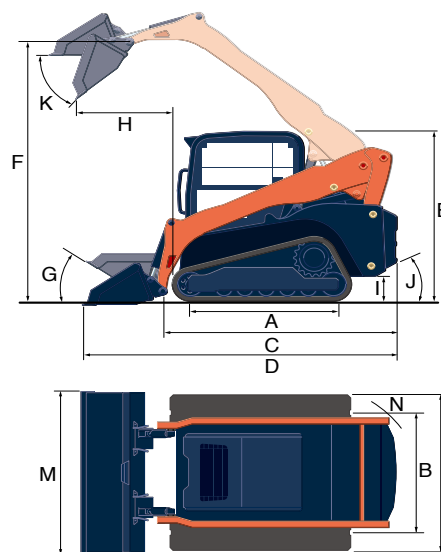


Specifications

Model		SVL97-3		
Type of operator station		Closed CAB		
Engine	Model	V3800-TIE5-L		
	Output (SAE J1995 gross)	HP (kW)/rpm	96.4 (71.9) / 2500	
	Output (SAE J1349 net)	HP (kW)/rpm	94.9 (70.8) / 2500	
	Displacement	cu.in. (cc)	230.0 (3769)	
	Cylinders		4	
	Bore × Stroke	in. (mm)	3.9 (100) × 4.7 (120)	
	Aspiration		Turbocharged	
Loader performance	Rated operating capacity-35% tipping load	lbs. (kg)	3459 (1569)	
	Rated operating capacity-50% tipping load	lbs. (kg)	4942 (2242)	
	Tipping load	lbs. (kg)	9884 (4483)	
	Breakout force	Bucket	lbf. (kg)	7646 (3468)
		Lift arm	lbf. (kg)	5277 (2394)
Lift arm path			Vertical	
Undercarriage	Track width	Standard	in. (mm)	17.7 (450)
	Ground pressure	Standard	psi	4.8
	Track rollers (per side)			5
	Track ground contact length		in. (mm)	65.6 (1667)
	Travel speed	Low	mph (km/h)	5.5 (8.9)
		High	mph (km/h)	8.4 (13.5)
Traction force		lbf. (kgf)	13174.7 (5976)	
Hydraulic system	Aux. hydraulic flow	Std. / High flow	gpm (ℓ/min.)	23.8 (90) / 41.2 (156)
	Aux. hydraulic pressure		psi (kgf/cm ²)	3553 (24.5)
Service refill capacities	Hydraulic system		gal. (ℓ)	10.6 (40.2)
	Fuel tank		gal. (ℓ)	30.6 (115.7)
	DEF tank		gal. (ℓ)	3.4 (12.7)
Operating weight (Includes operator weight 165 lbs.)		lbs. (kg)	11929 (5411)	

Dimensions

A	Length of track on ground	in. (mm)	65.6 (1667)
B	Track gauge	in. (mm)	59.5 (1512)
C	Length w/o bucket	in. (mm)	123.7 (3141)
D	Length w/bucket on ground	in. (mm)	153.6 (3901)
E	Height to top of cab	in. (mm)	83.1 (2112)
F	Bucket hinge pin height at max. lift	in. (mm)	128.5 (3264)
G	Rollback angle at carry position	degree	28
H	Reach at max. lift and dump	in. (mm)	40.7 (1034)
I	Ground clearance	in. (mm)	10.9 (278)
J	Departure angle	degree	30.6
K	Max. dump angle	degree	43
L	Vehicle width standard track	in. (mm)	77.2 (1962)
M	Width with bucket	in. (mm)	81 (2057)
N	Turning radius from center-machine rear	in. (mm)	63.7 (1618)



Kubota Canada Ltd. reserves the right to change the stated specifications without notice. This brochure is for descriptive purposes only and reasonable efforts were used to set forth the contained information; some items shown may be optional and some products shown may not be available at all dealerships. Kubota disclaims all representations and warranties, express or implied, or any liability from the use of this brochure. For complete warranty, safety and product information, consult your local Kubota dealer and the operator's manual. Power (HP/KW) and other specifications are based on various standards or recommended practices. For your safety, Kubota strongly recommends the use of a Rollover Protective Structure (ROPS) and seat belt in almost all applications. This brochure is intended for Canada only. For information regarding Kubota products or services outside these areas, see Kubota Corporation's global web site. Kubota does not provide parts, warranty or service for any Product which is re-sold or retailed in any country other than the country for which the Product(s) were designed or manufactured.



©2024 Kubota Corporation



KUBOTA CANADA LTD.

Head Office:
1155 Kubota Drive, Pickering, Ontario L1X 0H4, Canada
TEL: (905) 294-7477

Visit our web site at: www.kubota.ca



For Earth, For Life
Kubota

SVL

KUBOTA COMPACT TRACK LOADER SVL97-3

Kubota performance, comfort and reliability allow you to work faster, longer and more efficiently.





What do you want? More productivity, more comfort, and less downtime!

You've got it. Here's the Compact Track Loader you've been waiting for. With a new hydraulic system and innovative features, the SVL97-3 delivers what the crowd wants.

- **OUTSTANDING PERFORMANCE AND PRODUCTIVITY**
- **SPACIOUS AND COMFORTABLE WORKSPACE**
- **ADVANCED MULTIFUNCTION OPERABILITY**
- **SIMPLE SERVICEABILITY**

COMPACT TRACK LOADER

SVL97-3

Engine gross horsepower (SAE J 1995): 96.4 HP (71.9 kW)
Rated operating capacity (35% of tipping load): 3459 lbs (1569 kg)
Rated operating capacity (50% of tipping load): 4942 lbs (2242 kg)
Bucket breakout force: 7646 lbs (3468 kg)
Operating weight (Closed Cab, Including operator weight 165 lbs): 11929 lbs (5411 kg)

Powerful Hydraulic System

Load Sensing System

The Load Sensing System and exceptional control valve provide the pushing and driving force you need, even during simultaneous attachment operation. Plenty of power to travel on slopes and handle attachments means you'll get the job done faster.

Adjustable Maximum Oil Flow Control

Maximum AUX flow can be set from the touch panel and is based on your attachment, which ensures the optimal flow rate for every job you do. The attachment icon will help you to identify which preset is for which attachment.

Electronic Travel Torque Management

The Electronic Travel Torque Management System lets you work faster with more power. The ECU constantly monitors the load of the machine to optimize hydraulic pump output for smoother operation that keeps the engine running to get the job done.

Hydraulic Pilot Control

This helps ensure consistent oil flow, allowing for smooth and dependable operator control and stability.

Shock Reduction During Operation

Smoothly shifts gears for smooth start-ups.

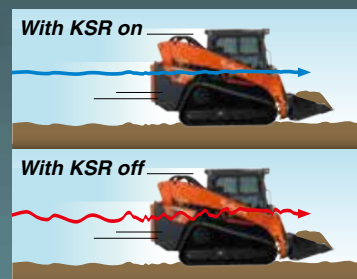
-3 SERIES STYLE KUBOTA PRODUCTIVITY

The SVL97-3 is ready to take on any job with its new hydraulic system, reliable Kubota engine, impressive travel performance, and efficient cooling system.

Traveling Features

Kubota Shockless Ride (KSR) (Option)

Kubota's ride control system (KSR) is now available for Kubota CTLs! It is a loader suspension that enhances comfortability and reduces spilling loads on rough terrain.



high, but before the machine starts to lose traction, it automatically shifts down for better low-range torque. Once the traction load is eased, it shifts back up automatically for high speed. Now you can just leave it in high speed regardless of the work!



Track Response

Operators can now change the sensitivity of their machine control response through the LCD panel. The SVL97-3 offers you a choice of three track response settings: Mild, Normal, and Quick.

Faster Two-speed Travel

Shift from low gear at 8.9 km/h (0.9 km/h faster than the SVL97-2) to high gear at 13.5 km/h (1.8 km/h faster) to get the job done quicker.

Auto-Shift

Auto shift allows machines to smoothly drive into large piles or push heavy loads and gives outstanding turning performance. The ECU is constantly monitoring the traction load. When the traction load gets

Built for Performance

Hinge Pin Height

The loader arm is designed to reach 128.5 inches (hinge pin height) making it easy to dump into almost any truck or trailer.



High-flow Hydraulics

Having high flow increases the hydraulic muscle for attachments that need more hydraulic horsepower. With this auxiliary hydraulic flow increases to 41.2 gpm. The coupler manifold has both 1/2" and 3/4" couplers.



Standard Self-leveling Function

This feature helps keep the bucket or fork in a horizontal position without manual adjustment while lifting. (It can be turned on or off with the click of a button.)

128.5" (3264 mm)



Kubota Engine

New Kubota Engine (Higher Maximum Torque)

A reliable 96.4 HP* Kubota engine provides power for most any job site task. New engine complies with Tier V emissions.

* Engine HP Gross (SAE J1995)

Auto Idling System

The SVL97-3 will shift to idle when the machine is not in use. Reduce engine RPM instinctively when high engine speed isn't needed. Move any control lever and the engine RPM immediately returns.

Common Rail System

The Common Rail System (CRS) electronically controls the fuel injection timing to optimize the fuel consumption.

SPACIOUS OPERATOR ROOM AND COMFORT

New Cab and technologies, and improved A/C Performance make working in the most demanding conditions a breeze.



One-Piece Sealed and Pressurized Cab

The new one piece cab helps prevent dirt, dust, rain, and other debris from entering the operator space. Furthermore, noise is kept down² to let you work for long hours with minimal fatigue.

²Based on ISO10263 comparison with the previous model.



New one-piece type

Conventional type

Heated Air Suspension Seat

Seat air suspension provides a comfortable ride that reduces fatigue during long workdays. Seat comes standard with heat, improving comfort on cold days.

Sliding Front Door

Kubota's traditional slide up front door can be opened regardless of the position of the bucket or loader arms. This allows for machine operation with the door open if desired.

Wide Cab Entrance

A wide entrance makes it easier to get in and out.

Spacious Interior

The spacious interior provides plenty of foot and elbow room and minimizes operator fatigue, even during long work hours.

LED Work Lights (Front and Rear)

LED lights allow you to work through the night or in the darkest building.

Forward Roof Window

The large roof window allows for outstanding upward visibility when dumping into containers, trucks or trailers.



Improved HVAC Performance^{*1}

Airflow has been improved for outstanding cooling and heating performance regardless of the temperature outside.

^{*1}Based on comparison with the previous model.

Technology

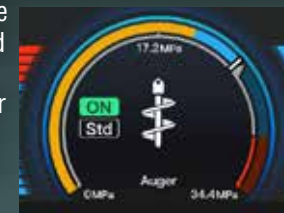
Color LCD Touchscreen with Jog Dial

The SVL97-3's color LCD touchscreen displays a wide range of functions to keep you in tune with the machine. This new screen features touch and jog dial controls and easy-to-read machine vital signs and alerts. It is positioned to the front right of the operator for excellent visibility and easy access.

Attachment Performance Monitor^{*3}

SVL97-3 has a feature to monitor AUX pressure level (PSI) on the LCD touchscreen. It helps to operate attachment based on the pressure level. The monitor will change when AUX is turned on.

^{*3}High flow only



- A. Machine Status (Shows enabled functions and alerts)
- B. Hydraulic Oil Temperature
- C. Coolant Temperature
- D. AUX Mode
- E. Fuel Level
- F. DEF level
- G. Menu Icons



Rear View Camera

The standard rearview camera displays on the touchscreen allows for better rearward visibility on the job site. The rear view can be set to display continuously or only when the in reverse.



Keyless Engine Start

The engine can be started by entering a 4-digit passcode on the LCD touchscreen and can store up to 51 individual user passwords. Lost keys are a thing of the past!



Radio with Bluetooth

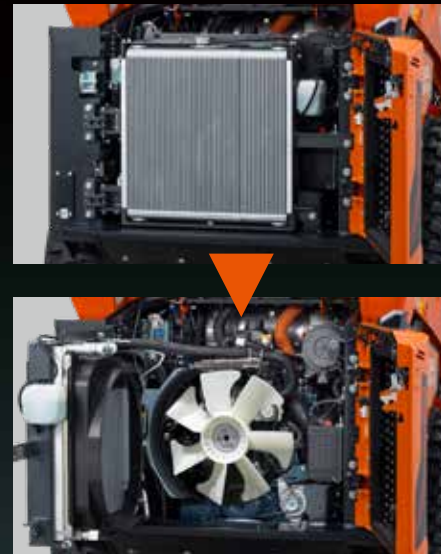
Our new our new integrated Bluetooth radio allows for seamless Bluetooth streaming and hands free calling.

MAINTENANCE

Enhanced engine access speeds up and simplifies routine maintenance.

New Swing-out Radiator

With the radiator out of the way, engine bay access is opened up for maintenance or clean out.



- A. SCR Muffler
- B. Coolant Tank
- C. Radiator
- D. Dual Element Air Cleaner
- E. Battery

Welded Mainframe and Under Carriage

1. Welded, Integrated Mainframe and Undercarriage

The undercarriage forms an integral part of the main frame for maximum durability.



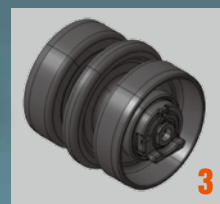
2. Kubota Original Rubber Tracks

Kubota's original rubber tracks offer outstanding durability. Furthermore, Kubota's original lug pattern helps prevent soil from accumulating and helps improve traction force.



3. Triple Flange Lower Track Rollers

A reliable triple flange design helps minimize the chance of detracking and helps improve stability. They are sealed and kept lubricated.



Tilt-up Cabin

The cab can be tilted 72° allowing easy access to the hydraulic pumps, valves, lines and hydraulic tank.



SIMPLIFIED



Engine Equipment and Features

1. Pre-cleaner

Removes dust and dirt from the air prior to reaching the air filter.



2. DEF Tank Cap

The DEF tank has been equipped with a lockable cover to prevent diesel fuel from mistakenly being poured into the tank.



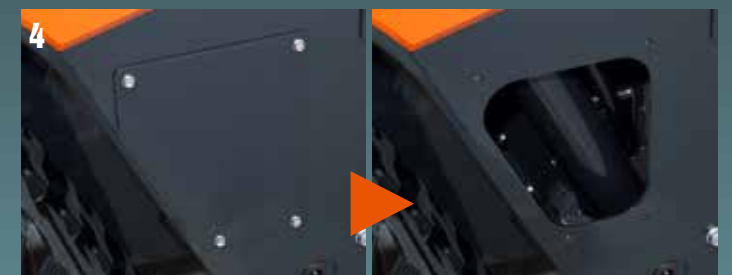
3. Fuel Fill Indicator

When refilling fuel, DEF, or hydraulic oil, a buzzer sounds to prevent overfilling and the potential hazards from fuel spills.



4. Side Window for Cleaning

Side panel can be removed easily and it makes easy access for removing debris inside the arm.



COMFORT MEETS CONVENIENCE

New Jog Dial and Switches

The jog dial and switches are well laid out and intuitively labeled. Panel is back lit making easy to find the button you need in dark conditions.

- A. Home switch
- B. Return switch
- C. Jog dial
- D. Self leveling switch
- E. Working light switch
- F. Beacon light (Opt.) switch
- G. Washer switch (Closed Cab only)
- H. Hydraulic unlock switch
- I. Parking brake switch
- J. AUX port switch
- K. Wiper switch (Closed Cab only)



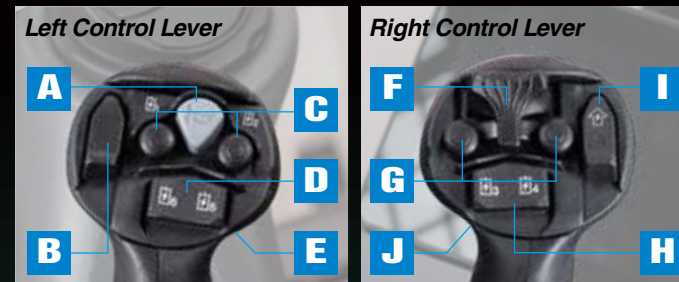
New Deceleration Pedal Feature

Depending on your work, foot throttle now can turn into deceleration pedal with the 1 click of the switches.



Multi-function Levers

The multi-function levers provide fingertip control of all major vehicle and attachment operations, letting you keep both hands on the levers at all times for optimal operating efficiency. Standard on High-flow models, these levers can also be installed as a kit on Standard flow models.



- A. Horn
- B. Kubota Shockless Ride (KSR)
- C. AUX1
- D. AUX3
- E. Travel Speed
- F. Proportional AUX Switch
- G. AUX Hold Switch
- H. AUX2
- I. AUX Mode Change
- J. Float Switch

KUBOTANOW TELEMATICS

Let's monitor and track equipment - All Through myKubota APP.

MONITOR VITAL STATS*

See your equipment's Fuel/DEF levels, accumulated hours, temperatures and more. (*Not all models display vital signs)

MAINTENANCE NOTIFICATIONS

Reminders when maintenance is due and what items need attention.

ADVANCED LOCATION TRACKING WITH GEOFENCES

Always know where your equipment is located. Set up geofencing to plot boundaries that will alert you when the unit leaves an area.

MAINTENANCE SCHEDULE

What maintenance is needed for my machine? And when? Easily find out by looking at the maintenance schedule for your machine. See all of the maintenance items that are needed at each maintenance interval. With KubotaNOW telematics, you can also be notified through myKubota of the upcoming maintenance that is needed, before the interval arrives.

ADDED LAYER OF SECURITY

In the event your equipment is stolen or missing, you can find it through location tracking or remotely prevent it from being started.

DOWNLOAD THE myKUBOTA APP



INTELL-ATTACH™ SYSTEM



INTELL-ATTACH™ SYSTEM

The Intelli-Attach System allows the Kubota SVL97-3 to intelligently recognize a Kubota by Land Pride Attachment when equipped with an Intelli-Attach tag. Once programmed, the communication between the receiver and tag automatically recognizes the capabilities of the attachment and adjusts the power unit to match. Real time feedback between the attachment and SVL97-3 helps the operator maximize performance and speed machine set-up.



The receiver (shown with cover off) automatically adjusts AUX flow. This prohibits high flow when a low flow attachment is connected.

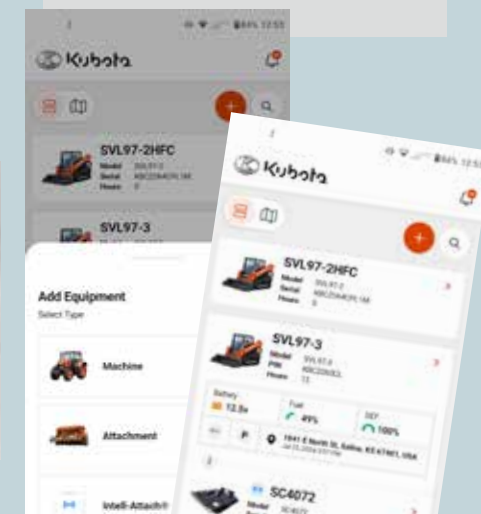
**Receiver sold separately*



Tag is mounted to the attachment and communicates with the receiver wirelessly.

INTELL ATTACH COMPATIBLE

- HB Hopper Broom
- AB Angle Broom
- SC25/40/60/70 Skid Cutter
- SSG25 Stump Grinder
- SR27 Powered Rake
- BR510/560 Breaker
- SRT27 Skid Tiller
- SBL25/30/35 Snow Blower
- CP Cold Planer



Use the myKubota App to program attachment tag based on serial number.

EQUIPMENT

STANDARD EQUIPMENT

- Closed CAB (w/ air conditioning)
- Top / Rear window
- Air ride, Air suspension with heated seat
- 2" Retractable seat belt
- Operator presence control
- Pull down arm rest
- Hand/Dial and Foot throttle
- Decelerator Pedal
- Keyless engine start
- USB port
- Radio with Bluetooth (Closed CAB)
- 12V electric outlet
- Horn
- Lockable fuel cap
- Rear-view Camera
- Backup alarm
- Rear view mirror
- Working Lights (LED)
- KubotaNOW Telematics
- High-flow hydraulics (1/2" and 3/4" couplers for both models)
- Adjustable maximum oil flow
- 14-pin coupler for attachments
- Hydraulic quick coupler
- Loader arm float function
- Bucket self-leveling (up only)
- Wet disc parking brakes
- Two-speed travel
- Rubber crawler 17.7" (450mm)

OPTIONAL EQUIPMENT

- 3" Retractable seat belt
- Polycarbonate door
- Additional counterweight
- Rear bonnet lock Kit
- Strobe light
- Beacon light
- Radiator screen
- Oil Cooler
- ...and much more.