



# TILTROTATOR



**SMARTER WORK.  
MORE ANGLES.**

**INTRODUCING THE  
KUBOTA TILTROTATOR**



# TILTROTATOR

SMARTER WORK. MORE ANGLES.



**TILT AND ROTATION LET YOUR BUCKET GO EXACTLY WHERE YOU WANT IT WITHOUT REPOSITIONING OR RELYING ON A SECOND SET OF HANDS.**

**WITH 360° CONTINUOUS ROTATION AND UP TO 2 X 50° TILT ANGLE, TURN YOUR MACHINE INTO A MULTIFUNCTIONAL ALL-ROUNDER, INCREASING THE FLEXIBILITY AND EFFICIENCY OF ALL YOUR ATTACHMENTS.**



# TILTROTATOR

SMARTER WORK. MORE ANGLES.

## THE KUBOTA TILTROTATOR

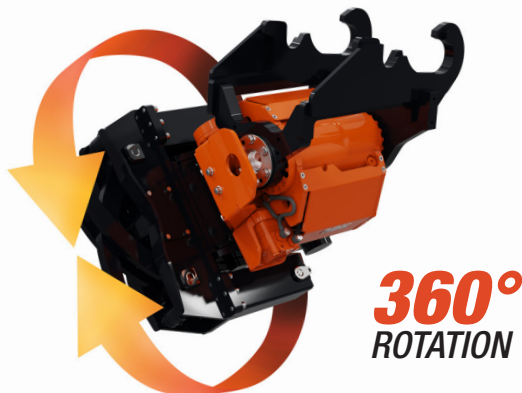
### UNLOCK THE FULL POTENTIAL OF YOUR KUBOTA EXCAVATOR

Boost productivity and versatility with Kubota's integrated tiltrotator solution. Purpose-built for Kubota excavators, this system combines 360° rotation and  $\pm 50^\circ$  tilt for unmatched flexibility in the field.

Get it all done from a single position, increasing your speed and accuracy while lowering manual labour. Its compact, cylinderless design is easy to service, made to last, and designed to integrate seamlessly with your machine.

If you've been looking for the smartest way to do more, this is it. Fewer resources. More control. Do it all from the seat of your machine with the Kubota Tiltrotator.

- Complete more tasks in less time
- Reduce machine repositioning
- Expand your machine's capabilities with a wide selection of attachments



With the Kubota Tiltrotator, you can handle complex tasks without repositioning.

**Applications:** Retaining Wall, Swimming Pool Construction, Septic Tank Installation, Golf Course Construction, Pond Clean Up, Forestry, Hard Scaping, Grading, Demolition, and more.

The Kubota Tiltrotator is engineered to integrate perfectly with select Kubota excavators, ensuring optimal performance and seamless operation. Choose the model that matches your machine.

### COMPATIBLE MODELS AND SPECS

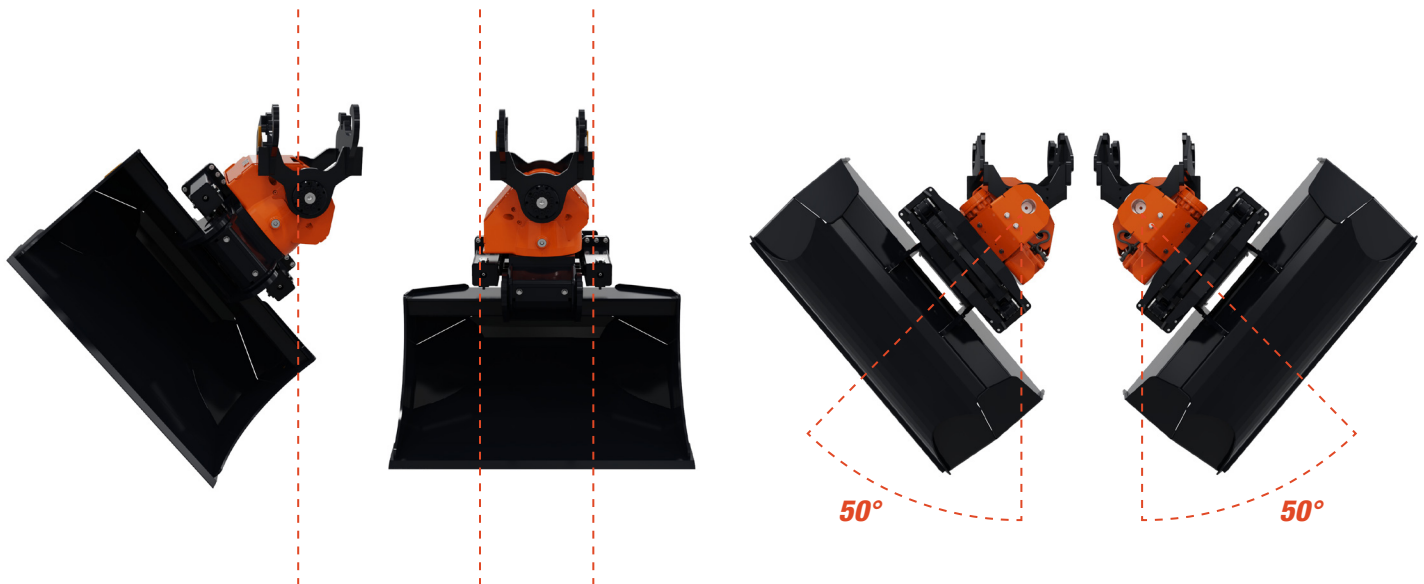
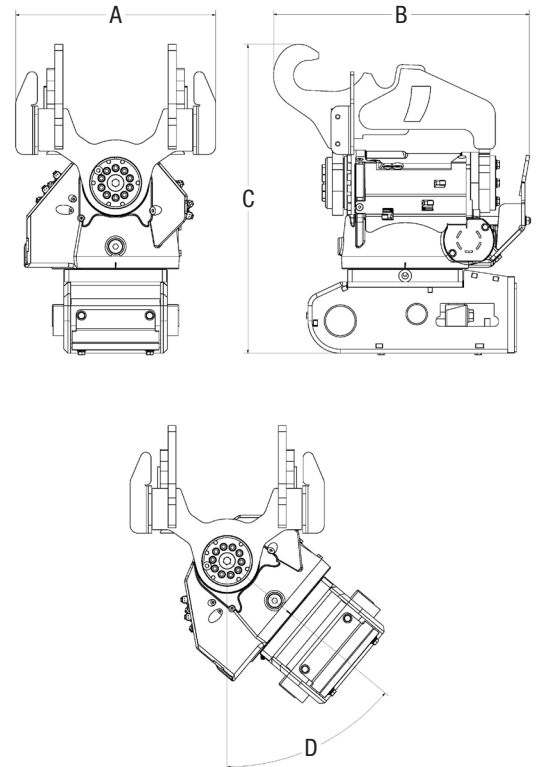
Excavator Models	Tiltrotator	Upper Mounting Coupler - Wedge Coupler		Gripper
		Mechanical Coupler	Hydraulic Coupler	
U48-5, U55-5, KX057-5	K0302TR	X	X	Optional
KX080-5	K0400TR	X	X	Optional

# TILTROTATOR

SMARTER WORK. MORE ANGLES.

Specsheet

		K0302TR	K0400TR
	Machine	U48-5, U55-5, KX057-5	KX080-5
A	Overall width inch (mm) w/o Gripper	19.51 (495.6)	22.45 (570.2)
B	Overall length inch (mm) w/o Gripper	23.74 (602.9)	27.24 (691.9)
C	Overall height inch (mm) w/o Gripper	28.71 (729.2)	30.90 (784.9)
	Weight w/o Gripper lbs (kg)	488 (221.4)	897 (406.9)
	Gripper	Optional	Optional
	Rotational Speed GPM (lpm)	2.24 (8.5)	2.24 (8.5)
	Rotational Torque lbft (Nm)	3466 (4700)	5531 (7500)
	Tilt Torque lbft (kNm)	8113 (11)	11800 (16)
D	Tilt Angle	2*50°	2*50°
	Max. Operating Pressure - PSI (MPa)	3625 (25)	3916 (27)



No pivot point = High constant tilt torque

Maximum 50 degrees tilt angle

# TILTROTATOR

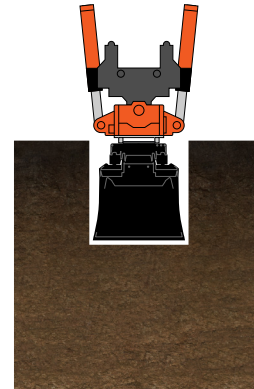
SMARTER WORK. MORE ANGLES.

## FEWER HANDS. MORE CONTROL.

### CYLINDERLESS DESIGN

The cylinder-free, ultra-low-profile drive is designed with a slim width, allowing for greater maneuverability.

- Sleek profile and cylinderless design allow for greater digging depth and precision in tight spaces.
- Uniform, constant tilt torque without loss of performance, regardless of the swivel angle.
- Low-maintenance, oil-immersed rotation gear, minimal grease points.
- Compact and robust design without hydraulic cylinders lowers the risk of damage.
- Tilting angle of up to  $\pm 50^\circ$ .



COMPETITION

Cylinderless design allows deeper digging



KUBOTA

### QUALITY ENGINEERING

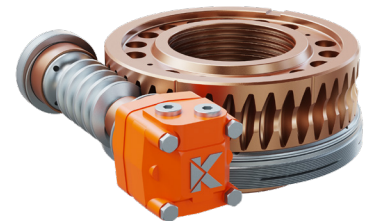
#### HOUSING

- High grade steel materials
- Hydraulics completely integrated
- Wear-resistant surface



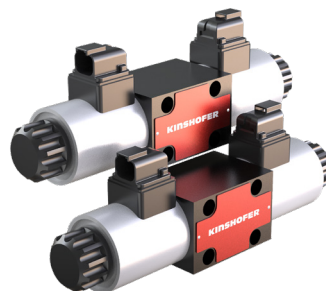
#### ROTATION UNIT

- Robust Oversize Worm Gear Design
- Easier maintenance
- Lubrication with gear oil



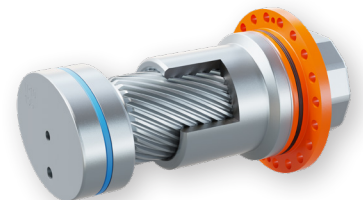
#### INDUSTRIAL VALVES

- All functions proportional
- High tolerance against dirt



#### HOLDING TORQUE

- Pilot check valve ensures a high holding torque
- Equipped with counter-balance valves, providing firm load holding in the desired position
- Consistent torque



# TILTROTATOR

SMARTER WORK. MORE ANGLES.

## COUPLER AND GRIPPER USABILITY



### Kubota Premium Wedge Coupler

Available in mechanical and hydraulic coupler options. Allow easy removal of the tiltrotator when not in use. Quick switching to standard attachments without hassle.



### Tiltrotator Unit



### Lower Mounting Hydraulic Coupler

Easily switch buckets and attachments without leaving the cab.



### Optional Gripper

Hydraulic gripper adds versatility by enabling basic material handling tasks directly with the tiltrotator - it's like having two tools in one.

## CONTROL SYSTEM

### Touchscreen

- CAN Bus System adjustments on the touch screen
- Multiple attachment profiles
- 7" Colour display



### Joysticks

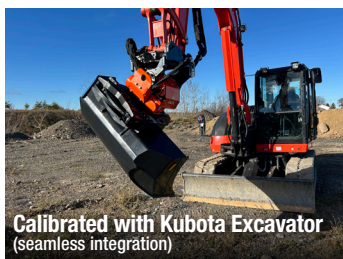
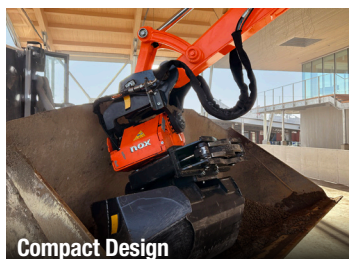
New ergonomic design replaces standard controls that put precision and comfort at your fingertips



# TILTROTATOR

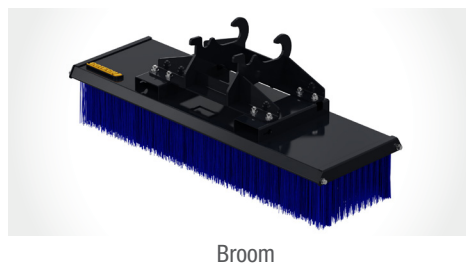
SMARTER WORK. MORE ANGLES.

## KUBOTA ADVANTAGES



## ATTACHMENTS

The Kubota Tiltrotator is designed to handle a wide range of attachments, making it a true multi-tool for any jobsite. Whether you're grading large surfaces, digging at challenging angles, sweeping debris, or handling materials, the tiltrotator provides seamless control and precision. Compatible with buckets, grading beams, grapples, pallet forks, asphalt cutters, and more, it allows operators to switch between tasks effortlessly, boosting productivity and reducing downtime. From fine finish work to heavy-duty applications, the right attachment is always just a quick change away.







---

# SMARTER WORK. MORE ANGLES.

---



**KUBOTA.CA**

Kubota Canada Ltd. reserves the right to change the stated specifications without notice. The comparison is for descriptive purposes only and does not provide any express or implied warranty of any nature, including any warranty of merchantability or for a particular purpose. For complete operational information, the operator's manual should be consulted. KCL supplies products and services to Canadian residents only. For information regarding Kubota products or services outside Canada, see Kubota Corporation's global web site.

PART: CE-TILTROTATORENG