



FLEXIBLE - Light, Medium and Heavy Duty

208, 240, 277 & 480 Volts - 105, 108 & 112 models with 2 or 4 elements

COMMERCIAL ELECTRIC

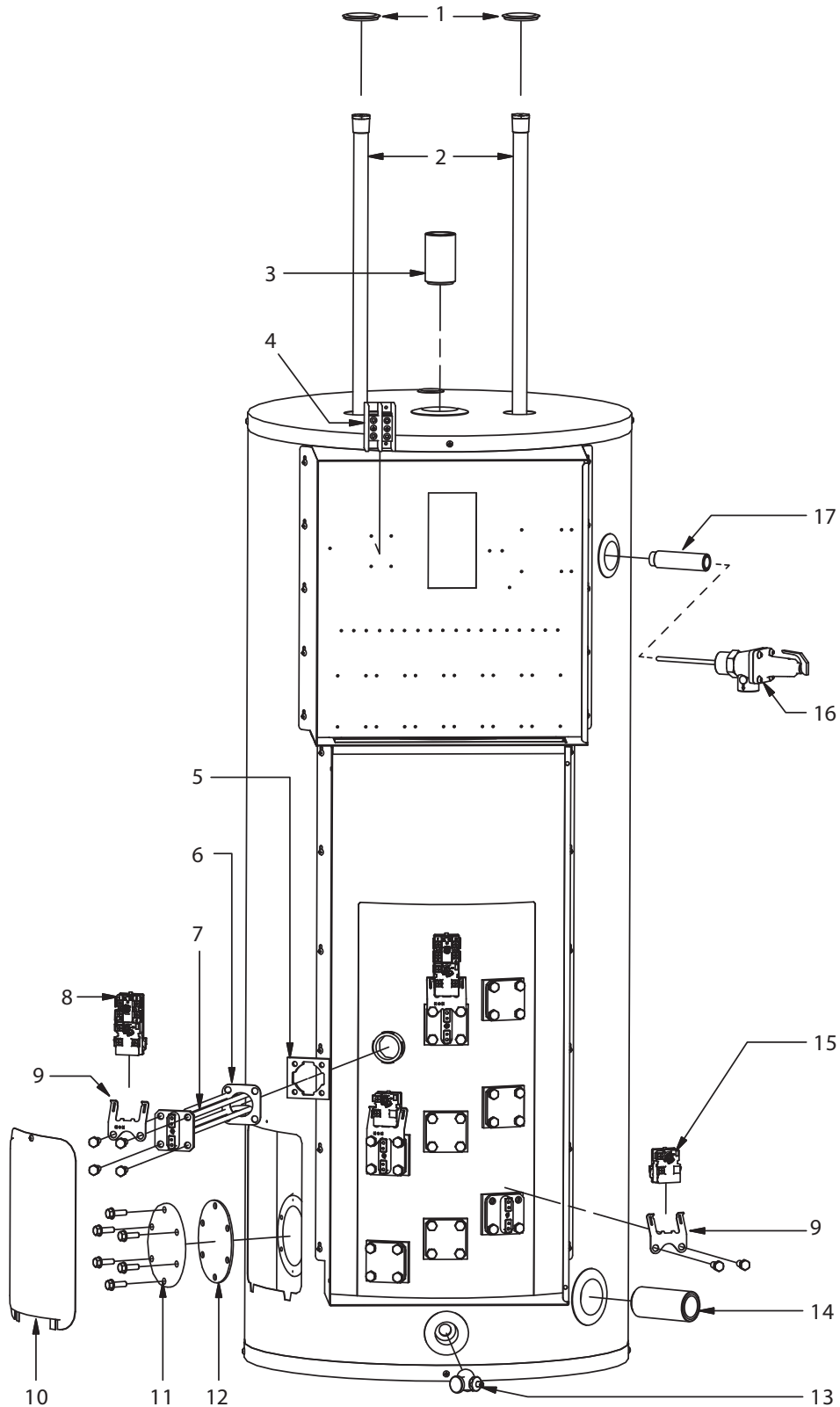
Giant

I.D.	PART #	DESCRIPTION	USE WITH MODELS
1	87000012-A	Snap-in plug	All
2	MS155410 MS155520 MS166530	Magnesium anodes (2)	105 108 112
3	16001402-A	Di-electric nipple 1 1/2" X 4"	All
4	TB587001	Terminal block end	Single phase
5	99001204-A	Twist-lock flange	All
6	18G0002	Square flange element gasket	All
7	SEE ELEMENT TABLE BELOW		
8	56000016-A	Combination thermostat / high limit	All
9	18G0001	Thermostat bracket	All
10	99000061-A	Jacket door	All
11	25004111-A	Clean-out cover	All
12	GA1N1110	Clean-out gasket	All
13	DV3Z0070	Brass drain valve	All
14	16001402-A	Di-electric nipple 1 1/2" X 4"	All
15	56000018-A	Lower thermostat	All
16	17000014-A	Temperature and pressure relief valve	All
17	16000015-A	Di-electric nipple 3/4" X 3 1/2"	All

SQUARE FLANGE ELEMENTS

Part #	Watts	Volts
9AG30/80	3 000 W	208V
9AG45/80	4 500 W	
9AG50/90	5 000 W	
10G30/80	3 000 W	240V
10G45/80	4 500 W	
10G50/90	5 000 W	
10G60/100	6 000 W	
11G30/80	3 000 W	277V
11G45/80	4 500 W	
11G50/90	5 000 W	
11G60/100	6 000 W	
13G30/80	3 000 W	480V
13G45/80	4 500 W	
13G50/90	5 000 W	
13G60/100	6 000 W	

Illustration shows 108 model with 4 elements.



COMMERCIAL ELECTRIC

Giant