



Residential Electric Water Heaters

Featuring a variety of models designed for installations in cottages, offices, mobile homes or other applications where space is limited, the SpaceSaver® line of residential electric water heaters provides optimum reliability, performance and energy efficiency.

DESIGNED FOR PERFORMANCE

- Exclusive TankSaver® design
- Glass-lined tanks for longer life
- Meets latest energy efficiency standards
- Factory-installed plastic-lined nipples
- Styropour™ base for added energy efficiency
- Thermostatically controlled long life elements
- CFC-free foam insulation
- Personnel protector covers elements and controls

EASY TO INSTALL AND REPAIR

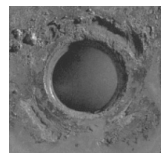
- Conveniently located T&P and drain valve
- Removable anodes

WARRANTY

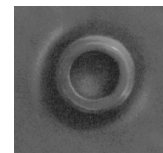
- 6 year limited tank warranty
- 1 year limited parts warranty

EXCLUSIVE DESIGN

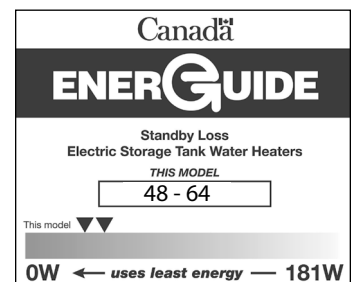
- The exclusive TankSaver design aids the glass lining process to ensure optimum coverage, and guards tank openings for watertight connections



Without TankSaver®



With TankSaver®



For Technical Information call 888-599-2837. A. O. Smith Enterprises Ltd. reserves the right to make product changes or improvements without prior notice.



Residential Electric Water Heaters

SPECIFICATIONS												
Model	Series	Capacity			Input		Standby Loss WATTS	Height A IN (CM)	Diameter B IN (CM)	Width C IN (CM)	Shipping Weight LB (KG)	BC/ON/QC Compliant
		IG	USG	L	WATTS	VOLTS						
TOP ENTRY SINGLE ELEMENT MODELS												
SS025SE15	100	2	2.5	9	1440	120*	N/A	14 ½ (37)	10 ¾ (26)**	11 ¾ (30)	17 (8)	✓
SS04SE15	100	3	4	15	1440	120*	N/A	19 ¼ (49)	10 ¾ (26)**	11 ¾ (30)	20 (9)	✓
SS06SE15	100	5	6	23	1440	120*	N/A	18 (46)	15 ½ (39)***	11 ¾ (30)	24 (11)	✓
BOTTOM ENTRY SINGLE ELEMENT MODELS												
SS06SEB15	N/A	5	6	23	1500	120	N/A	15 ¼ (39)	14 ¼ (36)	N/A	35 (16)	✓
SS06SEB30	N/A	5	6	23	3000+	240	N/A	15 ¼ (39)	14 ¼ (36)	N/A	35 (16)	✓
SS12SEB15	N/A	10	12	45	1500	120	N/A	22 ¾ (58)	16 (41)	N/A	55 (25)	✓
SS12SEB30	N/A	10	12	45	3000+	240	N/A	22 ¾ (58)	16 (41)	N/A	55 (25)	✓
SS620SSEB-15K	100	14	17	65	1500	120	51	25 ½ (65)	20 (51)	N/A	65 (30)	✓
SS620SSEB-30	100	14	17	65	3000+	240	51	25 ½ (65)	20 (51)	N/A	65 (30)	✓
SS630SSEBN-15K	100	22	27	102	1500	120	48	30 (76)	22 (56)	N/A	101 (46)	✓
SS630SSEBN-30	100	22	27	102	3000+	240	48	30 (76)	22 (56)	N/A	101 (46)	✓
TOP ENTRY DOUBLE ELEMENT MODELS												
SS640SDE3-15K	100	32	38	144	1500	120	54	50 (127)	20 (51)	N/A	103 (47)	✓
SS640SDE3-30X	100	32	38	144	3000	208	54	50 (127)	20 (51)	N/A	103 (47)	✓
SS640SDE3-30	100	32	38	144	3000+	240	54	50 (127)	20 (51)	N/A	103 (47)	✓
SS650SDE-30	100	40	50	182	3000+	240	53	48 ¾ (124)	22 (56)	N/A	125 (57)	✓
SS680TDE-45	100	60	80	287	4500++	240	78	60 ½ (154)	24 (61)	N/A	170 (77)	✓
LOWBOY TOP ENTRY DOUBLE ELEMENT MODELS												
SS630LDE-45X	250	22	27	102	4500	208	53	31 (79)	22 (56)	N/A	96 (44)	ON/QC only
SS630LDE-45	250	22	27	102	4500++	240	53	31 (79)	22 (56)	N/A	96 (44)	ON/QC only
SS640LDE-45X	250	30	36	137	4500	208	62	33 ½ (85)	24 (61)	N/A	113 (51)	ON/QC only
SS640LDE-45	250	30	36	137	4500++	240	62	33 ½ (85)	24 (61)	N/A	113 (51)	ON/QC only
SS650LDEN-45	280	40	48	181	4500	240	64	37 ¾ (96)	26 ½ (67)	N/A	170 (77)	-

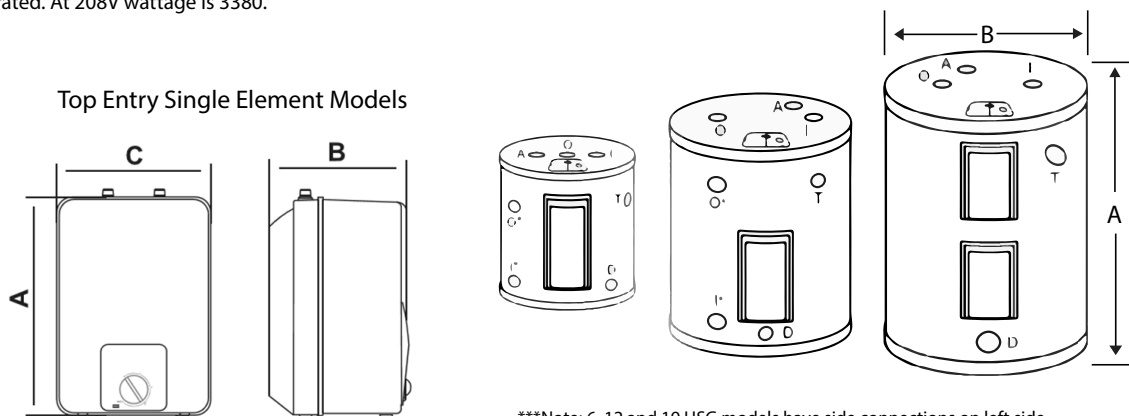
*Plug-in model.

**Depth. Width is 11 ¾ (30).

***Depth. Width is 15 ¾ (40).

+Model is dual-rated. At 208V wattage is 2253.

++Model is dual-rated. At 208V wattage is 3380.



***Note: 6, 12 and 19 USG models have side connections on left side.

For Technical Information call 888-599-2837. A. O. Smith Enterprises Ltd. reserves the right to make product changes or improvements without prior notice.