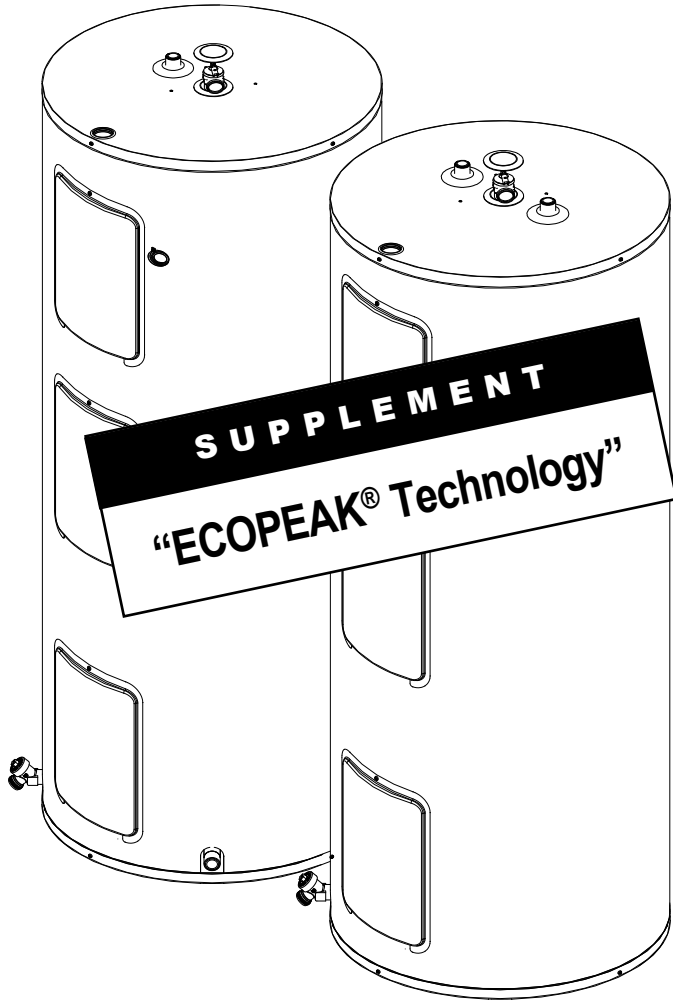


RESIDENTIAL ELECTRIC WATER HEATERS OWNER'S MANUAL SUPPLEMENT "ECOPEAK® TECHNOLOGY"



DANGER

If the information in these instructions is not followed exactly, a fire or explosion may result causing property damage, personal injury, or death.

- **DO NOT REMOVE** the element and thermostat access panel before the power to the water heater is turned "OFF".
- **DO NOT ATTEMPT** to repair or replace any of the electrical components installed on the water heater before the power to the water heater is turned "OFF".
- **DO NOT USE** the water heater on a voltage other than that specified on the water heater rating plate.
- **DO NOT CONNECT** the power supply wiring to anywhere other than the main power connection on the water heater.
- **DO NOT TURN ON** the power to the water heater unless it is completely filled with water.
- **DO NOT DRAIN** the water heater unless the power to the water heater has been turned "OFF".
- **DO NOT STORE** or use gasoline or other flammable vapours and liquids in the vicinity of this or any other appliance.

WHAT TO DO IF YOU SMELL SMOKE

- Immediately turn "OFF" the power to the water heater.
- If after turning "OFF" the power the smoke continues, call your local fire department.
- When the smoke has stopped, call a qualified service technician to identify and repair the problem.

IMPORTANT

READ THESE INSTRUCTIONS CAREFULLY BEFORE BEGINNING THE INSTALLATION. PROPER INSTALLATION WILL PROVIDE SAFE AND EFFICIENT SERVICE, AND AVOID NEEDLESS EXPENSE NOT COVERED BY THE WARRANTY. READ THE PRODUCT WARRANTY CONTAINED IN THE OWNER'S MANUAL AND REMEMBER TO FILL OUT AND RETURN TO THE MANUFACTURER ALL RELEVANT WARRANTY CARDS AND CERTIFICATES. SHOULD YOU HAVE ANY QUESTIONS, PLEASE CONTACT YOUR LOCAL DEALER OR REFER TO THE **GETTING SERVICE FOR YOUR WATER HEATER** SECTION OF THE OWNER'S MANUAL. **SAVE THIS MANUAL FOR FUTURE REFERENCES.**

For your records, write the model and serial number here:

Model # _____

Serial # _____



Electrical Connections

⚠ WARNING

This water heater uses an external electrical source for power. It must be electrically grounded in accordance with all local codes or, in the absence of local codes, CSA C22.1 Canadian Electrical Code, in Canada, and/or the National Electrical Code, ANSI/NFPA 70, in the United States. Failure to properly ground this water heater can result in property damage, personal injury, or death.

This water heater must be connected on a separate fuse branch circuit. Check the water heater rating plate for the element wattage and voltage and make sure that the power supply wiring and the fusing or circuit breaker are the correct size for this water heater (**see Table**). Verify that all of the wire connections on the element and thermostat are secure, and that none of the wires are grounded, have split, or are broken (**see diagram**). If any of the original wiring needs replacing, use only 14AWG-type, or greater wire that is approved for 221°F (105°C).

To hook up the water heater to the power supply, connect the power supply wiring to the red and black wires attached to the top thermostat. **NEVER CONNECT THE POWER SUPPLY DIRECTLY ONTO THE THERMOSTAT.**

⚠ WARNING

The middle and lower elements may be "ON" simultaneously. In the event of failure, replace them with elements of the same **WATTAGE AND VOLTAGE** as specified on the rating plate of the water heater;

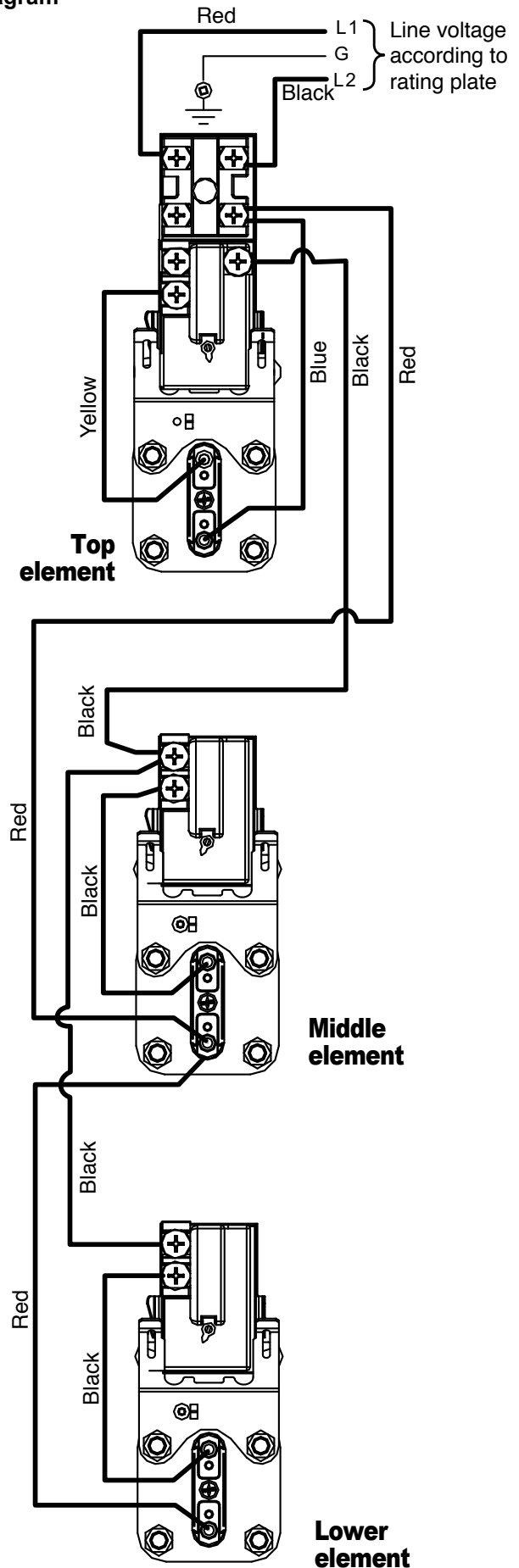
- 3,000 Watts for the middle element
- 800 Watts for the lower element

Table

Recommended wire and breaker				
Element Wattage	Recommended Wire Size*		Recommended Breaker Size	
	208 V	240 V	208 V	240 V
3,800 W	#10	#12	30A	20A
4,500 W	#10	#10	30A	30A

*Should conform to Local Codes.
The water heater must be grounded.

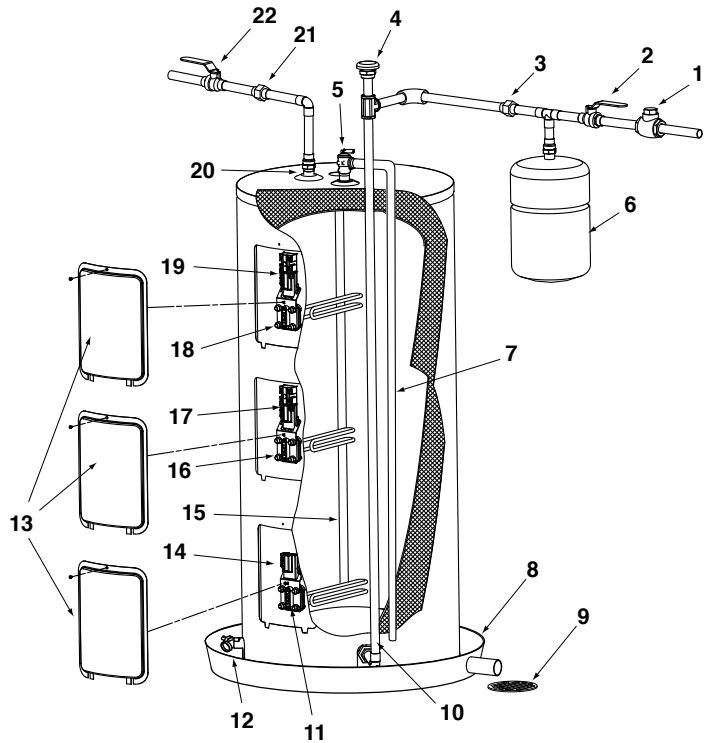
Diagram



Bottom entry models

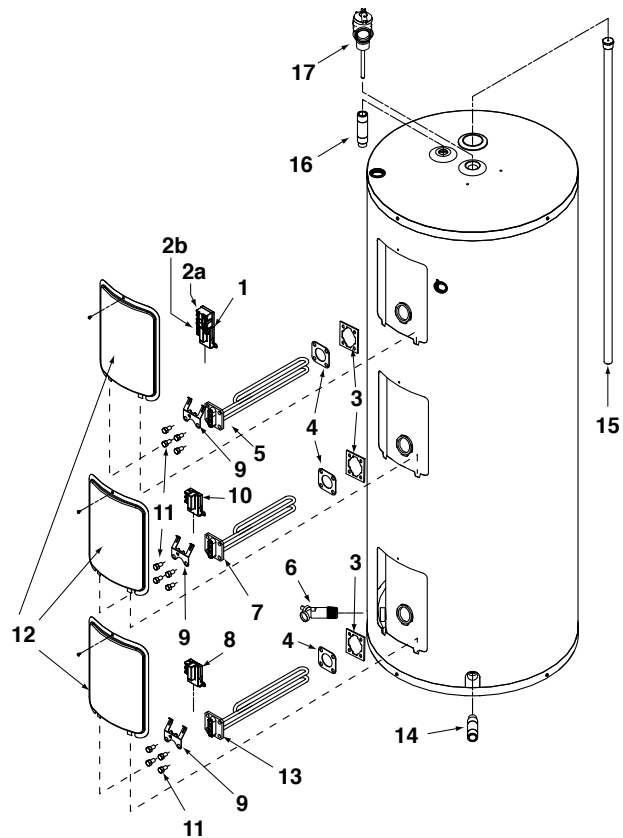
Installation

ID No.	Description
1	Check valve, water meter or pressure reducing valve
2	Cold water manual shut-off valve
3	Union
4	Vacuum breaker
5	Temperature & pressure-relief valve
6	Expansion tank
7	Overflow tube
8	Drain pan
9	Free-flowing floor drain
10	Cold water inlet
11	Lower element
12	Drain valve
13	Element and thermostat access doors
14	Lower thermostat
15	Magnesium anode
16	Middle element
17	Middle thermostat
18	Upper element
19	Thermostat / high limit assembly
20	Hot water outlet
21	Union
22	Hot water manual shut-off valve



Replacement parts

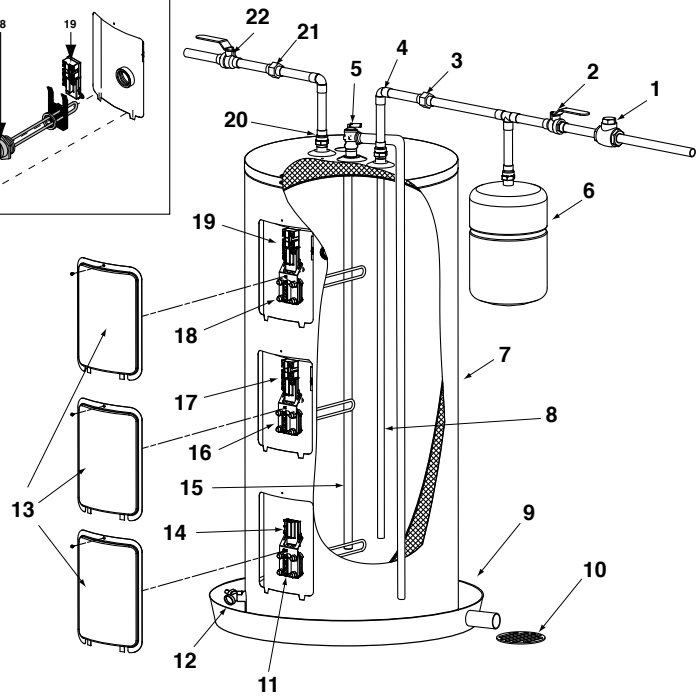
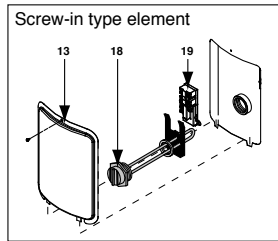
ID No.	Description
1	Thermostat / High limit assembly
2a	High limit with manual reset
2b	Thermostat
3	TWIST-LOCK Flanges
4	Element gaskets
5	Upper element
6	Drain valve
7	Middle element
8	Lower Thermostat
9	Thermostat brackets
10	Middle Thermostat
11	Machine bolts
12	Element and thermostat access doors
13	Lower element
14	Inlet nipple
15	Magnesium anode
16	Outlet nipple
17	Temperature & pressure-relief valve



Top entry models

Installation

ID No.	Description
1	Check valve, water meter or pressure reducing valve
2	Cold water manual shut-off valve
3	Union
4	Cold water inlet
5	Temperature & pressure-relief valve
6	Expansion tank
7	Overflow tube
8	Dip-tube
9	Drain pan
10	Free-flowing floor drain
11	Lower element
12	Drain valve
13	Element and thermostat access doors
14	Lower thermostat
15	Magnesium anode
16	Middle element
17	Middle thermostat
18	Upper element
19	Thermostat / high limit assembly
20	Hot water outlet
21	Union
22	Hot water manual shut-off valve



Replacement Parts

ID No.	Description
1	Thermostat / High limit assembly
2a	High limit with manual reset
2b	Thermostat
3	TWIST-LOCK Flanges
4	Element gaskets
5	Upper element
6	Drain valve
7	Middle element
8	Lower Thermostat
9	Thermostat brackets
10	Middle Thermostat
11	Machine bolts
12	Element and thermostat access doors
13	Lower element
14	Dip tube
15	Magnesium anode
16	Outlet nipple
17	Temperature & pressure-relief valve

