



FLEXIBLE - Light, Medium and Heavy Duty

208, 240, 277 & 480 Volts - 105 & 108 models with 3, 6 or 9 elements

| I.D. | PART # | DESCRIPTION | USE WITH MODELS |
|------|--|---------------------------------------|--|
| 1 | 87000012-A | Snap-in plug | All |
| 2 | MS155410 MS155520 | Magnesium anodes (2) | 105 108 |
| 3 | 16001402-A | Di-electric nipple 1 1/2" X 4" | All |
| 4 | 32000008-A 32000007-A 32000009-A | Terminal block THREE (3) phases | 3 elements 6 elements 9 elements |
| 5 | 34001005-A | Fuse Holder (2P) | All |
| 6 | 34000003-A | Fuses (3 amps Class G) | All |
| 7 | 34001004-A | Fuse Holders (3P) | *US models (-US) |
| 8 | 34000004-A | Fuses (30 amps Class G) | *US models |
| 9 | 43000008-A | Contactors HCC-3XT02CY | All |
| 10 | 99001204-A | Twist-lock flange with screws | All |
| 11 | 18G0002 | Square flange element gasket | All |
| 12 | SEE ELEMENT TABLE BELOW | | |
| 13 | 56000016-A | Combination thermostat / high limit | All except 1053 & 1083 |
| | 56000022-A | High limit | 1053 & 1083 |
| 14 | GA1N1110 | Clean-out gasket | All |
| 15 | 25004111-A | Clean-out cover | All |
| 16 | 99000061-A | Jacket door | All |
| 17 | 18G0001 | Thermostat bracket | All |
| 18 | DV3Z0070 | Brass drain valve | All |
| 19 | 56000018-A | Lower thermostat | 1053 & 1083 |
| 20 | 16001402-A | Di-electric nipple 1 1/2" X 4" | All |
| 21 | 17000014-A | Temperature and pressure relief valve | All |
| 22 | 16000015-A | Di-electric nipple 3/4" X 3 1/2" | All |
| 23 | 44000004-A | Transformer Multi-tap /120V | All |

* Optional for Canadian Models

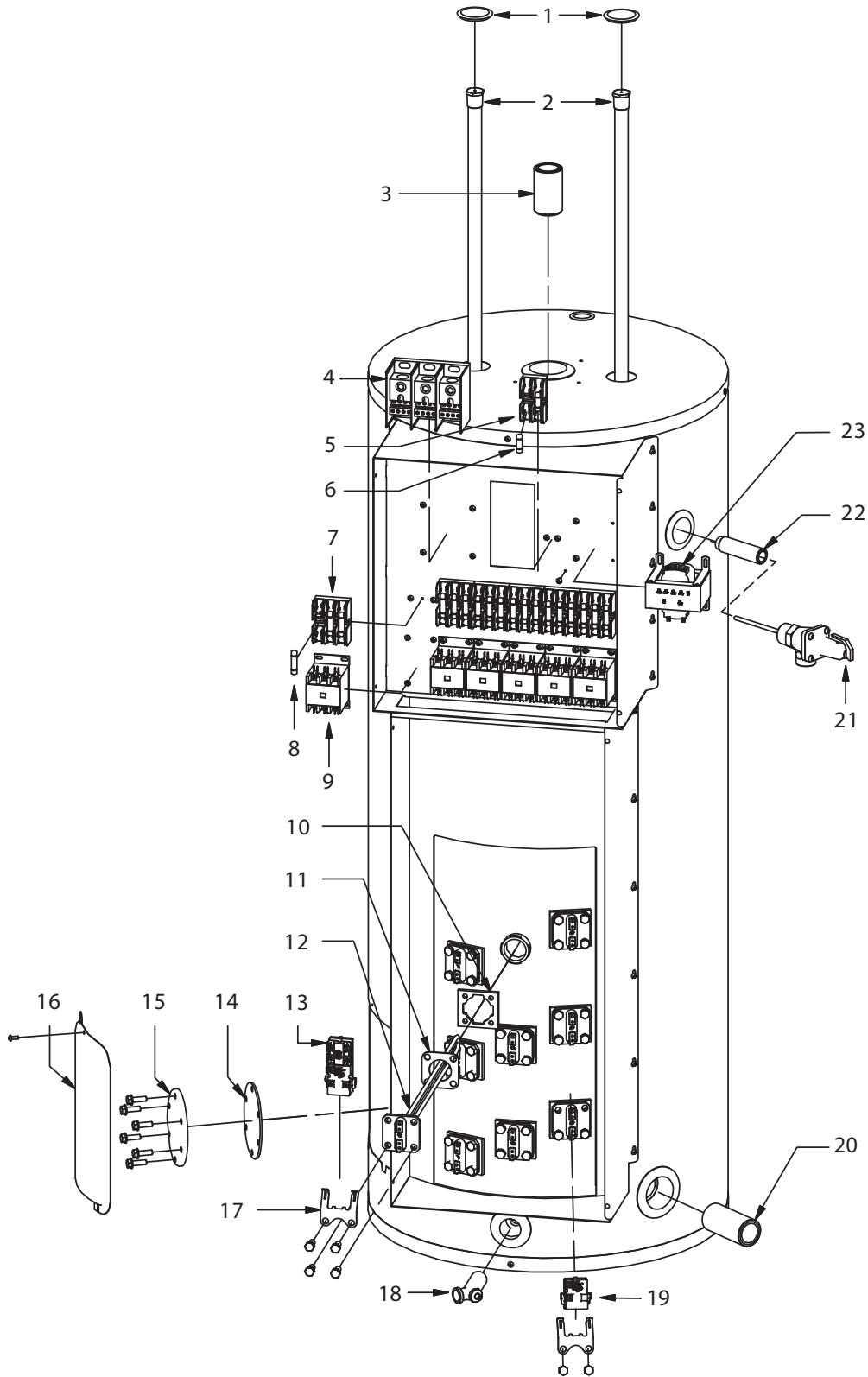
SQUARE FLANGE ELEMENTS

| Part # | Watts | Volts |
|-----------|---------|-------|
| 9AG20/80 | 2 000 W | 208V |
| 9AG30/80 | 3 000 W | |
| 9AG40/80 | 4 000 W | |
| 9AG45/80 | 4 500 W | |
| 9AG50/90 | 5 000 W | |
| 10G20/80 | 2 000 W | 240V |
| 10G30/80 | 3 000 W | |
| 10G40/80 | 4 000 W | |
| 10G45/80 | 4 500 W | |
| 10G50/90 | 5 000 W | |
| 10G60/100 | 6 000 W | |
| 11G20/80 | 2 000 W | 277V |
| 11G30/80 | 3 000 W | |
| 11G40/80 | 4 000 W | |
| 11G45/80 | 4 500 W | |
| 11G50/90 | 5 000 W | |
| 11G60/100 | 6 000 W | |
| 13G20/80 | 2 000 W | 480V |
| 13G30/80 | 3 000 W | |
| 13G40/80 | 4 000 W | |
| 13G45/80 | 4 500 W | |
| 13G50/90 | 5 000 W | |
| 13G60/100 | 6 000 W | |

January 2025

© 2025 A. O. Smith Enterprises Ltd. All rights reserved. Specifications are subject to change without notice.
Giant | www.giantinc.com | 1-800-363-9354 | 11021 Notre-Dame St. East | Montreal-East, QC H1B 5H3

Illustration shows 108 model with 9 elements.



COMMERCIAL ELECTRIC

Giant