

Training System Workbook



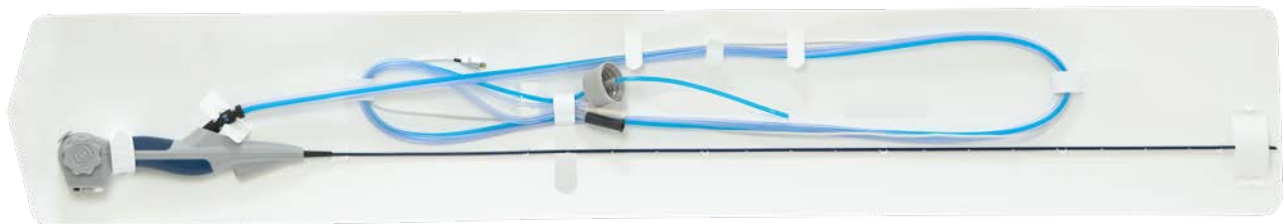
Table of Contents

- 2 Training System Contents Checklist
- 3 Needed Materials Not Supplied by EvoEndo®
- 4 Assembled EvoEndo® Head Model
- 5 EvoEndo® Model LE Training Gastroscope Quick Start Guide
- 6 Anatomy Guide
- 9 Training Techniques

Contents Checklist

EVOENDO® TRAINING SYSTEM

- ☐ EvoEndo® Demo Scope
- ☐ EvoEndo® Demo Controller
- ☐ EvoEndo® Head Model
- ☐ Power Supply
- ☐ HDMI to HDMI Cable
- ☐ Model Lubricant
- ☐ Microfiber Cloth
- ☐ HDMI to DVI Cable



Needed Materials

NOT SUPPLIED BY EVOENDO®

- A secure stand/table/medical chair with a way to secure and position the model at eye level
- Power supply/power strip
- Medical grade monitor (1000 nit or greater) with HDMI or DVI Input
(A non-medical monitor rated at 1000 nit or greater can also be used but image quality and illumination may be diminished)

OPTIONAL

- Nasal atomizer system
- Gastrointestinal biopsy forceps for 2 mm accessory channel
- 250-1,000 mL sterile water bottle with 1.25 inch cap
- Suction supply at 200 mm/Hg
- Pressurized air supply at 5 psi or 1.5 lpm flow at 50 psi (wall pressure)
- Compatible endoscopy reporting system/picture capture software
- Towel or chux pad

Assembled EvoEndo® Head Model

The Training Head Model replicates the anatomy of the nose and pharynx and enables practicing TNE with the EvoEndo® Model LE Single-Use Gastroscope.



EvoEndo® Model LE Single-Use Gastroscope

Quick Start Guide

Unpack and Inspect

- ☐ Device packaging not damaged?
- ☐ Device free from defects and not damaged during unpacking?
- ☐ Controller cleaned from previous use?

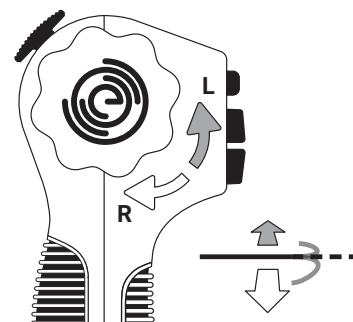
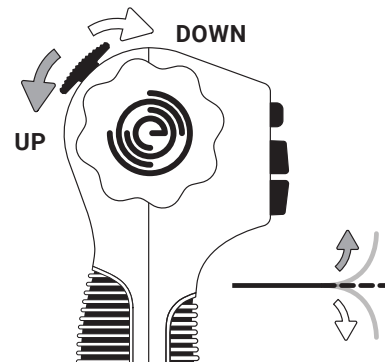
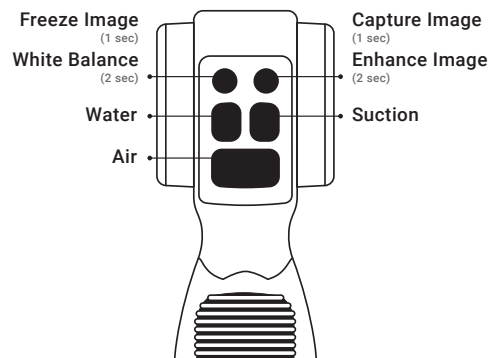
Connect and Test

- ☐ Can make appropriate electrical connections?
- ☐ Image quality sufficient?
- ☐ Can make appropriate tube/supply connections?
- ☐ Successfully ID buttons air/water/suction?
- ☐ Air/water/suction functioning correctly?
- ☐ Successfully ID buttons freeze image, white-balance, capture image, enhance image?
- ☐ Visually checked vertical tip control (thumb lever)?
- ☐ Visually checked horizontal tip control (rotary dial)?
- ☐ Endoscopic accessories fit the working channel?

Perform endoscopic procedure on anatomical head model.
(Training kit and demo scopes are NOT for human use).

Withdraw, Dispose and Clean

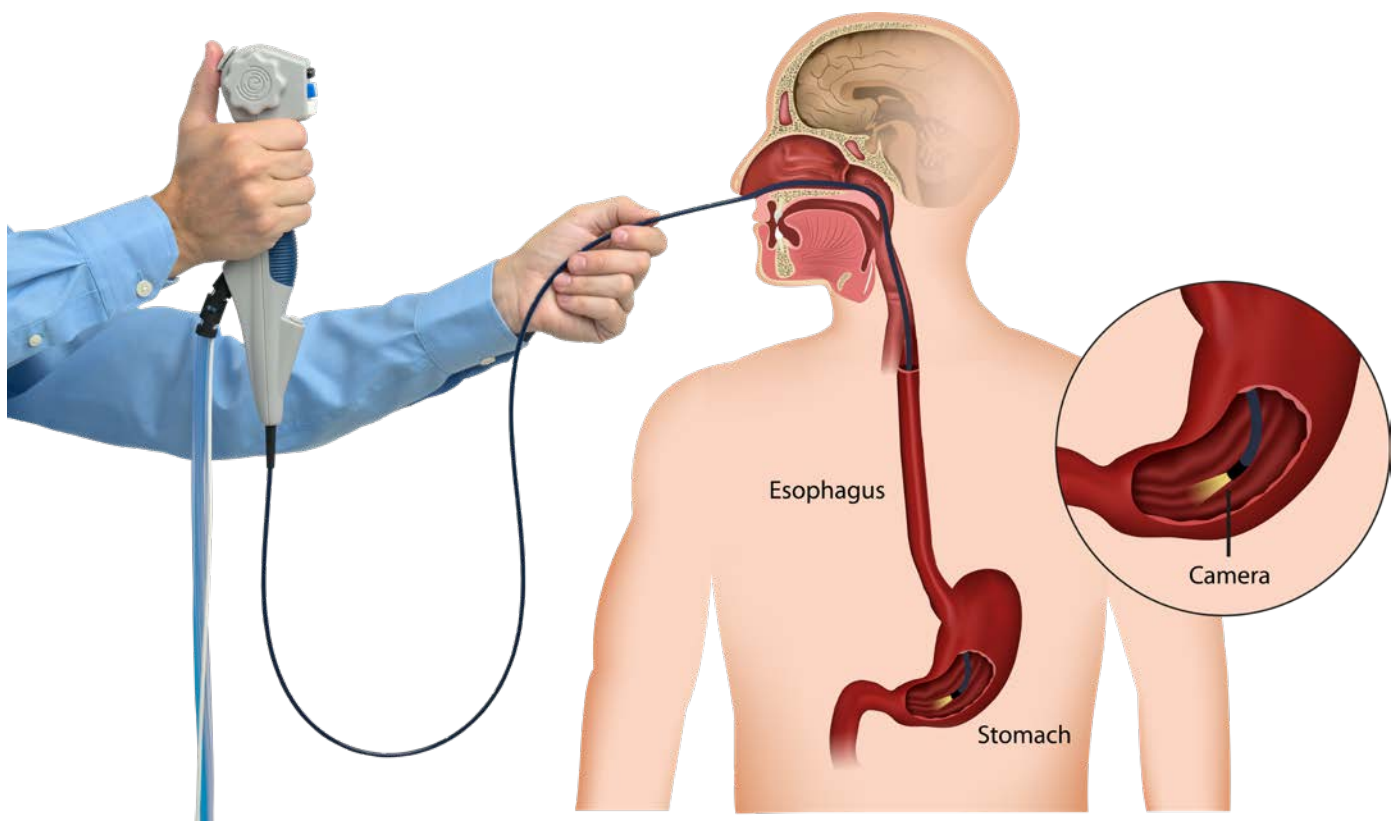
- ☐ Remove any endoscopic accessories
- ☐ Discard Scope
- ☐ Recycle plastic packaging tray
- ☐ Clean and disinfect Controller



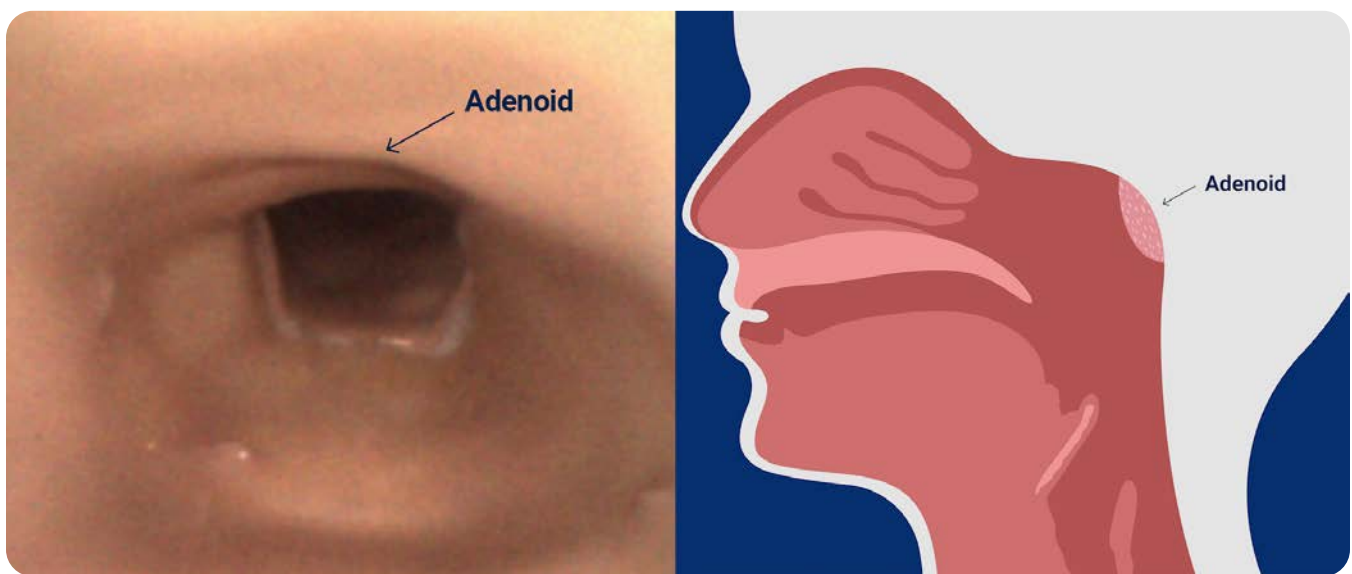
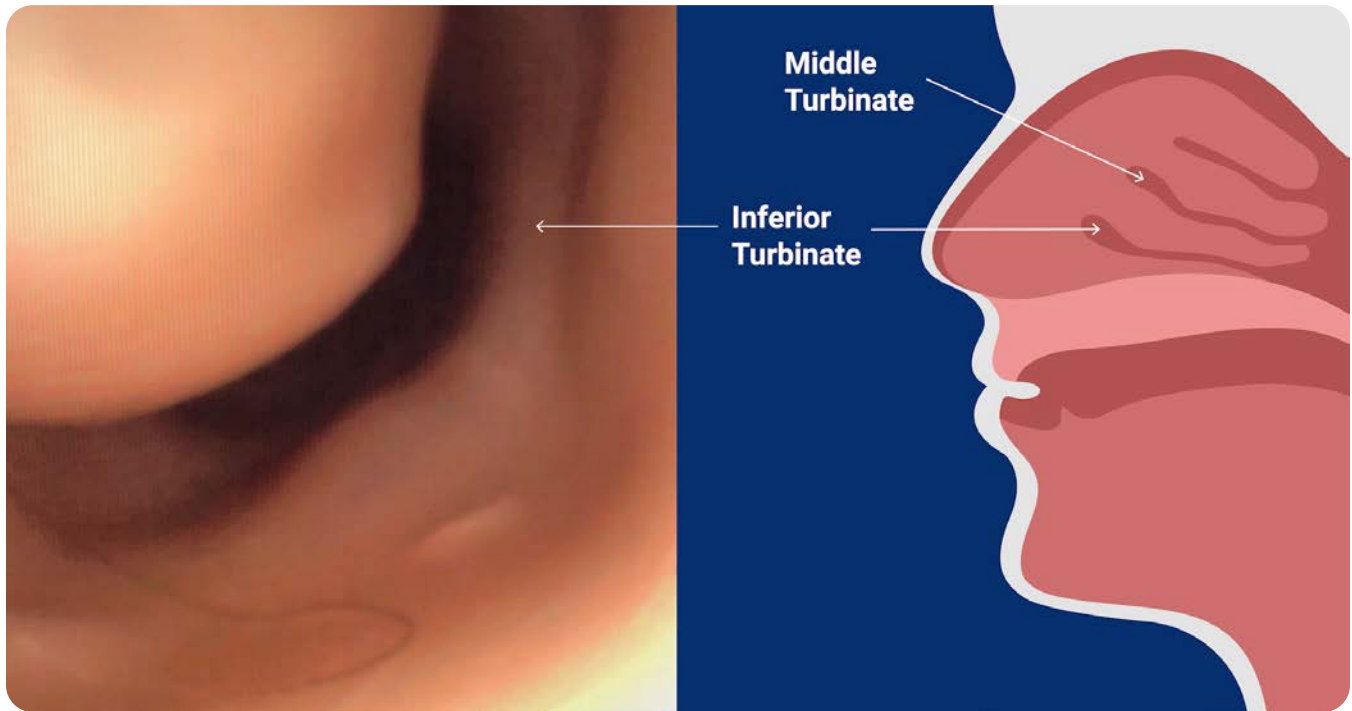
Anatomy Guide

To a gastrointestinal endoscopist the path of an unsedated transnasal endoscope will be different from what you are used to. We recommend reviewing the anatomy description below to understand the new nasal anatomy you will be traversing when performing unsedated TNE. Imagining this pathway will assist you in training and performing TNE.

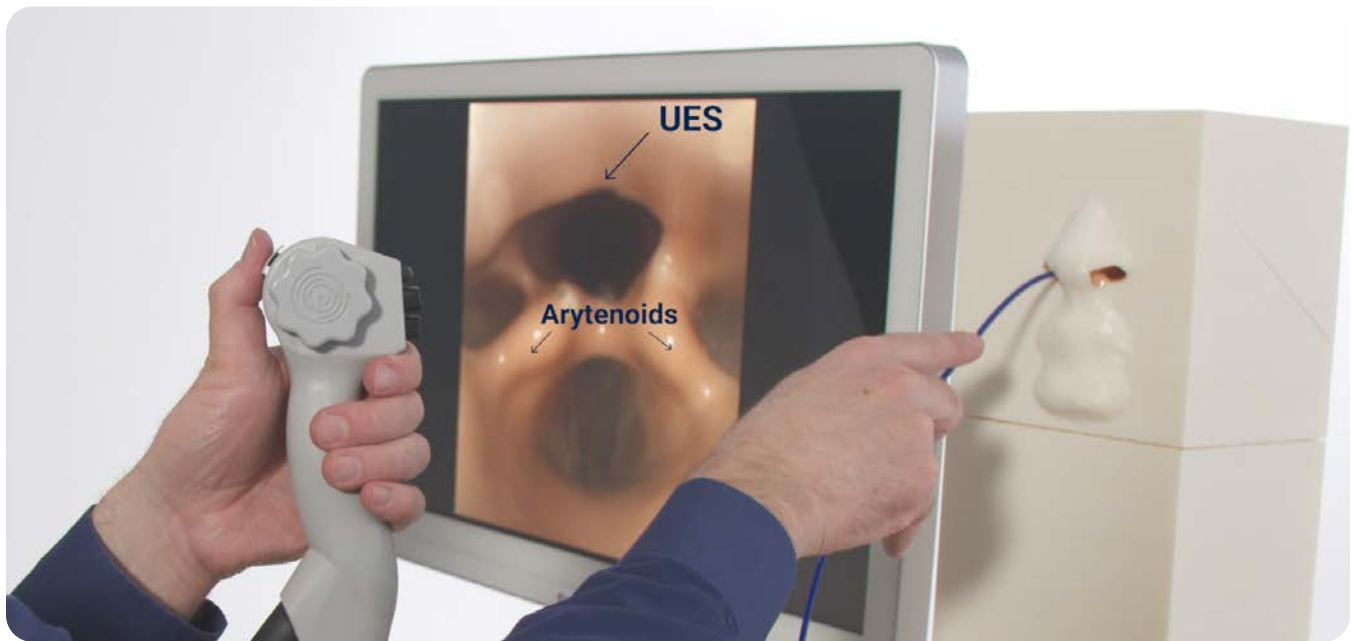
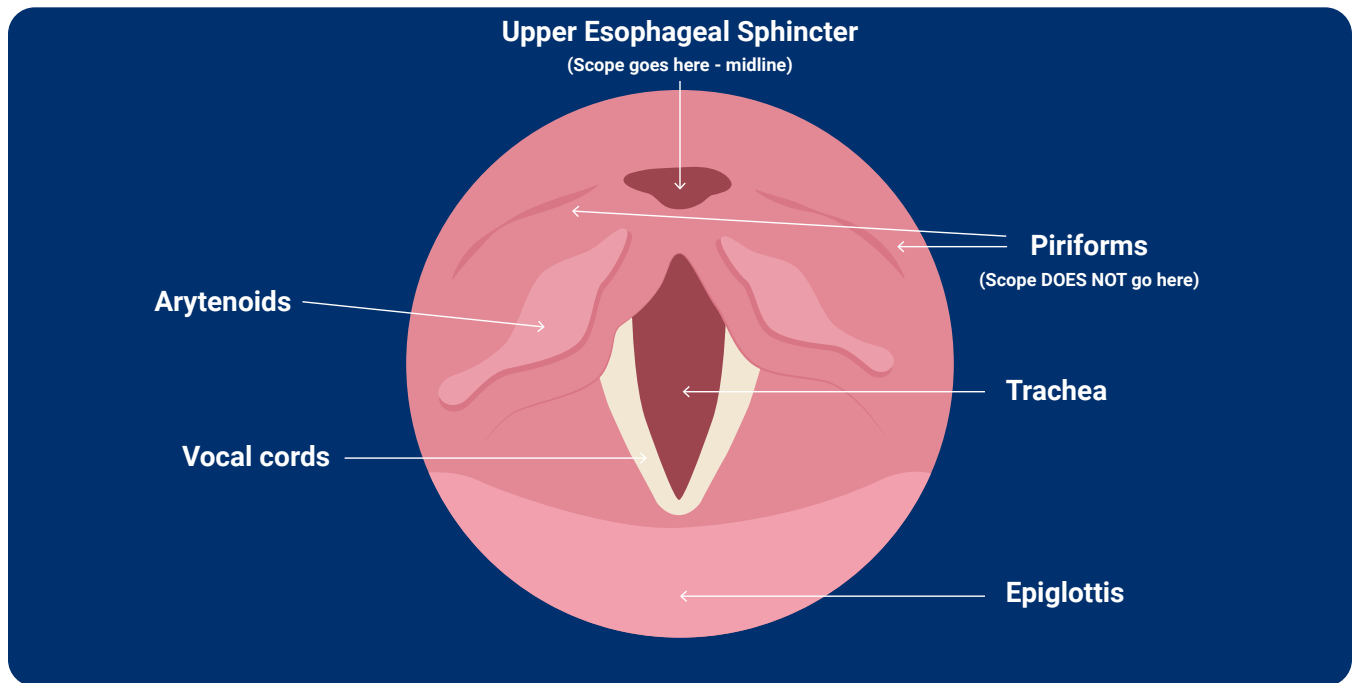
The Path of a Transnasal Endoscope



Anatomy of the Nose and Pharynx in the Training Model



The Posterior Pharynx as it appears in a TNE



Training Techniques

- Finger roll
Practice minimum 5 times over 1 week.
- Nasal intubation
Practice 3 times weekly for 2 weeks.
- Dials/buttons
Practice 3 times weekly for 2 weeks.
- Nasal Topical Analgesia
Practice nasal administration of medication using an atomizer-type device to ensure coating of nasal and pharyngeal mucosa.
- TN-Eso
Practice 3 times weekly for 2 weeks, then at least once a week for 4 months.
- TN-Eso + biopsy
Practice 3 times weekly for 2 weeks, then at least once a week for 4 months.
- TN-EGD
Practice 3 times weekly for 2 weeks, then at least once a week for 4 months.
- TN-EGD + biopsy
Practice 3 times weekly for 2 weeks, then at least once a week for 4 months.
- TN-EG
Practice 3 times weekly for 2 weeks, then at least once a week for 4 months.
- TN-EG + biopsy
Practice 3 times weekly for 2 weeks, then at least once a week for 4 months.
- VR mastery
Practice on yourself three times over 1 week, then practice setting up for someone else three times.



evoendo[®]

clinicalsupport@evoendo.com
evoendo.com