

Gabon

CHALLENGE

- Help manage sand in mature, offshore field
- Manage OHGP logistical and operational complexity
- Operate without Halliburton personnel onsite because of restrictions

SOLUTION

- Deploy 4-in. EHS system in 6-in. openhole
- Spot filter-cake breaker before EHS activation
- Eliminate washpipe requirement

RESULT

- Completed operations with remote Halliburton support
- Activated EHS 30 minutes after depth was reached
- Verified compliant screen installation using rig data
- Reduced operational complexity and HSE risks
- Lowered total cost of operations

New sand-control completion method succeeds in remote region

Endurance Hydraulic Screen® system set in 30 minutes

Overview

The operator of a mature offshore field in Gabon required a sand-control solution capable of delivering reliable performance under logistical constraints unique to the remote region. To meet this requirement, the operator selected the Endurance Hydraulic Screen® (EHS) system, a technology newly introduced to the area and chosen for its installation simplicity, operational flexibility, and life-of-well reliability.

The deployment environment demanded a system that could integrate seamlessly with existing completion components already available in country and help provide added wellbore support to aid production stability in a mature formation. Because the operator faced both access restrictions and technical complexity, the EHS system offered a pathway that may help reduce operational risk and allow for consistent, effective sand management in this isolated offshore setting.

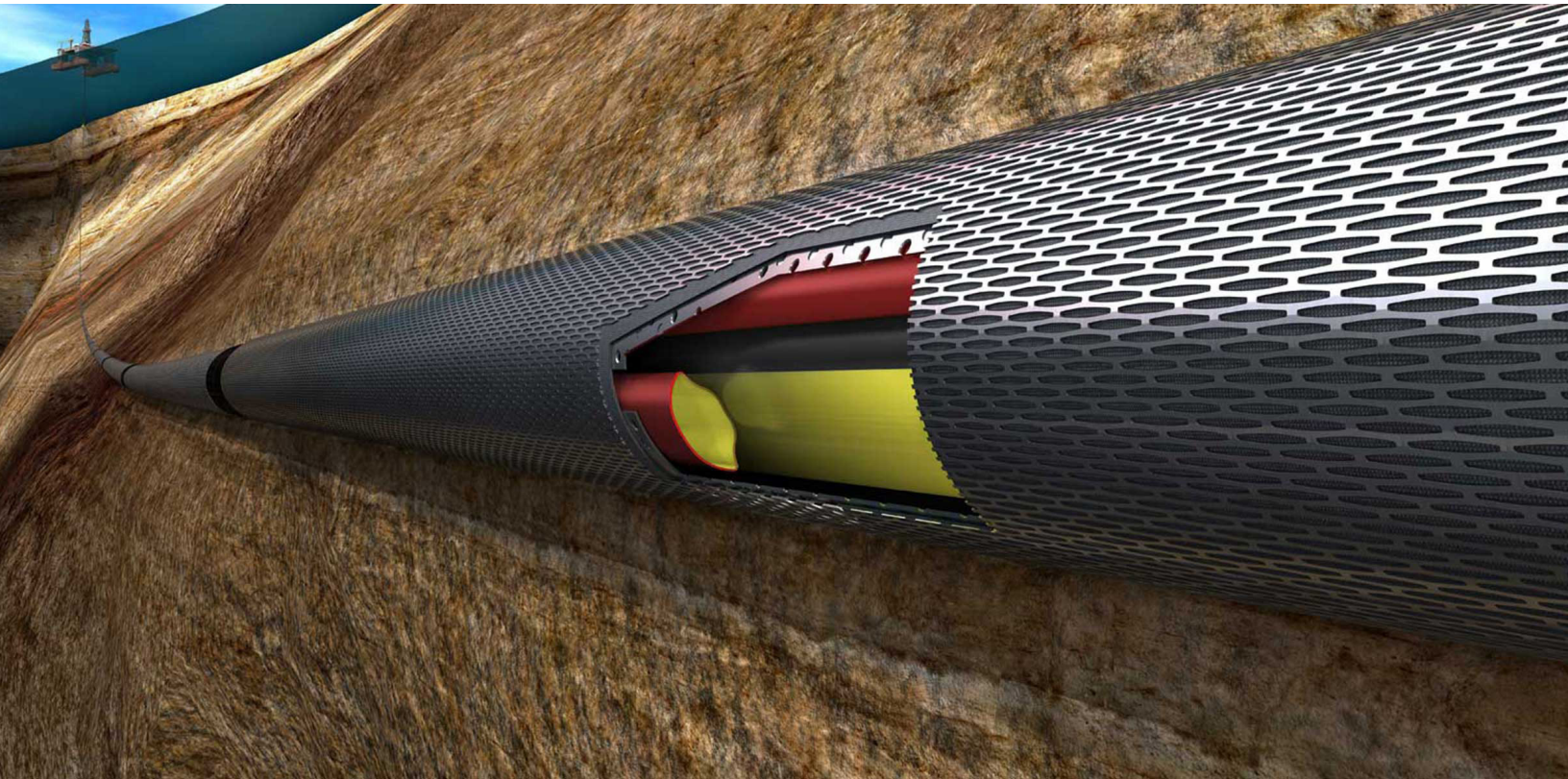
Challenge

Openhole gravel packing (OHGP) in this environment presented significant logistical and operational challenges, so the team selected an alternative. The team configured the completion design using existing equipment inventory available in-country. In addition, because of local restrictions, Halliburton personnel were not present at the wellsite to perform the full installation and therefore provided only remote support.

Solution

To help simplify operations and reduce the requirement for heavy pumping equipment, Halliburton recommended deployment of a 4-in. EHS system in the 6-in. open hole. The system's flexibility provided seamless integration with the existing completion design. The EHS system also offered washdown capability during deployment and allowed the operator to spot filter-cake breaker immediately before hydraulic activation, without using washpipe. The onsite team verified successful installation through real-time and rig-acquired data.





Result

With only remote Halliburton support, the operator adopted the newly deployed sand-control method in the region and reduced operational complexity, lowered HSE risk exposure, and decreased total cost of operations compared to traditional OHGP techniques. This successful installation demonstrated that the EHS system can serve as a viable alternative in remote or access-restricted locations and provides operators with a simplified, reliable, and lower-risk path to high-quality sand-control completions.

The operator implemented the newly deployed sand-control method and reduced operational complexity, minimized HSE risks, and lowered overall costs compared to conventional OHGP techniques.

The Endurance Hydraulic Screen[®] system helps reduce operational complexity, HSE risks, time, and costs.

For more information, contact your local Halliburton representative or visit us on the web at www.halliburton.com

Sales of Halliburton products and services will be in accord solely with the terms and conditions contained in the contract between Halliburton and the customer that is applicable to the sale.

H015142 04/26 © 2026 Halliburton. All Rights Reserved.

halliburton.com

HALLIBURTON