

Angola

# Expandable liner hanger system streamlines deepwater well completion

Operator achieves reliable installation and significant cost savings in challenging subsea environments

## CHALLENGE

EEAL required a reliable solution for:

- Offshore deepwater wells
- Subsea wellhead

## SOLUTION

The VersaFlex® Big Bore ELH system for its:

- Simple, robust, and reliable design
- Dependable expansion process to create 360° liner top seal with bidirectional anchoring

## RESULT

First successful installation for operator:

- Reduced rig time
- Saved by approximately three days

## Overview

Esso Exploration Angola (Block 15) Limited (EEAL) needed a reliable liner hanger solution for deepwater, subsea wells. The VersaFlex® Big Bore expandable liner hanger (ELH) proved to be a reliable solution after its first successful installation in a 19° inclination, with no issues related to health, safety, and the environment (HSE), service quality (SQ), or nonproductive time (NPT).

## Challenge

Landing and locating the supplemental casing adapter with the mating casing hanger proved to be unobtainable with other solutions. Thus, the operator required a liner hanger system that could act independently of the supplemental casing adapter and provide sufficient hang load capacity and liner top sealing capabilities. Additionally, a quick turnaround of new equipment was necessary to meet the drilling schedule.



The operator set and cemented the 16-in. liner on time without any NPT or HSE, SQ, well-control issues.

## Solution


Halliburton proposed the VersaFlex Big Bore ELH as an alternative to the supplemental casing hangers. This solution offered a simple, robust, and reliable design. Additionally, Halliburton provided casing equipment which consisted of: an SSR-II™ dual wiper plug set, landing collar, MCXV wiper darts, Super Seal II® float collar and dual Valve NaviSHOE eccentric float shoe.

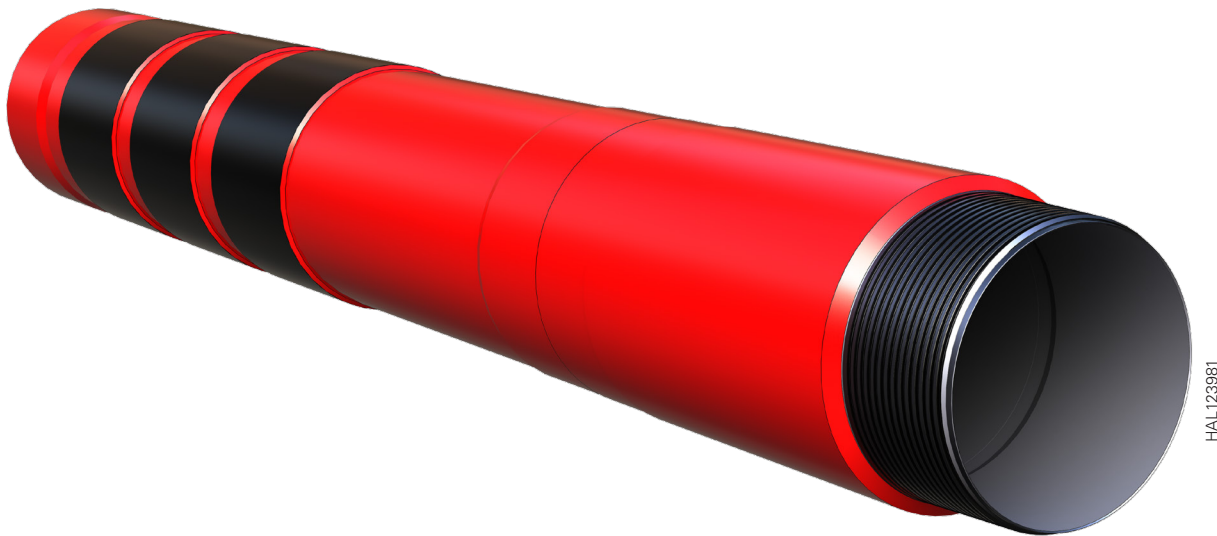
The VersaFlex Big Bore ELH system was designed to pass through most wellhead restrictions and create a reliable 360° liner top seal with bidirectional anchoring, to enable high hang load capacities.

## Result

The VersaFlex® Big Bore ELH system was set and the running tool released in less than 1.5 hours. This successful first installation for this operator reduced rig time and helped avoid USD millions in remediation. If the system had been deployed in the previous three wells, it could have potentially eliminated 10 days of NPT in addition to unnecessary openhole exposure and ballooning events.

Halliburton provided EEAL with a viable solution completed within the specified timeline by competent field personnel. This operation demonstrated the superior performance and reliability of the VersaFlex Big Bore ELH system.

The VersaFlex®  
Big Bore ELH system  
saved the operator  
**three days** of rig time. 



VersaFlex® Big Bore ELH system

For more information, contact your local Halliburton representative or visit us on the web at [www.halliburton.com](http://www.halliburton.com)

At Halliburton we collaborate and engineer solutions to maximize asset value for our customers. All products and service solutions are available as integrated offerings or as discrete services, based on customer requirements.

H014681 11/24 ©2024 Halliburton. All Rights Reserved.

[halliburton.com](http://halliburton.com)

**HALLIBURTON**