

Well Intervention

Propellant tubing punch

APPLICATIONS

- Pipe recovery and well abandonment
- Pressure equalization and fluid circulation
- Cement placement and flow path creation
- Punching mandrels, casing, and control lines

FEATURES

- Punch up to 5 holes on a single radial plane
- Shock-free operation protects sensitive electronics
- Compatible with RF-safe and addressable igniters
- Supports tubing-conveyed and e-line deployment

BENEFITS

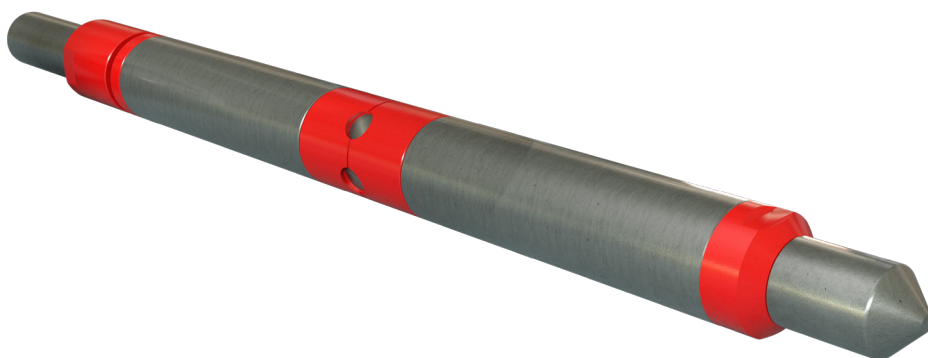
- Prevents shock-induced tool failures
- Delivers greater flow area per interval
- Can punch multiple tubulars in one run
- Enables faster plug-punch-log operations
- Conveyance: wireline, slickline, tractor, and tubing

Overview

The creation of reliable flow paths in downhole tubulars is essential for pressure equalization, fluid circulation, and cement placement. This is especially true in pipe recovery and well abandonment operations. Conventional punching methods often rely on high-explosive or chemical cutters, which can generate shock loading, leave debris, and require multiple runs, increasing risk to sensitive electronics and driving non-productive time (NPT).

The Halliburton Propellant tubing punch offers a safer, more efficient alternative. Using a solid-propellant, non-detonating (deflagrating) reaction, the tool focuses combustion gases through a precision nozzle to ablate the tubular wall and produce clean, high-velocity perforations. This shock-free design enables compatibility with sensitive electronics and supports combination strings for plug-punch-log workflows in a single run.

Engineered for versatility, the Propellant tubing punch can create one to five holes on a single radial plane. It is compatible with RF-safe and addressable electronic igniters, as well as pressure-actuated firing heads for tubing-conveyed operations. Its ability to puncture multiple tubulars and produce greater flow area per interval improves operational efficiency, reduces trips, and supports safer, faster wellsite execution.



Propellant tubing punch

Propellant tubing punch specifications

TOOL DESCRIPTION	COLLAPSE RATING (PSI)	SHIPPING CLASS	HOLES	TARGET TUBING
1.250-in. propellant punch	10,000	1.4	1	1.750 to 2.000
1.688-in. propellant punch	10,000	1.4	1	2.375 to 2.875
1.938-in. propellant punch	10,000	1.4	1 to 2	2.875 to 3.500
2.500-in. propellant punch	10,000	1.4	1 to 2	3.500 to 4.500
2.625-in. propellant punch	10,000	1.4	1 to 5	4.5

For more information, contact your local Halliburton representative or visit us on the web at www.halliburton.com

Sales of Halliburton products and services will be in accord solely with the terms and conditions contained in the contract between Halliburton and the customer that is applicable to the sale.

H015105 09/25 © 2024 Halliburton. All Rights Reserved.