

Well Intervention

Powered Mechanical Services

FEATURES

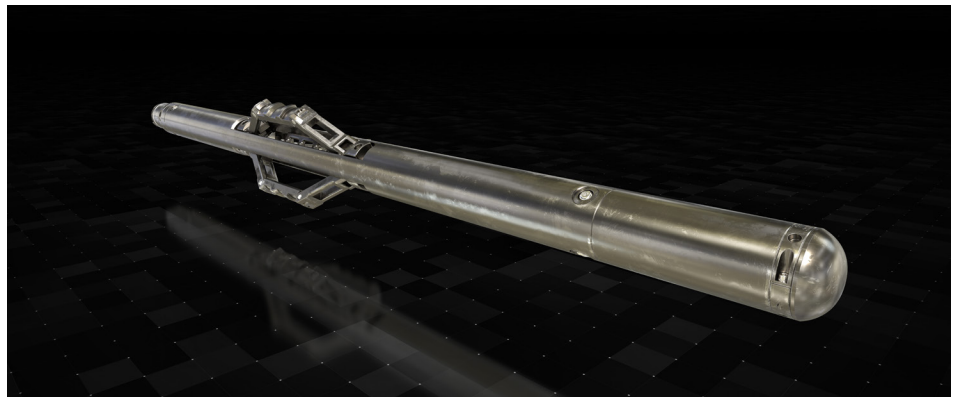
- 28,000 lbf. force to open and close all Halliburton FS2 Barrier Isolation valves
- 2.25 in. RIH OD to pass the 2.515 in. ID in the 7 in. FS2
- Lands in the Contingency Profile of the FS2
- Sensor Sub to confirm shifting operation
- 3D Surface readout Interactive display
- Hepta, mono, and mono-coated cable deployable and tractor compatible

BENEFITS

- Electro-mechanical design for precise movement of the actuator, shifter, and anchor
- Bidirectional to allow multiple shifting operations in a single run
- Three large anchor pads to minimize pipe impression and eliminate slip under load
- Two different anchor sizes for pipe up to 7 in.
- Electrical feedthrough line through the high-force actuator to support communication to lower tools
- 350°F (177°C) and 20,000* psi (138 MPa)

ClearShift™ service

Electro-mechanical selectable shifter to mechanically override barrier isolation valves, ICVs, or completion devices that require manipulation



Overview

ClearShift™ service employs advanced electro-mechanical technology to handle contingency override scenarios in downhole completion devices. These include barrier isolation valves, annular isolation valves, lubricator valves, internal control valves, electromagnetic safety valves, and standard mechanical shifting requirements with DuraSleeve® sliding sleeve production apparatus and SSD non-elastomer circulation sleeves.

ClearShift service has three distinctive sections: the anchor, actuator, and high-expansion shifter. The small run-in-hole (RIH) OD of 2.25 in. passes through all barrier isolation valves and offers selectability for multi-ICV scenarios where landing in the proper valve is critical.

The anchor uses three large 3 × 1-in. pads and can be set up in a 12.25-in. RIH to cover pipe from 3.5 to 5.5 in. or a larger 3.3-in. RIH to cover pipe from 4.5 to 7.0 in. The large pad cross-sectional area allows the device to hold a radial force greater than 50 klbf to prevent slipping under load and still minimize indentation or slip mark impressions in the pipe.

The electrical feedthrough actuator has a stroke length of 2.2 in. with an accuracy of 0.25 in. and can pull up to 28,000 lbf. This allows the ClearShift service tool to open any device and close valves with a shear ring. The tool is designed with an electrical connection so any tool can be run below the actuator.

The high-expansion shifter was designed to land into the contingency profile of the FS2, similar to the large-OD BS1 shifting tool. This feature ensures the shifter has sufficient surface area to lock in, which is critical if the FS2 must be closed. The 2.25-in. RIH allows the tool to pass through the small 7-in. and the larger 9 5/8-in. FS2 valves.

ClearShift service is part of the powered electro-mechanical portfolio, which includes ClearTrac® wireline tractor service, ClearCut® slim, single- and rotary-blade cutters, ClearBail suction bailer service, and ClearMill milling service.

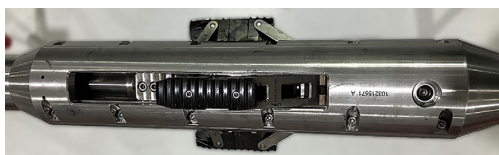
ClearShift™ service electro-mechanical selectable shifter specifications

DESCRIPTION	DATA
Tool outside diameter	2.25 in. (57.2 mm)
Maximum temperature	350°F (177°C)
Maximum pressure*	20,000 psi (138 MPa)
2.25-in. anchor range	2.4 to 5.2 in. (60. to 132.1 mm)
3.3-in. anchor range	4.8 to 6.5 in.
Minimum ID restriction	2.3 in. (58.4 mm)
Actuator force	28,000 (124,550 N)
Actuator length	12.2 in. (309.9 mm)
Shifter max opening	5.3 in. (134.62 mm)
Tension	30,000 lbf (133,447 N)
Compression	30,000 lbf (133,447 N)
Tool weight	400 lb (181.4 kg)
Sensor sub	Pressure, temperature, downhole tension inclination axial and radial vibration
Wireline and deployment	Hepta, Mono, or coated, gravity and tractor

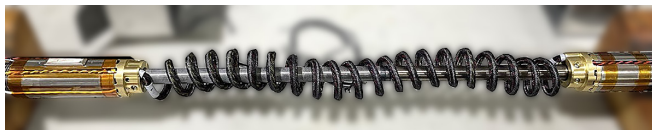
* 30,000-psi option available upon request



1 × 3-in. anchor pads



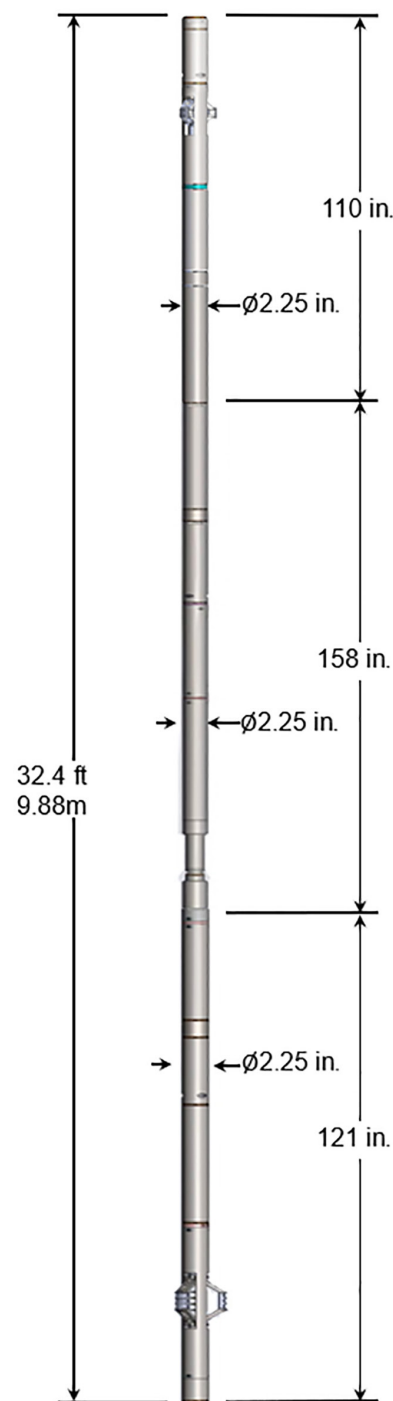
Large anchor setup for 7-in. pipe



Electrical feedthrough actuator



High-expansion shifter



For more information, contact your local Halliburton representative or visit us on the web at www.halliburton.com

Sales of Halliburton products and services will be in accord solely with the terms and conditions contained in the contract between Halliburton and the customer that is applicable to the sale.

H014929 06/25 © 2025 Halliburton. All Rights Reserved.

halliburton.com

HALLIBURTON