

Multifinger Imaging Tool (MIT) Service

PROVIDES DETAILED INFORMATION OF THE INSIDE CONDITION OF PIPE

OVERVIEW

Halliburton offers a wide variety of multi-arm calipers that provide high-resolution details about the condition of the casing or tubing, including accurate measurements of its internal radius. The MIT tool is available for most casing and tubing sizes. The tool can operate 24 to 60 arms and is deployed on wireline, slickline, or coiled tubing. All data collected is used to generate 3D images of the casing or tubing.

APPLICATIONS

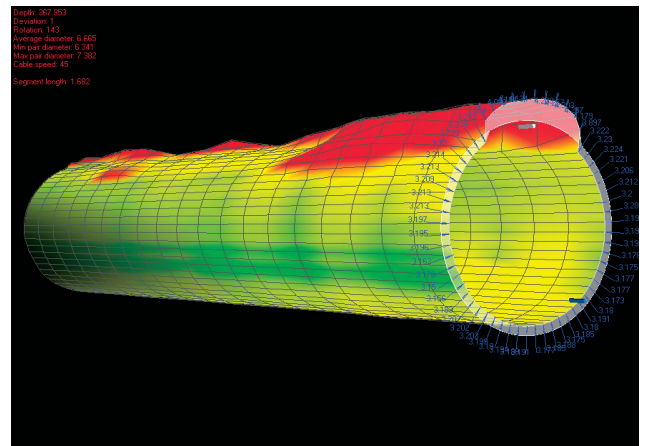
- » Detail the condition of casing or tubing with accurate internal radius measurements
- » 3D images of casing or tubing

FEATURES

- » Comes in several sizes to work in a wide range of casing
- » Can be deployed on wireline, slickline, or coiled tubing
- » Can obtain data in horizontal wells
- » Can be combined with production logging or Cement Bond Tool
- » Accurately identifies casing damage, such as holes, splits, or cracks, and their depth in the wellbore
- » Can be used for scale evaluation
- » Provides a method for mapping perforations

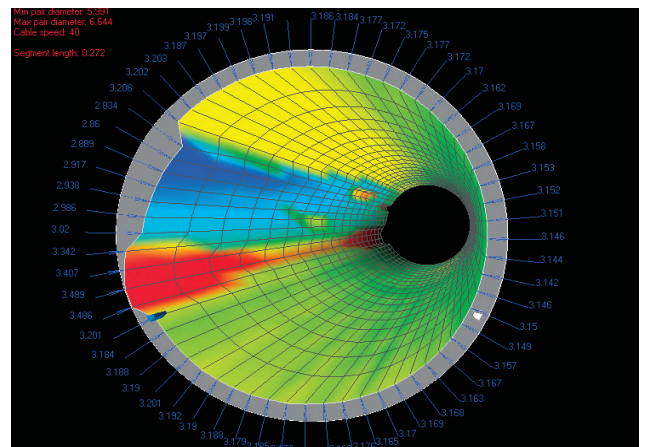
ASSOCIATED ANSWER PRODUCTS

- » Imaging software available



This 3D view shows an enlarged OD caused by perforating the well.

HAL10363



This 3D image shows general deep corrosion with light deposits in the body possibly caused from cable movement.

HAL10364

Dimensions and Ratings

Number of Arms	Length ft (m)	Diameter in. (mm)	Maximum Pressure (MPa)	Maximum Temperature °F (°C)	Weight lb (kg)
24	4.22 (1.3)	1.69 (42.9)	15,000 (103.4)	350 (176.6)	21 (9.4)
40	4.53 (1.38)	2.75 (69.9)	15,000 (103.4)	350 (176.6)	70 (31.8)
60	5 (1.52)	4.50 (114.3)	20,000 (137.9)	350 (176.6)	97 (44.0)

Borehole Conditions

Borehole Type	Open <input type="checkbox"/>	Cased <input checked="" type="checkbox"/>
Borehole Fluids	Salt <input checked="" type="checkbox"/>	Fresh <input checked="" type="checkbox"/> Oil <input checked="" type="checkbox"/> Air <input checked="" type="checkbox"/>
Recommended Maximum Logging Speed	30 ft/min (9.14 m/min)	
Tool Positioning	Centralized <input checked="" type="checkbox"/>	Eccentrized <input type="checkbox"/>

For more information, contact your local Halliburton representative or visit us on the web at www.halliburton.com

Sales of Halliburton products and services will be in accord solely with the terms and conditions contained in the contract between Halliburton and the customer that is applicable to the sale.

H012326 8/16 © 2016 Halliburton. All Rights Reserved.