

Well Intervention
Powered Mechanical Services

ClearCut® Slim cutter

Electromechanical, single-blade cutter to perform machine-shop cuts on 2 3/8 to 3 1/2-in. pipe

FEATURES

- Industry's smallest and advanced electromechanical cutter for API 5 CT and 2 3/8 to 3 1/2-in. CRA pipe
- Performs flare-free machine shop cuts using a parting and grooving cutting insert
- 1 11/16-in. tool outside diameter (OD) to pass the smallest ID restrictions
- Deployment on RELAY™ digital slickline system or e-line
- Cuts in compression, neutral, or tension
- Surface readout display to monitor cut performance
- Does not damage adjacent tubular
- Slow feed rate for small debris

BENEFITS

- No dangerous goods or explosive escort requirement
- Severs API 5 CT tubular, to include GRE
- Two cutting head sizes to sever 2 3/8, 2 7/8, and 3 1/2-in. pipe
- Customized anchors for various pipe sizes
- Tool BHA includes inline centralizer
- Cut time less than 15 minutes
- Run on third-party e-line unit

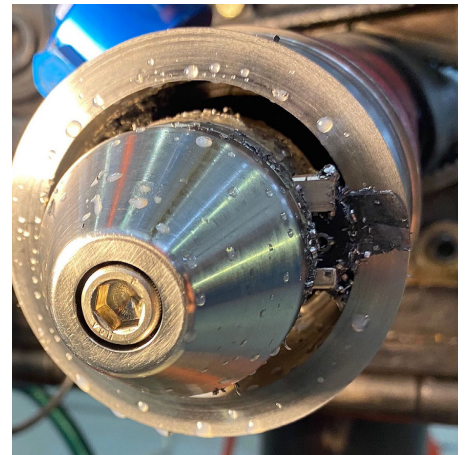
Overview

The ClearCut® Slim cutter is a 1 11/16-in. OD, electromechanical, single-blade cutter that can be deployed on the RELAY™ digital slickline system (RDSL) for a low-carbon, small-footprint solution. It severs pipe from 2 3/8 to 3 1/2 in. with a flare-free, machine-shop quality cut. The cutter incorporates technology from larger-OD, electromechanical tools and features a high-efficiency brushless motor, custom controller, and specialized anchors to minimize cutting insert vibration. An optimized feed rate helps with small, manageable debris.

The ClearCut Slim cutter employs an alkaline or lithium power pack to ensure a non-explosive cutting solution. Cutting time varies by pipe size, but a full 360° tubular severance can be completed in less than 15 minutes from the initial contact of the cutting insert with the pipe ID. Consistent with larger ClearCut® SB tools, the blade restricts the cut to the initial pipe OD to safeguard adjacent tubular.

Applications

The ClearCut Slim cutter is optimized for RDSL to enable deployment with a compact, lightweight slickline unit ideal for small, unmanned, offshore platforms. It can also be configured for e-line operation, as necessary.



3 1/2 in., 15.5-ppf 13CrP110



2 3/8 in., 5.3-ppf 13CrL80



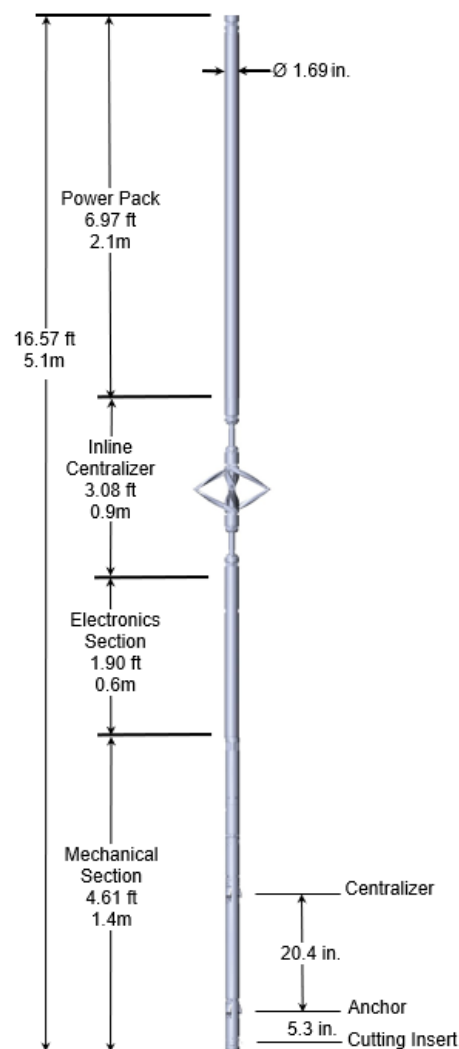
2.125 and 1.69-in. cutting heads

ClearCut® Slim electromechanical single-blade cutter specifications

CATEGORY	SPECIFICATION
Tool outside diameter*	1.69 in. (42.9 mm)
Maximum temperature**	250°F (121°C)
Maximum pressure	15,000 psi (103.4 MPa)
1.69-in. head cutting range	2 3/8 to 2 7/8-in. thickness 0.41 in.
2.125-in. head cutting range	3 1/2 and 4-in. thickness 0.51 in.
Minimum ID restriction	1.75 in. (44.5 mm)
Maximum pipe OD	4.0 in. (101.9 mm)
Tension	20,000 lbf (88,964 N)
Compression	20,000 lbf (88,964 N)
Tool length	12.92 ft (3.94 m)
Tool weight	135 lb (61.3 kg)
Wireline	RDSL and monocable

*Two head sizes: 1.69 and 2.125 in.

**350°F flask option available upon request



For more information, contact your local Halliburton representative or visit us on the web at www.halliburton.com

Sales of Halliburton products and services will be in accord solely with the terms and conditions contained in the contract between Halliburton and the customer that is applicable to the sale.

H014989 06/25 © 2025 Halliburton. All Rights Reserved.

halliburton.com

HALLIBURTON