

**Well Intervention**

Powered Mechanical Services

**FEATURES**

- Flare-free, machine-shop cut using a parting and grooving cutting insert
- Cuts pipe from 3 1/2 to 9 5/8 in. and extension heads can increase cut thickness to 1.4 in.
- Severs all API 5 CRA tubular, including SM2535-125, 718, Inconel, and GRE
- Cuts in compression, neutral, or tension
- Surface readout display to monitor cut performance
- Adjustable cut speed for low debris
- Hepta or mono cable deployment

**BENEFITS**

- No dangerous goods or explosive escort requirement
- Reliable global track record to 350°F (177°C) and 20,000 psi (138 MPa)
- Six head sizes and five anchor setups available
- Multiple cuts in single deployment
- Can run on third-party e-line unit
- Combinable with the Halliburton Freepoint tool (HFPT)
- Will not damage the second tubular



## ClearCut® SB cutter

Electromechanical single-blade cutter to perform a machine-shop cut in pipe from 3 1/2 to 9 5/8 in.

**Overview**

ClearCut® SB uses the most advanced electro-mechanical cutting technology available to sever tubing, casing, drill pipe (DP) and heavy-weight drill pipe (HWDP). Using a high efficiency brushless motor and customized anchors, a machine shop quality flare-free cut can be completed in all API 5 CT (casing and tubing), CRA (corrosion resistant alloys), DP and HWDP, including glass reinforced epoxy (GRE), vacuum insulated tubing (VIT), and high nickel alloy SM2525-125 pipe.



ClearCut® SB cutter

To address a broad pipe selection, the tool has six different head options and six unique anchoring setups, with optionality to increase cut thickness to 1.4 inches for thick pipe and HWDP applications.

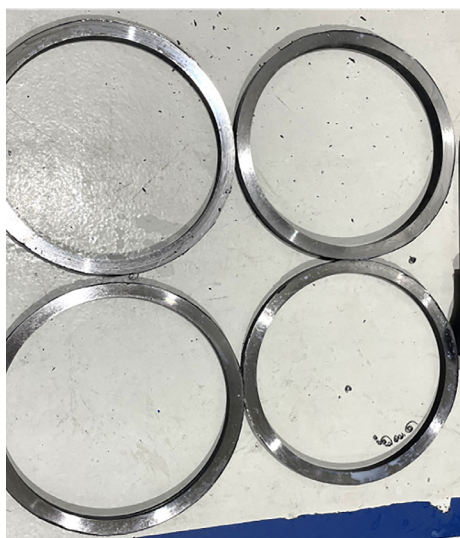
ClearCut SB can be run in combination with the Halliburton Freepoint Tool (HFPT) to quickly identify where the drilling BHA is stuck and immediately cut the DP or HWDP without pulling out of the hole.

There are no dangerous goods associated with the services and no requirement for an explosive escort allowing for an efficient intervention with reduced HSE risk.

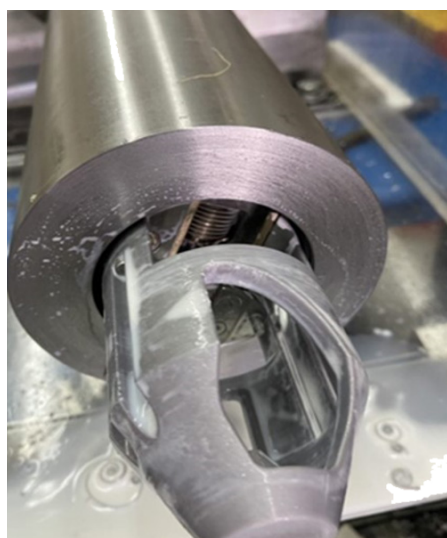


**ClearCut® SB e-line electromechanical cutter specifications**

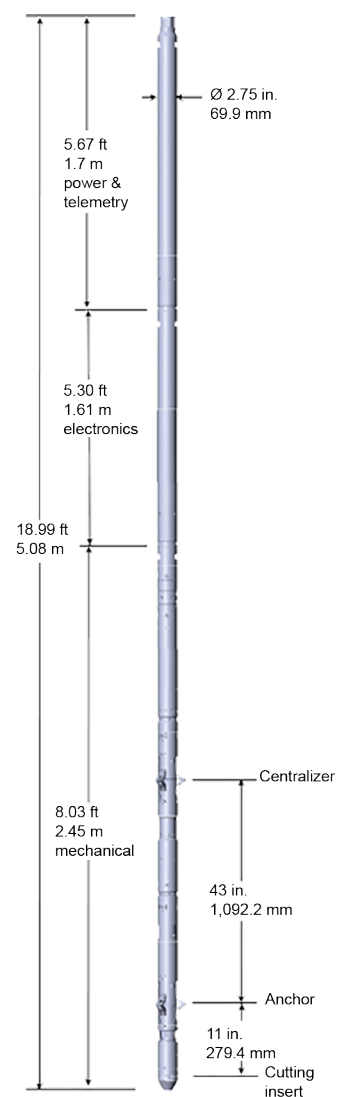
Tool outside diameter*	2.75 in. (69.9 mm)
Maximum temperature**	350°F (177°C)
Maximum pressure***	25,000 psi (138 MPa)
2.75-in. Head cutting range	2.85 to 5-in. thickness 0.75 and 1.2 in.
3-in. Head cutting range	3.06 to 5.6-in. thickness 0.75 and 1.3 in.
3.25-in. Head cutting range	3.31 to 6.1-in. thickness 0.75 and 1.4 in.
3.8-in. Head cutting range	3.90 to 7.2-in. thickness 1.2 in.
4.5-in. Head cutting range	4.56 to 7.7-in. thickness 1.2 in.
5.5-in. Head cutting range	5.60 to 9.7-in. thickness 1.2 in.
Minimum ID restriction	2.81 in. (88.9 mm)
Maximum pipe OD	9.625 in. (244.5 mm)
Tension	60,000 lbf (266,893 N)
Compression	60,000 lbf (266,893 N)
Tool weight	276 lb (125.2 kg)
Wireline	Hepta, mono, and coated cable



9 5/8-in. cuts with 5 1/2-in. head



2.75-in. extended head



**For more information, contact your local Halliburton representative or visit us on the web at [www.halliburton.com](http://www.halliburton.com)**

Sales of Halliburton products and services will be in accord solely with the terms and conditions contained in the contract between Halliburton and the customer that is applicable to the sale.

H014885 06/25 © 2025 Halliburton. All Rights Reserved.

**halliburton.com**

**HALLIBURTON**