

Well Intervention Powered Mechanical Services

FEATURES

- Dual-function tool with high-suction debris retrieval and high-pressure jetting modes
- Modular 5-ft collection chambers (fine, medium, large) support up to 35 ft of debris capacity
- Compact 2.25-in. OD fits through tight restrictions like 2.215-in. FS2 barrier isolation valves
- 3D surface readout display and sensor sub for real-time downhole diagnostics
- Compatible with hepta, mono, and coated-mono cable deployments and tractor systems
- Integrates with the Clear electromechanical portfolio (ClearTrac™ tractors, ClearCut™ cutters, ClearMill™ millers, ClearShift™ high-expansion shifters)

BENEFITS

- Restores access to completion hardware obstructed by debris, enabling mechanical shifting
- Reduces risk of tool sticking with on-command transition between suction and jetting
- Captures a wide range of debris sizes, from fine formation rubble to large elastomer fragments
- Customizable chamber configurations adapt to diverse wellbore conditions
- Improves operational control with surface readout (SRO) and real-time feedback
- Enhances intervention efficiency through compatibility with other Clear™ tools

ClearBail™ bailer service

Collection and jetting apparatus addresses downhole debris and swarf removal that block access to completion hardware

Overview

The ClearBail™ bailer service is a versatile, dual-function tool engineered to clear blockages in downhole completion hardware, such as barrier isolation valves and nipple locks. It operates in two modes: high-suction debris retrieval and high-pressure liquid jetting. This dual-action capability effectively removes viscous slurries including grease, drilling mud, pipe dope, proppant, sand, scale, metallic swarf, and elastomer fragments. Designed for precision and efficiency, ClearBail restores access to critical components requiring mechanical shifting or pulling.

Applications

The ClearBail™ bailer service functions as a high-performance downhole cleanup tool. It integrates a high-torque rotary unit with a high-displacement progressing cavity pump (PCP) to deliver up to 325 psi of suction pressure. The system handles debris ranging from 0.002-in. formation particles (e.g., sand) to metallic swarf and elastomer fragments up to 0.75 in. The PCP's design allows seamless transitions between suction and high-pressure jetting to clear blockages. For light-duty cleanup applications, the tool can be designed to output 15.5 gal/min jetting through a slow-rotating washing nozzle to scour the pipe wall.

Debris Collection Chambers

Engineered for versatile downhole debris management, the ClearBail™ bailer service features three specialized, modular collection chambers designed to capture a wide range of particle sizes:

Fine Screen Chamber

Captures particles from 0.03 to 0.05 in., targeting fine formation rubble entrained in the wellbore.

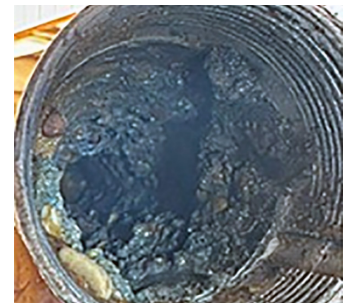
Medium Chamber

Collects fragments from 0.05 to 0.25 in., including larger sand, proppant, scale, and metallic swarf.

Large Chamber

Filters debris from 0.25 to 0.75 in., recovering larger metal fragments and elastomer pieces.

Each chamber is 5 ft long and modular, allowing up to seven chambers per run—providing 35 ft of debris collection capacity. This customizable configuration supports adaptability across diverse downhole environments and cleanup requirements.



Viscous slurries examples

ClearBail™ electromechanical bailer specifications

Tool outside diameter	2.25 in. (57.2 mm)
Maximum temperature	350°F (177°C)
Maximum pressure*	20,000 psi (138 MPa)
Minimum ID restriction	2.3 in. (58.4 mm)
Debris size maximum	0.75 in. (19.1 mm)
Debris size minimum	0.00197 in. (0.05 mm)
Maximum differential pump pressure	325 psi (2,240.8 KPa) bailing or jetting
Maximum pump flow rate	15 gal/min (US liquid) (58.8 L/min) bailing or jetting
Collectable debris materials	Proppant, sand, metallic swarf, elastomer pieces pipe scale, weighted drilling mud, solids
Tension	30,000 lb (133,447 N)
Compression	30,000 lb (133,447 N)
Tool weight	180 lb (81.6 kg)
Sensor sub	Pressure, temperature, downhole tension inclination axial, and radial vibration
Power and wireline	DC, hepta, mono, coated-mono, and tracto

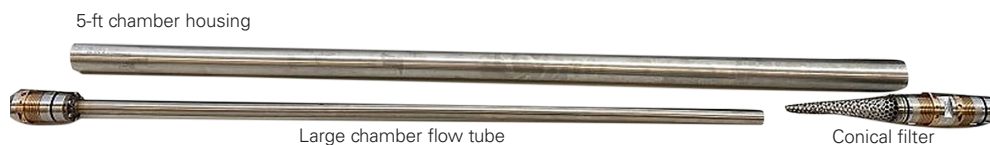
*30,000-psi option available upon request



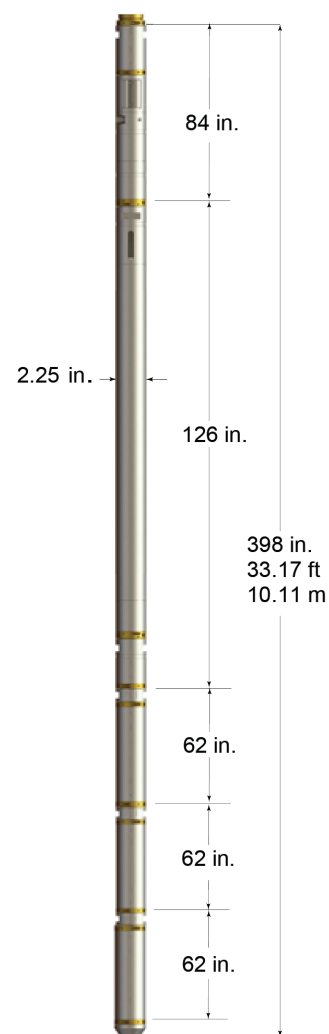
Small chamber housing



Medium chamber housing



Large chamber housing



For more information, contact your local Halliburton representative or visit us on the web at www.halliburton.com

Sales of Halliburton products and services will be in accord solely with the terms and conditions contained in the contract between Halliburton and the customer that is applicable to the sale.

H015036 08/25 © 2025 Halliburton. All Rights Reserved.