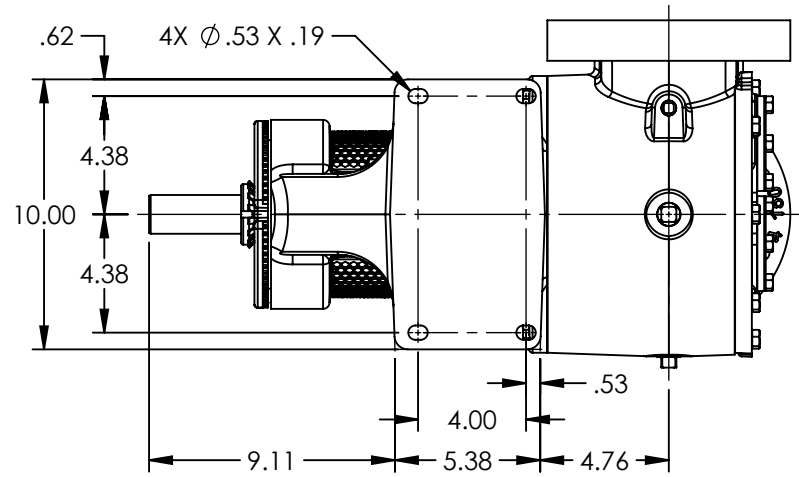
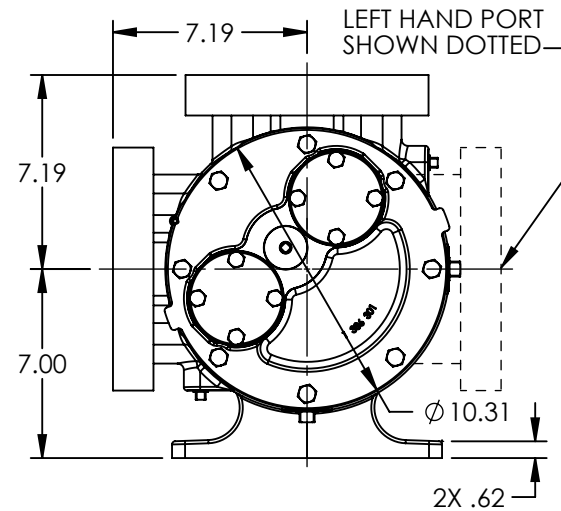
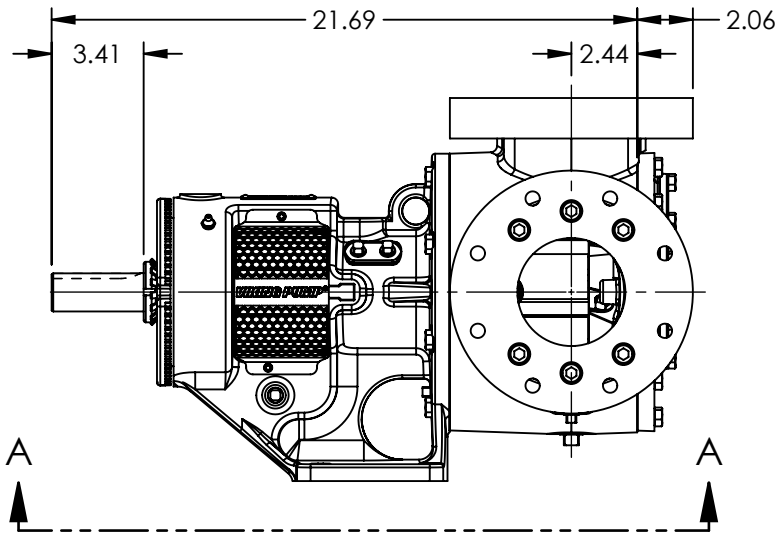


PORTS: 2X 4" FLANGES
 DRILLED AND TAPPED
 SUITABLE FOR USE WITH
 CLASS 125 ANSI FLANGES
 (124C, 1124C, 4124C)
 CLASS 150 ANSI FLANGES
 (123C, 4123C, 126C, 4126C, 127C, 1127C, 4127C)



VIEW A-A



MODELS WITH OPTIONAL FLANGED PORTS:
 LS123C, LS4123C, LS124C, LS1124C, LS4124C, LS126C, LS4126C, LS127C, LS1127C, LS4127C

NOTES:
 1. ALL DIMENSIONS ARE FOR REFERENCE ONLY.

STATE	Released	03/06/2024
DRAWN	dalcom	07/10/2023
CHECKED	DTL	03/05/2024

DIMENSIONS ARE IN
 INCHES
 PROJECT: E330
 WAS:



VIKING PUMP, INC.
 A Unit of IDEX Corporation
 Cedar Falls, IA 50613 U.S.A.
 VIKINGPUMP.COM

THIS DRAWING IS THE PROPERTY OF
 VIKING PUMP, INC. AND IS PROPRIETARY
 IN GENERAL AND DETAIL. IT SHALL NOT BE
 COPIED OR ITS CONTENTS REVEALED TO
 OUTSIDE PARTIES WITHOUT THE WRITTEN
 CONSENT OF VIKING PUMP, INC.

3D

DWG. NO.
 LV-4564

SHEET 1 OF 1

REV. A.1

03/06/2024