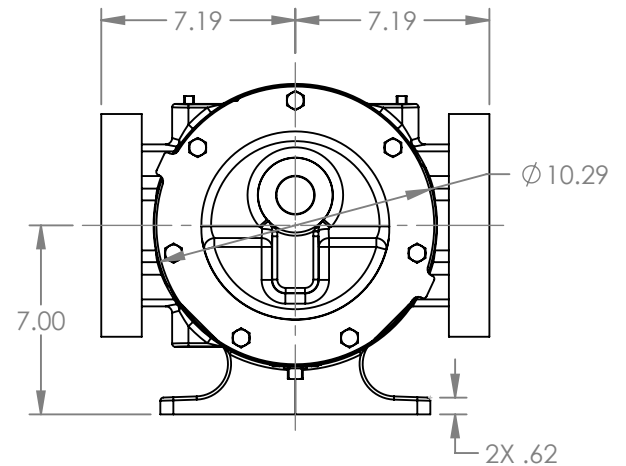
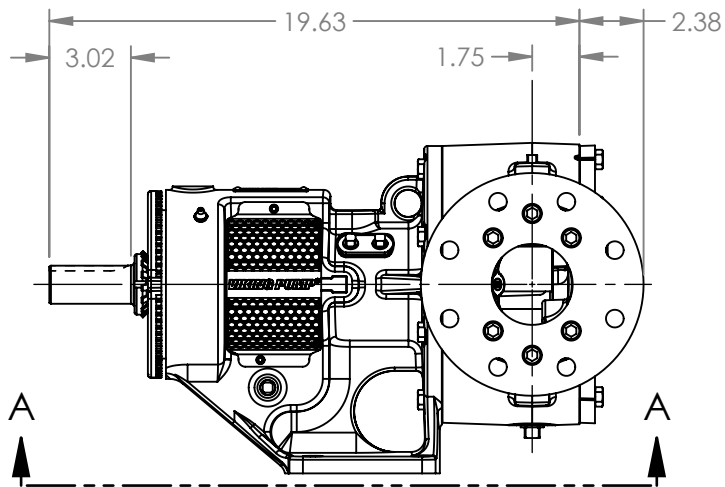
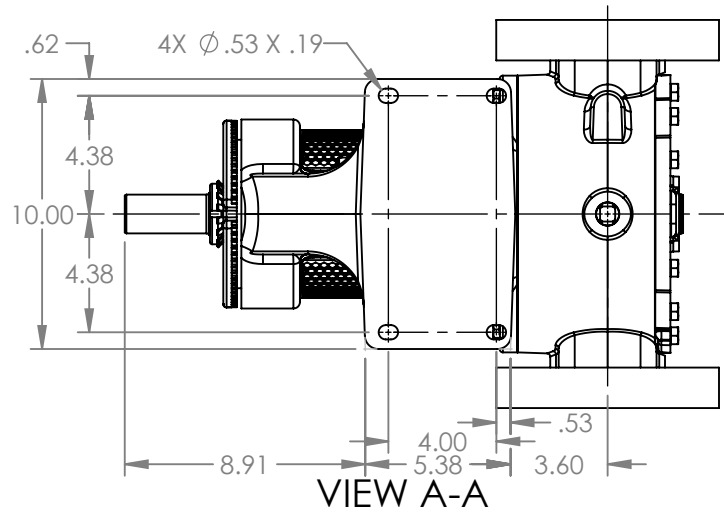


PORTS: 2X 3" FLANGES
 DRILLED AND TAPPED
 SUITABLE FOR USE WITH
 CLASS 300 ANSI FLANGES
 (123C, 4123C, 127C, 1127C, 4127C)



MODELS WITH OPTIONAL FLANGED PORTS:
 L123C, L4123C, L127C, L1127C, L4127C

NOTES:
 1. ALL DIMENSIONS ARE FOR REFERENCE ONLY.

STATE	Released	04/16/2024
DRAWN	dalcom	07/19/2023
CHECKED	JB	04/16/2024

DIMENSIONS ARE IN INCHES
PROJECT: E330
WAS:



VIKING PUMP, INC.
 A Unit of IDEX Corporation
 Cedar Falls, IA 50613 U.S.A.
 VIKINGPUMP.COM

THIS DRAWING IS THE PROPERTY OF
 VIKING PUMP, INC. AND IS PROPRIETARY
 IN GENERAL AND DETAIL. IT SHALL NOT BE
 COPIED OR ITS CONTENTS REVEALED TO
 OUTSIDE PARTIES WITHOUT THE WRITTEN
 CONSENT OF VIKING PUMP, INC.

3D

DWG. NO.
 LV-4594

SHEET 1 OF 1

REV. A.1

04/16/2024