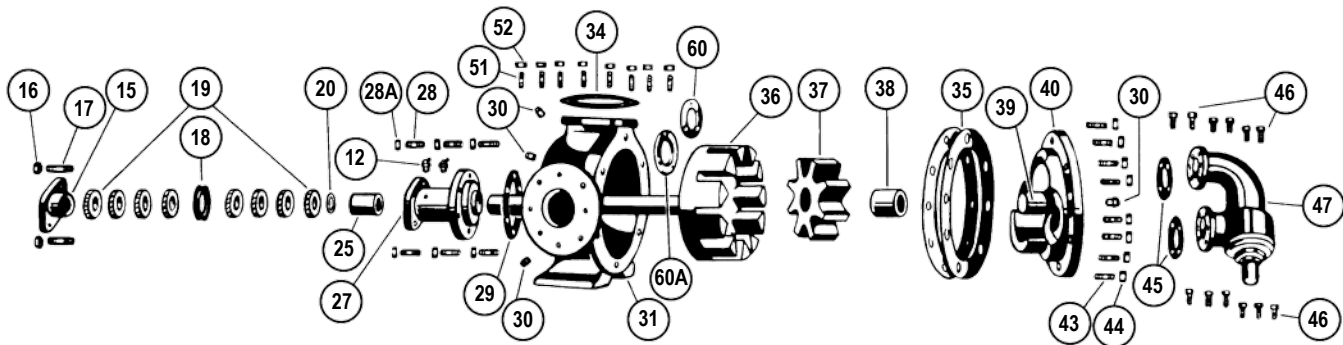


### Exploded Diagram for Series 32 & 34 (packed), Sizes Q, M and N

Exploded diagram representative of 32 Series. For 34 Series, see the technical service manual (TSM). List of the TSMs below.  
 Plus (Not Pictured): Series 32E Electrically Heated Pumps

**NOTE:** Kit may not apply to all models of these pumps. Contact your Viking Pump distributor with pump serial number for correct kit part numbers for that pump. Both a Seal Kit and a Rebuild Kit are needed to completely rebuild the pump. Additional non-kit parts, such as Rotor and Shaft Assembly, may also be required, depending on wear.



ITEM	PART (may not exactly match parts list descriptions)	PART INCLUDED IN:	
		SEAL KIT	REBUILD KIT
12	Grease Fitting		
15	Packing Gland	✓	
16	Packing Gland Nuts	✓	
17	Packing Gland Studs	✓	
18	Lantern Ring	✓	
19	Packing Rings	✓	
20	Packing Retainer Washer	✓	
25	Bushing for Rotor Bearing Sleeve		✓
27	Rotor Bearing Sleeve and Bushing Assembly		
28	Studs for Rotor Bearing Sleeve		✓
28A	Nuts for Rotor Bearing Sleeve		✓
29	Gasket for Rotor Bearing Sleeve	✓	
30	Pipe Plug		
31	Casing		
34	Flange Gaskets		

ITEM	PART (may not exactly match parts list descriptions)	PART INCLUDED IN:	
		SEAL KIT	REBUILD KIT
35	Head Gaskets	✓	
36	Rotor and Shaft Assembly		
37	Idler & Bushing Assembly		✓
38	Idler Bushing (included in Idler & Bushing Assy, 37)		
39	Idler Pin (Included in Head & Idler Pin Assy, 40)		
40	Head and Idler Pin Assembly		✓
43	Studs for Head		✓
44	Nuts for Head Studs		✓
45	Relief Valve Gasket	✓	
46	Capscrews for Valve ①		✓
47	Relief Valve (or cover plates on non-RV Pumps)		
51	Flange Studs		
52	Nut for Flange Studs		
60	Rotor Thrust Washer		✓
60A	Rotor Bearing Sleeve Washer		✓

① Quantity of capscrews depends on pump size.

Kits include parts for Relief Valve Head. Plain Head pumps will not need Relief Valve gaskets or capscrews. Discard extra parts.

Important safety information and rebuild instructions are found in the Technical Service Manual.

Download current Technical Service Manuals from [www.vikingpump.com](http://www.vikingpump.com):

TSM 000 - Installation, Startup, Troubleshooting,  
Preventative Maintenance, Do's & Don'ts

TSM 312 - General Purpose Pumps, Series 32 and 432, Sizes G-N

TSM 430 - Jacketed Asphalt Pumps, Series 34 and 434, Sizes HL-N