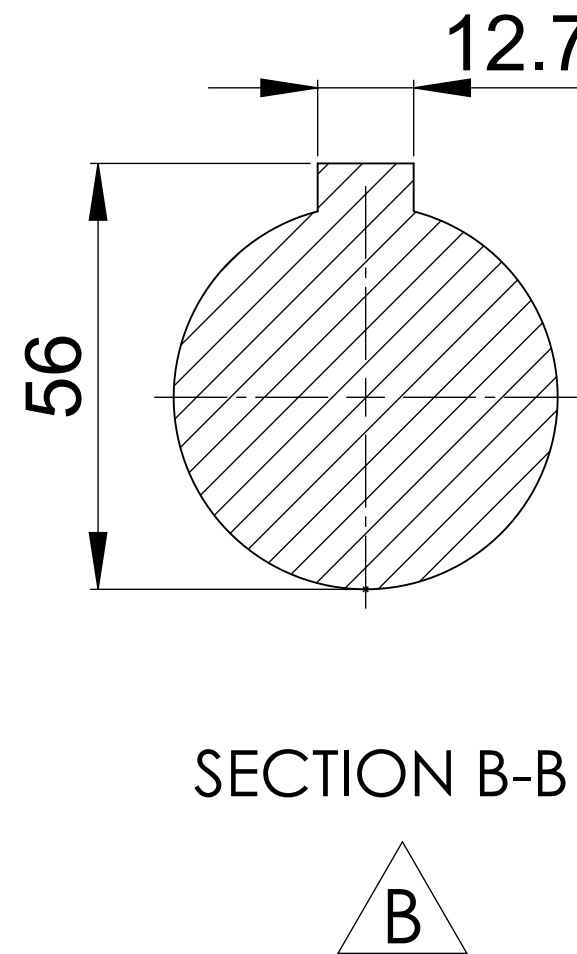
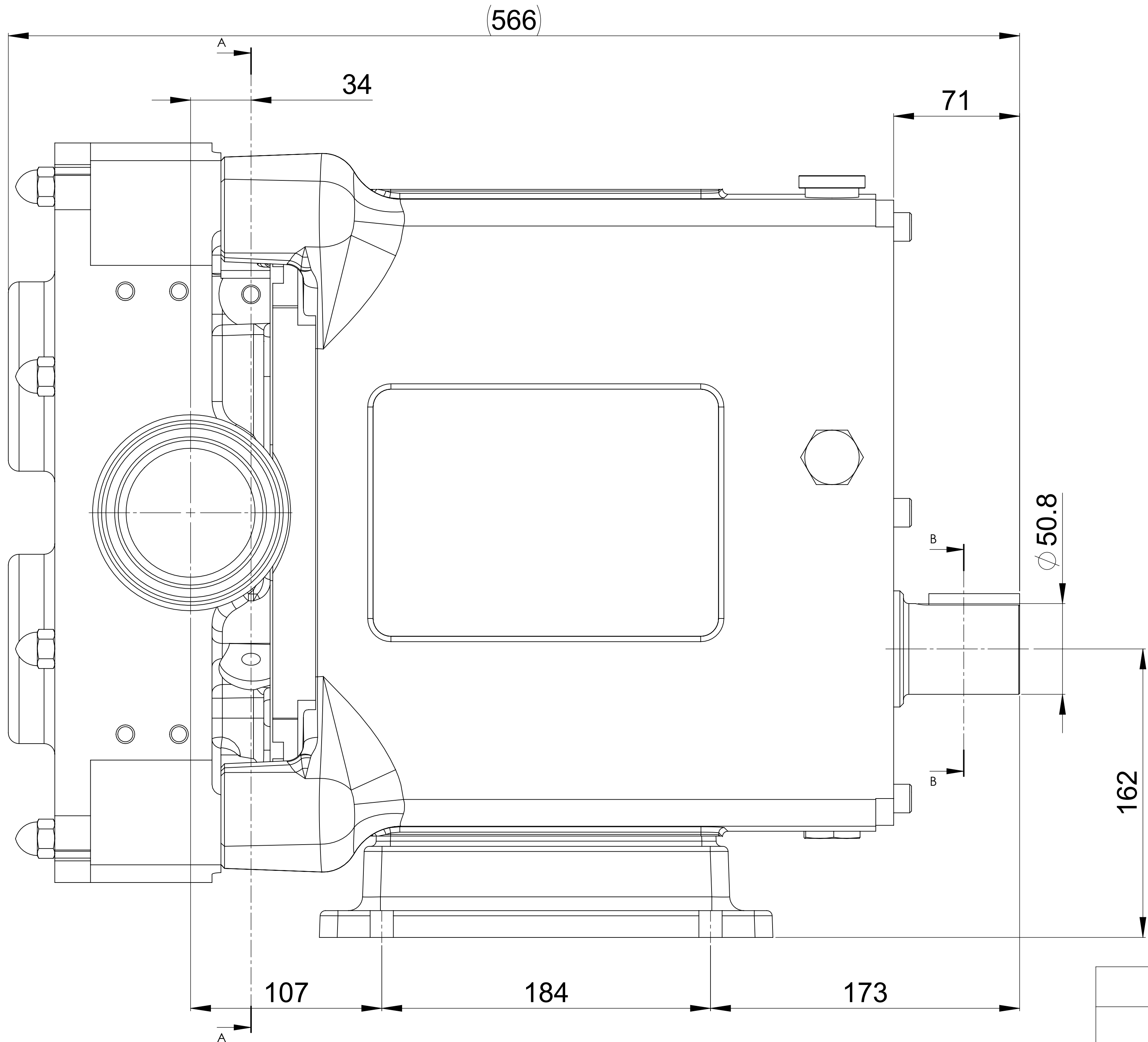
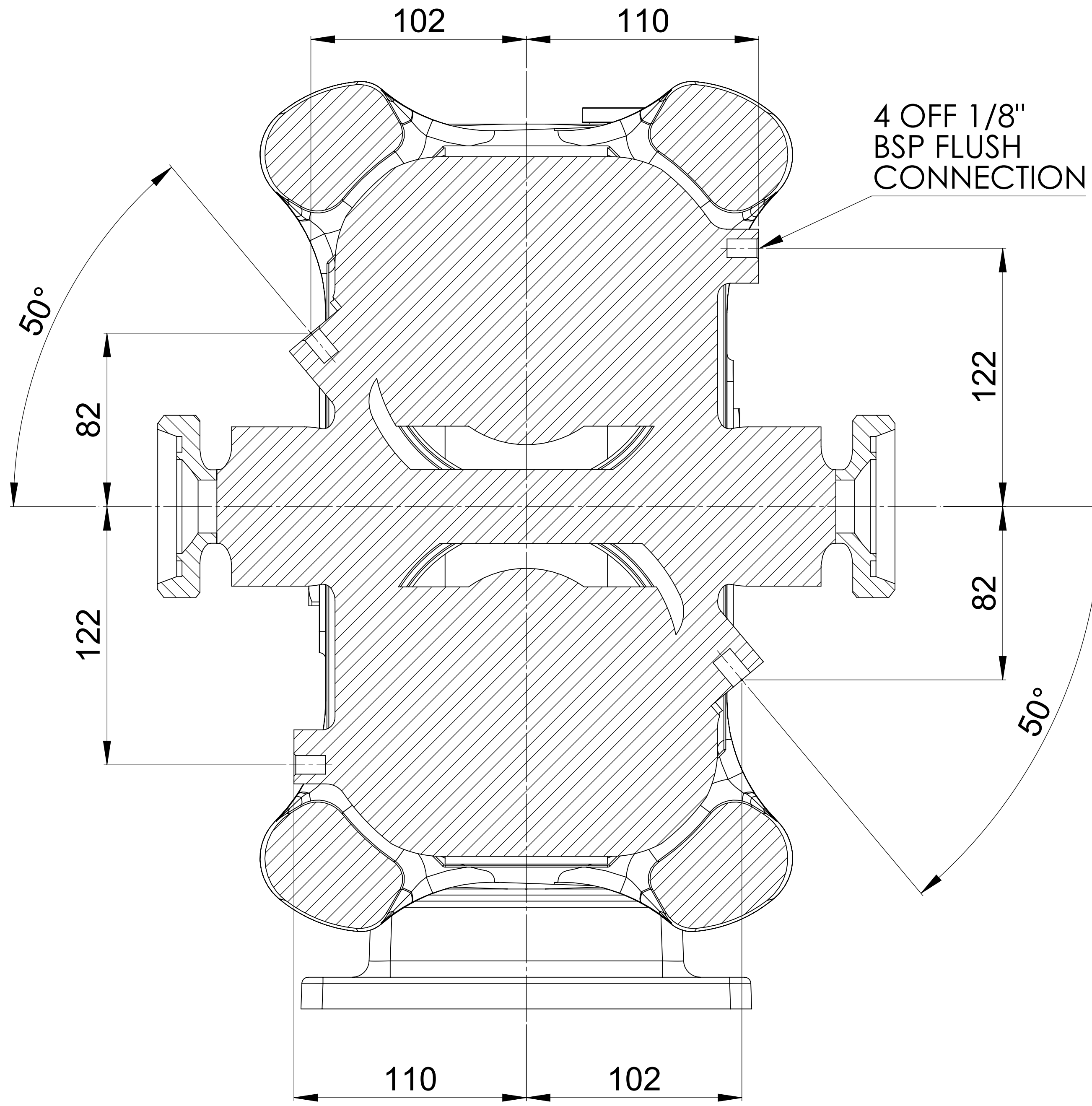
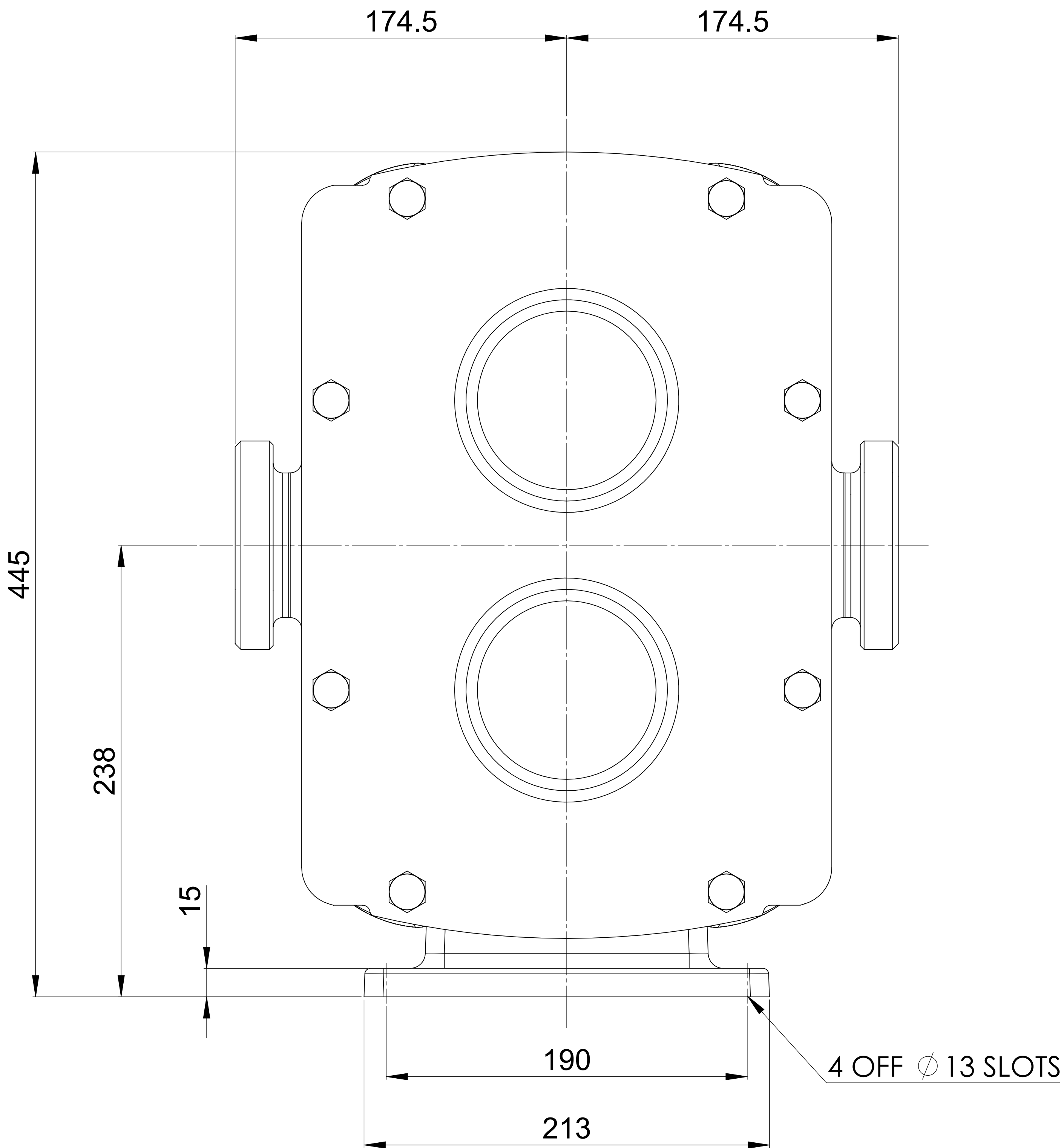


GENERAL ARRANGEMENT DETAILS

PUMP INFORMATION

PUMP MODEL	REVOLUTION - TWIN WING R1800X/31
LEFT/TOP CONNECTION	3" DIN 11851 MALE
RIGHT/BOTTOM CONNECTION	3" DIN 11851 MALE
DRIVE SHAFT POSITION	BOTTOM SHAFT DRIVE
FRONT COVER ADDITIONS	STANDARD
ROTORCASE ADDITIONS	STANDARD
GEARBOX ADDITIONS	STANDARD
PUMP ADDITIONS	FLUSHING

THIS IS NOT A CERTIFIED DRAWING, USE FOR GENERAL
INSTALLATION ONLY



UPDATED TO CURRENT STANDARDS	B	5/2/2024
ISSUED	A	4/1/2021
AMENDMENT	ISSUE	DATE