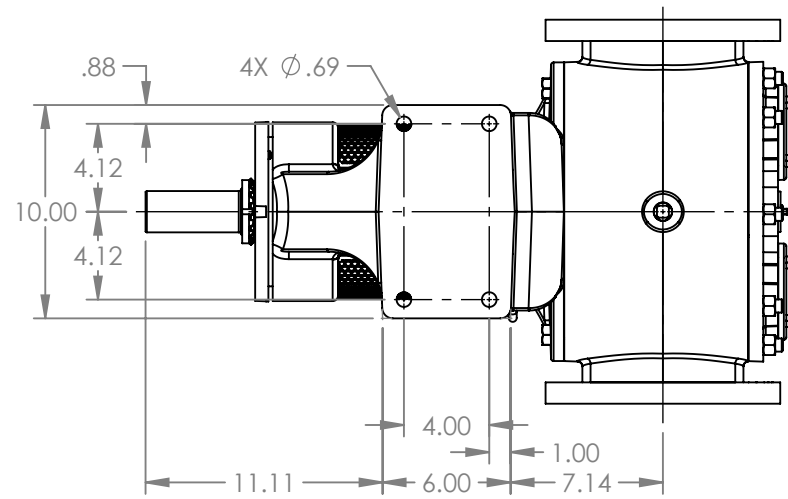
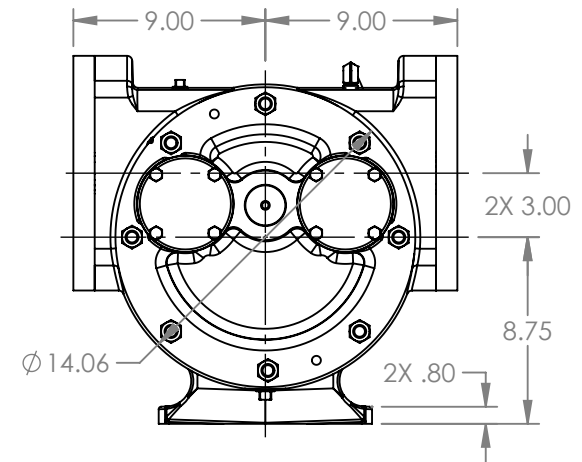
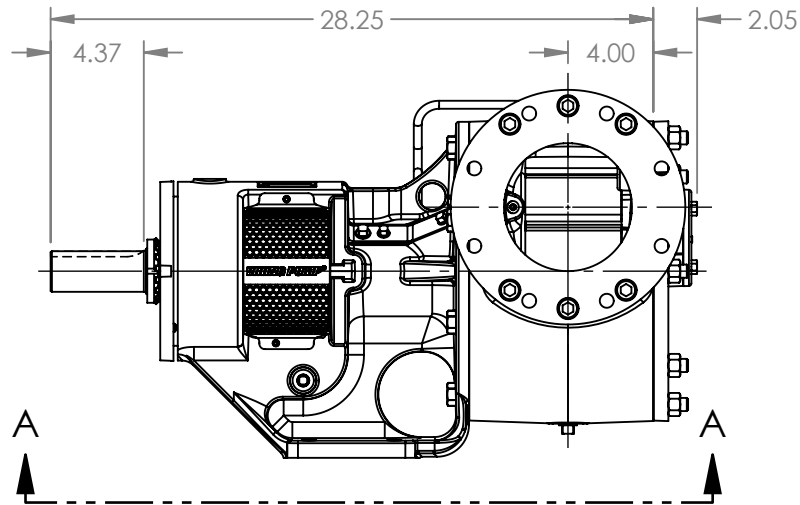


PORTS: 2X 6" FLANGES  
STUDS AND NUTS (NOT SHOWN)  
SUITABLE FOR USE WITH  
CLASS 125 ANSI FLANGES



VIEW A-A



STANDARD MODELS:  
QS124C, QS1124C, QS4124C, QS4624C

NOTES:  
1. ALL DIMENSIONS ARE FOR REFERENCE ONLY.

STATE	Released	10/21/2025
DRAWN	DLende	Oct 16 2025 00:00 AM
CHECKED	JB	10/20/2025

DIMENSIONS ARE IN INCHES
PROJECT: E399
WAS:



VIKING PUMP, INC.  
A Unit of IDEX Corporation  
Cedar Falls, IA 50613 U.S.A.  
VIKINGPUMP.COM

THIS DRAWING IS THE PROPERTY OF  
VIKING PUMP, INC. AND IS PROPRIETARY  
IN GENERAL AND DETAIL. IT SHALL NOT BE  
COPIED OR ITS CONTENTS REVEALED TO  
OUTSIDE PARTIES WITHOUT THE WRITTEN  
CONSENT OF VIKING PUMP, INC.

3D

DWG. NO.  
QV-2356

SHEET 1 OF 1

REV. A.0

10/21/2025