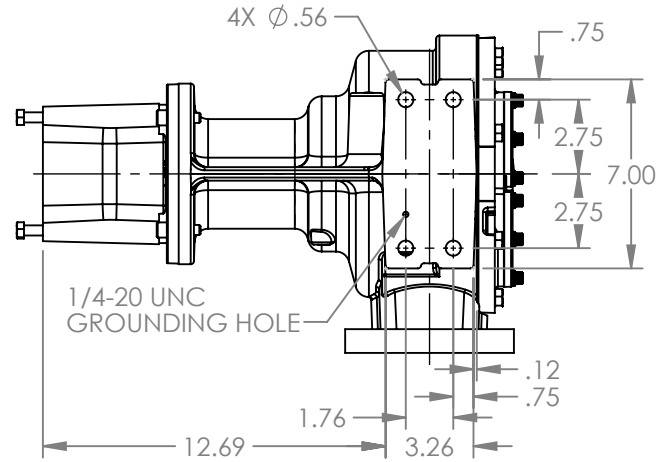
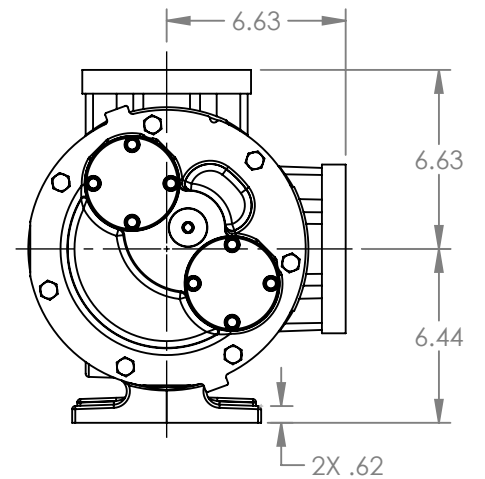
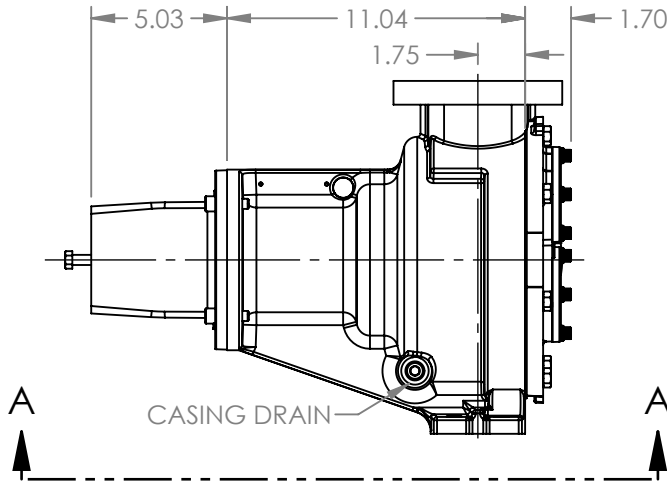
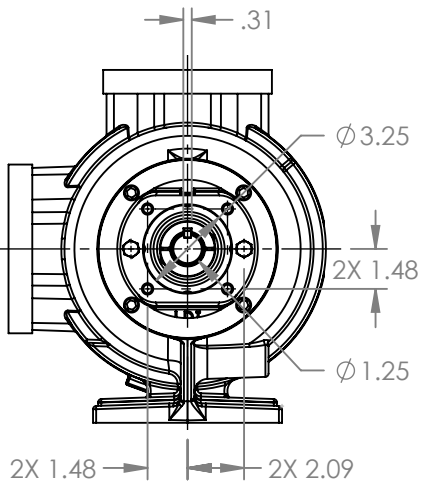


PORTS: 2X 2" FLANGES/NPT  
DRILLED AND TAPPED  
SUITABLE FOR USE WITH  
CLASS 125 ANSI FLANGES



VIEW A-A



STANDARD MODELS: RTPg20M

STATE	Released	11/25/2025
DRAWN	aries	06/11/2025
CHECKED	JDP	11/25/2025

DIMENSIONS ARE IN INCHES
PROJECT E397
WAS:

**VIKING PUMP**  
VIKING PUMP, INC.  
A Unit of IDEX Corporation  
Cedar Falls, IA, 50613 U.S.A.  
VIKINGPUMP.COM

THIS DRAWING IS THE PROPERTY OF  
VIKING PUMP, INC. AND IS PROPRIETARY  
IN GENERAL AND DETAIL. IT SHALL NOT BE  
COPIED OR ITS CONTENTS REVEALED TO  
OUTSIDE PARTIES WITHOUT THE WRITTEN  
CONSENT OF VIKING PUMP, INC.

3D

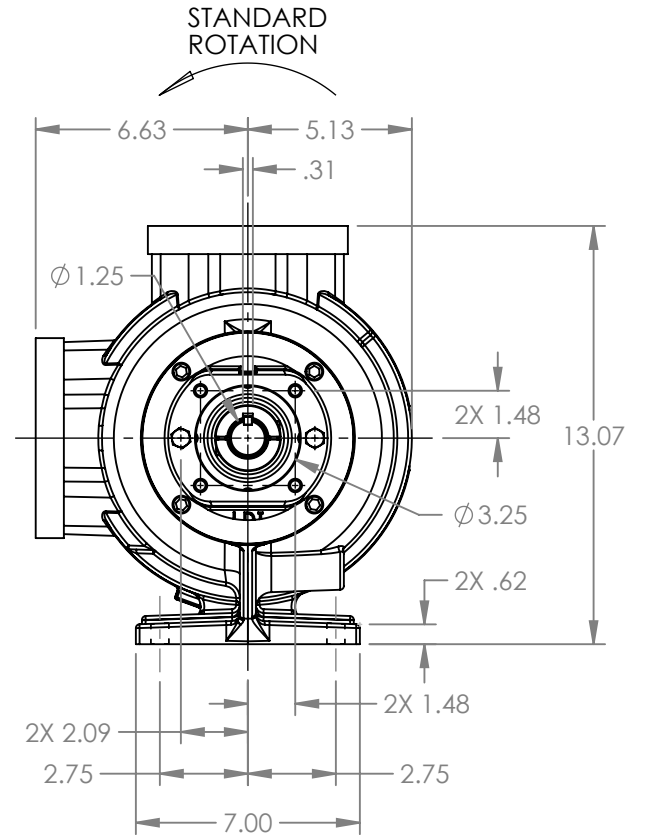
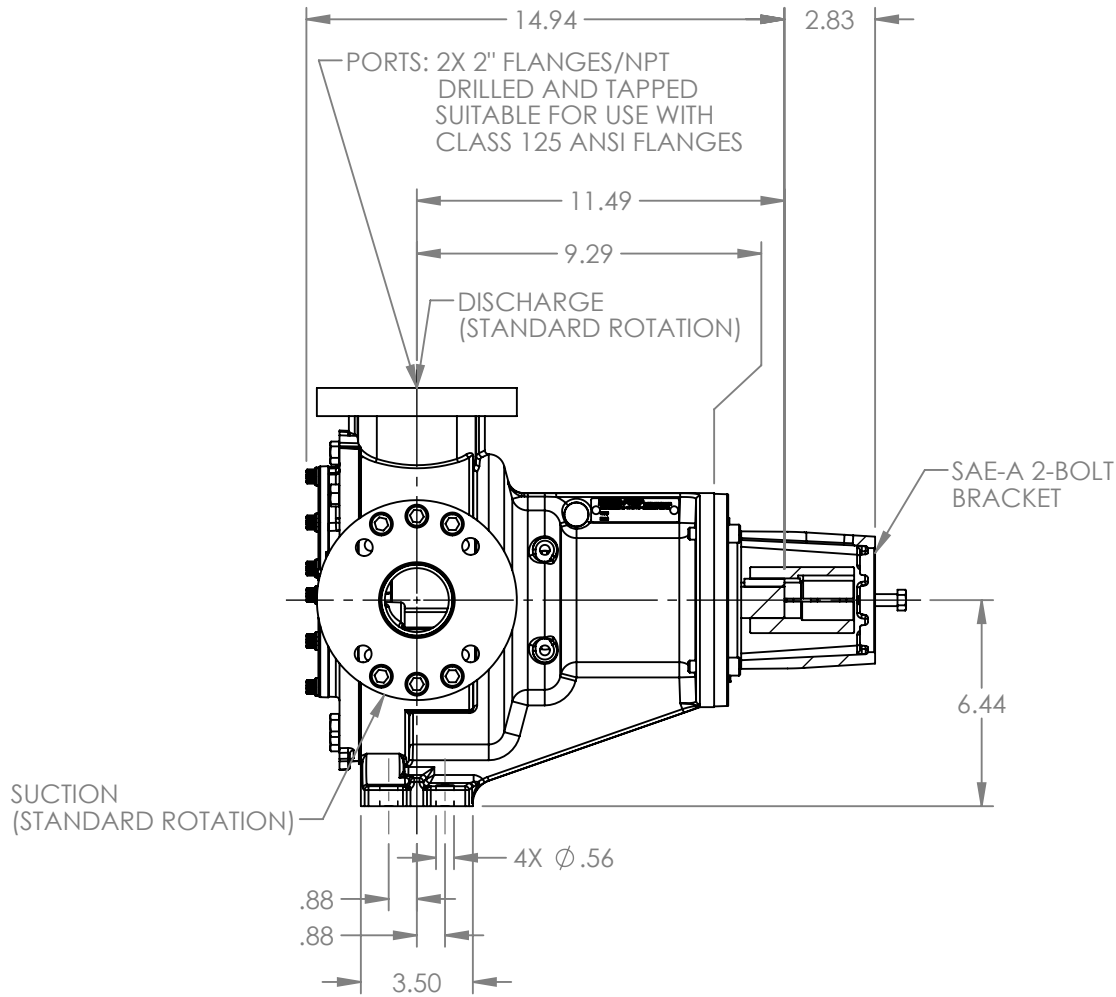
DWG. NO.  
LV-4775

SHEET 1 OF 2

REV. A.1

5/14/2025

NOTES:  
1. ALL DIMENSIONS ARE FOR REFERENCE ONLY.



STATE	Released	11/25/2025
DRAWN	aries	06/11/2025
CHECKED	JDP	11/25/2025

DIMENSIONS ARE IN  
INCHES

PROJECT: E397

WAS:



**VIKING PUMP, INC.**  
A Unit of IDEX Corporation  
Cedar Falls, IA 50613 U.S.A.  
VIKINGPUMP.COM

THIS DRAWING IS THE PROPERTY OF  
VIKING PUMP, INC. AND IS PROPRIETARY  
IN GENERAL AND DETAIL. IT SHALL NOT BE  
COPIED OR ITS CONTENTS REVEALED TO  
OUTSIDE PARTIES WITHOUT THE WRITTEN  
CONSENT OF VIKING PUMP, INC.

**3D**

DWG. NO.  
**LV-4775**

SHEET 2 OF 2

REV. A.1

11/25/2025