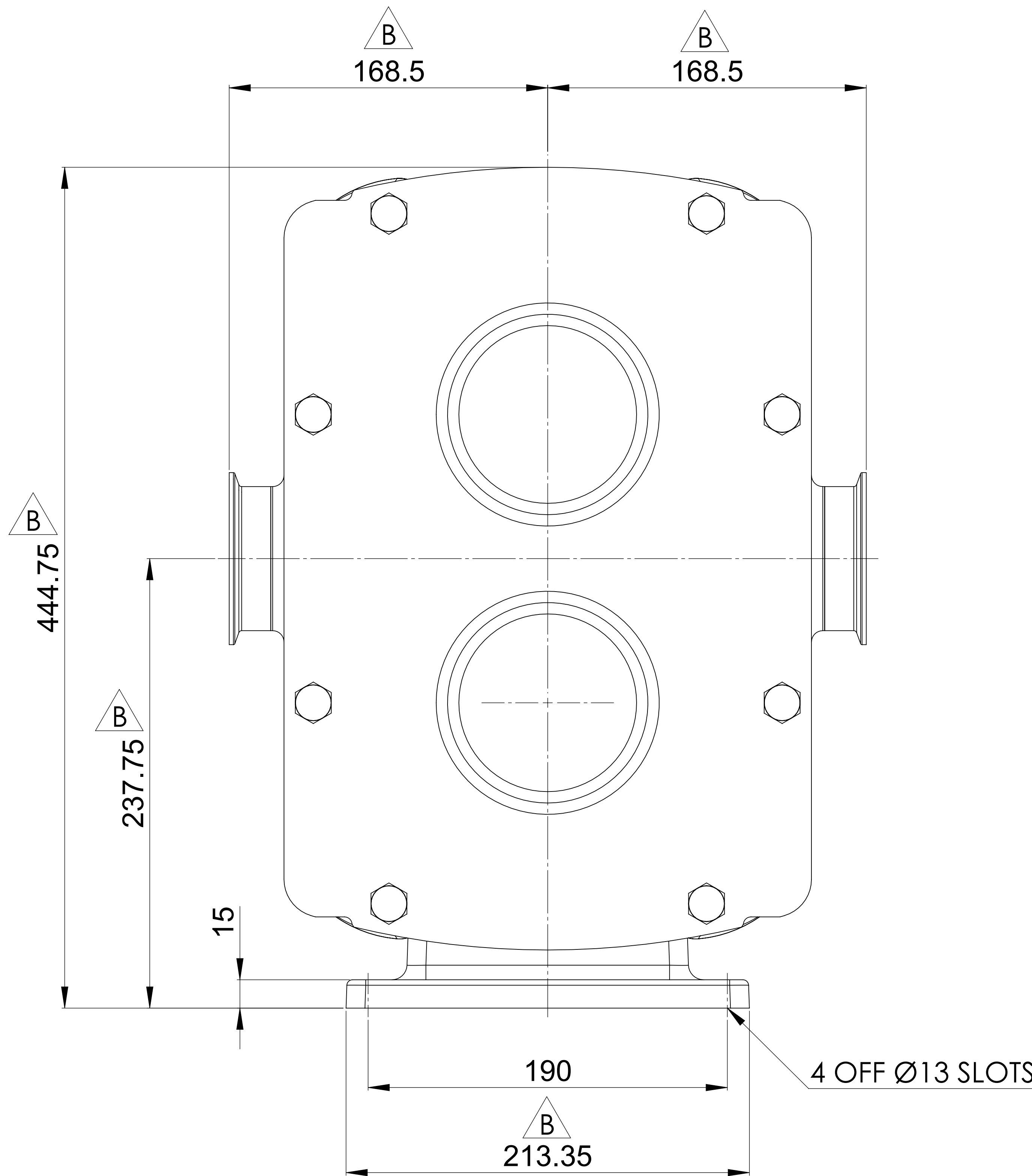


GENERAL ARRANGEMENT DETAILS

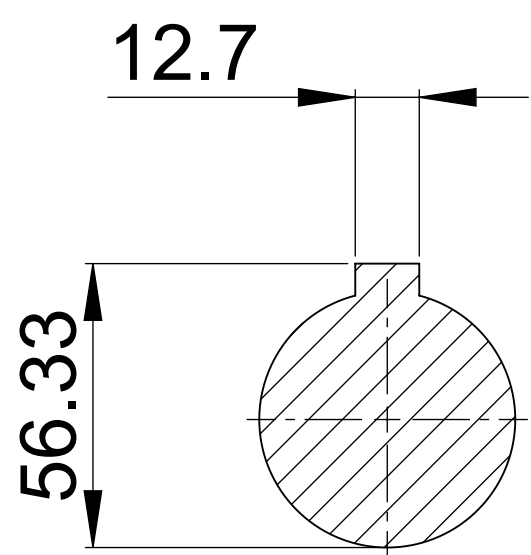
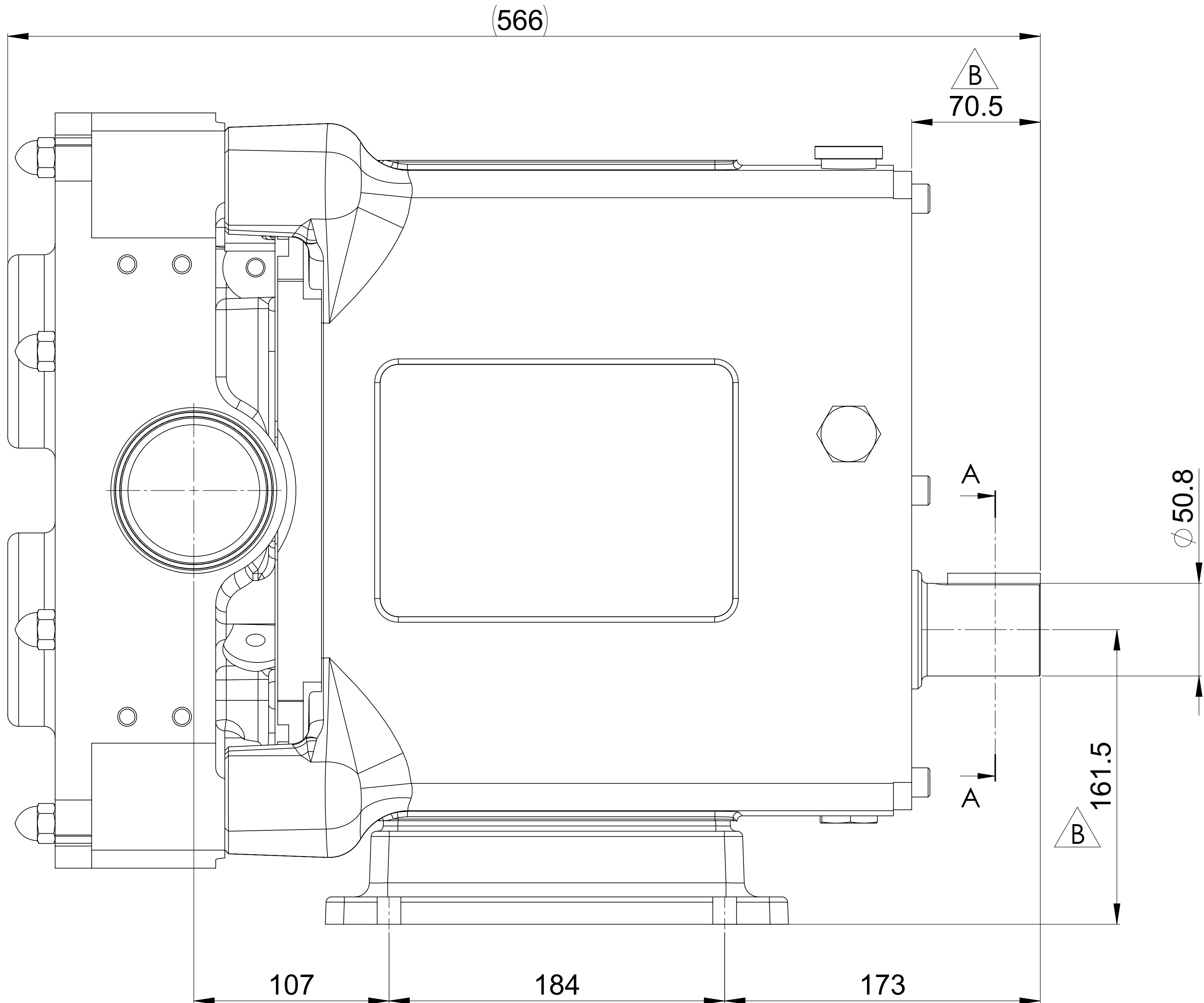
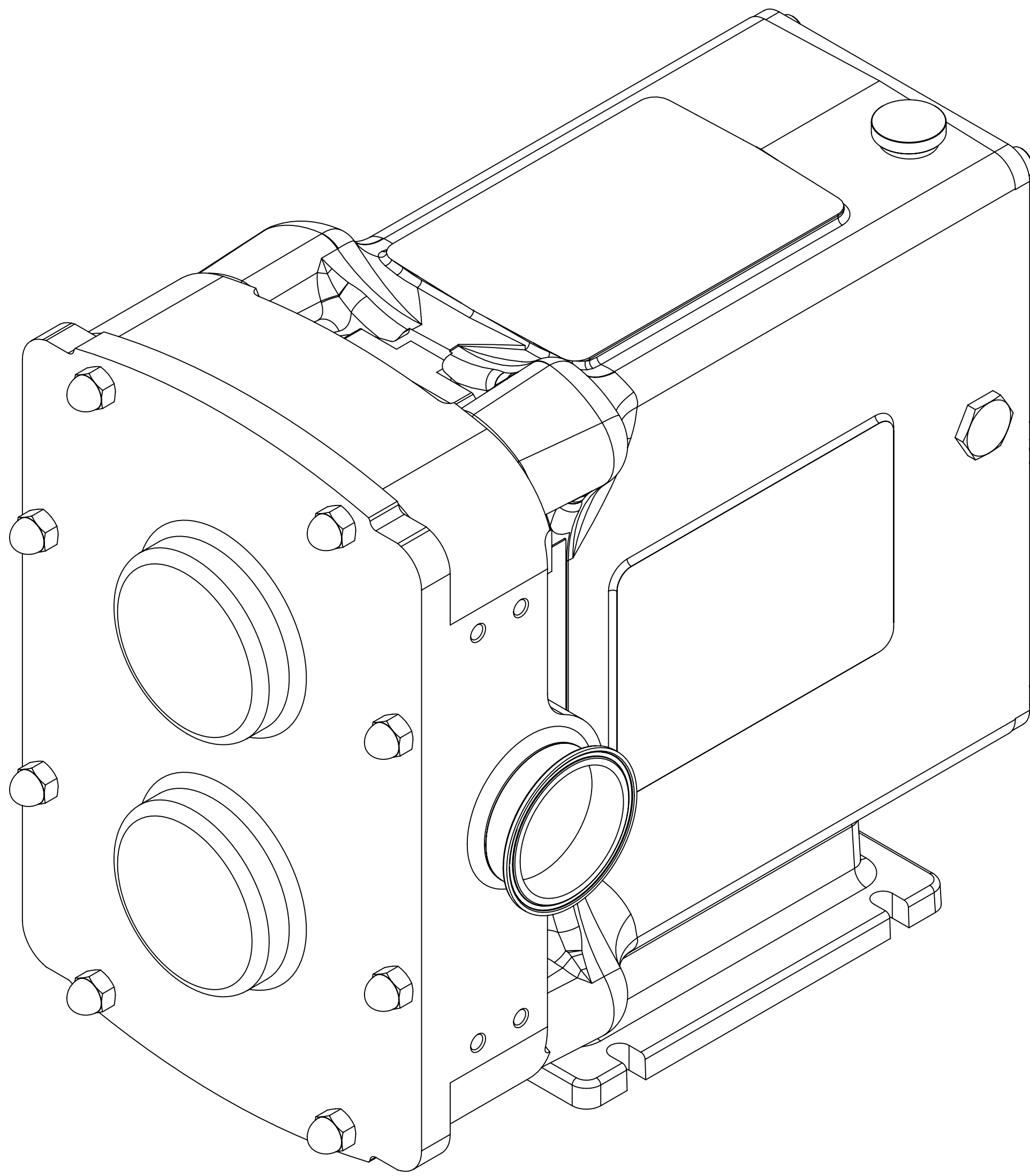
PUMP INFORMATION

| | |
|-------------------------|----------------------------------|
| PUMP MODEL | REVOLUTION - TWIN WING R1800X/31 |
| LEFT/TOP CONNECTION | 3" TRI-CLAMP |
| RIGHT/BOTTOM CONNECTION | 3" TRI-CLAMP |
| DRIVE SHAFT POSITION | BOTTOM SHAFT DRIVE |
| FRONT COVER ADDITIONS | STANDARD |
| ROTORCASE ADDITIONS | STANDARD |
| GEARBOX ADDITIONS | STANDARD |
| PUMP ADDITIONS | STANDARD |

THIS IS NOT A CERTIFIED DRAWING, USE FOR GENERAL
INSTALLATION ONLY



B



SECTION A-A

B

VIKING PUMP
HYGIENIC

HIGHFIELD INDUSTRIAL ESTATE,
EAST SUSSEX, BN23 6PT
TEL: (+44) 1323 509211

COPYRIGHT:
THIS DRAWING IS THE SOLE
PROPERTY OF
VIKING PUMP HYGIENIC LTD.
IT MUST NOT BE COPIED OR USED
IN PART OR FULL WITHOUT PRIOR
WRITTEN CONSENT.

UNLESS OTHERWISE STATED:
ALL DIMENSIONS ± 2.50
ANGLES ±2.0°
DO NOT SCALE THIS DRAWING
REMOVE BURRS AND SHARP EDGES
DIMENSIONS IN MILLIMETRES
IF IN DOUBT ASK

| | | | |
|------------|-------|---------|---------------------|
| PROJECTION | DRAWN | CHECKED | TITLE: |
| | DSB | IPJB | GENERAL ARRANGEMENT |
| | | | DRG. NO: |
| | | | GA4211 |

| | | |
|------------------------------|-------|------------|
| UPDATED FORMAT AND PRECISION | B | 19/09/2024 |
| ISSUED | A | 18/07/2019 |
| AMENDMENT | ISSUE | DATE |