

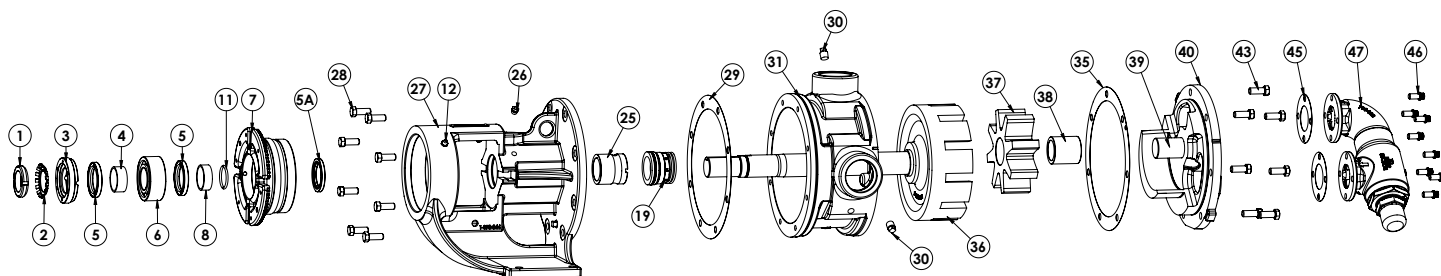


VIKING PUMP, INC.
A Unit of IDEX Corporation
406 State Street
Cedar Falls, IA 50613

PN 2-EXP-033-000-00

Exploded Diagram for 4124B Series™, 4224B Series™, 4624B Series™
Sizes G, H, HL, AK, AL, K, KK, L, LQ, LL, LS, Q, QS Seal Kits & Rebuild Kits

Exploded diagram representative of 4124B Series™. For other series, see the Technical Service Manual (TSM) for your specific model. List of the TSMs below.



NOTE: Kit may not apply to all models of these pumps. Contact your Viking Pump distributor with pump serial number for correct kit part numbers for that pump. Both a Seal Kit & Rebuild Kit are needed to completely rebuild the pump. Additional non-kit parts, such as Rotor and Shaft Assembly, may also be required, depending on wear.

ITEM	PART (may not exactly match parts list descriptions)	PART INCLUDED IN:	
		SEAL KIT	REBUILD KIT
1	Locknut	✓	
2	Lockwasher (Except G)	✓	
3	End Cap for Bearing Housing		
4	Bearing Spacer Collar (Outer)	✓	
5	Lip Seal for Bearing Housing (Except G)	✓	
5A	Lip Seal for Bracket	✓	
6	Ball Bearing ②	✓	
7	Bearing Housing		
8	Bearing Spacer Collar (Inner)	✓	
11	Ring, Half Round, 2 Req'd (Except G, H, HL, Q, QS)	✓	
12	Grease Fitting		
19	Mechanical Seal	✓	
25	Bracket Bushing (part of 27)		✓
26	Pressure Relief Plug		

ITEM	PART (may not exactly match parts list descriptions)	PART INCLUDED IN:	
		SEAL KIT	REBUILD KIT
27	Bracket and Bushing Assembly		
28	Capscrews for Bracket ①		
29	Bracket Gasket	✓	
30	Pipe Plug		
31	Casing (tapped or flanged)		
35	Head Gasket	✓	
36	Rotor and Shaft Assembly		
37	Idler and Bushing Assembly		✓
38	Idler bushing (part of 37)		
39	Idler Pin (part of 40)		
40	Head and Idler Pin Assembly		✓
43	Capscrews for Head ①		✓
45	Gaskets for Relief Valve	✓	
46	Capscrews for Valve ①		✓
47	Relief Valve (or cover plate if less valve)		

① Quantity of capscrews depends on pump size.

② Q & QS size have two roller bearings (not illustrated)

Kits include parts for relief valve head. Plain Head pumps will not need relief valve gaskets or capscrews. Discard extra parts.

Use Seal Lubricant in Seal Kit for installing mechanical seal and O-rings.

Seal kits include setscrews for bearing housing and end cap (not illustrated, all sizes).

Important safety information and rebuild instructions are found in the Technical Service Manual.

Download current Technical Service Manuals from www.vikingpump.com:

TSM 1400 – 124A Series™, 124AE Series™, 4124A Series™, 4124AE Series™, 4124B Series™, 224A Series™, 224AE Series™, 4224A Series™, 4224AE Series™, 4224B Series™, 324A Series™, 4324A Series™ – **Sizes G, H, HL, AK, AL, K, KK, L, LQ, LL, LS, Q, QS, M, N, R, RS**

TSM 1461 – 4624B Series™ – **Sizes H, HL, K, KK, L, LQ, LL, LS, Q, QS**