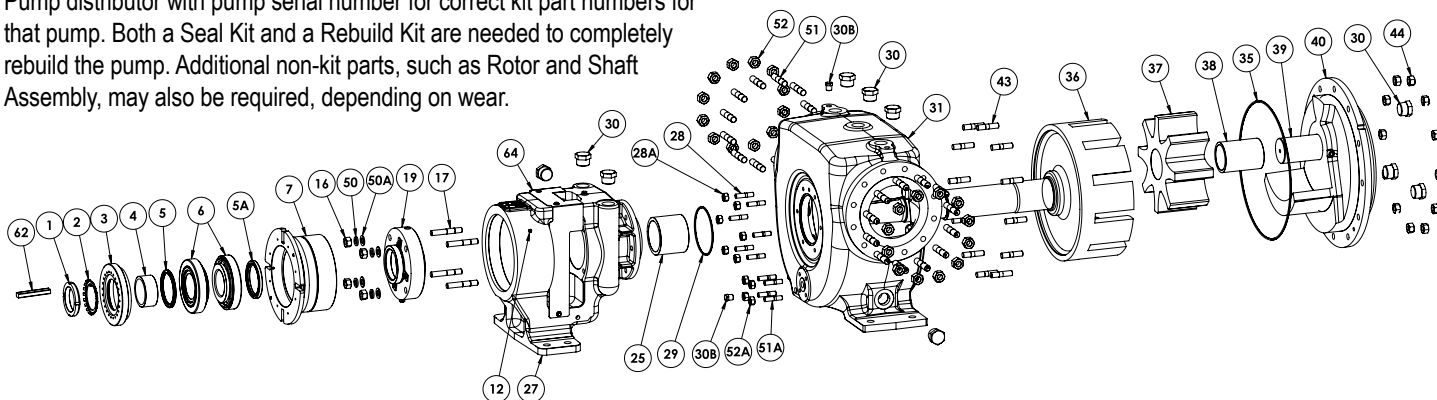


Exploded Diagram for Series 4323AX, Sizes N, R

NOTE: Kit may not apply to all models of these pumps. Contact your Viking Pump distributor with pump serial number for correct kit part numbers for that pump. Both a Seal Kit and a Rebuild Kit are needed to completely rebuild the pump. Additional non-kit parts, such as Rotor and Shaft Assembly, may also be required, depending on wear.



ITEM	PART (may not exactly match parts list descriptions)	PART INCLUDED IN:		
		BEARING KIT	SEAL REBUILD KIT	PUMP REBUILD KIT
1	Locknut	✓		
2	Lock Washer	✓		
3	Bearing End Cap			
4	Bearing Spacer Collar ①	✓		
5	Lip Seal (2 Req'd)	✓		
5A	Lip Seal (R only)	✓		
6	Roller Bearing (2 Req'd)	✓		
7	Bearing Housing			
12	Grease Fitting			
16	Seal Gland Nut (4 Req'd)		✓	
17	Seal Gland Stud (4 Req'd)		✓	
50	Seal Gland Flat Washer (4 Req'd)		✓	
50A	Seal Gland Lock Washer (4 Req'd)		✓	
19	Mechanical Seal (API 682 Single Cartridge)			
Not Illus	Seal Rebuild Kit		✓	
25	Bracket Bushing			✓
27	Jacketed Bracket & Bushing (R size doesn't include bushing) ④			
28	Capscrew for Bracket (8 Req'd)			
29	O-Ring for Bracket			✓
30	Pipe Plug ①			
30A	Pipe Plug ①			
30B	Pipe Plug ①			
31	Casing, Jacketed			
35	O-Ring - Head			✓
36	Rotor & Shaft Assembly			
37	Idler and Bushing Assembly			✓

ITEM	PART (may not exactly match parts list descriptions)	PART INCLUDED IN:		
		BEARING KIT	SEAL REBUILD KIT	PUMP REBUILD KIT
38	Idler & Bushing Assembly			
39	Idler Pin			
40	Head (Plain to Accept Jacketed Head Plate) & Lube Idler Pin Assembly			✓
Not Illus	O-Ring for Jacketed Head Plate			
Not Illus	Jacketed Head Plate			
43	Capscrews (KE - LSE) or Studs (Q - QS) for Head ①			✓
44	Nut for Head ①			✓
51	Stud for Flanges ①			
51A	Studs for Drain Port (4 Req'd)			
51B	Nut for Drain Port (4 Req'd)			
52	Nut for Flanges ①			
62	Key for Shaft	✓		
64	Guard for Standard Single Cartridge Mech Seal ③			
1 thru 11	Bearing Housing Assembly			
Not Illus	Bearing Housing Set Screw (2 Req'd) ②	✓		
Not Illus	Insert used w/ End Cap (2 Req'd) ②	✓		
Not Illus	End Cap Set Screw (2 Req'd) ②	✓		
Not Illus	Suckback Line Assembly for Standard Single Cartridge Mech Seal			
Not Illus	Guard Capscrew (4 Req'd)			
Not Illus	Guard Lock Washer (4 Req'd)			

- ① Quantity required depends upon pump size.
② Included in Bearing Housing Assembly.
③ Guard for Standard 682 Single Cartridge Mechanical Seal (#19). May not work for other seals.
④ Individual footed parts can't be machined to parallelity tolerance required by API676. Only the assembled pump will meet standard.

Important safety information and rebuild instructions are found in the Technical Service Manuals.

Download current Technical Service Manuals from www.vikingpump.com:

TSM 000 – Installation, Startup, Troubleshooting, Preventative Maintenance, Do's & Don'ts
TSM 633 – Viking Universal XPD 676 Pumps - Full Compliance with API 676 Standards