

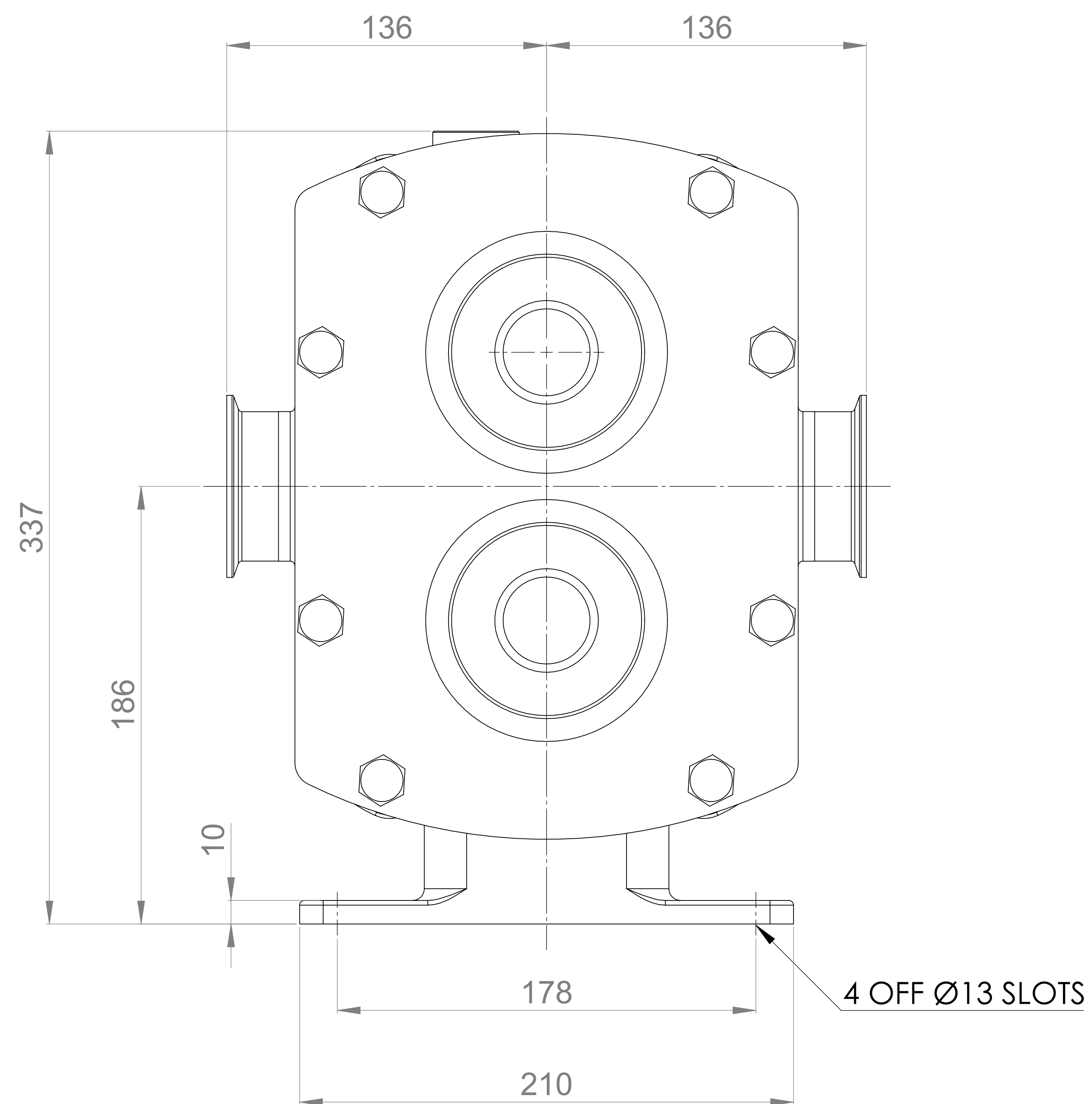
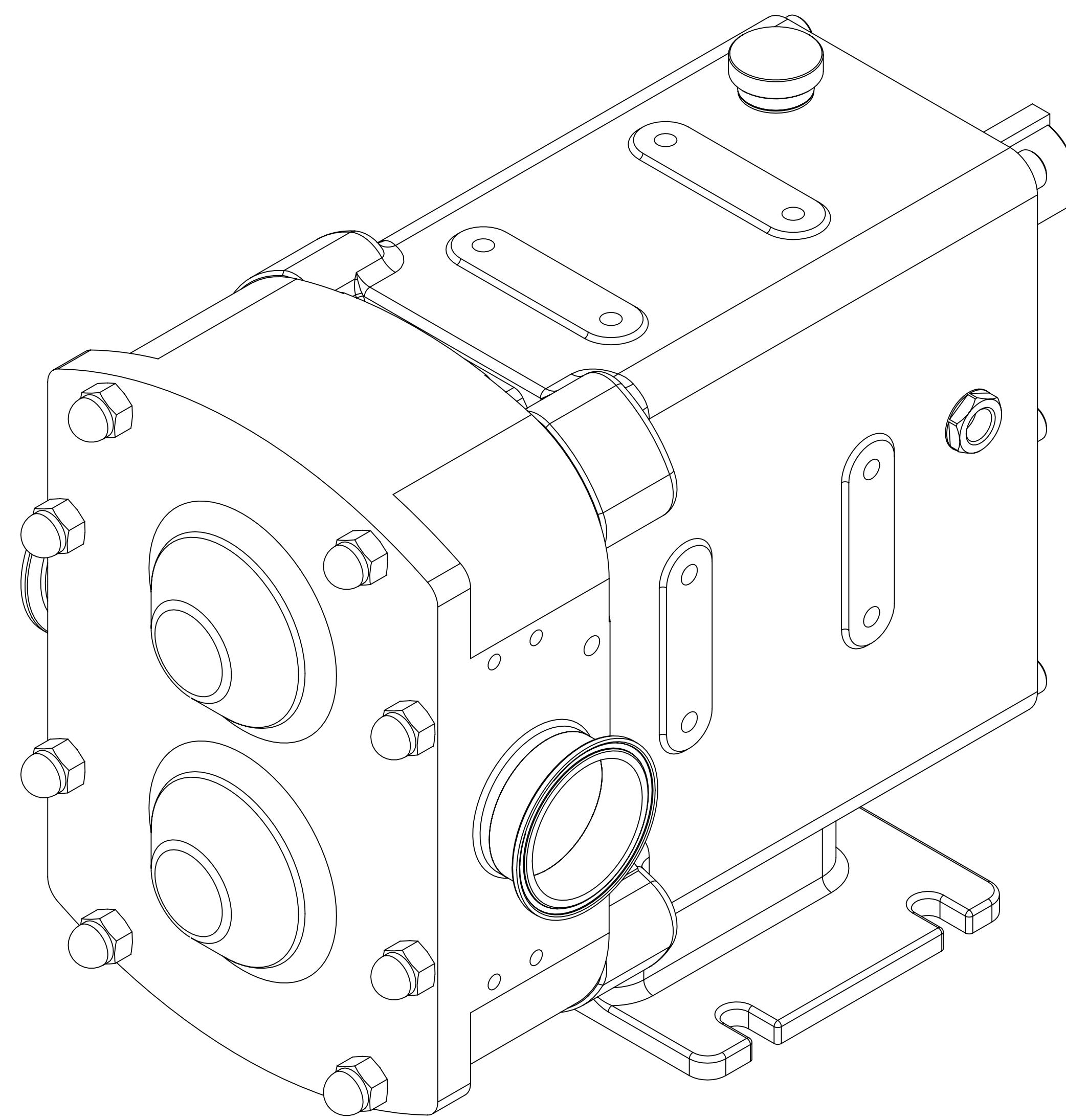
GENERAL ARRANGEMENT DETAILS

PUMP INFORMATION

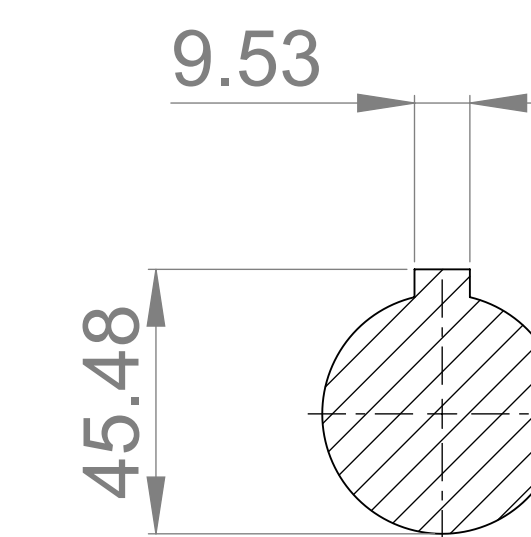
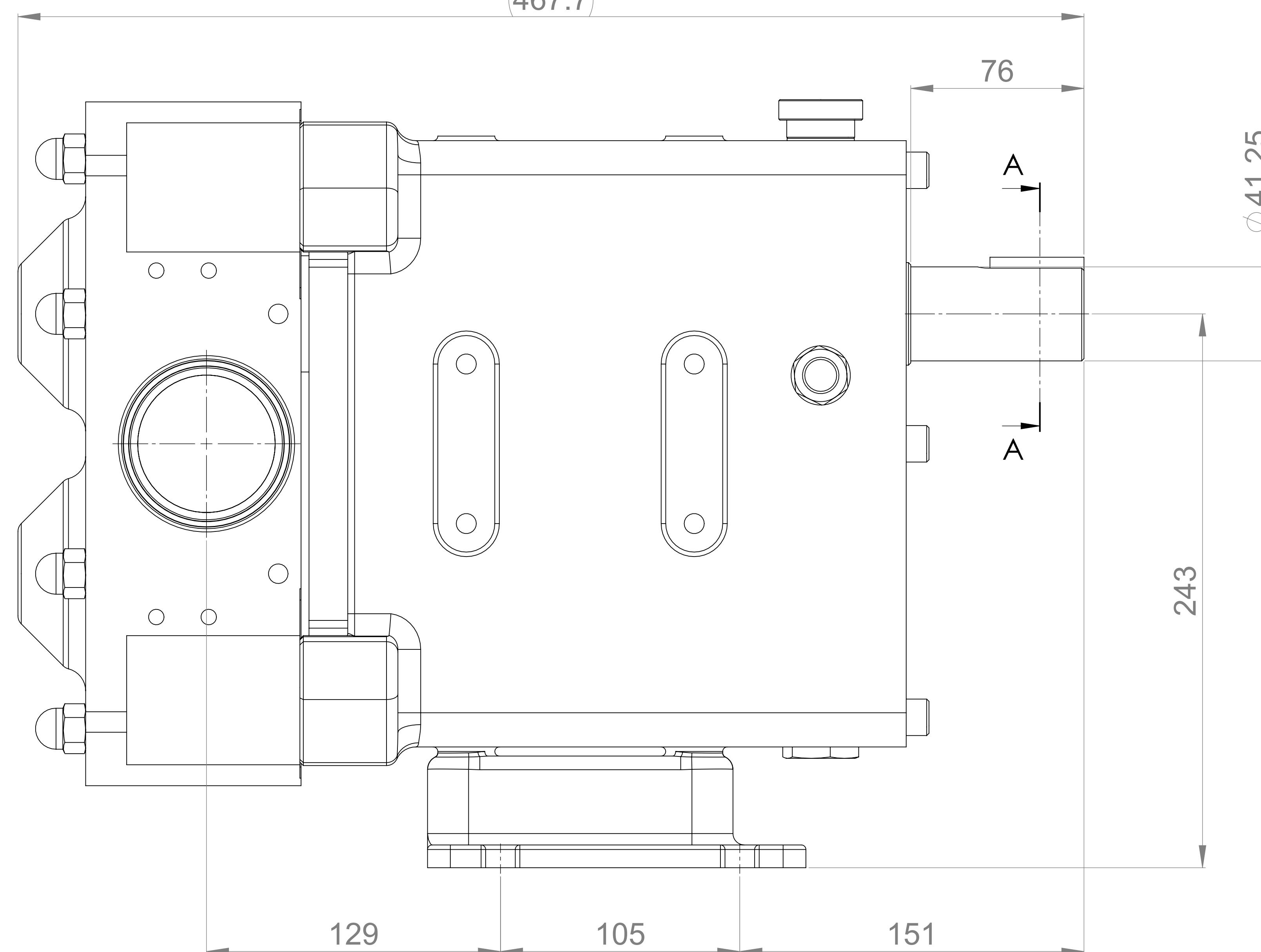
PUMP MODEL	REVOLUTION - TWIN WING R0600P/21
LEFT/TOP CONNECTION	2.5" TRI-CLAMP
RIGHT/BOTTOM CONNECTION	2.5" TRI-CLAMP
DRIVE SHAFT POSITION	TOP SHAFT DRIVE
FRONT COVER ADDITIONS	STANDARD
ROTORCASE ADDITIONS	STANDARD
GEARBOX ADDITIONS	STANDARD
PUMP ADDITIONS	STANDARD

THIS IS NOT A CERTIFIED DRAWING, USE FOR GENERAL INSTALLATION ONLY

△ B



△ B
467.7



SECTION A-A
△ B

UPDATED FORMAT AND PRECISION	B	24/09/2024
ISSUED	A	24/10/2019
AMENDMENT	ISSUE	DATE

VIKING PUMP
HYGIENIC
HIGHFIELD INDUSTRIAL ESTATE,
EASTBOURNE,
EAST SUSSEX, BN23 6PT
TEL: (+44) 1323 509211

COPYRIGHT:
THIS DRAWING IS THE SOLE
PROPERTY OF
VIKING PUMP HYGIENIC LTD.
IT MUST NOT BE COPIED OR USED
IN PART OR FULL WITHOUT PRIOR
WRITTEN CONSENT.

UNLESS OTHERWISE STATED:
ALL DIMENSIONS ± 2.50
ANGLES ± 2.0°
DO NOT SCALE THIS DRAWING
REMOVE BURRS AND SHARP EDGES
DIMENSIONS IN MILLIMETRES
IF IN DOUBT ASK

PROJECTION	DRAWN	CHECKED
	DSB	MJAJ

TITLE:	GENERAL ARRANGEMENT
DRG. NO:	GA4268