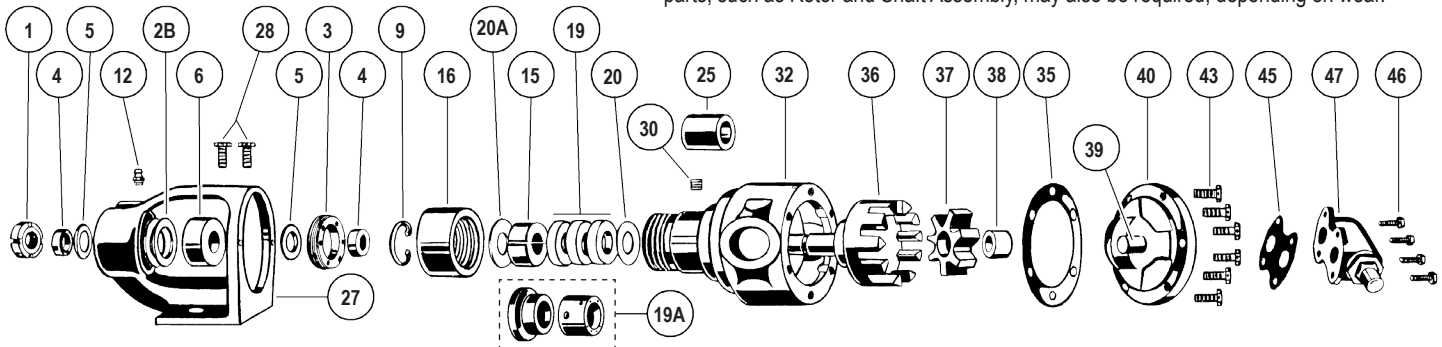


Exploded Diagram for Series 724 (packed) and 4724 (mechanical seal), Sizes F, FH & G

NOTE: Kit may not apply to all models of these pumps. Contact your Viking Pump distributor with pump serial number for correct kit part numbers for that pump. Both a Seal Kit and a Rebuild Kit are needed to completely rebuild the pump. Additional non-kit parts, such as Rotor and Shaft Assembly, may also be required, depending on wear.



ITEM	PART (may not exactly match parts list descriptions)	PART INCLUDED IN:		
		724 SERIES (PACKED) SEAL KIT	4724 SERIES (SEALED) SEAL KIT	REBUILD KIT
1	Nut, Self-Locking	✓	✓	
4	Bearing Spacer Collar (2-Req'd)	✓	✓	
5	Lipseal for Bearing Housing (2-Req'd)	✓	✓	
12	Grease Fitting			
2B	Conical Spring Washer (2-Req'd)	✓	✓	
6	Ball Bearing	✓	✓	
28	Capscrew for Bracket (2-Req'd)			
27	Bracket			
3	End Cap for Bracket			
9	Retaining Ring (724 Series Only)	✓		
16	Packing / Seal Gland Nut			
20A	Packing Gland Retainer Washer (724 Series Only)	✓		
15	Packing Gland, Split (724 Series Only)	✓		
19	Packing (724 Series Only)	✓		
19A	Mechanical Seal, Complete (4724 Series Only) ①		✓	

ITEM	PART (may not exactly match parts list descriptions)	PART INCLUDED IN:		
		724 SERIES (PACKED) SEAL KIT	4724 SERIES (SEALED) SEAL KIT	REBUILD KIT
20	Packing Retainer Washer (724 Series Only)	✓		
30	Pipe Plug			
25	Casing Bushing (included in 32)			✓
32	Casing and Bushing Assembly			
36	Rotor and Shaft Assembly			
37	Idler & Bushing Assembly			✓
38	Idler Bushing (included in 37)			
35	Head Gasket	✓	✓	
39	Idler Pin (Included in Head & Idler Pin Assy, 40)			
40	Head and Idler Pin Assembly			✓
43	Capscrews for Head			✓
45	Relief Valve Gasket (G size only)	✓	✓	
47	Relief Valve Complete (G size only)			
46	Relief Valve Capscrews (G size only)			✓
Not shown	Spanner Wrench (See TSM 211)			

① Mechanical seal elastomers in this kit are specified in seal kit description.

Use Seal Lubricant included in Kit for installing mechanical seal.

Important safety information and rebuild instructions are found in the Technical Service Manual.

Download current Technical Service Manuals from www.vikingpump.com:

TSM 000 - Installation, Startup, Troubleshooting,
Preventative Maintenance, Do's & Don'ts

TSM 211 - Heavy Duty Stainless Steel Pumps,
Series 724 and 4724, Sizes F-G