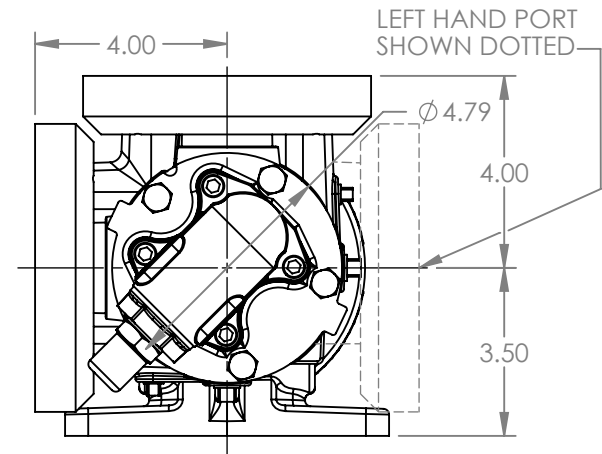
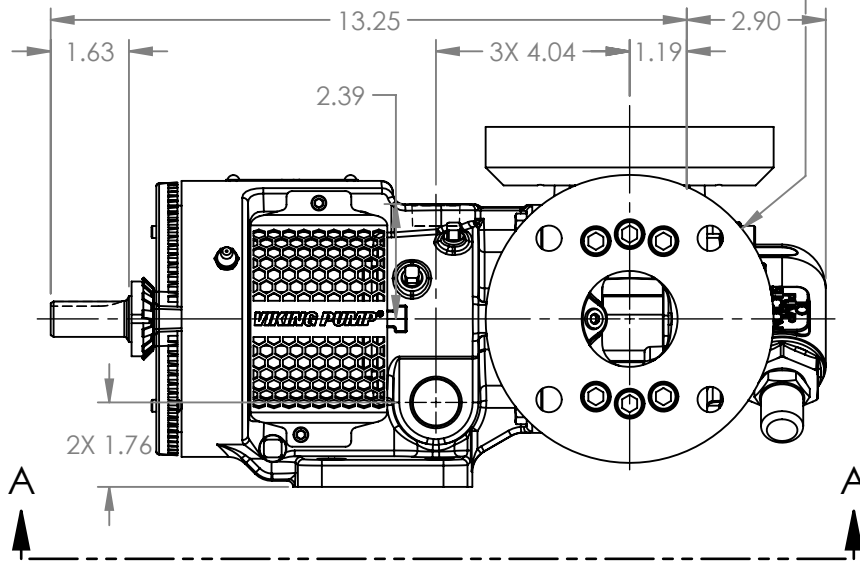


VIEW A-A

PORTS: 2X 2" FLANGES  
 DRILLED AND TAPPED  
 SUITABLE FOR USE WITH  
 CLASS 150 ANSI FLANGES  
 (223C, 4223C, 227C, 1227C, 4227C)



MODELS WITH OPTIONAL FLANGED PORTS:  
 H223C, H4223C, H227C, H1227C, H4227C,  
 HL223C, HL4223C, HL227C, HL1227C, HL4227C

NOTES:  
 1. ALL DIMENSIONS ARE FOR REFERENCE ONLY.

STATE	Released	04/16/2024
DRAWN	dalcorn	07/06/2023
CHECKED	BAM	04/16/2024

DIMENSIONS ARE IN INCHES	
PROJECT: E330	
WAS:	



VIKING PUMP, INC.  
 A Unit of IDEX Corporation  
 Cedar Falls, IA 50613 U.S.A.  
 VIKINGPUMP.COM

THIS DRAWING IS THE PROPERTY OF VIKING PUMP, INC. AND IS PROPRIETARY IN GENERAL AND DETAIL. IT SHALL NOT BE COPIED OR ITS CONTENTS REVEALED TO OUTSIDE PARTIES WITHOUT THE WRITTEN CONSENT OF VIKING PUMP, INC.

3D

DWG. NO.  
 HV-4191

SHEET 1 OF 1

REV. A.2

04/16/2024