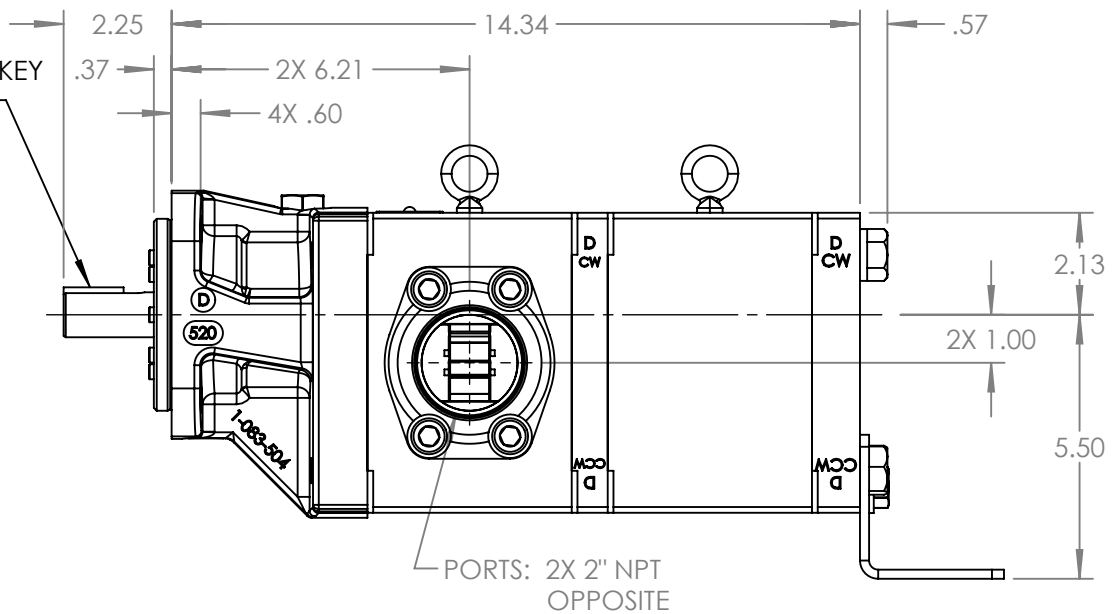


.25 SQUARE KEY
1.25 LONG



PORTS: 2X 2" NPT
OPPOSITE

NOTES:

1. ALL DIMENSIONS ARE FOR REFERENCE ONLY.

STANDARD MODELS: GB-41018-G00, GB-41018-G10

STATE	Released	07/15/2021
DRAWN	bmanternach	6/15/2021
CHECKED	JAG	07/15/2021

DIMENSIONS ARE IN INCHES	
PROJECT: E331	
WAS: EX-E331-503	



VIKING PUMP, INC.
A Unit of IDEX Corporation
Cedar Falls, IA 50613 U.S.A.
VIKINGPUMP.COM

THIS DRAWING IS THE PROPERTY OF VIKING PUMP, INC. AND IS PROPRIETARY IN GENERAL AND DETAIL. IT SHALL NOT BE COPIED OR ITS CONTENTS REVEALED TO OUTSIDE PARTIES WITHOUT THE WRITTEN CONSENT OF VIKING PUMP, INC.

3D

DWG. NO.	SHEET 1 OF 1
GPV-1018-029-U	

REV. A.0
07/15/2021