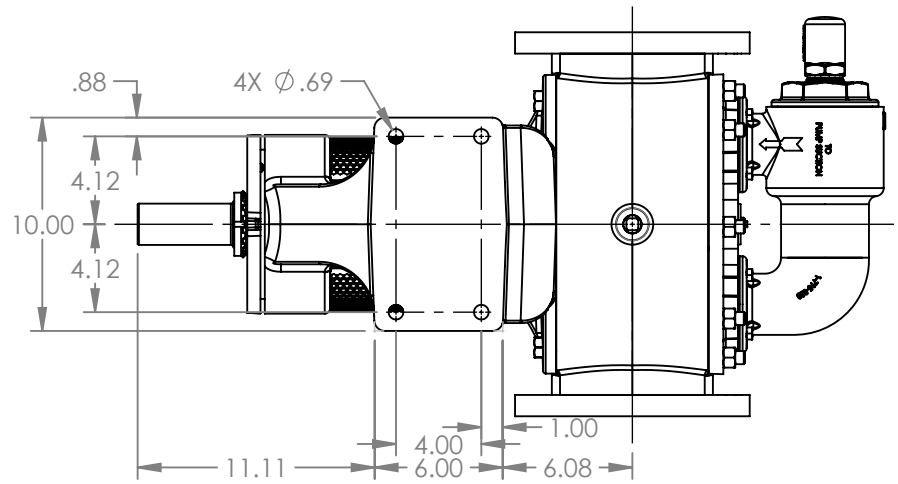
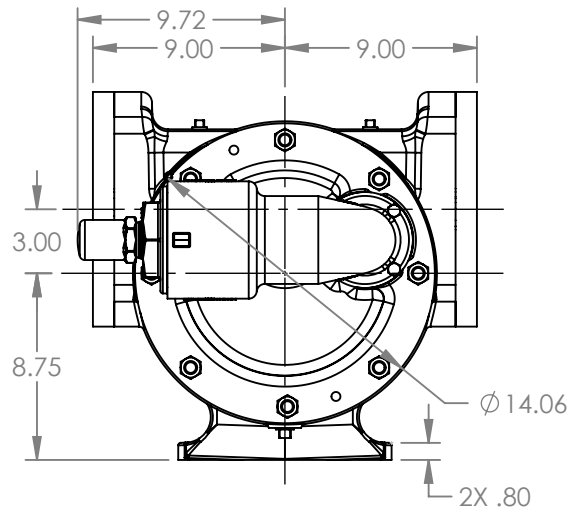
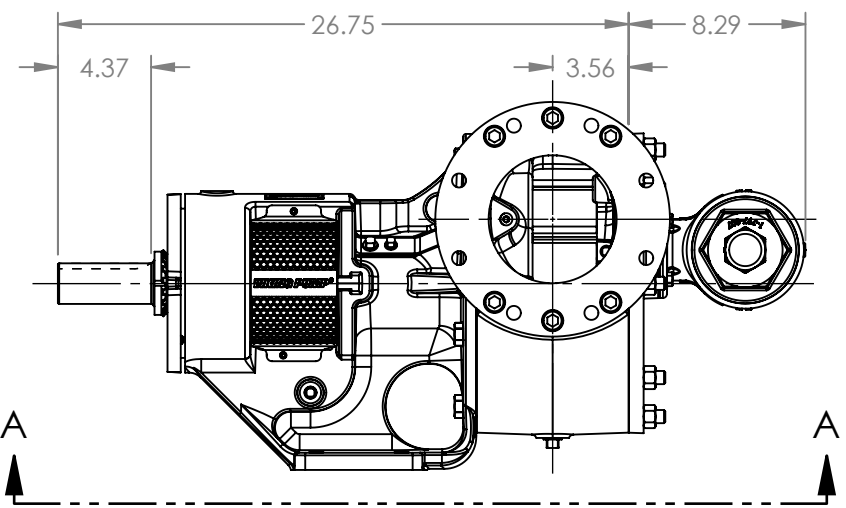


PORTS: 2X 6" FLANGES
STUDS AND NUTS (NOT SHOWN)
SUITABLE FOR USE WITH
CLASS 125 ANSI FLANGES



VIEW A-A



MODELS WITH OPTIONAL FLANGED PORTS:
Q124C, Q1124C, Q4124C, Q4624C

NOTES:
1. ALL DIMENSIONS ARE FOR REFERENCE ONLY.

STATE	Released	01/19/2026
DRAWN	aeverhardt	01/05/2026
CHECKED	DTL	01/19/2026

DIMENSIONS ARE IN
INCHES
PROJECT: E399
WAS:

VIKING PUMP
VIKING PUMP, INC.
A Unit of IDEX Corporation
Cedar Falls, IA 50613 U.S.A.
VIKINGPUMP.COM

THIS DRAWING IS THE PROPERTY OF
VIKING PUMP, INC. AND IS PROPRIETARY
IN GENERAL AND DETAIL. IT SHALL NOT BE
COPIED OR ITS CONTENTS REVEALED TO
OUTSIDE PARTIES WITHOUT THE WRITTEN
CONSENT OF VIKING PUMP, INC.

3D

DWG. NO.
QV-2367

SHEET 1 OF 1

REV. A.0
01/19/2026