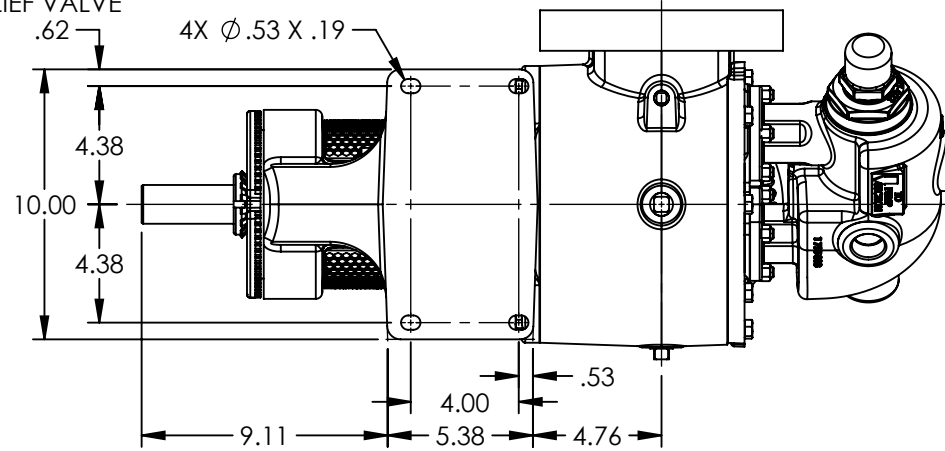
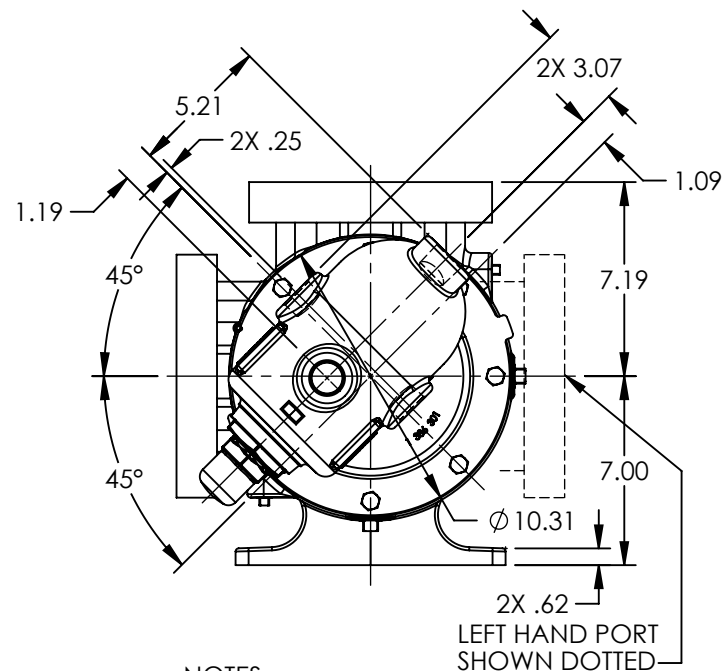
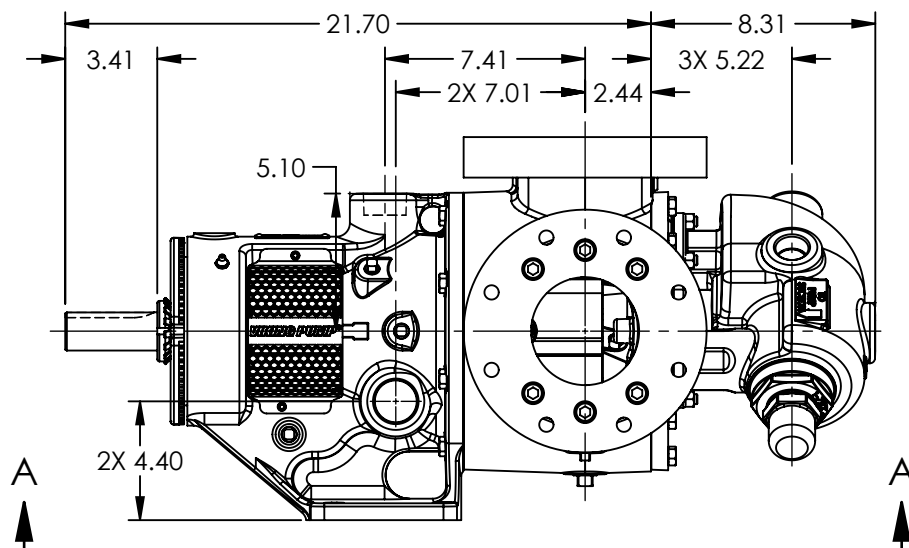


PORTS: 2X 4" FLANGES DRILLED AND TAPPED SUITABLE FOR USE WITH CLASS 150 ANSI FLANGES (223C, 4223C, 227C, 1227C, 4227C)



VIEW A-A



NOTES:
1. ALL DIMENSIONS ARE FOR REFERENCE ONLY.

MODELS WITH OPTIONAL FLANGED PORTS:
LS223C, LS4223C, LS227C, LS1227C, LS4227C

STATE	Released	04/16/2024
DRAWN	dalcom	07/11/2023
CHECKED	BA	04/16/2024

DIMENSIONS ARE IN INCHES
PROJECT: E330
WAS:



VIKING PUMP, INC.
A Unit of IDEX Corporation
Cedar Falls, IA 50613 U.S.A.
VIKINGPUMP.COM

THIS DRAWING IS THE PROPERTY OF VIKING PUMP, INC. AND IS PROPRIETARY IN GENERAL AND DETAIL. IT SHALL NOT BE COPIED OR ITS CONTENTS REVEALED TO OUTSIDE PARTIES WITHOUT THE WRITTEN CONSENT OF VIKING PUMP, INC.

3D

DWG. NO.
LV-4568

SHEET 1 OF 1

REV. A.1

04/16/2024